







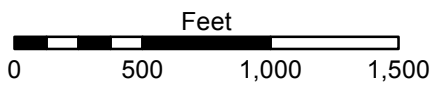
Item 5Ci.
BCWMC 8-17-17



Barr Footer: ArcGIS 10.4.1, 2017-08-09 15:40 File: I:\Client\BassettCreek\gis\maps\Permits\Maps-2017\2017-CIP-Agora.mxd User: jpp

Imagery Source: Aerial Express (2009)

-  Project Location
-  Bassett Creek
-  WMC Boundary
-  Major Subwatershed
-  Municipality
-  Stream



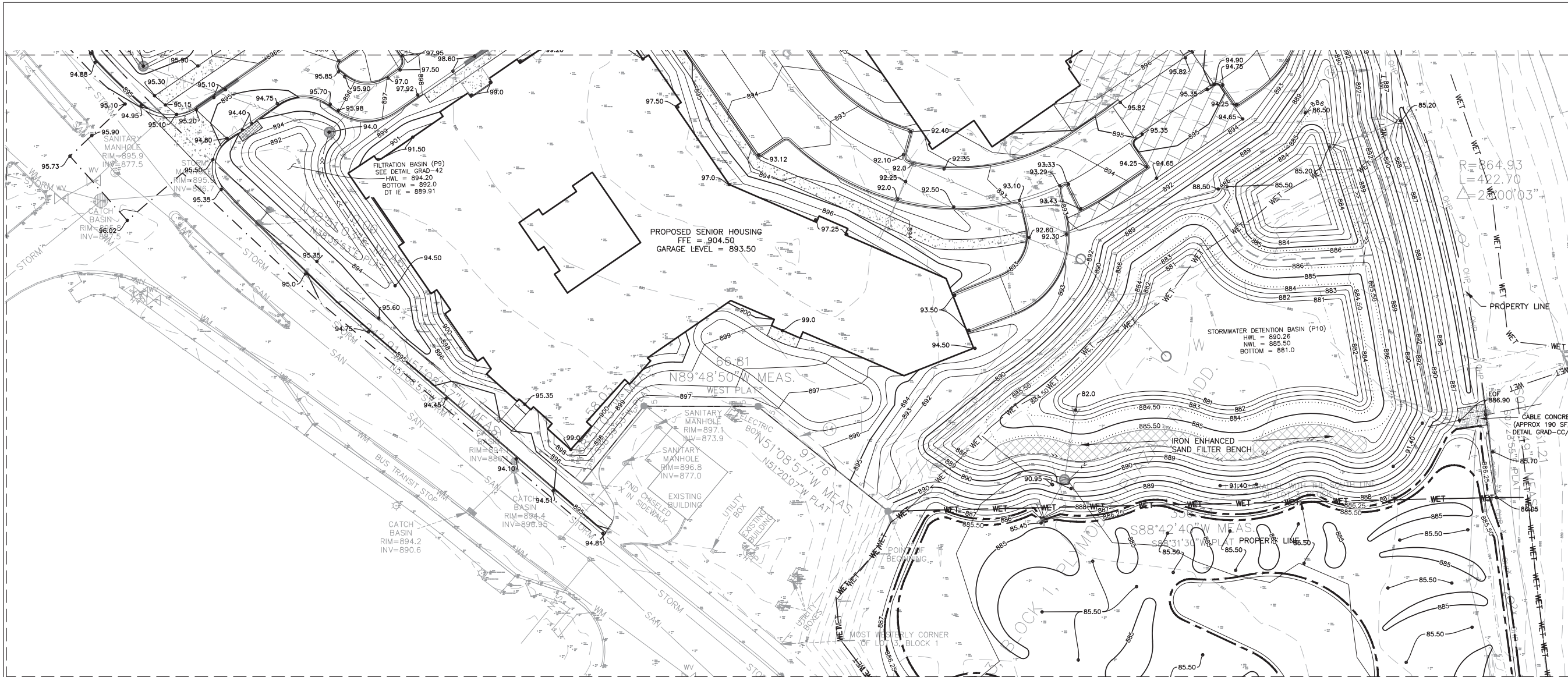
LOCATION MAP
Agora Development and CIP Project (NL-2)
Rockford Road and Highway 169
Plymouth, MN

"AGORA"

PLYMOUTH MN
ROCK HILL MANAGEMENT



R=864.93
=422.70
=200'03"



I hereby certify that this plan, specification, or report was prepared by me or under my direct supervision and that I am a duly licensed professional engineer under the laws of the State of Minnesota.

Signature: Steven E. Cahill
Typed or Printed Name: Steven E. Cahill
Date: 10/20/16
Case #

NOT FOR CONSTRUCTION

GRADING LEGEND:

- ● □ ▽ MANHOLE/CATCHBASIN/FLARED END
- 892 — MINOR CONTOUR ELEVATION
- 895 — MAJOR CONTOUR ELEVATION
- >> — STORM SEWER
- >>> — FLOW LINES
- — GRADE BREAK LINES
- — TIP OUT GUTTER
- ME — MATCH EXISTING
- 94.0 — SPOT ELEVATIONS
- — PROPOSED FLOW ARROW

GENERAL GRADING AND DRAINAGE NOTES:

1. ALL EROSION AND SEDIMENTATION CONTROL MEASURES SHALL BE IN PLACE BEFORE BEGINNING SITE GRADING ACTIVITIES.
2. CONTRACTOR SHALL BE RESPONSIBLE FOR DETERMINING QUANTITIES OF CUT, FILL AND WASTE MATERIAL TO BE HANDLED, AND FOR THE AMOUNT OF GRADING TO BE DONE. ALL COSTS ASSOCIATED WITH IMPORTING SUITABLE MATERIAL AND EXPORTING UNSUITABLE/EXCESS/WASTE MATERIAL SHALL BE INCLUDED IN THE BID PRICE.
3. CONTRACTOR SHALL STRIP, STOCKPILE AND RE-SPREAD EXISTING ONSITE TOPSOIL, IF MATERIAL IS APPROVED BY THE LANDSCAPE ARCHITECT AND/OR SPECIFICATIONS. PROVIDE A UNIFORM THICKNESS OF 6" MINIMUM IN ALL DISTURBED AREAS TO BE LANDSCAPED.
4. CONTRACTOR SHALL DISPOSE OF ANY EXCESS SOIL MATERIAL UNLESS OTHERWISE DIRECTED.
5. REFER TO LANDSCAPE PLAN FOR PERMANENT TURF RESTORATION AND PLANTING INFORMATION.
6. MAINTAIN TEMPORARY PROTECTION MEASURES DURING CONSTRUCTION ACTIVITIES. SEE SITE REMOVALS PLAN FOR ADDITIONAL INFORMATION. PROVIDE ADDITIONAL PROTECTION AS NECESSARY AS WORK PROGRESSES.
7. SEE CIVIL SITE PLAN FOR SITE LAYOUT.
8. PROPOSED CONTOURS AND SPOT ELEVATIONS ARE TO FINISHED SURFACE GRADE.
9. SPOT ELEVATIONS SHOWN ADJACENT TO CURB REFER TO GUTTER/FLOW LINE. SPOT ELEVATION SHOWN FOR TOP OF CURB ARE LABELED WITH TC (TOP OF CURB). SPOT LABELED ME REFERS TO MATCH EXISTING GRADE, EOF REFERS TO EMERGENCY OVERFLOW ELEVATION, TW REFERS TO TOP OF WALL AND BW REFERS TO BOTTOM OF WALL.
10. PROVIDE POSITIVE DRAINAGE AWAY FROM BUILDINGS AT ALL TIMES.
11. NO GRADED SLOPES SHALL EXCEED 3:1 (HORIZONTAL TO VERTICAL) UNLESS OTHERWISE NOTED.
12. UNIFORMLY GRADE AREAS WITHIN LIMITS OF GRADING AND PROVIDE A SMOOTH FINISHED SURFACE WITH UNIFORM SLOPES BETWEEN POINTS WHERE ELEVATIONS ARE SHOWN OR BETWEEN SUCH POINTS AND EXISTING GRADES.
13. LIMIT THE DISTURBED AREA AS MUCH AS POSSIBLE AND CONDUCT GRADING OPERATIONS IN A MANNER TO MINIMIZE THE POTENTIAL FOR EROSION.



STATE LAW: 48 HOURS BEFORE EXCAVATING OR DEMOLISHING BUILDINGS, CALL 811 FOR FIELD LOCATION OF UNDERGROUND UTILITY LINES. THIS SERVICE LOCATES UTILITY OWNED LINES BUT NOT PRIVATE LINES.

THE LOCATIONS OF UNDERGROUND UTILITIES ARE SHOWN IN AN APPROXIMATE WAY ONLY AND HAVE NOT BEEN INDEPENDENTLY VERIFIED. THE EXACT LOCATION OF ALL UTILITIES (PUBLIC AND PRIVATE) MUST BE DETERMINED BEFORE COMMENCING WORK.

No.	Description	Date

160301
PROJECT NUMBER
SEG JH/RAT
DRAWN BY CHECKED BY
KEY PLAN

"AGORA"
SITE GRADING PLAN

C4.5

"AGORA"

PLYMOUTH MN

ROCK HILL MANAGEMENT



I hereby certify that this plan, specification, or report was prepared by me or under my direct supervision and that I am a duly licensed professional engineer under the laws of the State of Minnesota

Signature: Steven E. Cahill, P.E.
 Typed Name: Steven E. Cahill, P.E.
 Date: 10/20/16
 License #: 102016

NOT FOR CONSTRUCTION

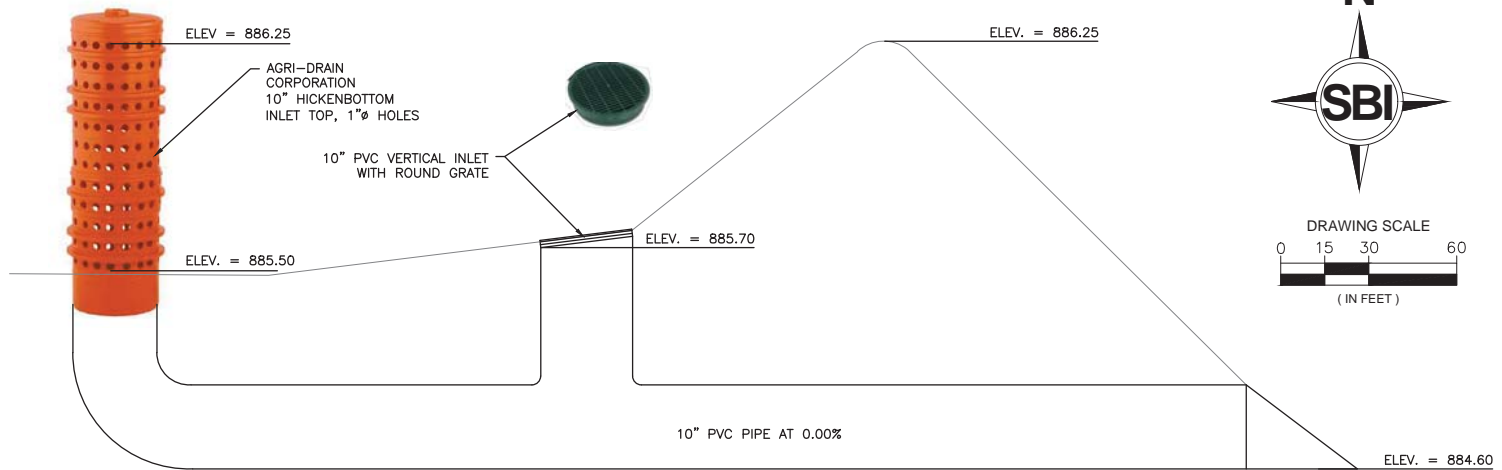


GRADING LEGEND:

- MANHOLE/CATCHBASIN/FLARED END
- MINOR CONTOUR ELEVATION
- MAJOR CONTOUR ELEVATION
- STORM SEWER
- FLOW LINES
- GRADE BREAK LINES
- TIP OUT GUTTER
- MATCH EXISTING
- SPOT ELEVATIONS
- PROPOSED FLOW ARROW

GENERAL GRADING AND DRAINAGE NOTES:

1. ALL EROSION AND SEDIMENTATION CONTROL MEASURES SHALL BE IN PLACE BEFORE BEGINNING SITE GRADING ACTIVITIES.
2. CONTRACTOR SHALL BE RESPONSIBLE FOR DETERMINING QUANTITIES OF CUT, FILL AND WASTE MATERIAL TO BE HANDLED, AND FOR THE AMOUNT OF GRADING TO BE DONE. ALL COSTS ASSOCIATED WITH IMPORTING SUITABLE MATERIAL AND EXPORTING UNSUITABLE/EXCESS/WASTE MATERIAL SHALL BE INCLUDED IN THE BID PRICE.
3. CONTRACTOR SHALL STRIP, STOCKPILE AND RE-SPREAD EXISTING ONSITE TOPSOIL, IF MATERIAL IS APPROVED BY THE LANDSCAPE ARCHITECT AND/OR SPECIFICATIONS, PROVIDE A UNIFORM THICKNESS OF 6" MINIMUM IN ALL DISTURBED AREAS TO BE LANDSCAPED.
4. CONTRACTOR SHALL DISPOSE OF ANY EXCESS SOIL MATERIAL UNLESS OTHERWISE DIRECTED.
5. REFER TO LANDSCAPE PLAN FOR PERMANENT TURF RESTORATION AND PLANTING INFORMATION.
6. MAINTAIN TEMPORARY PROTECTION MEASURES DURING CONSTRUCTION ACTIVITIES. SEE SITE REMOVALS PLAN FOR ADDITIONAL INFORMATION. PROVIDE ADDITIONAL PROTECTION AS NECESSARY AS WORK PROGRESSES.
7. SEE CIVIL SITE PLAN FOR SITE LAYOUT.
8. PROPOSED CONTOURS AND SPOT ELEVATIONS ARE TO FINISHED SURFACE GRADE.
9. SPOT ELEVATIONS SHOWN ADJACENT TO CURB REFER TO GUTTER/FLOW LINE. SPOT ELEVATION SHOWN FOR TOP OF CURB ARE LABELED WITH TC (TOP OF CURB). SPOT LABELED ME REFERS TO MATCH EXISTING GRADE, EOF REFERS TO EMERGENCY OVERFLOW ELEVATION, TW REFERS TO TOP OF WALL AND BW REFERS TO BOTTOM OF WALL.
10. PROVIDE POSITIVE DRAINAGE AWAY FROM BUILDINGS AT ALL TIMES.
11. NO GRADED SLOPES SHALL EXCEED 3:1 (HORIZONTAL TO VERTICAL) UNLESS OTHERWISE NOTED.
12. UNIFORMLY GRADE AREAS WITHIN LIMITS OF GRADING AND PROVIDE A SMOOTH FINISHED SURFACE WITH UNIFORM SLOPES BETWEEN POINTS WHERE ELEVATIONS ARE SHOWN OR BETWEEN SUCH POINTS AND EXISTING GRADES.
13. LIMIT THE DISTURBED AREA AS MUCH AS POSSIBLE AND CONDUCT GRADING OPERATIONS IN A MANNER TO MINIMIZE THE POTENTIAL FOR EROSION.



WRED-1 | EXTENDED DETENTION OUTLET SYSTEM
NOT TO SCALE



STATE LAW: 48 HOURS BEFORE EXCAVATING OR DEMOLISHING BUILDINGS, CALL 811 FOR FIELD LOCATION OF UNDERGROUND UTILITY LINES. THIS SERVICE LOCATES UTILITY OWNED LINES BUT NOT PRIVATE LINES.

THE LOCATIONS OF UNDERGROUND UTILITIES ARE SHOWN IN AN APPROXIMATE WAY ONLY AND HAVE NOT BEEN INDEPENDENTLY VERIFIED. THE EXACT LOCATION OF ALL UTILITIES (PUBLIC AND PRIVATE) MUST BE DETERMINED BEFORE COMMENCING WORK.

ORIGINAL ISSUE: 05/26/2017
 REVISIONS

No.	Description	Date

160301
 PROJECT NUMBER
 SEG JH/RAT
 DRAWN BY CHECKED BY

KEY PLAN

"AGORA"
 SITE GRADING PLAN -
 WETLAND
 RESTORATION
C4.6