



## Memorandum

**To:** Bassett Creek Watershed Management Commission  
**From:** Barr Engineering Co.  
**Subject:** Item 4E – Metro Transit C Line Bus Rapid Transit – Minneapolis, MN  
BCWMC October 19, 2017 Meeting Agenda  
**Date:** October 11, 2017  
**Project:** 23270051 2017 2140

### 4E Metro Transit C Line Bus Rapid Transit (BRT) – Minneapolis, MN BCWMC 2017-33

#### Summary:

**Proposed Work:** Rapid Bus Transit system from downtown Minneapolis to the Brooklyn Center Transit Center

**Basis for Review at Commission Meeting:** Linear project disturbing more than 5 acres

**Impervious Surface Area:** Decrease 0.42 acres

**Recommendation:** Conditional Approval

#### General Background & Comments

The proposed project is partially located in the Bassett Creek Main Stem subwatershed along Penn Avenue between Golden Valley Road and Lowry Avenue in Minneapolis, MN. The proposed project consists of construction of a new Bus Rapid Transit (BRT) system from downtown Minneapolis to the Brooklyn Center Transit Center. The proposed work includes intersection reconstruction at Penn Ave/Golden Valley Road and Penn Ave/Broadway, roadway reconstruction along Penn Avenue between Broadway and Lowry Avenue, and construction of bus station platforms at 11 intersections resulting in 5.5 acres of disturbance (grading). The proposed project results in a decrease in impervious surfaces of 0.4 acres from 5.4 acres in existing conditions to 5.0 acres in proposed conditions. The proposed project includes 5.0 acre of reconstructed impervious surfaces

#### Floodplain

The project does not involve work in the Bassett Creek floodplain.

#### Wetlands

The project does not involve work that impacts wetlands.

#### Stormwater Management

The drainage patterns under existing and proposed conditions will remain similar; this project will not result in major changes to land use or topography. This project may reduce stormwater volumes and rates by decreasing the amount of impervious surface within the project area.

## **Water Quality Management**

Linear projects on sites without restrictions that create one or more acres of net new impervious surfaces shall capture and retain onsite 1.1 inches of runoff from the net new impervious surfaces. The proposed project does not result in any net new impervious surfaces and therefore does not trigger water quality review or treatment to BCWMC water quality performance goals.

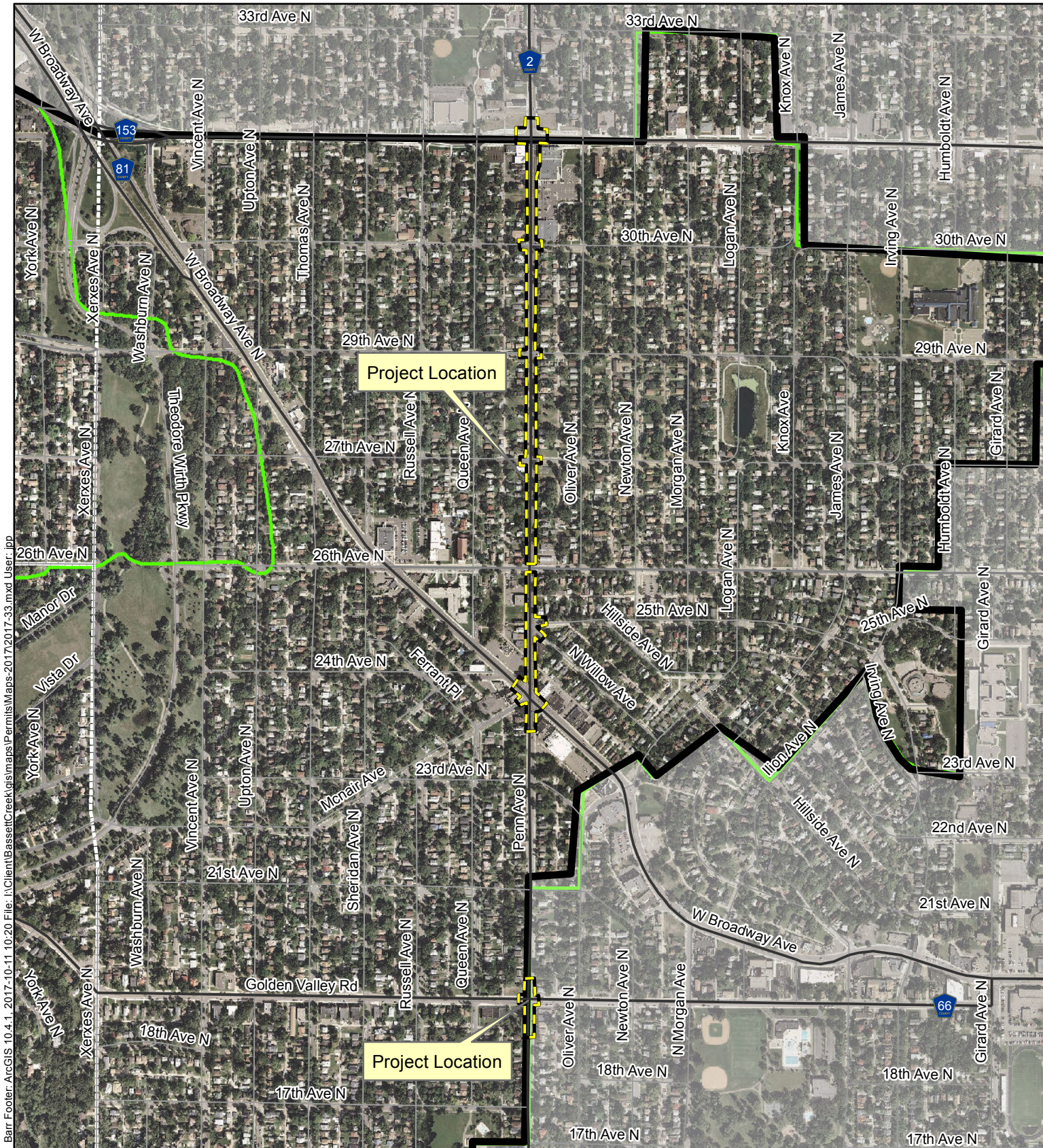
## **Erosion and Sediment Control**

Since the area to be disturbed (graded) for this linear project is greater than 1 acre, the proposed project must meet the BCWMC erosion and sediment control requirements. Proposed temporary erosion and sediment control features include sediment control logs, storm drain inlet protection, street sweeping, temporary seeding, and erosion control blankets. Permanent erosion and sediment control features includes sodding.

## **Recommendation**







Conditional approval based on the following comments:

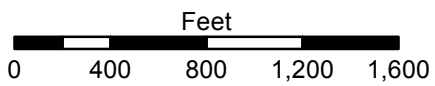
1. Storm drain inlet protection must be shown on Sheets 276-277 for existing catch basins.
2. Storm drain inlet protection must be shown on Sheets 278-282 for proposed catch basins.
3. Sediment control BMPs must be shown on Sheets 278-282 to limit offsite sediment transport during construction.
4. Revised Drawings (paper copy and final electronic files) must be provided to the BCWMC Engineer for final review and approval.



Barr Footer: ArcGIS 10.4.1, 2017-10-11 10:20 File: I:\Client\Bassett\Creek\gis\maps\Permits\Maps 2017\2017-33.mxd User: jpb

Imagery Source: Aerial Express (2009)

-  Project Location
-  Bassett Creek
-  WMC Boundary
-  Major Subwatershed
-  Municipality
-  Stream



**LOCATION MAP  
APPLICATION 2017-33  
Metro Transit C Line  
Rapid Bus Transit (RBT)  
Minneapolis, MN**