



FOUR SEASONS MALL REDEVELOPMENT

DECEMBER 19, 2019



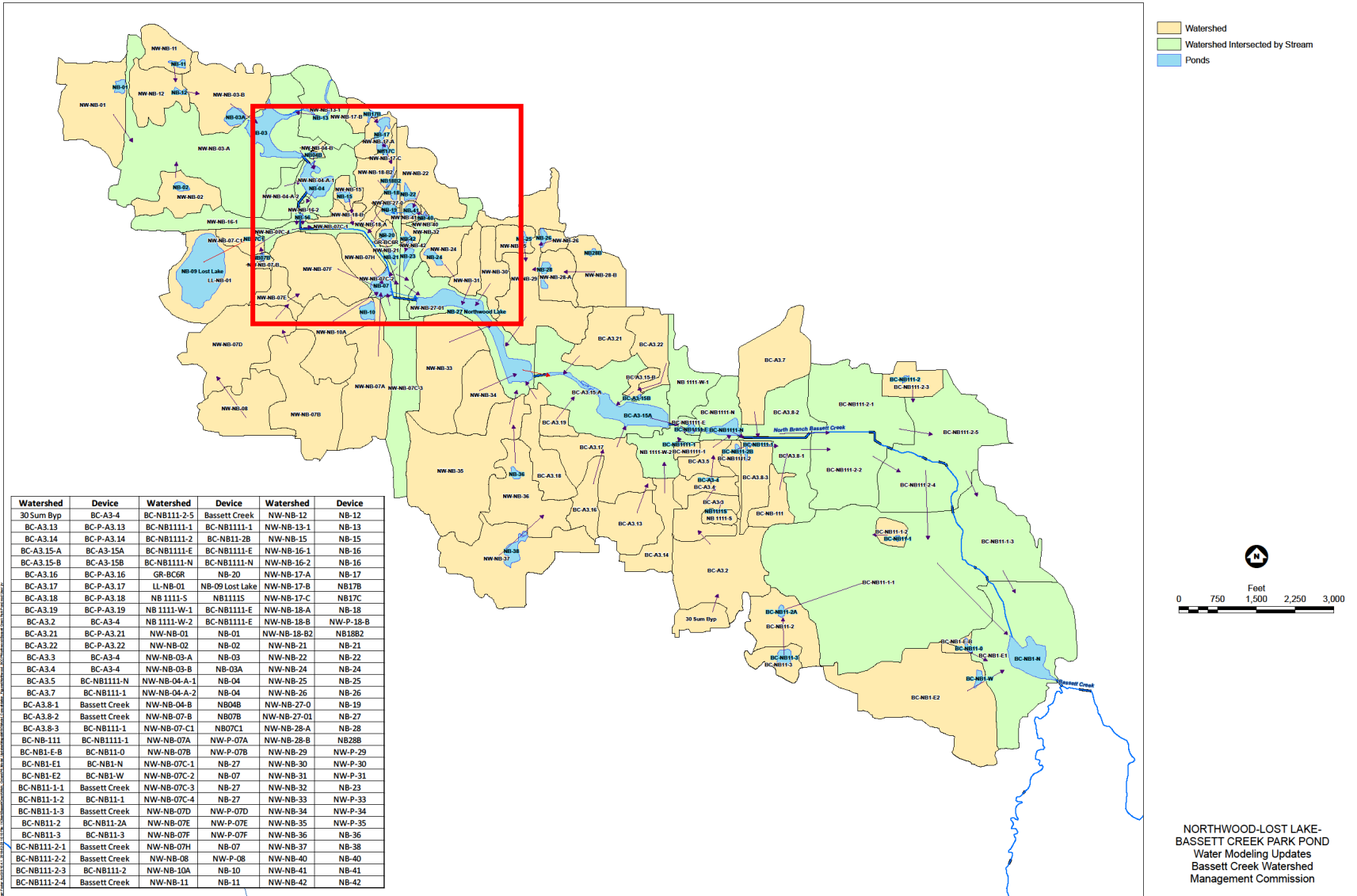


INTRODUCTIONS | DOMINIUM & LOUCKS

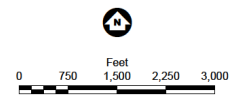


FOUR SEASONS MALL REDEVELOPMENT

SITE CONTEXT

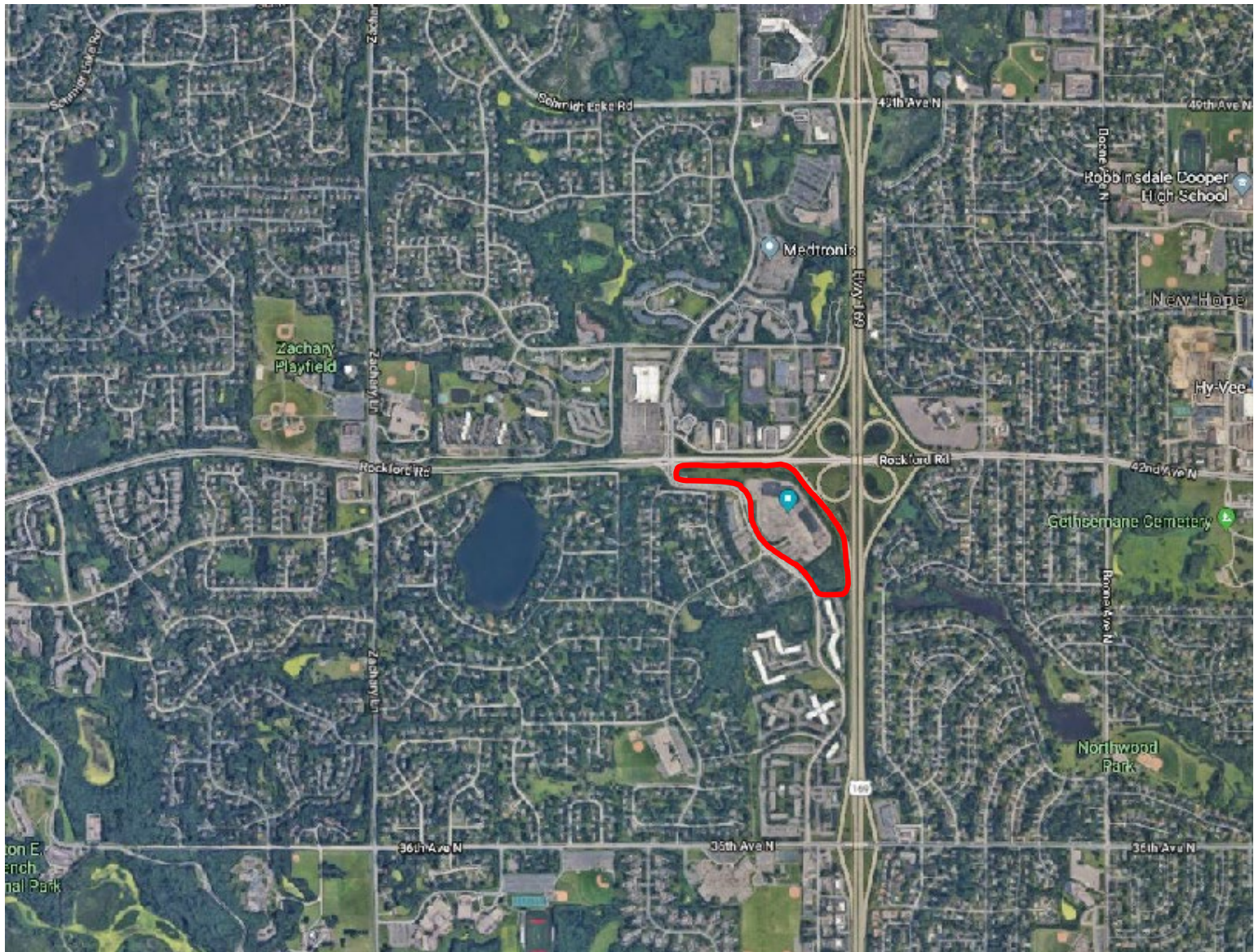


■ Watershed
■ Watershed Intersected by Stream
■ Ponds



NORTHWOOD-LOST LAKE-
 BASSETT CREEK PARK POND
 Water Modeling Updates
 Bassett Creek Watershed
 Management Commission

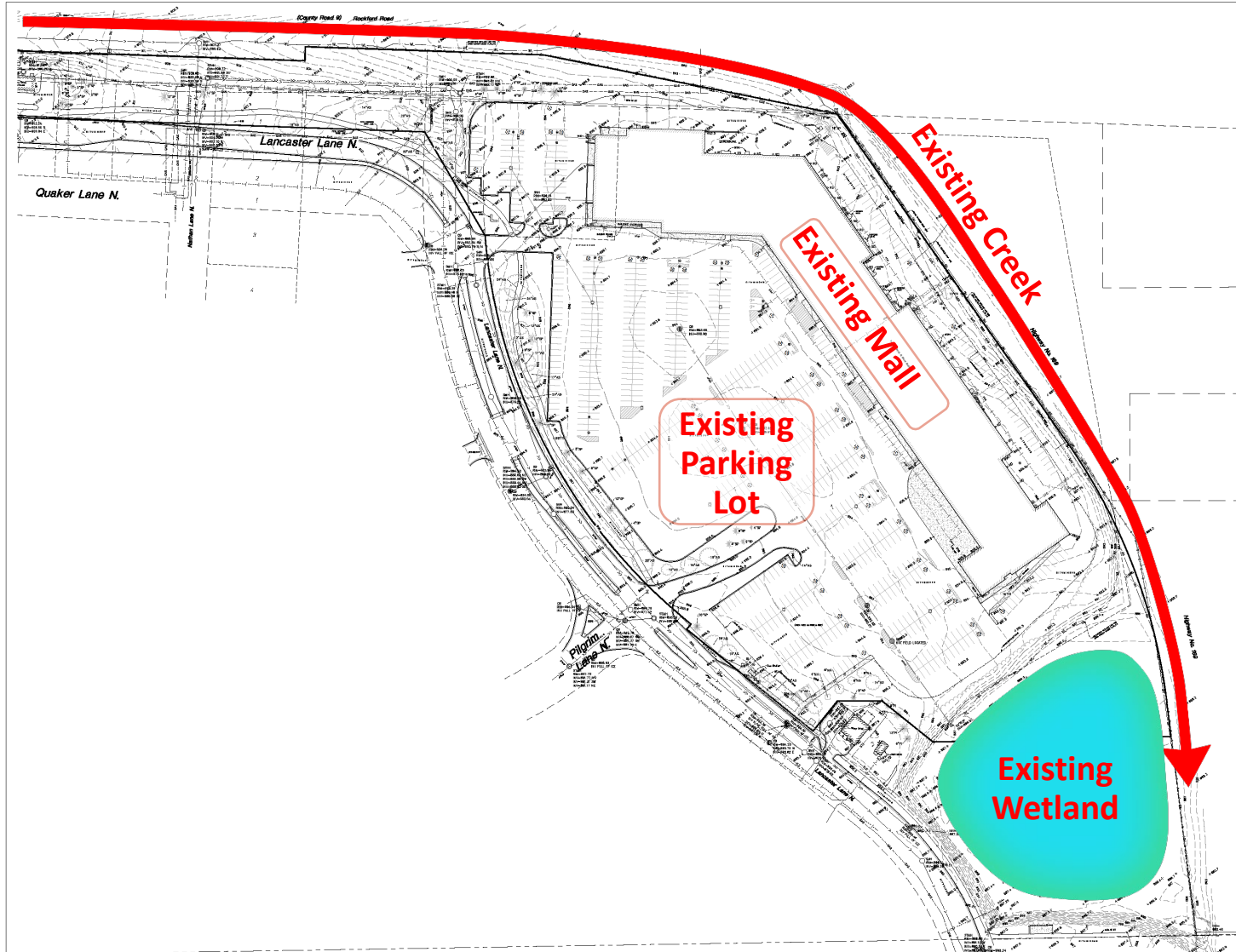
SITE CONTEXT



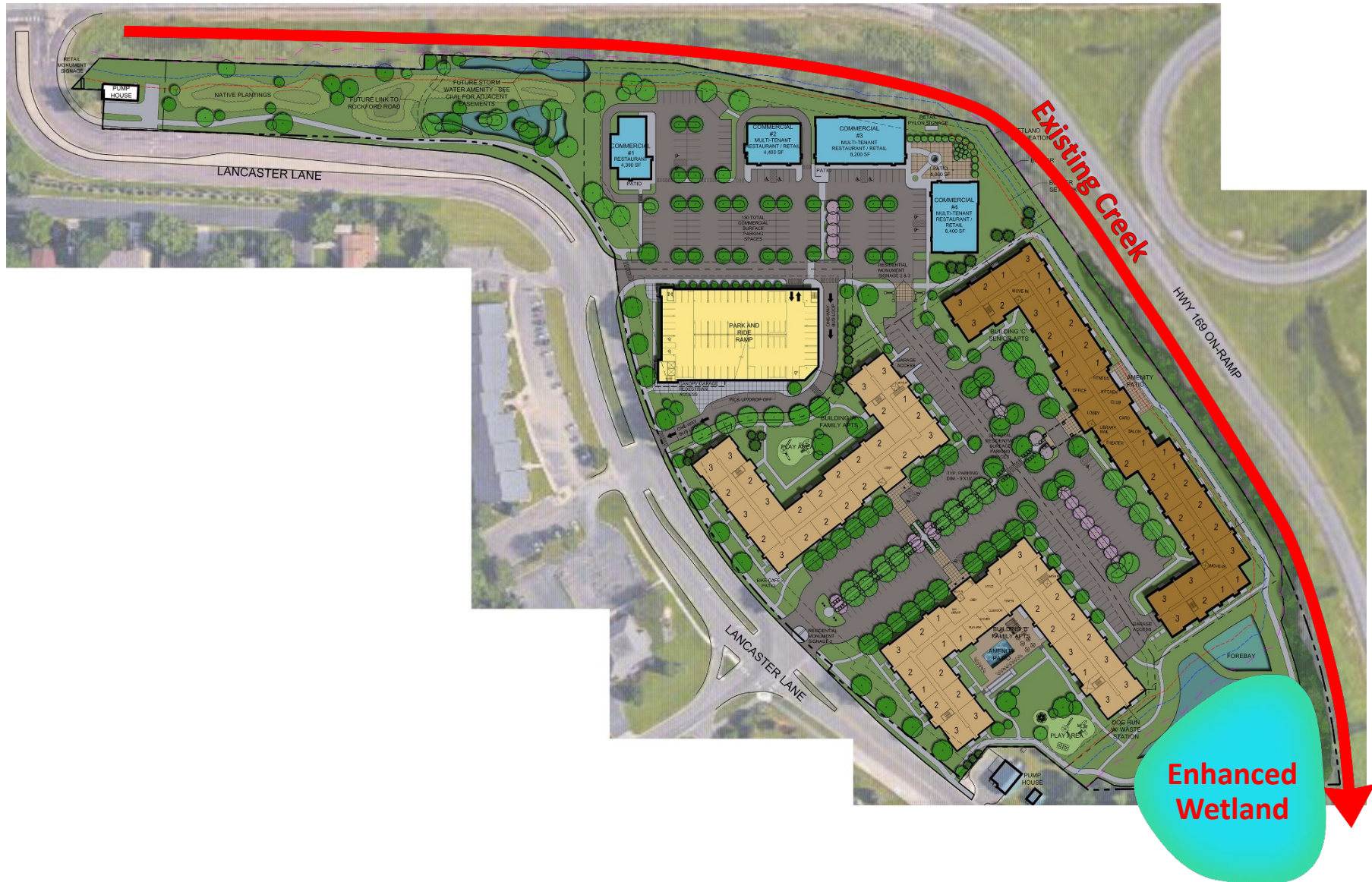
SITE CONTEXT



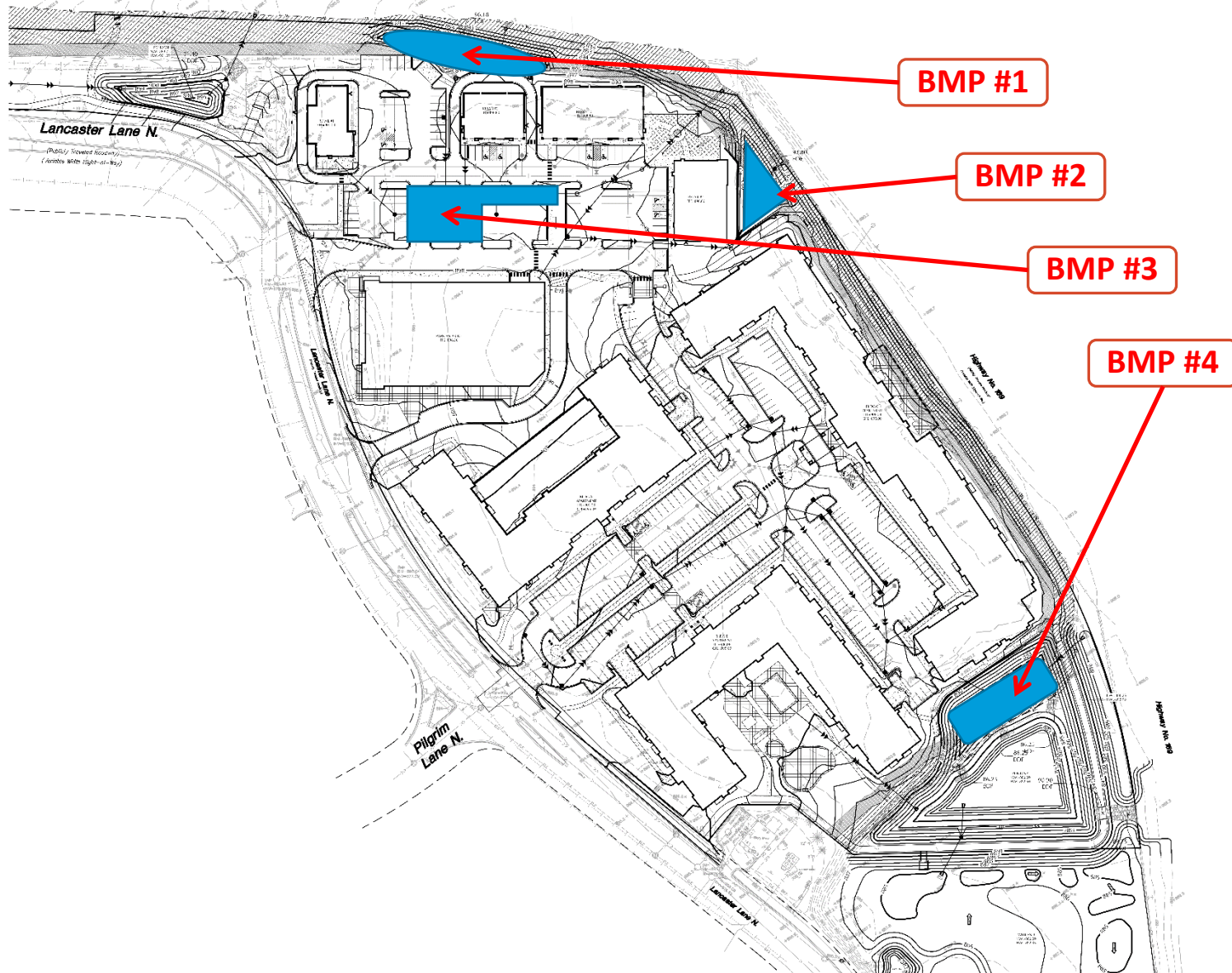
EXISTING CONDITIONS



PROPOSED SITE PLAN

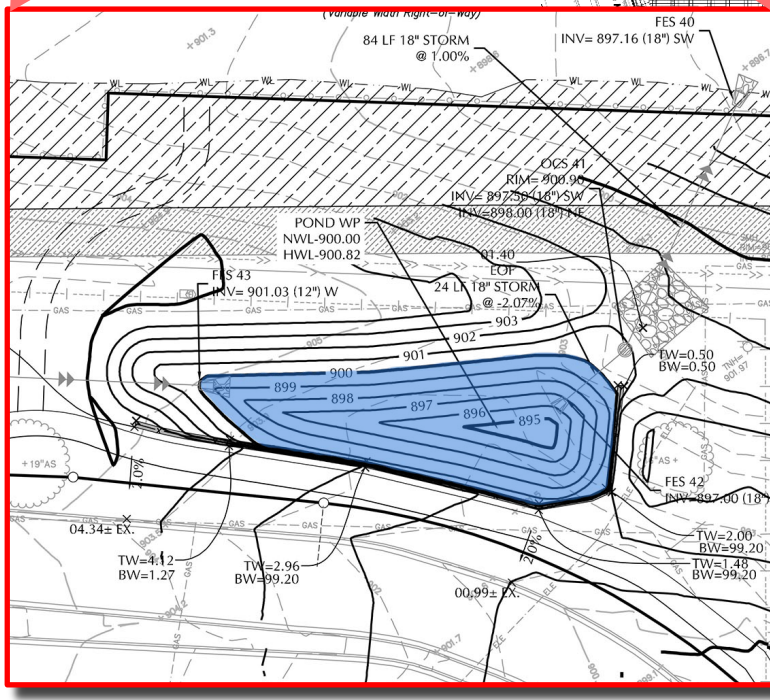
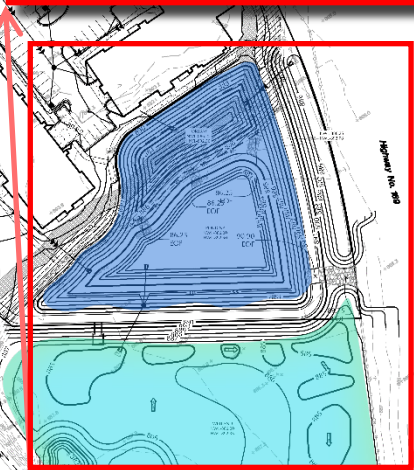
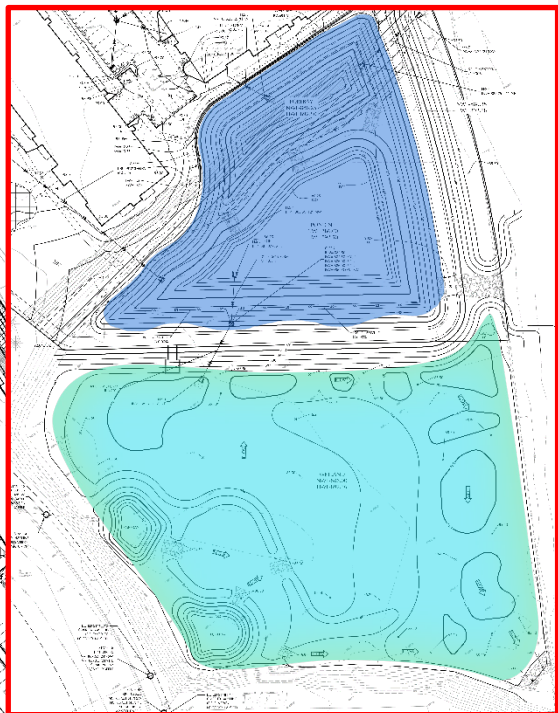
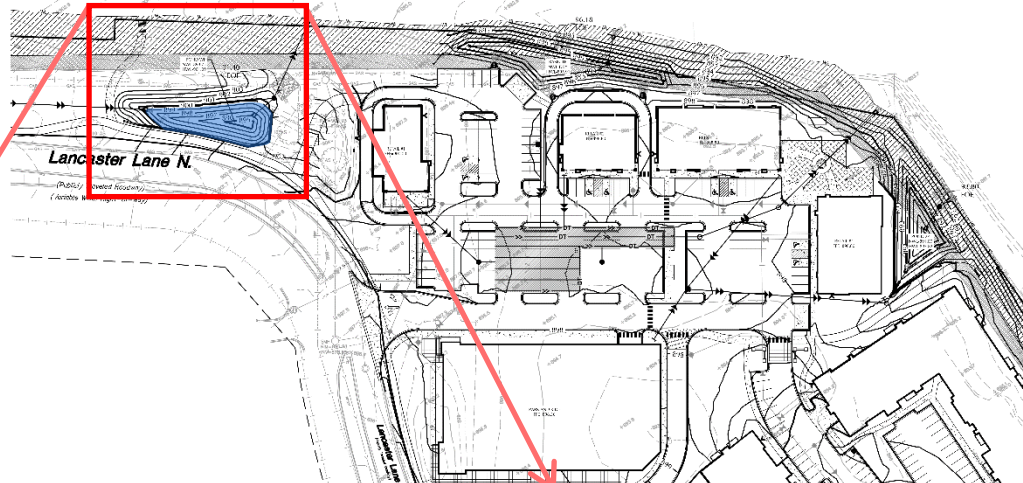


INTERNAL TREATMENT



FOUR SEASONS MALL REDEVELOPMENT

ABOVE AND BEYOND



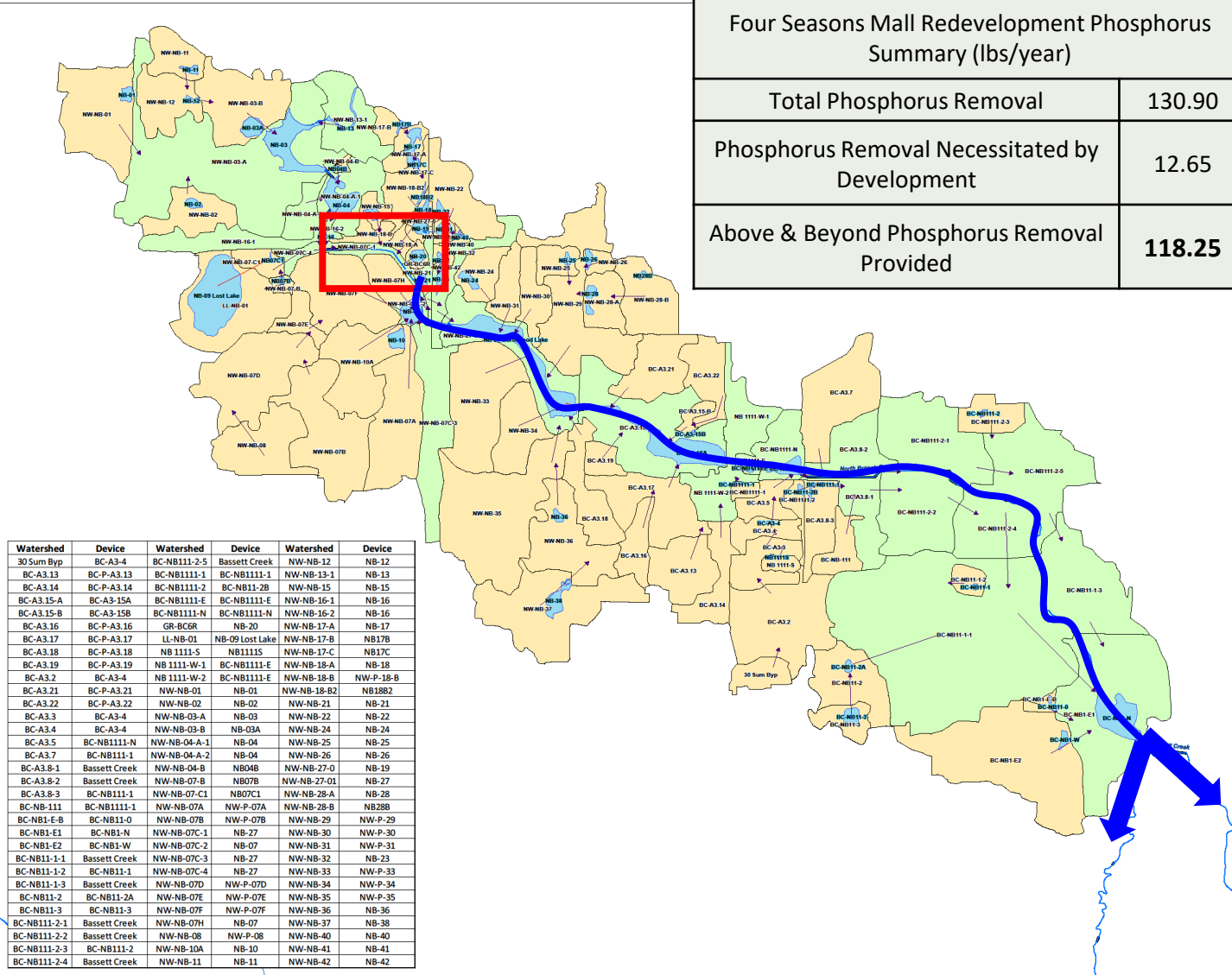
FOUR SEASONS MALL REDEVELOPMENT

PHOSPHORUS

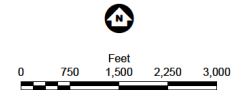
Four Seasons Mall Redevelopment Phosphorus Summary (lbs/year)

Total Phosphorus Removal	130.90
Phosphorus Removal Necessitated by Development	12.65
Above & Beyond Phosphorus Removal Provided	118.25

- Watershed
- Watershed Intersected by Stream
- Ponds



Watershed	Device	Watershed	Device	Watershed	Device
30 Sum Byp	BC-A3-4	BC-NB111-2-5	Bassett Creek	NW-NB-12	NB-12
BC-A3.13	BC-P-A3.13	BC-NB1111-1	BC-NB1111-1	NW-NB-13-1	NB-13
BC-A3.14	BC-P-A3.14	BC-NB1111-2	BC-NB111-2B	NW-NB-15	NB-15
BC-A3.15-A	BC-A3-15A	BC-NB1111-E	BC-NB1111-E	NW-NB-16-1	NB-16
BC-A3.15-B	BC-A3-15B	BC-NB1111-N	BC-NB1111-N	NW-NB-16-2	NB-16
BC-A3.16	BC-P-A3.16	GR-BCGR	NB-20	NW-NB-17-A	NB-17
BC-A3.17	BC-P-A3.17	LL-NB-01	NB-09 Lost Lake	NW-NB-17-B	NB17B
BC-A3.18	BC-P-A3.18	NB 1111-5	NB11115	NW-NB-17-C	NB17C
BC-A3.19	BC-P-A3.19	NB 1111-W-1	BC-NB1111-E	NW-NB-18-A	NB-18
BC-A3.2	BC-A3-4	NB 1111-W-2	BC-NB1111-E	NW-NB-18-B	NW-P-18-B
BC-A3.21	BC-P-A3.21	NW-NB-01	NB-01	NW-NB-18-B2	NB18B2
BC-A3.22	BC-P-A3.22	NW-NB-02	NB-02	NW-NB-21	NB-21
BC-A3.3	BC-A3-4	NW-NB-03-A	NB-03	NW-NB-22	NB-22
BC-A3.4	BC-A3-4	NW-NB-03-B	NB-03A	NW-NB-24	NB-24
BC-A3.5	BC-NB1111-N	NW-NB-04-A-1	NB-04	NW-NB-25	NB-25
BC-A3.7	BC-NB111-1	NW-NB-04-A-2	NB-04	NW-NB-26	NB-26
BC-A3.8-1	Bassett Creek	NW-NB-04-B	NB04B	NW-NB-27-0	NB-19
BC-A3.8-2	Bassett Creek	NW-NB-07-B	NB07B	NW-NB-27-01	NB-27
BC-A3.8-3	BC-NB111-1	NW-NB-07-C1	NB07C1	NW-NB-28-A	NB-28
BC-NB-111	BC-NB1111-1	NW-NB-07A	NW-P-07A	NW-NB-28-B	NB28B
BC-NB1-E-B	BC-NB11-0	NW-NB-07B	NW-P-07B	NW-NB-29	NW-P-29
BC-NB1-E1	BC-NB1-N	NW-NB-07C-1	NB-27	NW-NB-30	NW-P-30
BC-NB1-E2	BC-NB1-W	NW-NB-07C-2	NB-07	NW-NB-31	NW-P-31
BC-NB11-1-1	Bassett Creek	NW-NB-07C-3	NB-27	NW-NB-32	NB-23
BC-NB11-1-2	BC-NB11-1	NW-NB-07C-4	NB-27	NW-NB-33	NW-P-33
BC-NB11-1-3	Bassett Creek	NW-NB-07D	NW-P-07D	NW-NB-34	NW-P-34
BC-NB11-2	BC-NB11-2A	NW-NB-07E	NW-P-07E	NW-NB-35	NW-P-35
BC-NB11-3	BC-NB11-3	NW-NB-07F	NW-P-07F	NW-NB-36	NB-36
BC-NB111-2-1	Bassett Creek	NW-NB-07H	NB-07	NW-NB-37	NB-38
BC-NB111-2-2	Bassett Creek	NW-NB-08	NW-P-08	NW-NB-40	NB-40
BC-NB111-2-3	BC-NB111-2	NW-NB-10A	NB-10	NW-NB-41	NB-41
BC-NB111-2-4	Bassett Creek	NW-NB-11	NB-11	NW-NB-42	NB-42



NORTHWOOD-LOST LAKE-
BASSETT CREEK PARK POND
Water Modeling Updates
Bassett Creek Watershed
Management Commission



2905 Northwest Boulevard, #150

Plymouth, MN 55441

763.354.5500

www.dominiumapartments.com



7200 Hemlock Lane, Suite 300

Maple Grove, MN 55369

763.424.5505

www.loucksinc.com

QUESTIONS

