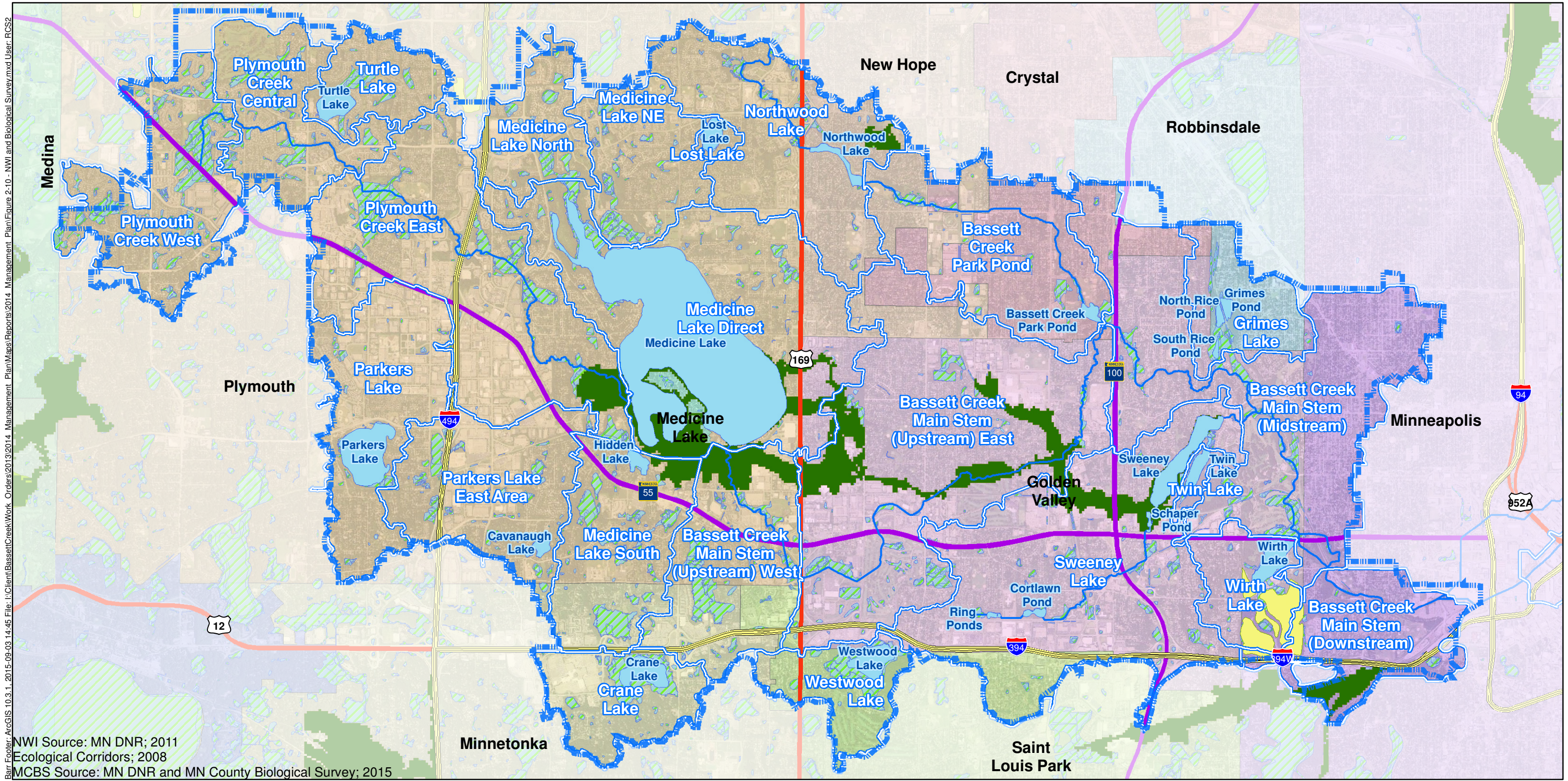


Barr, Ecojour: ArcGIS 10.3.1, 2015-09-03 14:45 File: I:\Client\BassettCreek\Work\_Orders\2013\2014\_Management\_Plan\Map\BassettCreekWork\_Orders\2013\2014\_Management\_Plan\Figure 2-10 - NWI and Biological Survey.mxd User: RCS2



NWI Source: MN DNR; 2011  
 Ecological Corridors; 2008  
 MCBS Source: MN DNR and MN County Biological Survey; 2015

- |  |  |
|--|--|
|  | <b>Sites of Biodiversity Significance (MCBS)</b> |
|  | Outstanding                                      |
|  | High   |
|  | Moderate   |
|  | Below  |

See section 2.6.3 and section 2.9 of the plan for more information about the data presented in this figure.

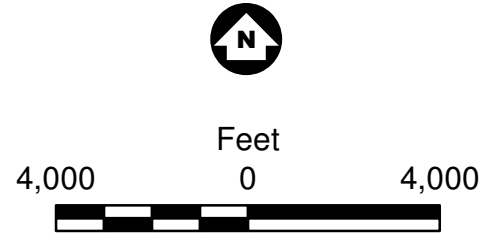


Figure 2-10

NATIONAL WETLAND INVENTORY  
 AND BIOLOGICAL SURVEY  
 Bassett Creek Watershed  
 Management Commission  
 2015 Management Plan