

# Bassett Creek Watershed Management Commission

- Watershed Plan Overview -  
BWSR Metro Region Committee  
August 4, 2015



# Bassett Creek WMC

Formed in 1969 to focus on flood control along Bassett Creek.

Includes parts of 9 cities:

- Crystal
- Golden Valley
- Medicine Lake
- Minneapolis
- Minnetonka
- New Hope
- Plymouth
- Robbinsdale
- St. Louis Park

## **Vision Statement:**

*Stewardship of water resources to protect and enhance our communities*

## **Commission Funding:**

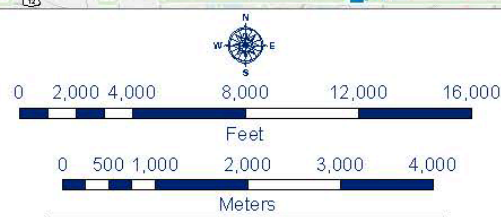
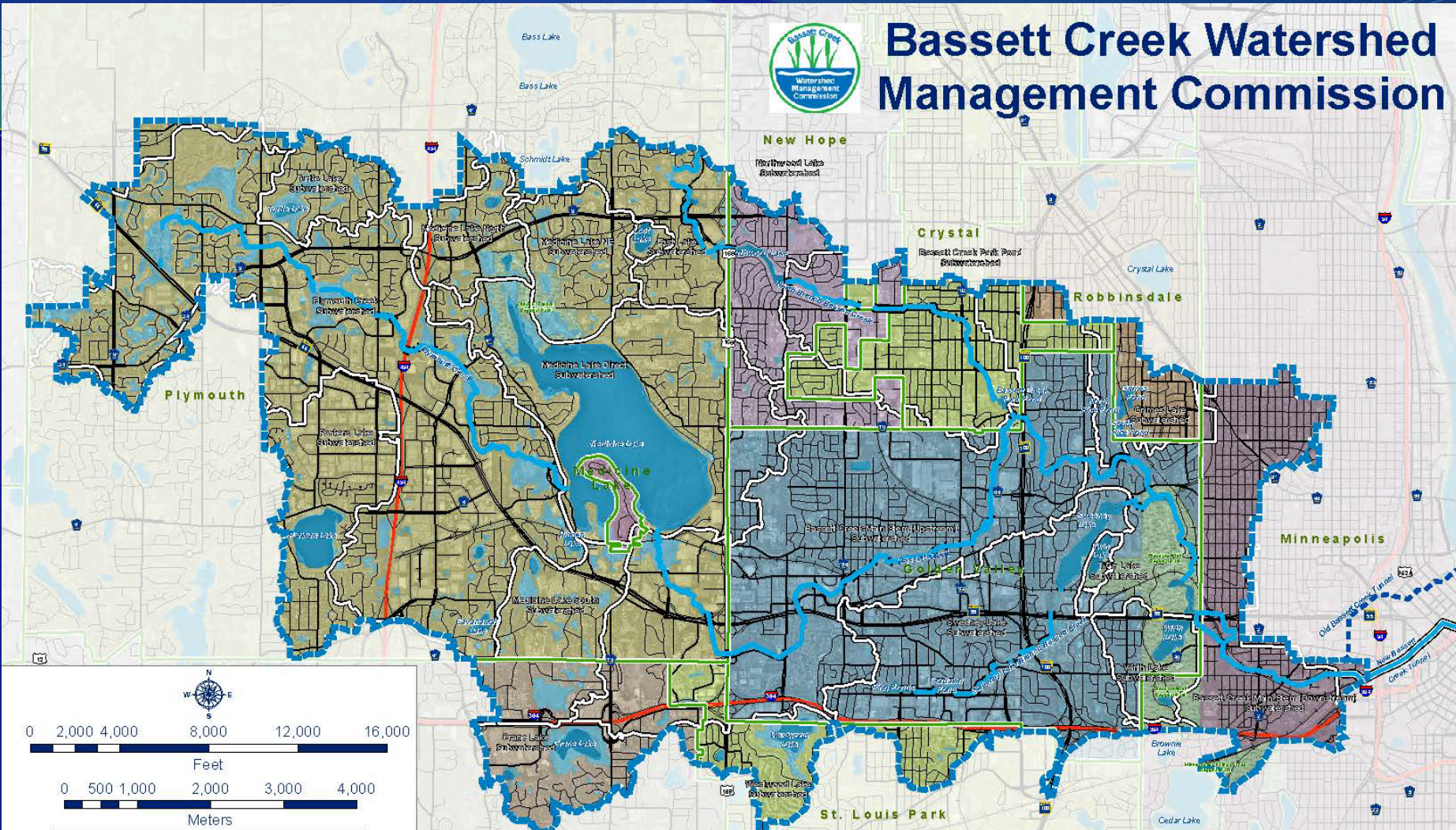
- Contributions from 9 member cities
- Hennepin County tax levy for major projects
- Grant funds and permit fees



Photo: Dan Johnson



# Bassett Creek Watershed Management Commission

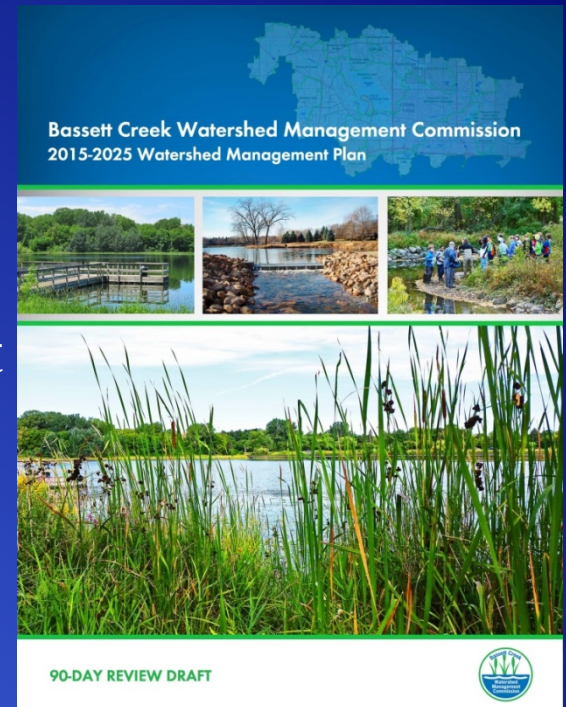


	Bassett Creek Watershed		Old Trench
	Major Subwatersheds		Open Channel
	City Boundaries		Culvert
	Regional Parks		Tunnel

- Greater than 40 mi<sup>2</sup>; Tributary to Mississippi River
- 4 major subwatersheds: Mainstem, Medicine Lake Branch (Plymouth Creek), North Branch, Sweeney Lake Branch
- Multiple lakes: Medicine, Westwood, Wirth, Twin, Sweeney, Lost, Northwood, Parkers, Turtle, Crane, others

# BCWMC Watershed Management Plan

- 2011: Began gathering input
- 2012: Gaps analysis of 2004 Plan
- 2013: WAVE process for stakeholder input
  - Online survey (174 responses)
  - 10 small group meetings (cities, lake groups)
  - Watershed Summit
- 24 Plan Steering Committee meetings
- 4 Commission-Agency-Partner workshops
- Revisions in response to comments received from agencies and partners in 60-day review
- Public hearing May 21, 2015



# BCWMC Watershed Management Plan



- Addresses watershed issues with policies and standards related to:
  - Water Quality
  - Flooding and Rate Control
  - Groundwater Management
  - Erosion and Sediment Control
  - Stream Restoration and Protection
  - Wetland Management
  - Public Ditches
  - Recreation, Habitat, and Shoreland Mgmt
  - Education and Outreach
  - Administration
- *Requirements for Improvements and Development Proposals* updated concurrently with the Plan

# Priority Policies & Strategies:

## Begin implementation of MPCA's Minimal Impact Design Standards (MIDS)

- Takes advantage of opportunity to improve conditions during redevelopment – a significant activity in this watershed
- Developed over several years with much input from various stakeholders and technical analysis
- MIDS Calculator “levels playing field” for assumptions and calculations for effects of various BMPs
- Guidance includes “off ramps” for projects that can't meet certain criteria, including infiltration (volume control)

# Priority Policies & Strategies:

Continue robust Capital Improvement Program (CIP)

- In partnership with cities
- Funding
  - ~ \$1 million ad valorem tax through Hennepin County
  - Grants
  - City contributions
- Wirth Lake Outlet Project – resulted in removing Wirth Lake from impaired water list



# Northwood Lake Improvement Project

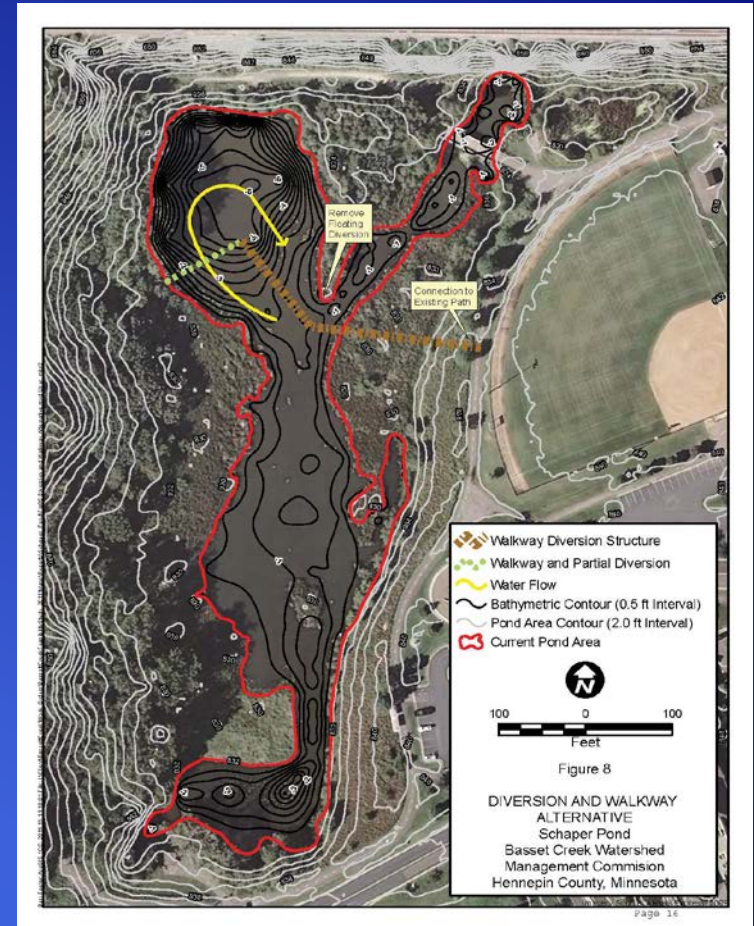
- Addresses nutrient impairment in Northwood Lake
- Treats runoff from 110 acres of residential land
- Captures 160,000 gallons of storm water for reuse to irrigate ballfields
- Includes raingardens and educational signage
- Received Clean Water Partnership Grant
- Has strong community support





# Schaper Pond Diversion Project

- Implements nutrient TMDL in Sweeney Lake
- Diverts water to NW lobe of existing pond to settle more pollutants (water takes longer path through pond)
- Will remove estimated 80- 150 lbs phosphorus a year
- Estimated design/construction costs = \$612,000
- Construction slated for this summer



# 2015 Bassett Creek Restoration Project

- Restores and stabilizes approximately 1.8 miles of stream banks on the creek in Golden Valley
- Mostly along residential properties
- Uses combination of soft armoring (biostabilization) and hard armoring like rock toes



# Priority Policies & Strategies:

Continue to monitor water quality and quantity in all priority waterbodies

- Adding stream water quality & flow monitoring (plus WOMP station)
- Lake water quality monitoring
- Lake level monitoring
- Zooplankton, phytoplankton, aquatic plant monitoring
- Stream invertebrate monitoring
- Partnering with volunteers, park districts, agencies



# Priority Policies & Strategies:

Continue partnering with cities, lake groups, park districts, residents, and state agencies

- Projects
- Education
- Monitoring
- Development Reviews



Moving Forward Through  
Collaboration  
Cooperation  
Communication

# 90-day Review Comments

City of Minneapolis – MnDOT - MN Department of Ag

- Minor edits to clarify inventory information
- Some requests for minor revisions/clarifications to a few policies
- Responses drafted for Commission consideration at August 20<sup>th</sup> meeting



# Thank You!

The BCWMC thanks the Plan Steering Committee, cities, state review agencies, public meeting attendees, and other stakeholders who participated in the development and review of this Watershed Management Plan!



# Questions or Comments?

Bassett Creek Watershed Management Commission  
2015-2025 Watershed Management Plan



90-DAY REVIEW DRAFT

