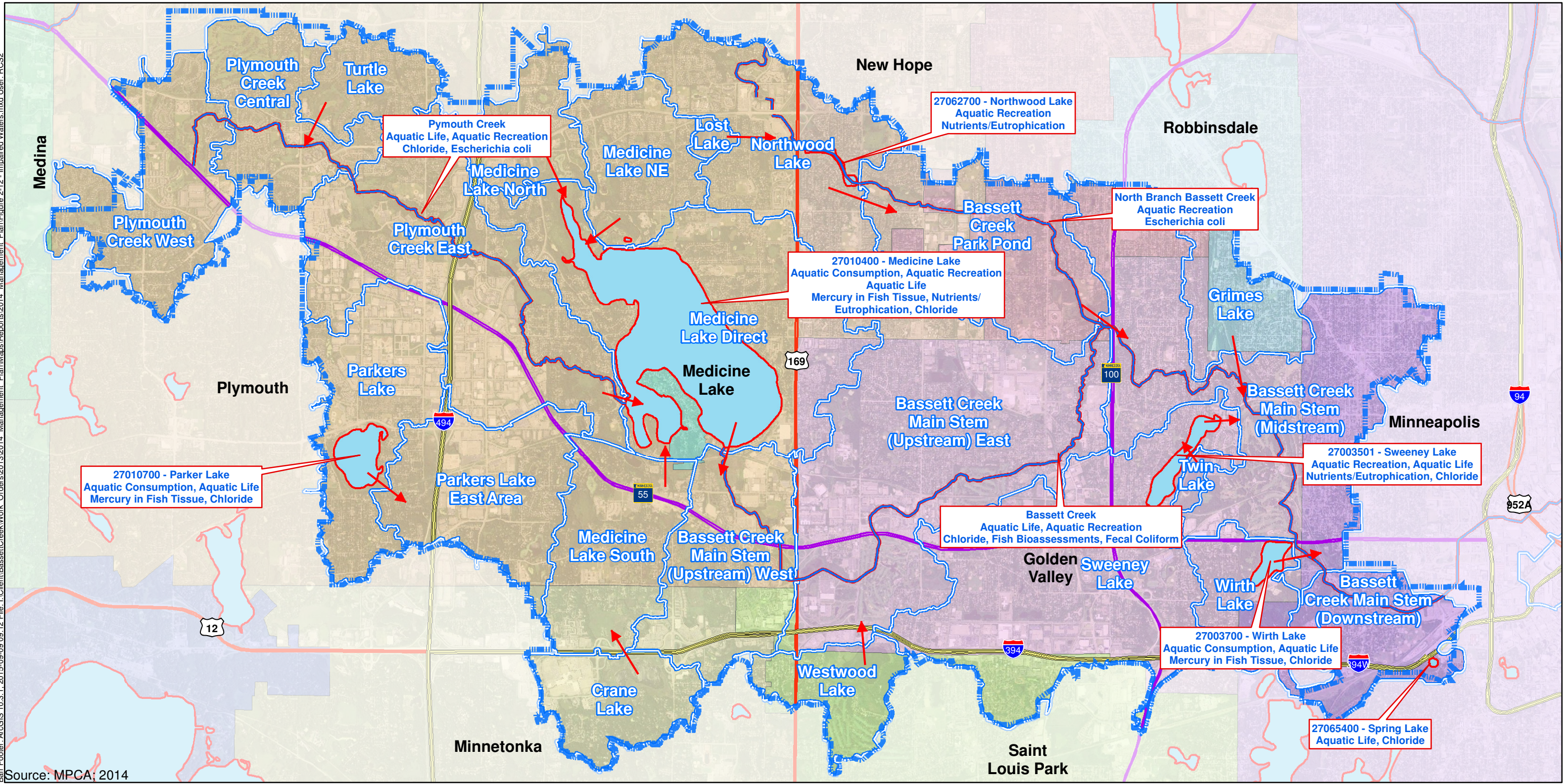


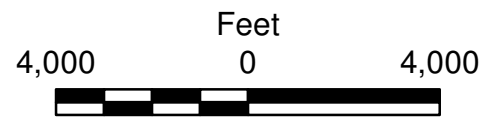
Barr Footer: ArcGIS 10.3.1, 2015-09-09 09:12 File: I:\Client\BassettCreek\Work Orders\2013\2014 Management Plan\Maps\Reports\2014 Management Plan\Figure 2-12 - Impaired Waters.mxd User: RGS2



Source: MPCA; 2014

- BCWMC Jurisdictional Boundary
- Major Subwatersheds
- Flow Directions
- Impaired Streams
- Impaired Lakes

North Branch Bassett Creek Aquatic Recreation Escherichia coli	← Name/Public Waters ID ← Impaired Uses ← Pollutant/Stressors
--	---



Data based on the 2014 MPCA 303(d) Impaired Water List. See section 2.7.2.1 of the plan for more information about impaired waters and the MPCA's 303(d) Impaired Waters List.

Figure 2-12

MPCA 303(d) IMPAIRED WATERS
 Bassett Creek Watershed
 Management Commission
 2015 Management Plan

