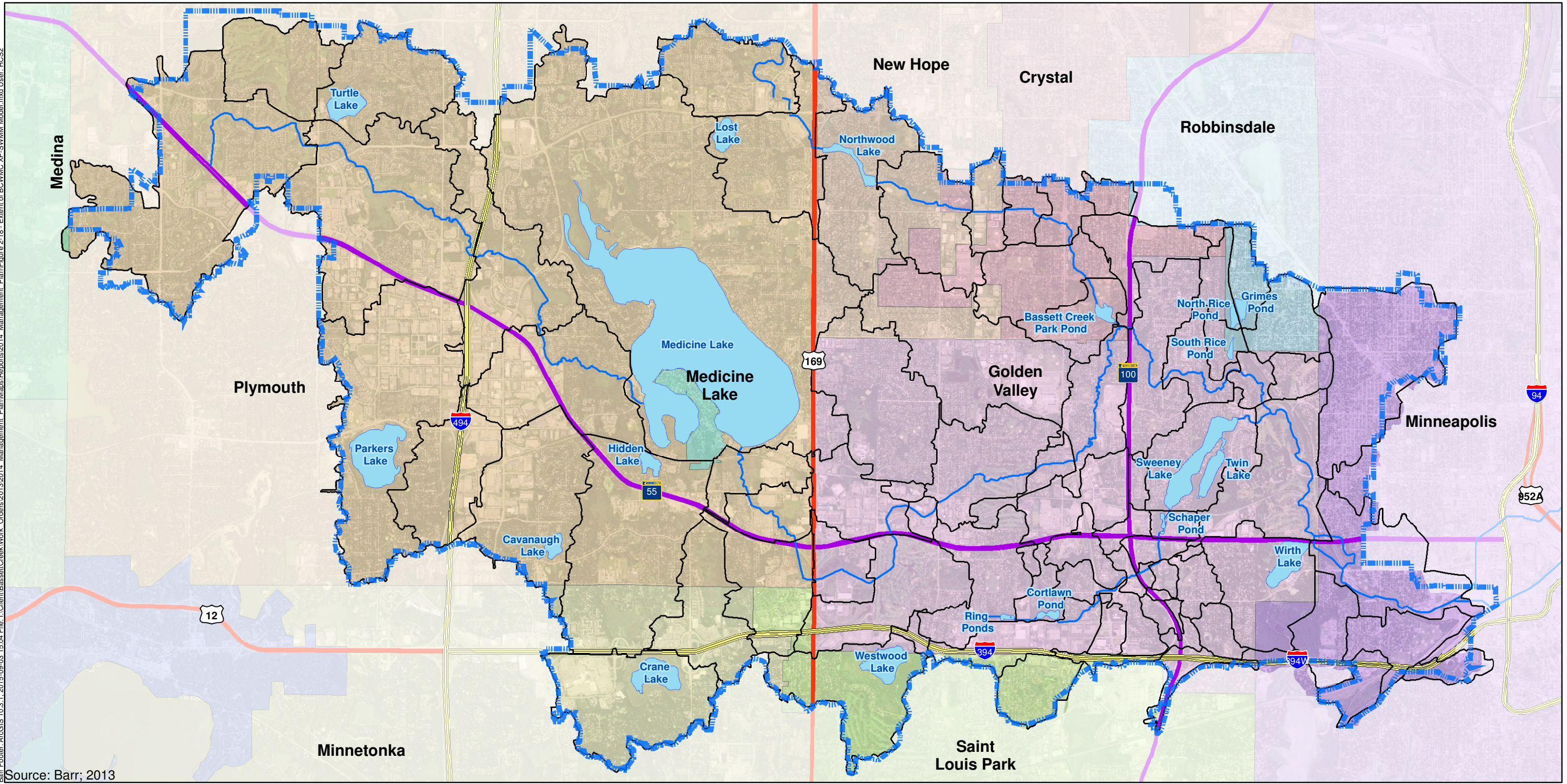






Barr Footer-ArcGIS 10.3.1\_2015-09-03 15:04 File: I:\Client\BassettCreek\Work Orders\2013\2014\_Management\_Plan\Map\Reports\2014\_Management\_Plan\Figure 2-18 - Extent of BCWMC XP-SWMM Model.mxd User: RCSS



Source: Barr; 2013

-  BCWMC Jurisdictional Boundary
-  Watersheds Used in XP-SWMM Model
-  Creeks
-  Lakes and Ponds

See section 2.8.6.1 for more information about the BCWMC watershed-wide XP-SWMM hydrologic and hydraulic model.

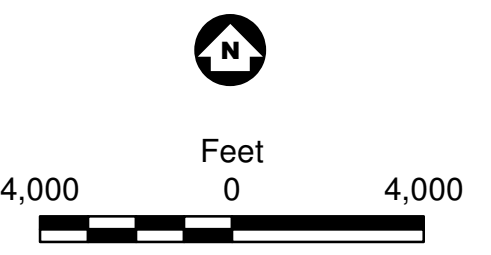


Figure 2-18

WATERSHEDS USED IN BCWMC XP-SWMM MODEL  
Bassett Creek Watershed Management Commission  
2015 Management Plan