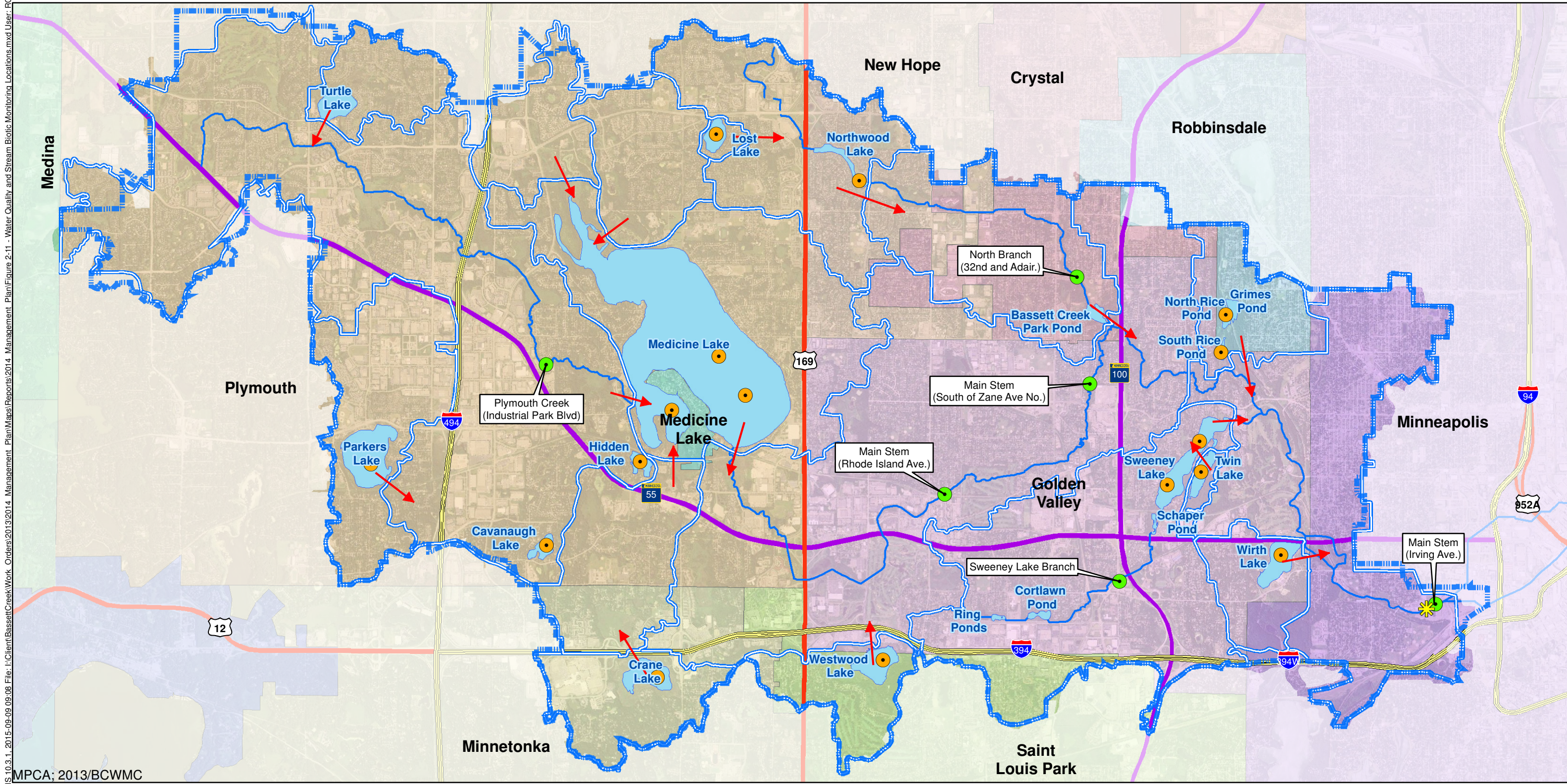


Barr Footer: ArcGIS 10.3.1, 2015-09-09 09:08 File: I:\Client\BassettCreek\Work Orders\2013\2014 Management Plan\Maps\Reports\2014 Management Plan\Figure 2-11 - Water Quality and Stream Biotic Monitoring Locations.mxd User: RGS



MPCA; 2013/BCWMC

- BCWMC Jurisdictional Boundary
- Major Subwatersheds
- Flow Directions
- Creeks
- Chemical Water Quality Monitoring Station (BCWMC or Citizen Assisted Monitoring Program)
- Biotic Monitoring Locations (BCWMC)
- Watershed Outlet Monitoring Program (WOMP) Station

See section 2.7.1 of the plan for more information regarding the monitoring programs and locations illustrated in this figure.

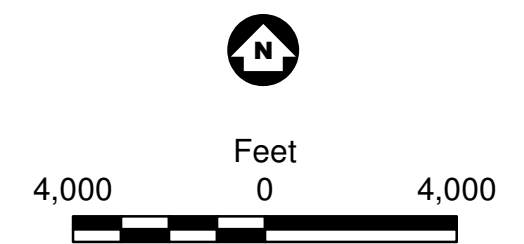


Figure 2-11

WATER QUALITY AND STREAM
 BIOTIC MONITORING LOCATIONS
 Bassett Creek Watershed
 Management Commission
 2015 Management Plan