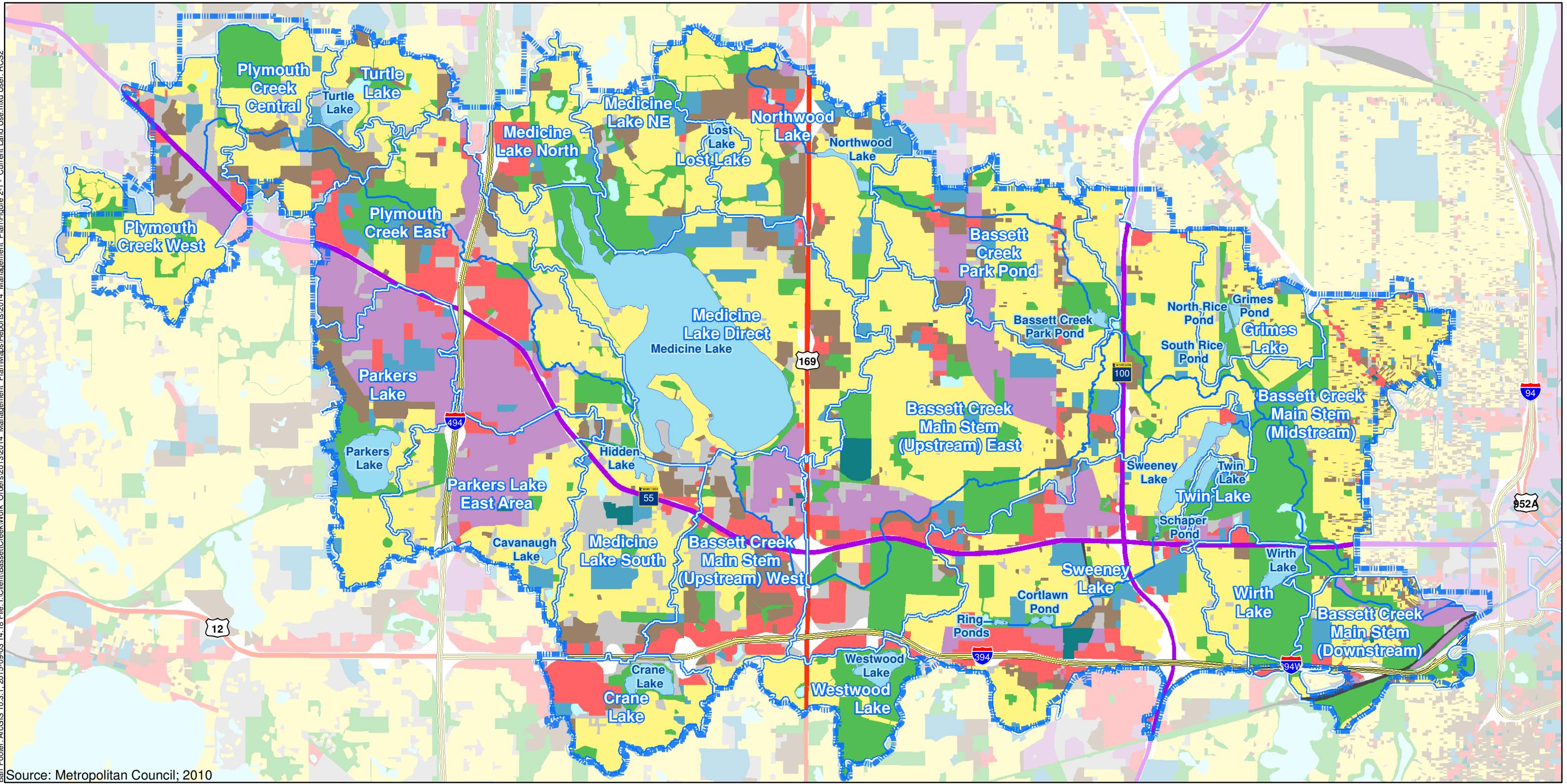


Barr Footer: ArcGIS 10.3.1, 2015-09-03 14:18 File: I:\Client\BassettCreek\Work_Orders\2013\2014_Management_Plan\Map\Figure 2-1_ Current Land Use.mxd User: RCS2



Source: Metropolitan Council; 2010

- | | | |
|-------------------------------|--|--------------------------------|
| BCWMC Jurisdictional Boundary | Metropolitan Council 2010 Generalized Landuse | Mixed Use |
| Major Subwatersheds | Agricultural | Park, Recreational or Preserve |
| Creeks | Single Family Residential | Rights-of-Way (i.e., Roads) |
| | Multifamily Residential | Railway (inc. LRT) |
| | Commercial | Vacant or Unknown |
| | Industrial | Water |
| | Institutional | |

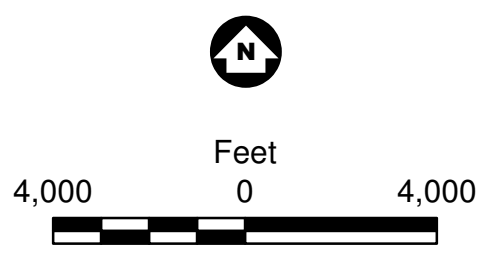
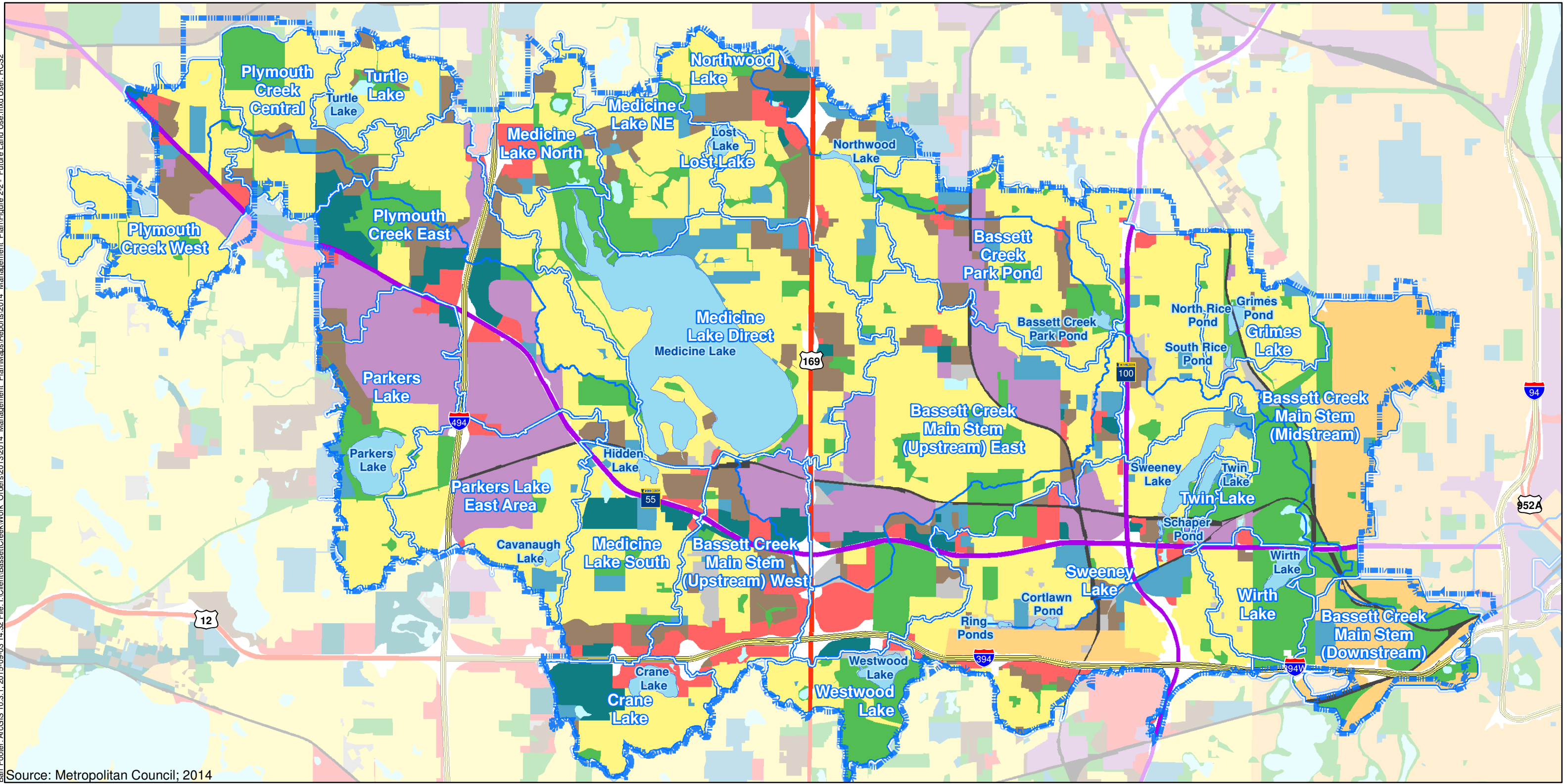


Figure 2-1

2010 LAND USE
 Bassett Creek Watershed
 Management Commission
 2015 Management Plan

Barr Footer: ArcGIS 10.3.1, 2015-09-03 14:32 File: I:\Client\BassettCreek\Work_Orders\2013\2014_Management_Plan\Map\BassettCreekWork_Orders\2013\2014_Management_Plan\Figure 2-2 - Future Land Use.mxd User: RCS2



Source: Metropolitan Council; 2014

- | | | |
|-------------------------------|--|-----------------------------|
| BCWMC Jurisdictional Boundary | Metropolitan Council - Planned Land Use | Institutional |
| Major Subwatersheds | Single Family Residential | Mixed Use |
| Creeks | Agricultural | Park and Recreation |
| | Urban Residential | Rights-of-Way (i.e., Roads) |
| | Multifamily Residential | Railway (inc. LRT) |
| | Commercial | Vacant or Unknown |
| | Industrial | Open Water |

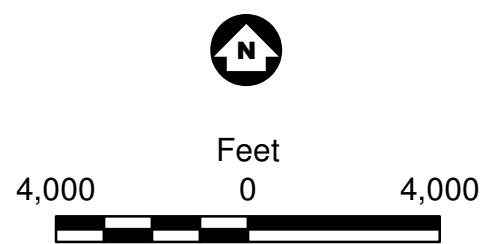
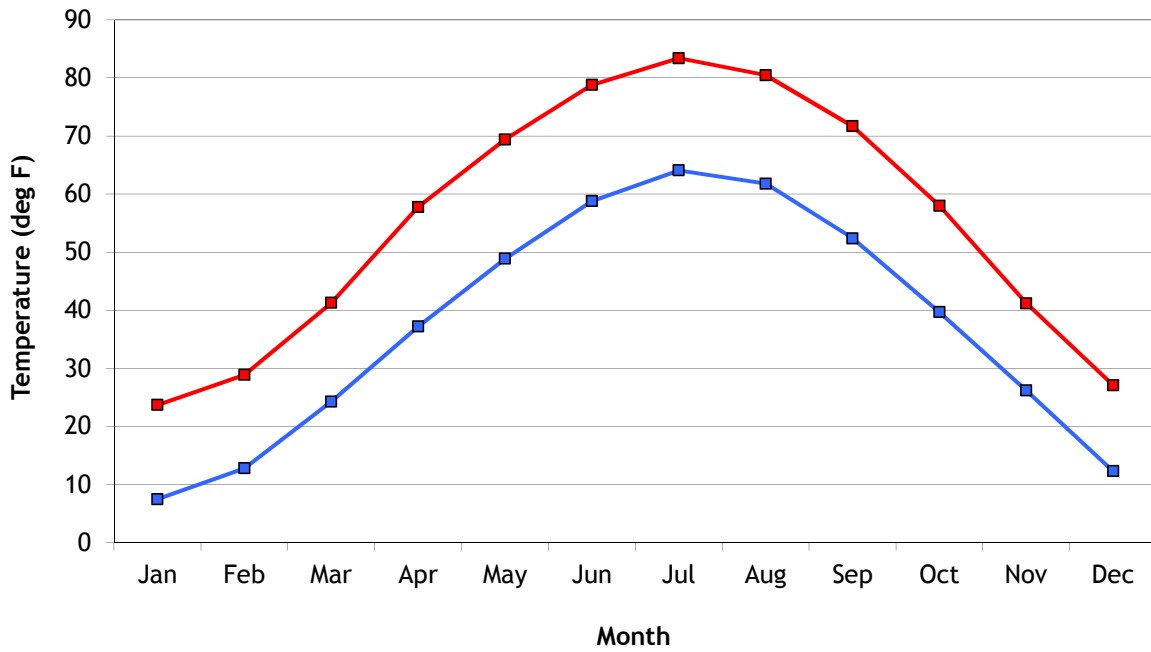


Figure 2-2

2030 LAND USE
 Bassett Creek Watershed
 Management Commission
 2015 Management Plan

Average High and Low Temperatures



Average Monthly Precipitation

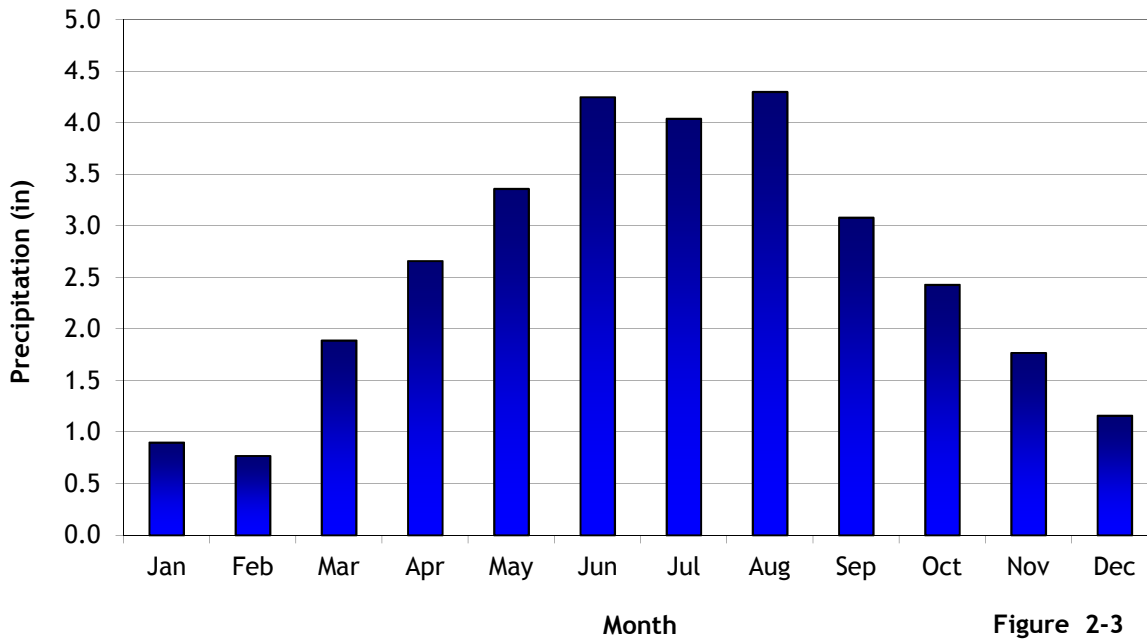
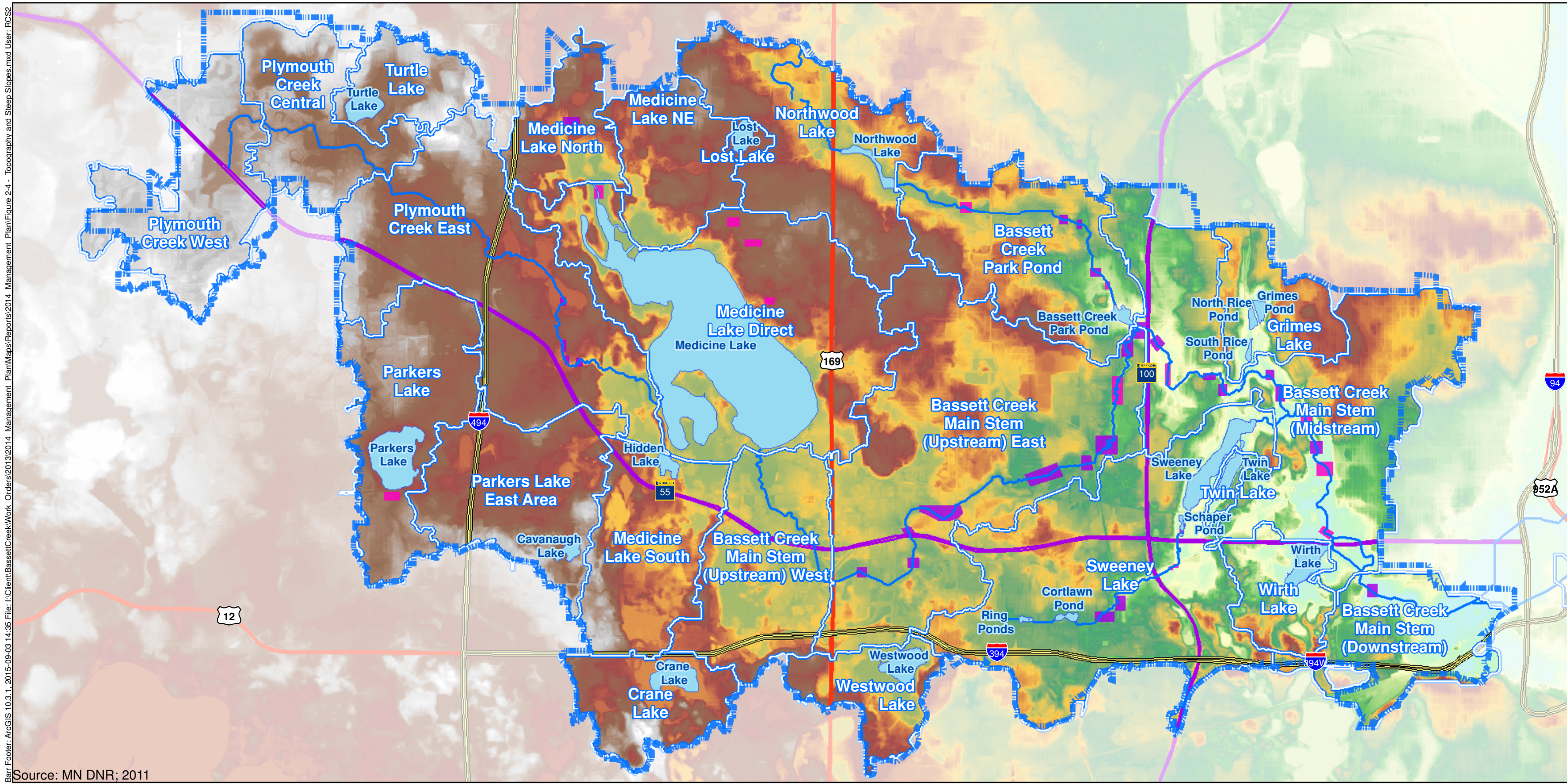


Figure 2-3
Average Monthly High & Low
Temperatures and Precipitation
for Minneapolis-St. Paul
International Airport
(1981-2010)



Source: MN DNR; 2011

- BCWMC Jurisdictional Boundary
 - Major Subwatersheds
 - Creeks
 - Erosion
 - Sedimentation
- MN DNR LiDAR, 2011**
(Feet)
- High : 326.101
 - Low : 243.034

Erosion and sedimentation sites are based on figure 13 of the 2004 plan.

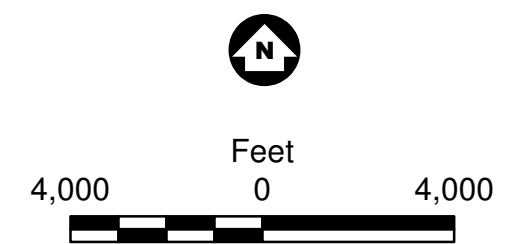
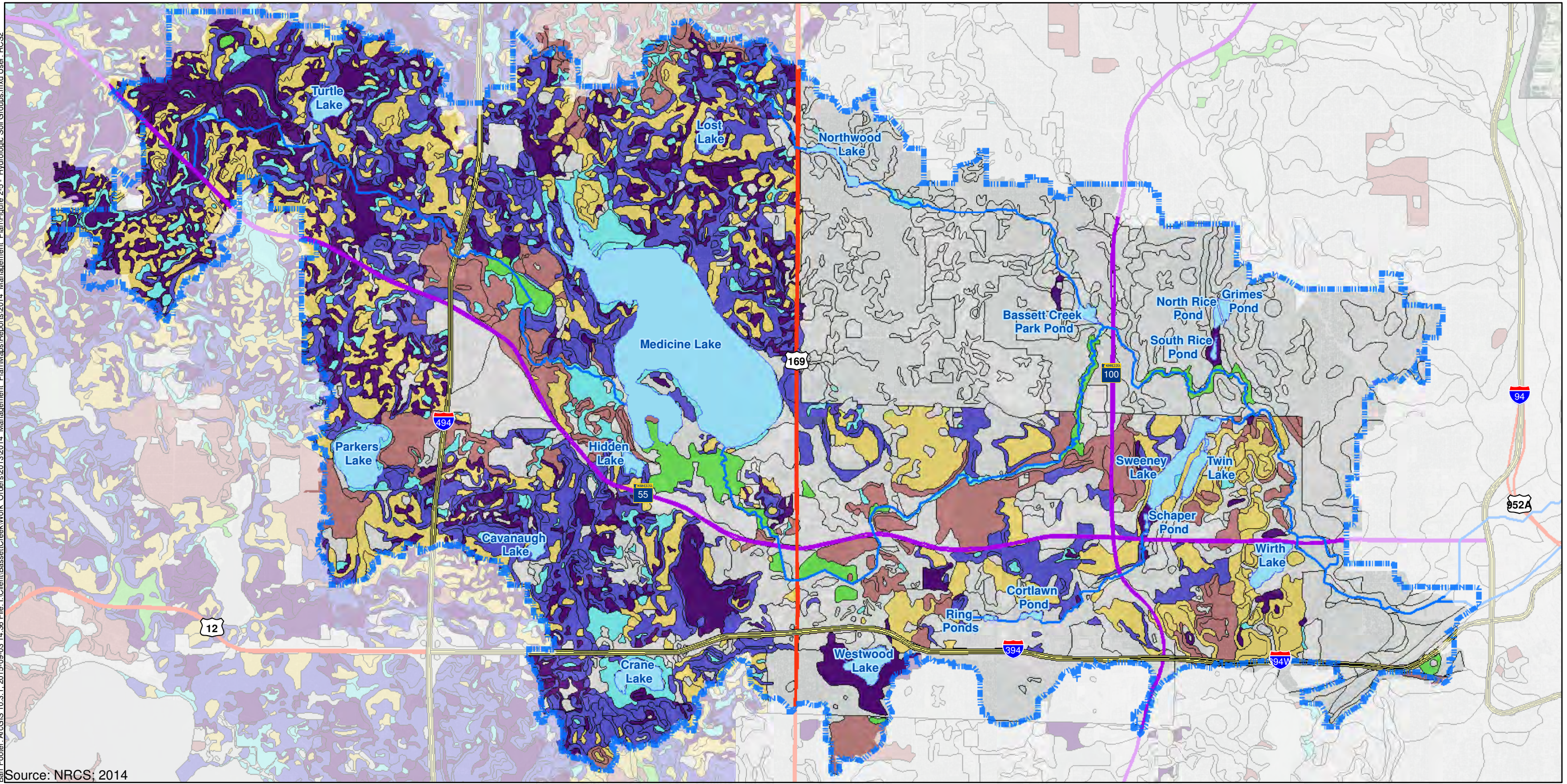


Figure 2-4

TOPOGRAPHY
Bassett Creek Watershed
Management Commission
2015 Management Plan

Barr Footer: ArcGIS 10.3.1, 2015-09-03 14:35 File: I:\Client\BassettCreek\Work_Orders\2013\2014_Management_Plan\Map\Reports\2014_Management_Plan\Figure 2-4_Topography and Steep Slopes.mxd User: RCSP

Barr Footer: ArcGIS 10.3.1, 2015-09-03 14:36 File: I:\Client\BassettCreek\Work_Orders\2013\2014 Management Plan\Maps\Reports\2014 Management Plan\Figure 2-5 - Hydrologic Soil Groups.mxd User: RCSP



Source: NRCS; 2014

BCWMC Jurisdictional Boundary
 [Dashed blue line symbol]

Creeks
 [Blue line symbol]

Hydrologic Soil Groups

[Brown symbol]	A	High Permeability ↑ ↓ Low Permeability
[Green symbol]	A/D	
[Dark blue symbol]	B	
[Light blue symbol]	B/D	
[Yellow symbol]	C	
[Purple symbol]	C/D	
[Grey symbol]	Not rated or not available	

See section 2.4.1 of the plan for more information on hydrologic soil groups.

N

Feet

4,000 0 4,000

Figure 2-5

HYDROLOGIC SOIL GROUPS
 Bassett Creek Watershed
 Management Commission
 2015 Management Plan

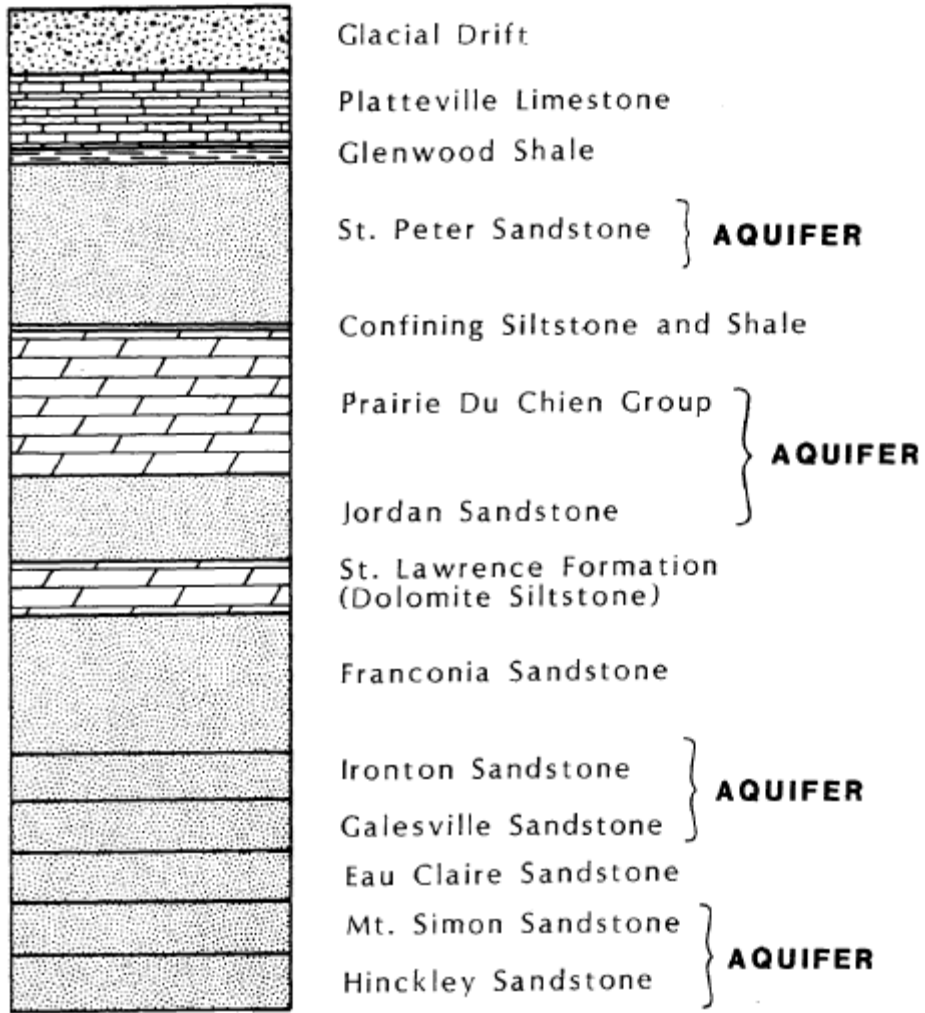
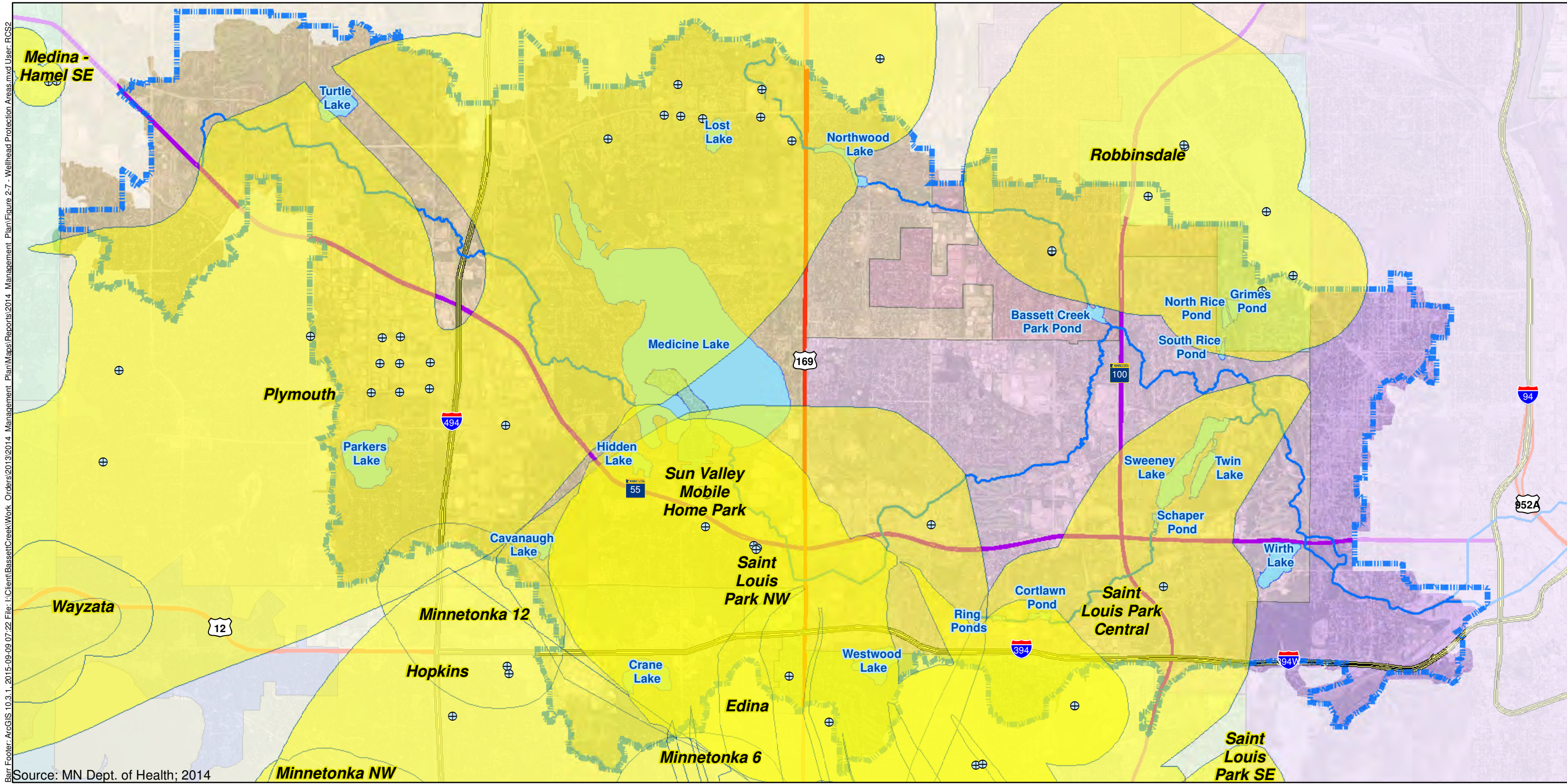






Figure 2-6
Generalized Geologic Section

Bar: Footer: ArcGIS 10.3.1_2015-09-09 07:22 File: I:\Client\BassettCreek\Work_Orders\2013\2014_Management_Plan\Map\Protection_Areas.mxd User: RCS2



Source: MN Dept. of Health; 2014

-  BCWMC Jurisdictional Boundary
-  Creeks
-  Wellhead Protection Area (WHPA)
-  Municipal Wells

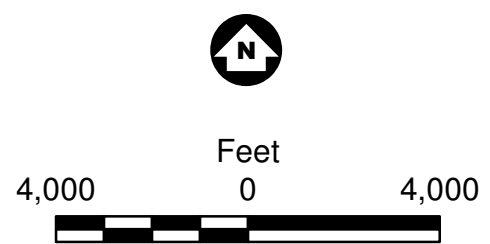
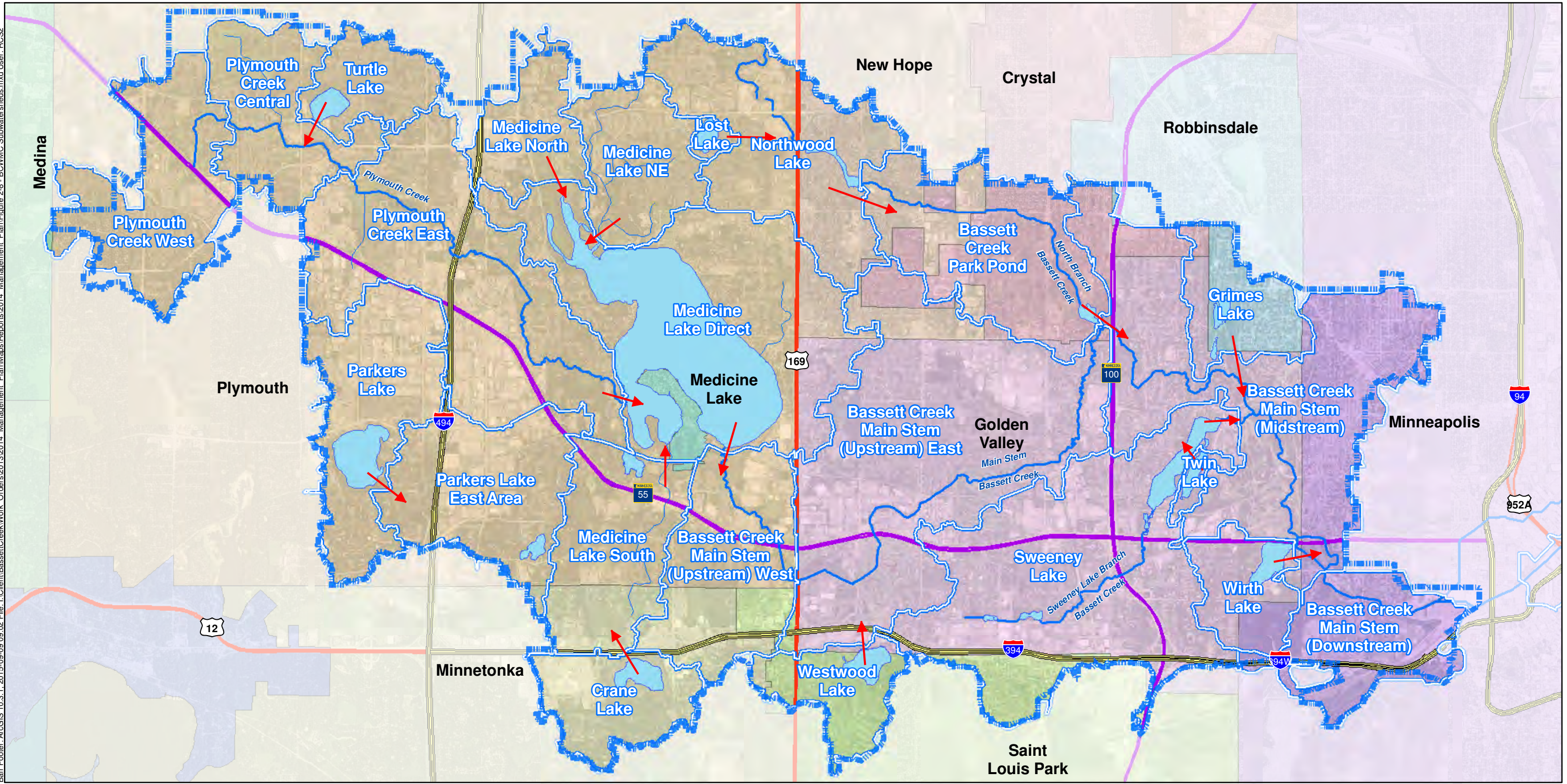


Figure 2-7

WELLHEAD PROTECTION AREAS
 Bassett Creek Watershed
 Management Commission
 2015 Management Plan



Barr Footer: ArcGIS 10.3.1, 2015-09-09 09:02 File: I:\Client\BassettCreek\Work_Orders\2013\2014_Management_Plan\Maps\Reports\2014_Management_Plan\Figure 2-8_BCWMC_Subwatersheds.mxd User: RCS2



- BCWMC Jurisdictional Boundary
- Major Subwatersheds
- Lakes and Ponds
- BCWMC Priority Streams
- Other Streams
- Flow Directions

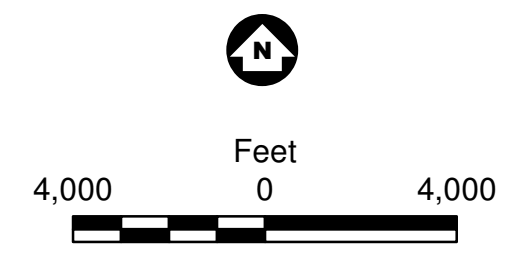
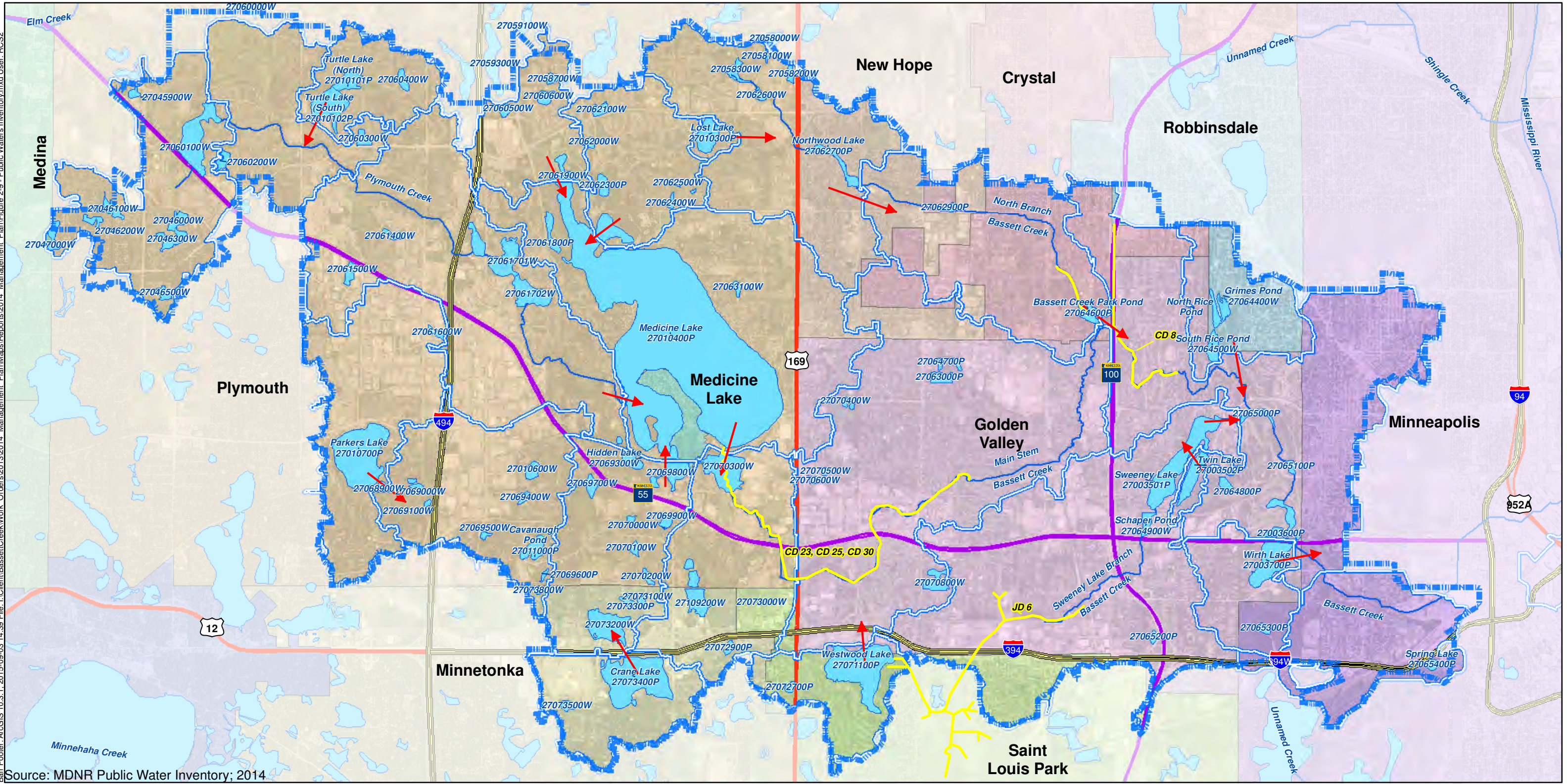


Figure 2-8

BCWMC MAJOR SUBWATERSHEDS AND DRAINAGE PATTERNS
 Bassett Creek Watershed Management Commission
 2015 Management Plan



Barr Footer: ArcGIS 10.3.1, 2015-09-03 14:39 File: I:\Client\BassettCreek\Work_Orders\2013\2014_Management_Plan\Map\Inventory\Inventory.mxd User: RCSE



Source: MDNR Public Water Inventory; 2014

-  BCWMC Jurisdictional Boundary
-  Major Subwatersheds
-  Flow Directions
-  Public Water Inventory Basins
-  Public Water Inventory Watercourses
-  Public Ditches

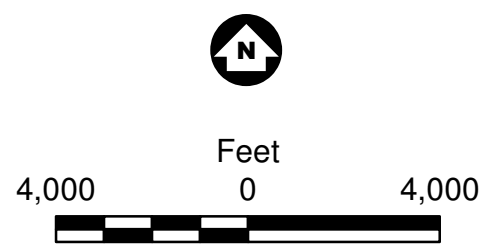


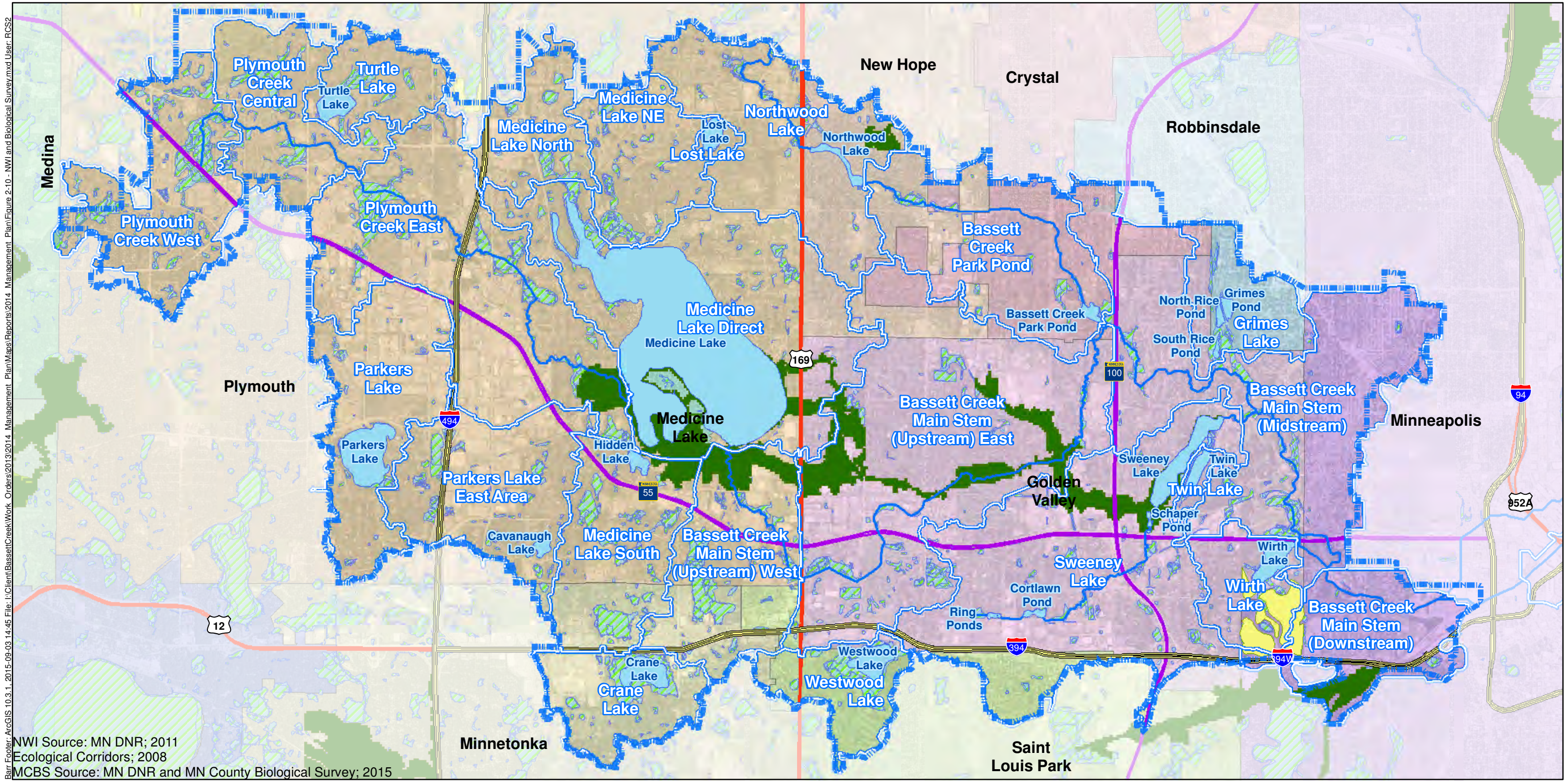
Figure 2-9

PUBLIC WATERS INVENTORY
 AND PUBLIC DITCHES
 Bassett Creek Watershed
 Management Commission
 2015 Management Plan



Barr, Ecojour: ArcGIS 10.3.1, 2015-09-03 14:45 File: I:\Client\BassettCreek\Work_Orders\2013\2014_Management_Plan\Maps\Reports\2014_Management_Plan\Figure 2-10 - NWI and Biological Survey.mxd User: RCS2

NWI Source: MN DNR; 2011
 Ecological Corridors; 2008
 MCBS Source: MN DNR and MN County Biological Survey; 2015



- | | |
|--|--|
| | Sites of Biodiversity Significance (MCBS) |
| | Outstanding |
| | High |
| | Moderate |
| | Below |

See section 2.6.3 and section 2.9 of the plan for more information about the data presented in this figure.

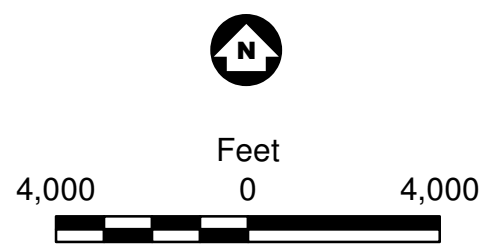
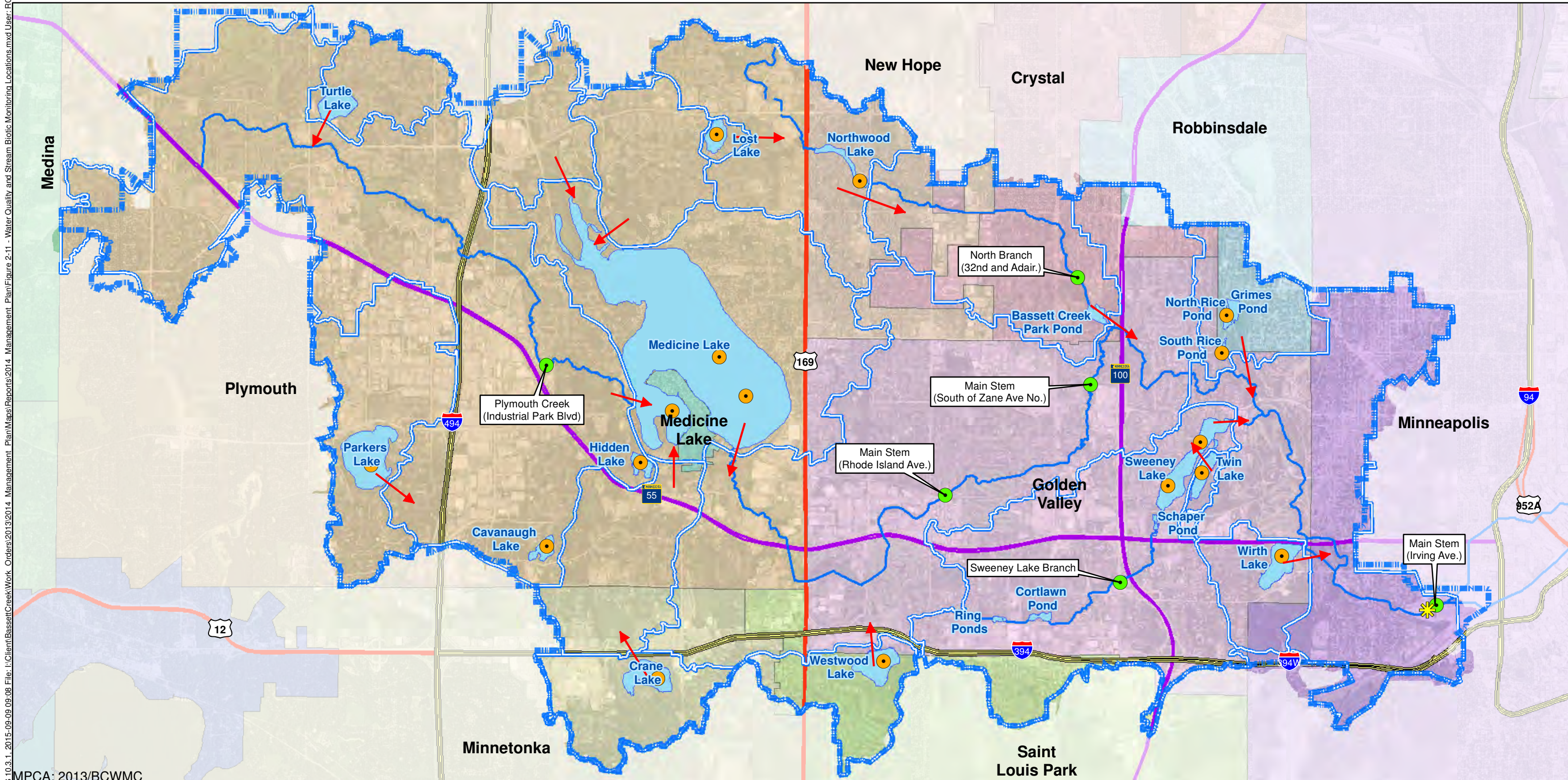


Figure 2-10

NATIONAL WETLAND INVENTORY
 AND BIOLOGICAL SURVEY
 Bassett Creek Watershed
 Management Commission
 2015 Management Plan

Barr Footer: ArcGIS 10.3.1, 2015-09-09 09:08 File: I:\Client\BassettCreek\Work Orders\2013\2014 Management Plan\Maps\Reports\2014 Management Plan\Figure 2-11 - Water Quality and Stream Biotic Monitoring Locations.mxd User: BCSS



MPCA; 2013/BCWMC

- BCWMC Jurisdictional Boundary
- Major Subwatersheds
- Flow Directions
- Creeks
- Chemical Water Quality Monitoring Station (BCWMC or Citizen Assisted Monitoring Program)
- Biotic Monitoring Locations (BCWMC)
- Watershed Outlet Monitoring Program (WOMP) Station

See section 2.7.1 of the plan for more information regarding the monitoring programs and locations illustrated in this figure.

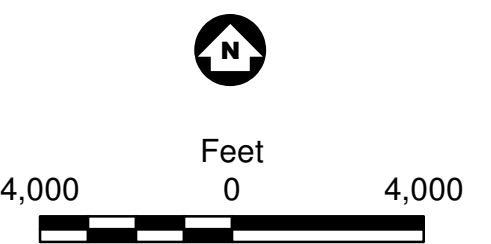
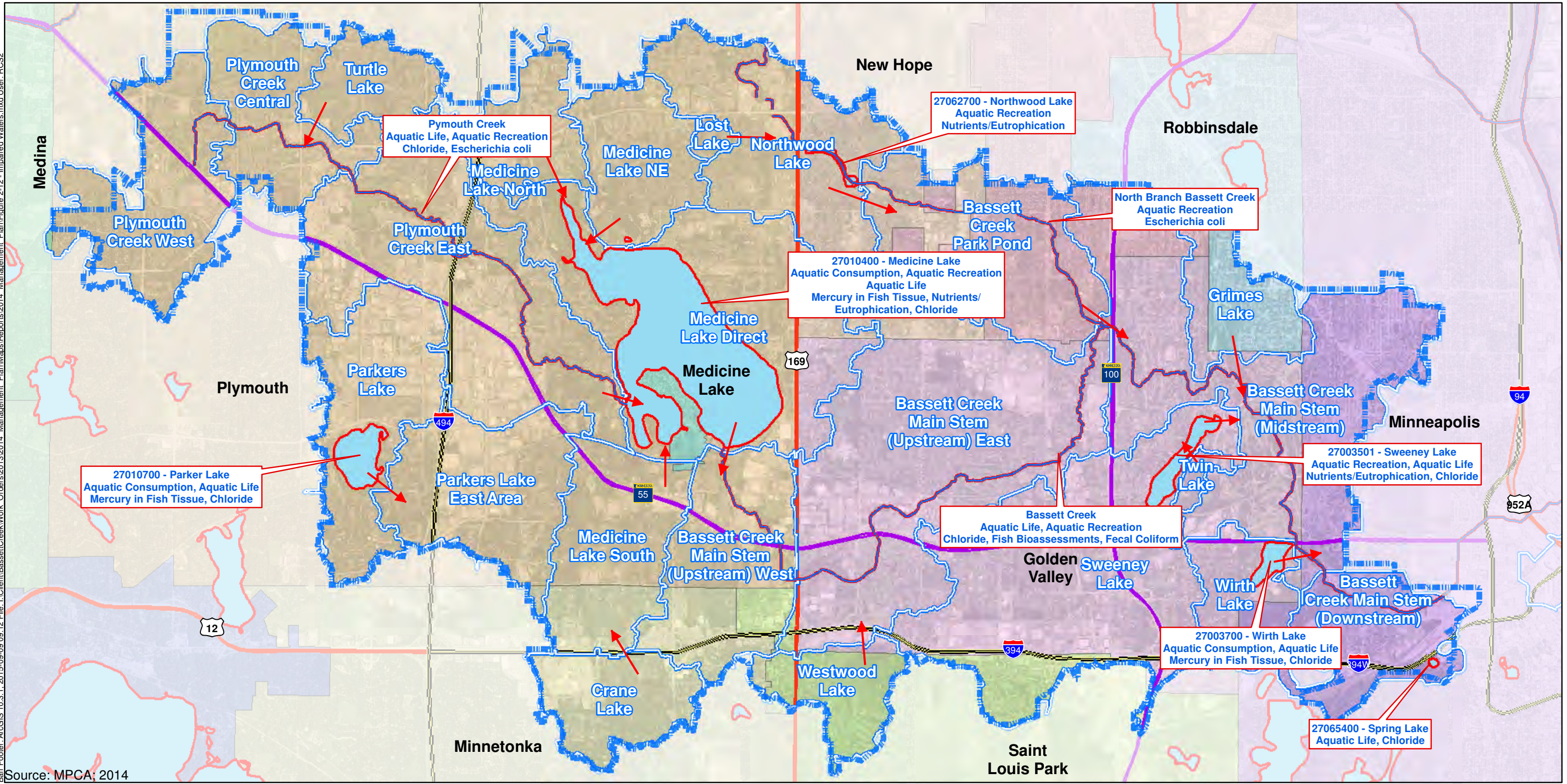


Figure 2-11

WATER QUALITY AND STREAM
 BIOTIC MONITORING LOCATIONS
 Bassett Creek Watershed
 Management Commission
 2015 Management Plan

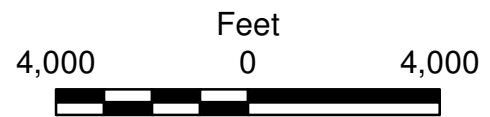
Bar: Footer: ArcGIS 10.3.1, 2015-09-09 09:12: File: I:\Client\BassettCreek\Work_Orders\2013\2014_Management_Plan\Map\BassettCreek\Work_Orders\2013\2014_Management_Plan\Figure 2-12 - Impaired Waters.mxd User: RGS2



Source: MPCA; 2014

- BCWMC Jurisdictional Boundary
- Major Subwatersheds
- Flow Directions
- Impaired Streams
- Impaired Lakes

North Branch Bassett Creek Aquatic Recreation Escherichia coli	← Name/Public Waters ID ← Impaired Uses ← Pollutant/Stressors
---	---



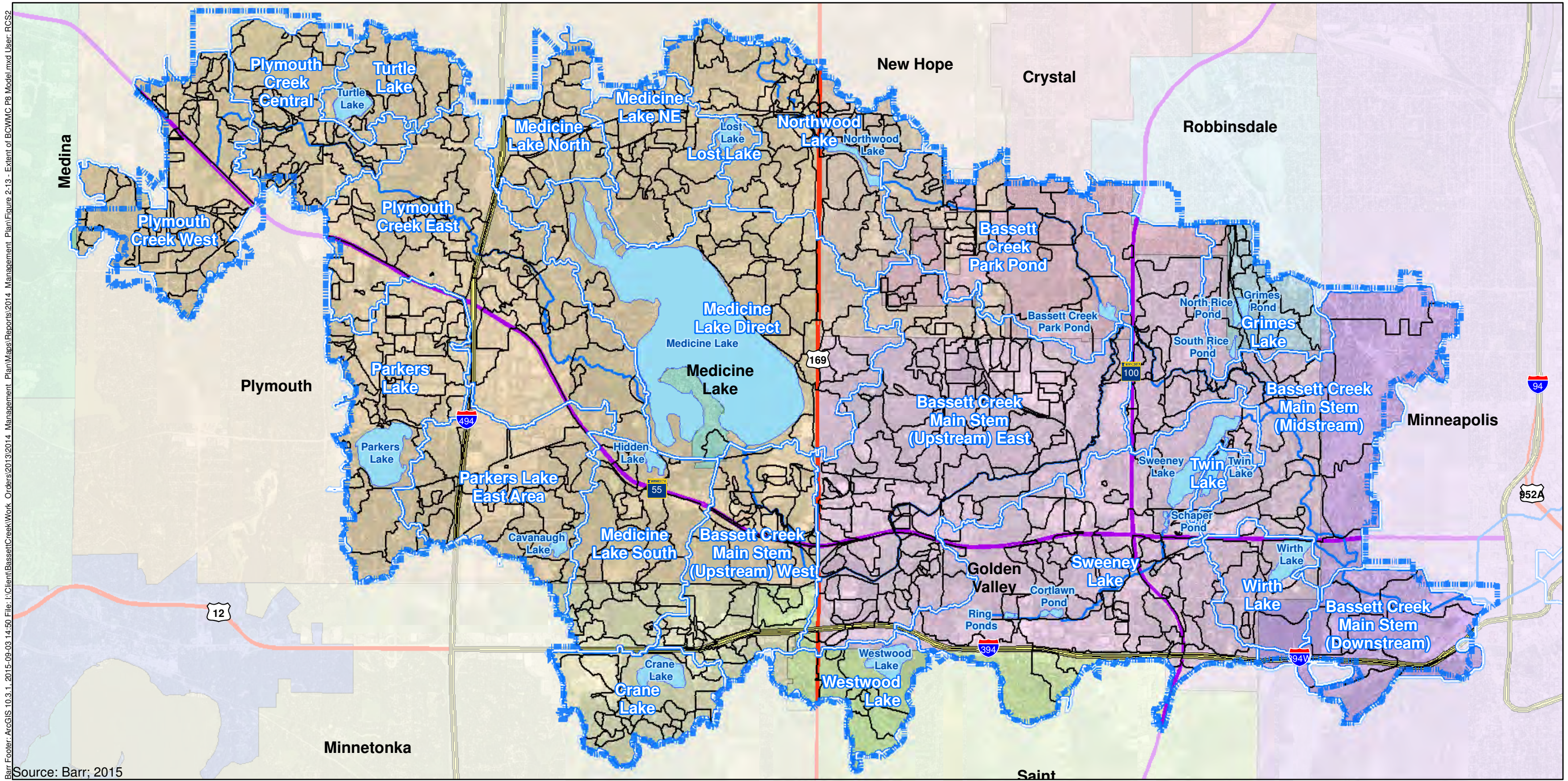
Data based on the 2014 MPCA 303(d) Impaired Water List. See section 2.7.2.1 of the plan for more information about impaired waters and the MPCA's 303(d) Impaired Waters List.

Figure 2-12






MPCA 303(d) IMPAIRED WATERS
 Bassett Creek Watershed
 Management Commission
 2015 Management Plan



Barr Footer: ArcGIS 10.3.1, 2015-09-03 14:50 File: I:\Client\BassettCreek\Work_Orders\2013\2014_Management_Plan\Maps\Reports\2014_Management_Plan\Figure 2-13_Extent of BCWMC P8 Model.mxd User: RCS2



Source: Barr, 2015

-  BCWMC Jurisdictional Boundary
-  Major Subwatersheds
-  Watersheds Used in P8 Model
-  Creeks
-  Lakes and Ponds

See section 2.7.3.1 for more information about the BCWMC watershed-wide P8 Water Quality Model.

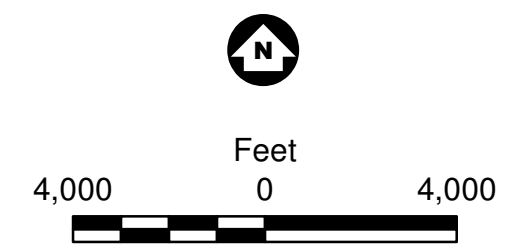
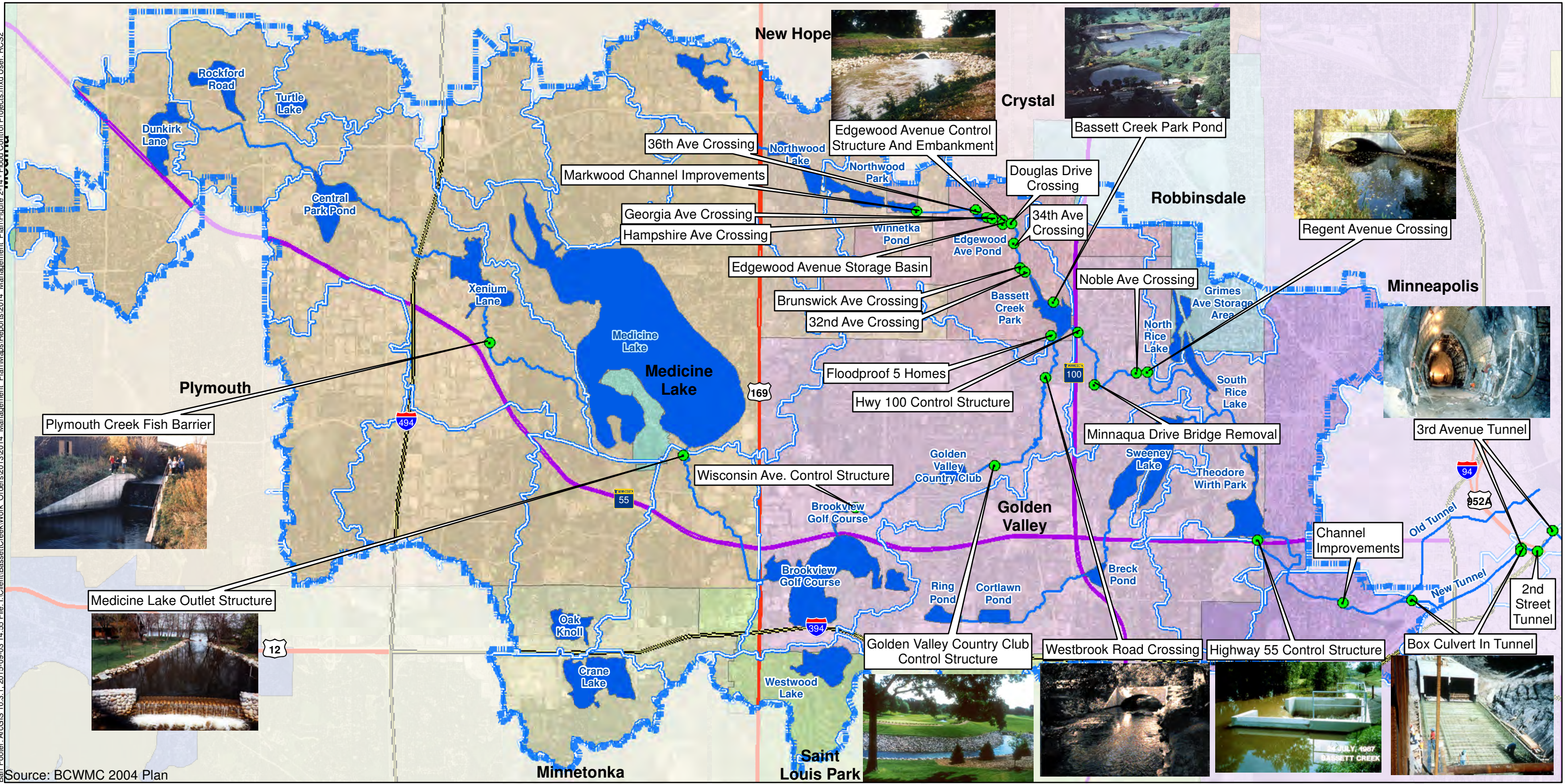


Figure 2-13

WATERSHEDS USED IN
BCWMC P8 MODEL
Bassett Creek Watershed
Management Commission
2015 Management Plan

Barr Footer: ArcGIS 10.3.1, 2015-09-03 14:55 File: I:\Client\BassettCreek\Work_Orders\2013\2014_Management_Plan\Map\BassettCreek\Projects.mxd User: RC92



Source: BCWMC 2004 Plan

- BCWMC Jurisdictional Boundary
- Major Subwatersheds
- Flood Control Projects
- Designated Water Quantity and Water Quality Storage Facilities (From Fig. 15 of 2004 Plan)

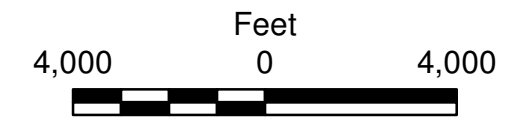
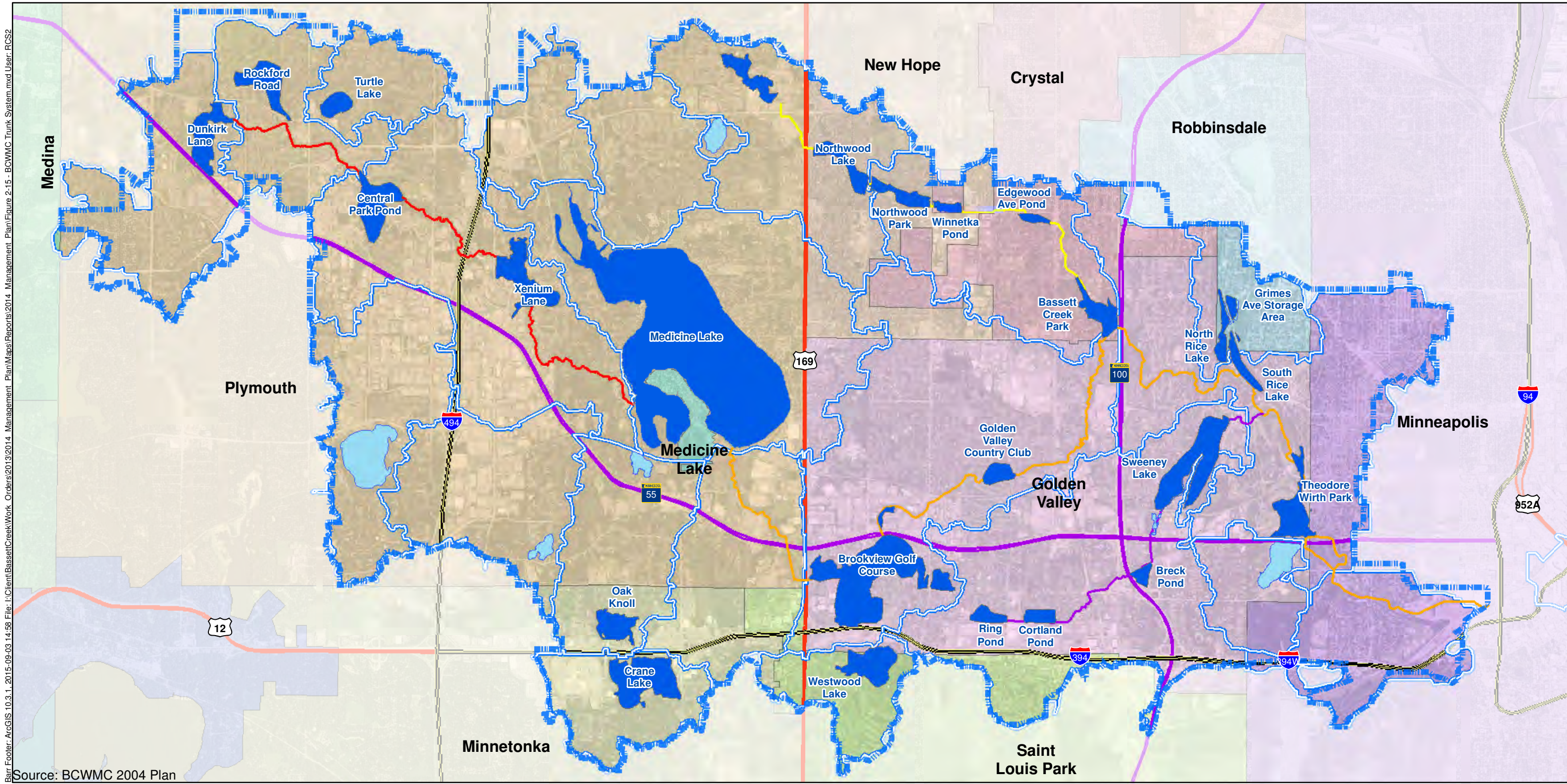


Figure 2-14

FLOOD CONTROL PROJECT FEATURES
 Bassett Creek Watershed Management Commission
 2015 Management Plan

Barr Footer: ArcGIS 10.3.1, 2015-09-03 14:58 File: I:\Client\BassettCreek\Work_Orders\2013\2014_Management_Plan\Map\BassettCreek\Work_Orders\2013\2014_Management_Plan\Figure 2-15 - BCWMC Trunk System.mxd User: RCS2



Source: BCWMC 2004 Plan

- BCWMC Jurisdictional Boundary
- Major Subwatersheds
- Trunk System Components**
- Main Stem Bassett Creek
- North Branch Bassett
- Plymouth Creek
- Sweeney Branch Bassett Creek
- Designated Water Quantity and Water Quality Storage Facilities (From Fig. 15 of 2004 Plan)

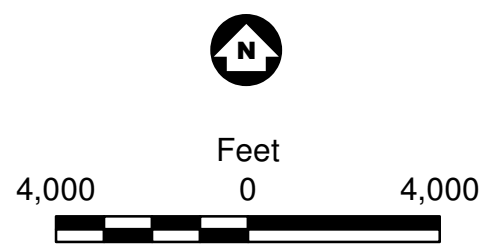
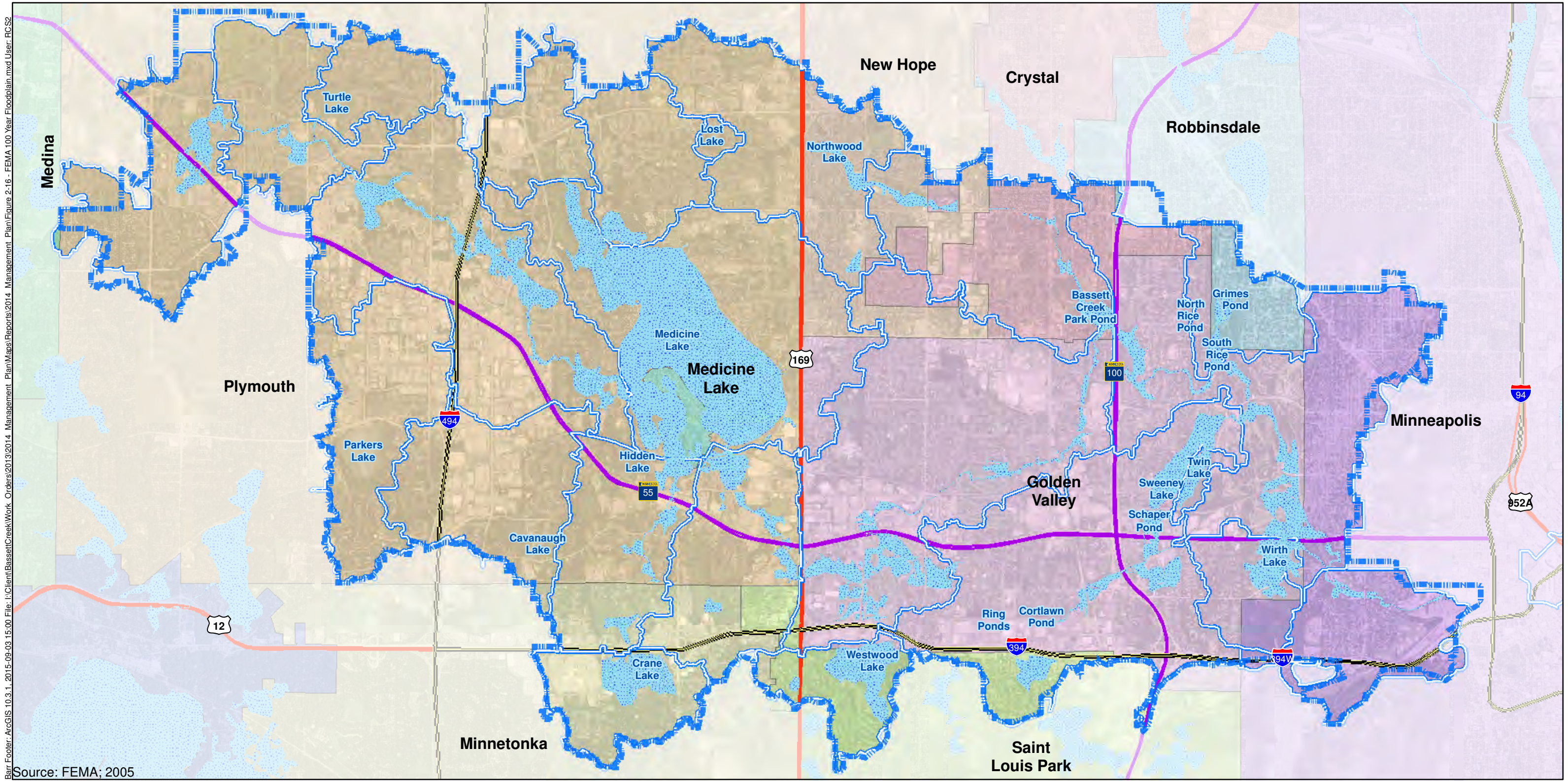


Figure 2-15




BCWMC TRUNK SYSTEM
Bassett Creek Watershed
Management Commission
2015 Management Plan



Bar: Footer: ArcGIS 10.3.1_2015-09-03 15:00 File: I:\Client\BassettCreek\Work_Orders\2013\2014_Management_Plan\Maps\Reports\2014_Management_Plan\Figure 2-16_FEMA 100 Year Floodplain.mxd User: RC52



Source: FEMA; 2005

-  BCWMC Jurisdictional Boundary
-  Major Subwatersheds
-  FEMA 100 Year Floodplain

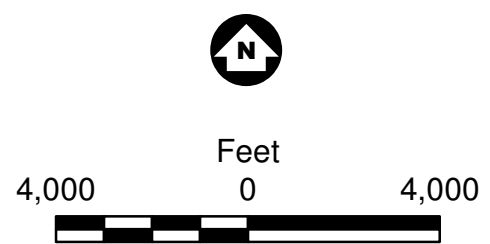


Figure 2-16

FEMA 100-YEAR FLOODPLAIN
Bassett Creek Watershed
Management Commission
2015 Management Plan



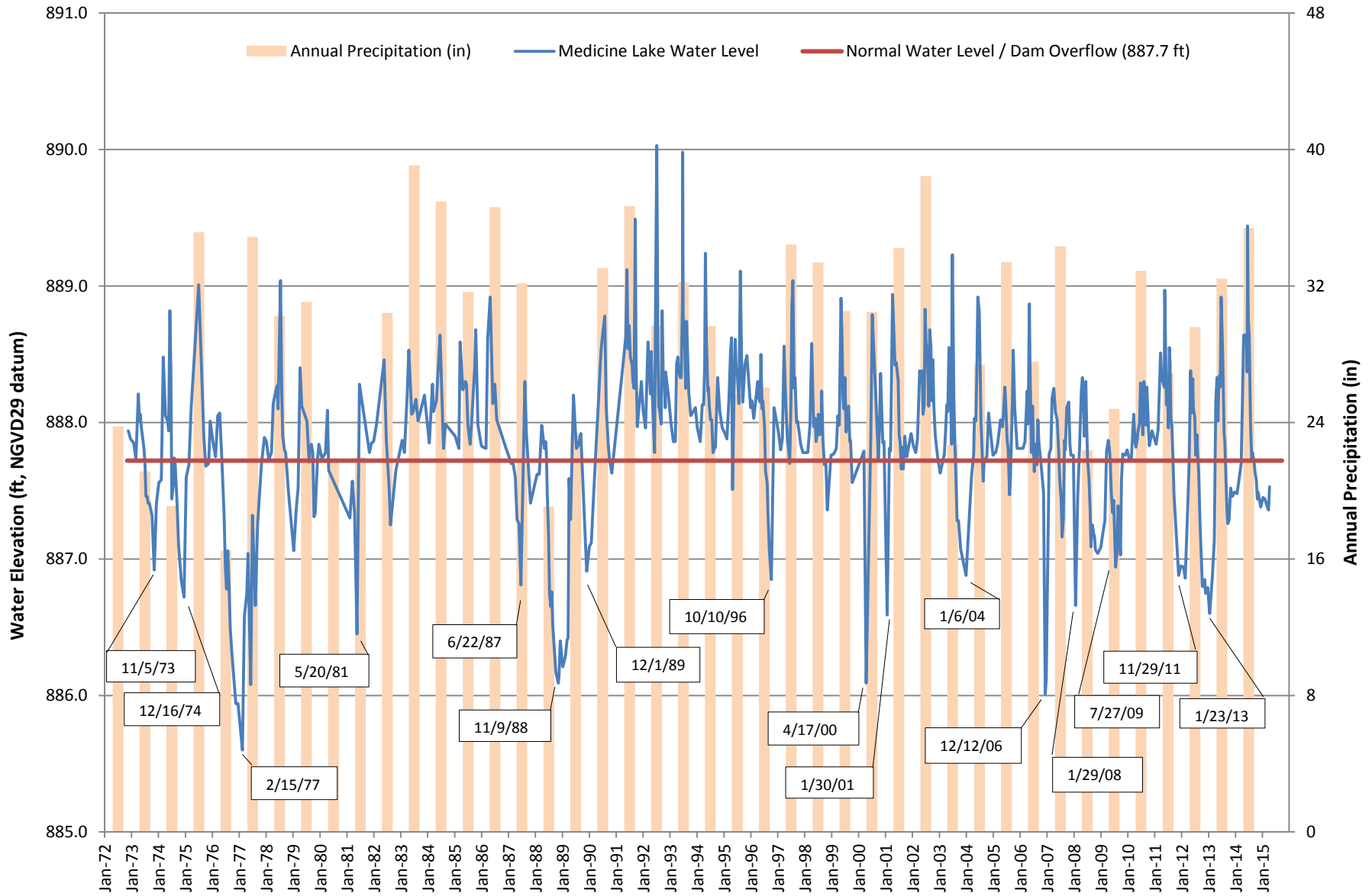
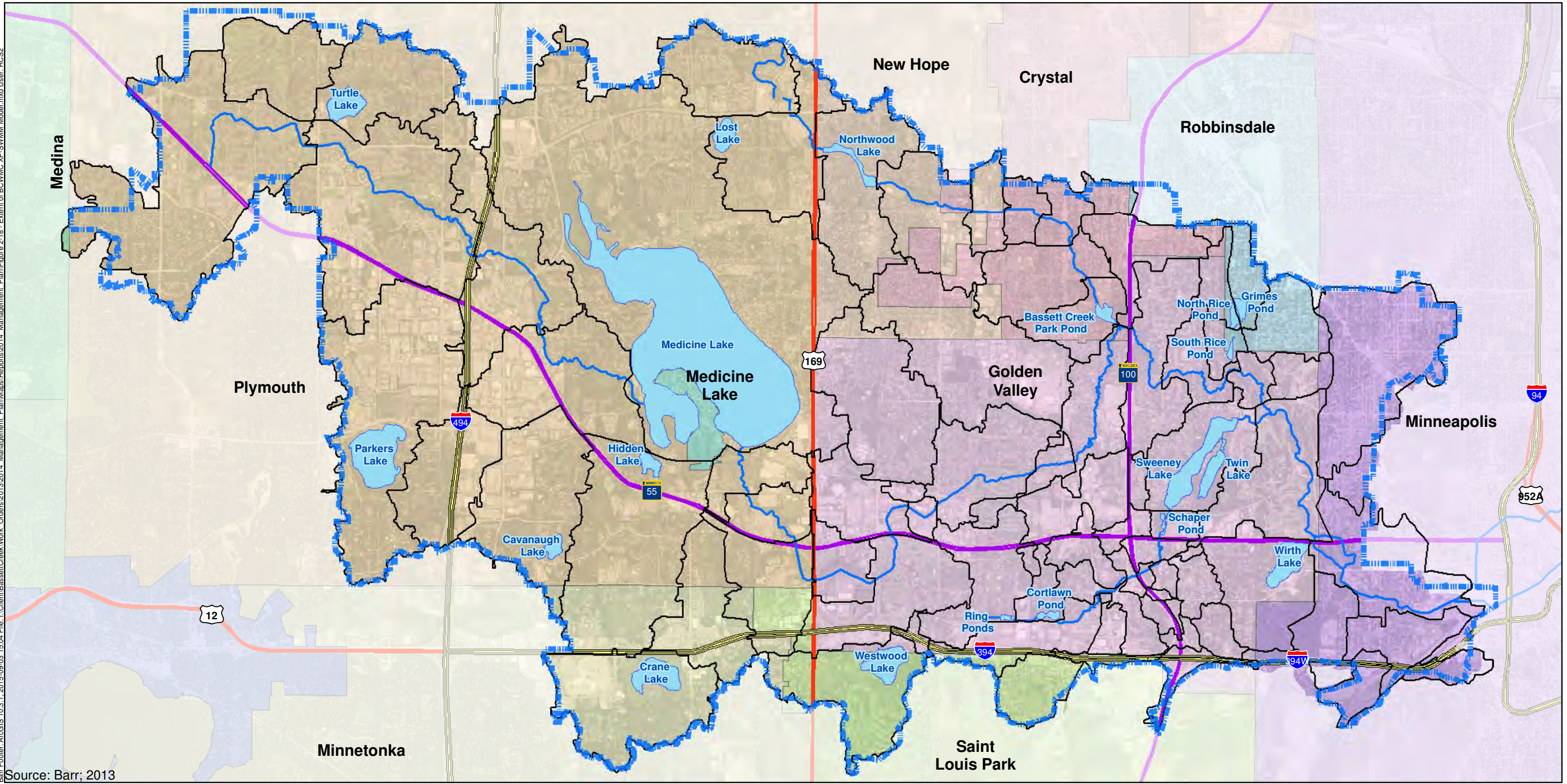


Figure 2-17
Medicine Lake Water Level and
Precipitation (1972-2015)

Sources: MDNR lakefinder, Minnesota Climatology Working Group, BCWMC

Barr Footer-ArcGIS 10.3.1_2015-09-03 15:04 File: I:\Client\BassettCreek\Work_Orders\2013\2014_Management_Plan\Map\Reports\2014_Management_Plan\Figure 2-18 - Extent of BCWMC XP-SWMM Model.mxd User: RCSS



Source: Barr; 2013

- BCWMC Jurisdictional Boundary
- Watersheds Used in XP-SWMM Model
- Creeks
- Lakes and Ponds

See section 2.8.6.1 for more information about the BCWMC watershed-wide XP-SWMM hydrologic and hydraulic model.

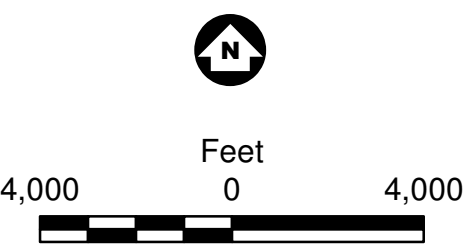
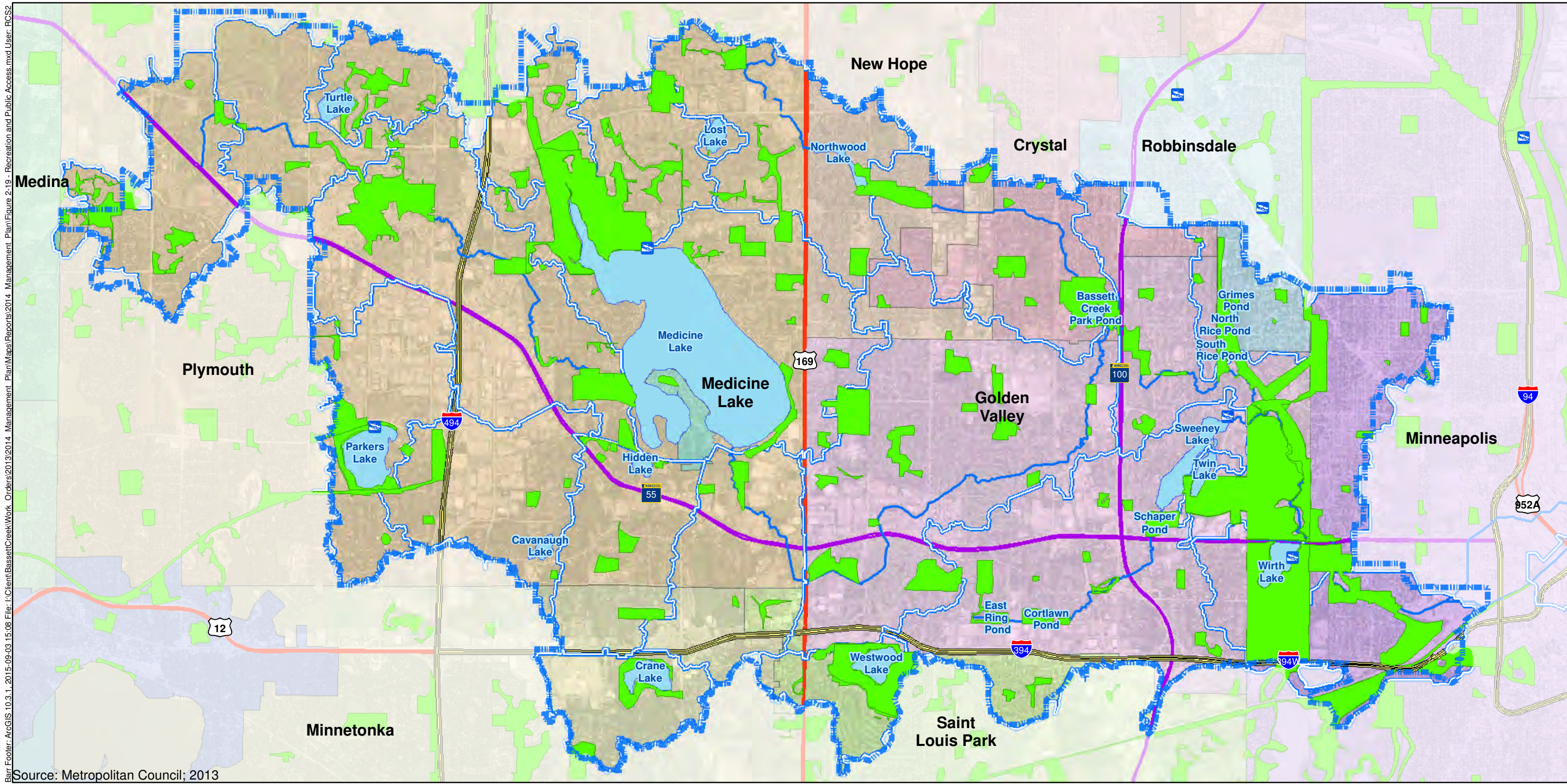







Figure 2-18

WATERSHEDS USED IN BCWMC XP-SWMM MODEL
Bassett Creek Watershed Management Commission
2015 Management Plan



Barr Footer: ArcGIS 10.3.1, 2015-09-03 15:08 File: I:\Client\BassettCreek\Work_Orders\2013\2014 Management Plan\Maps\Reports\2014 Management Plan\Figure 2-19 - Recreation and Public Access.mxd User: RCSS2

Source: Metropolitan Council; 2013

-  BCWMC Jurisdictional Boundary
-  Major Subwatersheds
-  Boat Access
-  Creeks
-  City or Regional Park

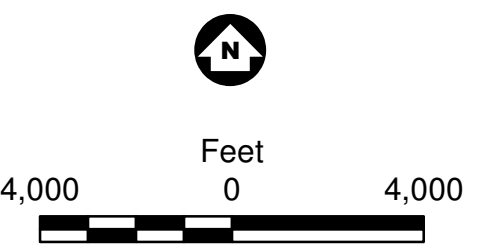
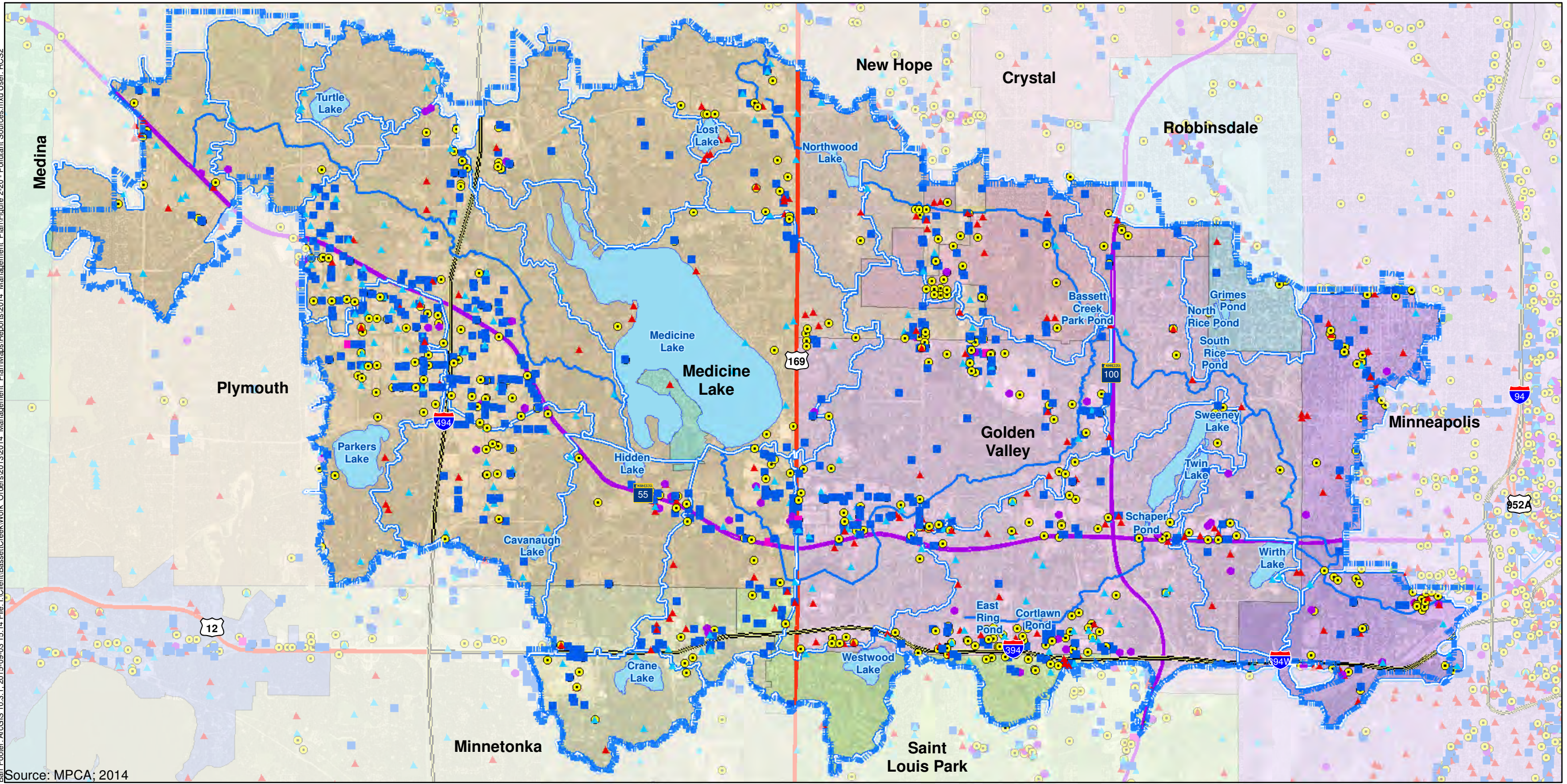


Figure 2-19

RECREATION AREAS AND
PUBLIC BOAT ACCESS
Bassett Creek Watershed
Management Commission
2015 Management Plan

Barr Footer: ArcGIS 10.3.1_2015-09-03 15:14 File: I:\Client\BassettCreek\Work_Orders\2013\2014_Management_Plan\Map\Sources\mxd\User: RCSP



Source: MPCA; 2014

- What's in my Neighborhood (MPCA)**
- BCWMC Jurisdictional Boundary
 - Major Subwatersheds
 - Lakes and Ponds
 - Creeks
 - Air Permit
 - Feedlot
 - Hazardous Waste
 - Investigation and Cleanup
 - Solid Waste
 - Underground Storage Tanks
 - Water Quality
 - Multiple Activities

See section 2.11 of the plan for more information about the data illustrated in this figure.

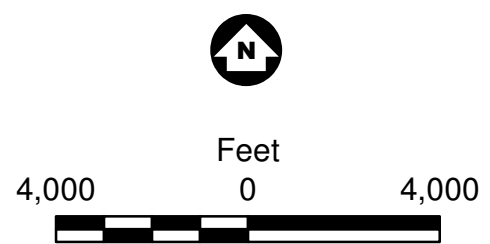


Figure 2-20

POLLUTANT SOURCES
 Bassett Creek Watershed
 Management Commission
 2015 Management Plan