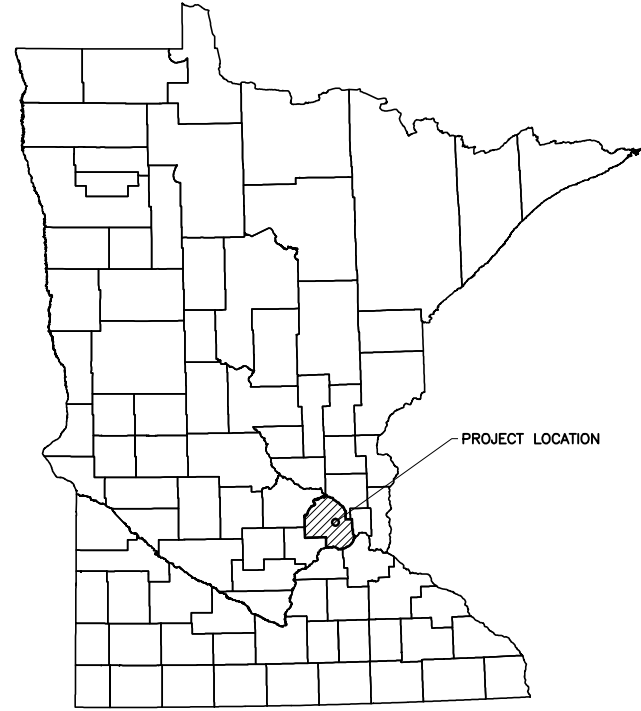
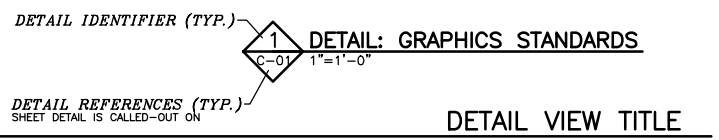
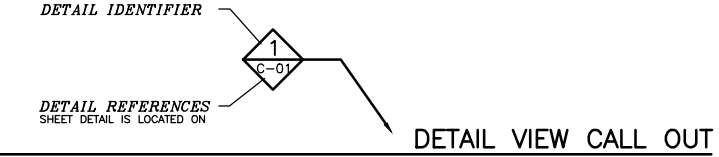
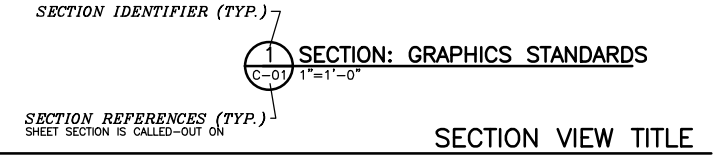
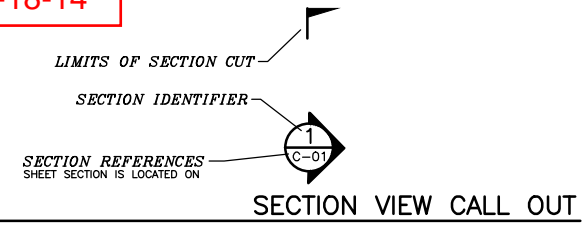


**SURVEY DATUM**  
HENNEPIN COUNTY COORDINATE SYSTEM,  
NAD 83, NGVD 29

**Item 5C.**  
**BCWMC 12-18-14**

# CITY OF GOLDEN VALLEY SCHAPER POND IMPROVEMENTS GOLDEN VALLEY, MN



**LOCATION MAP**  
NOT TO SCALE

**LEGEND**

- BOREHOLE LOCATION
- BENCHMARK
- LIGHT POLE
- POWER POLE
- GUY WIRE
- SANITARY MANHOLE
- STORM MANHOLE
- WATER SURFACE
- EDGE OF WATER
- TREE
- SANITARY SEWER
- STORM SEWER
- OVERHEAD ELECTRIC
- UNDERGROUND GAS LINE
- UNDERGROUND TELECOMMUNICATIONS
- TRAIL
- ROAD
- 890 EXISTING CONTOURS
- EASEMENT/LOT LINE
- CONSTRUCTION LIMITS
- STRUCTURE CENTERLINE
- EXISTING STRUCTURES
- LIMITS OF RIPRAP

**ABBREVIATIONS**

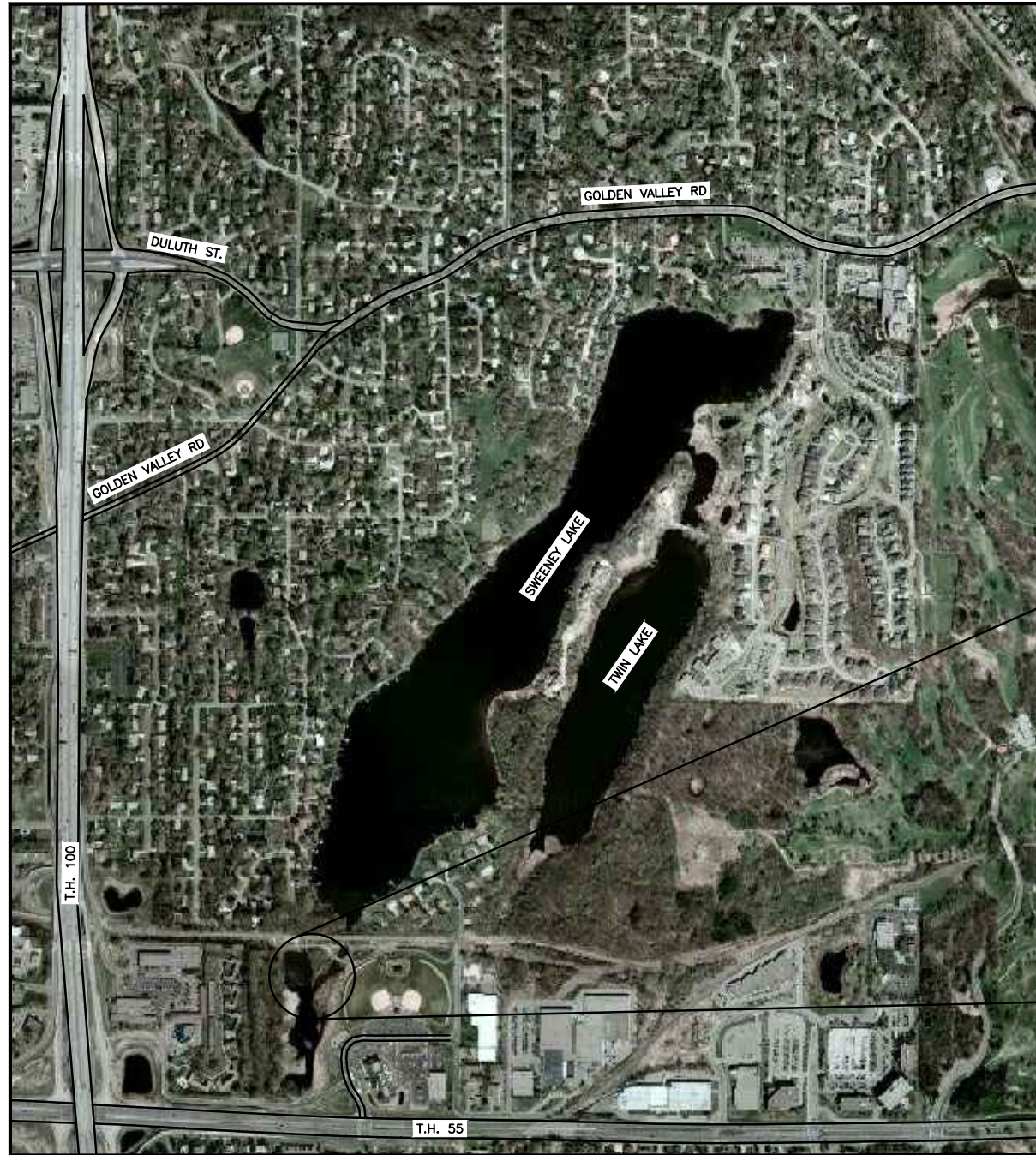
- APPROX. APPROXIMATE
- C.C.C. CLEAR CONCRETE COVER
- C.L. CENTERLINE
- E.F. EACH FACE
- EL. ELEVATION
- E.W. EACH WAY
- EX. EXISTING
- FT. FEET
- MAX. MAXIMUM
- MIN. MINIMUM
- N.W. NORMAL POOL
- O.C. ON CENTER
- T.O.C. TOP OF CONCRETE
- T.O.S. TOP OF STEEL
- TYP. TYPICAL
- T&B TOP AND BOTTOM
- UNO UNLESS NOTED OTHERWISE

**NOTES:**

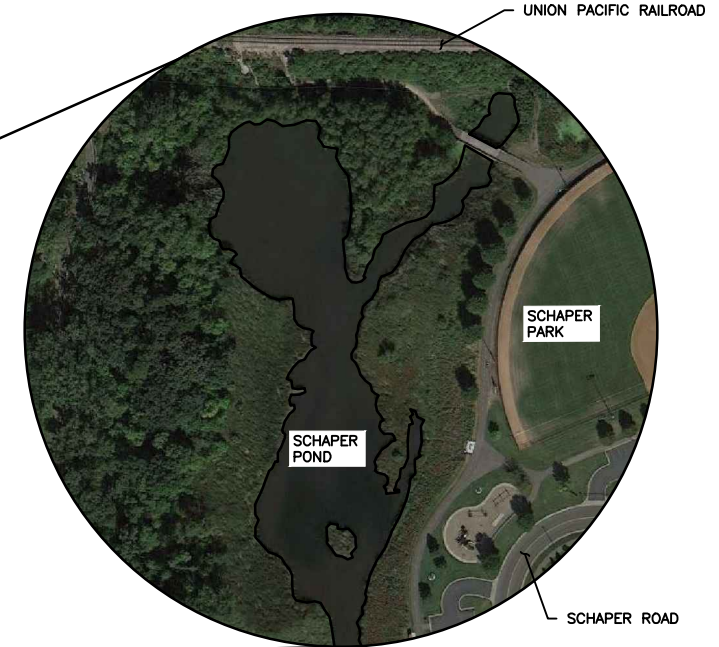
- THE SUBSURFACE UTILITY INFORMATION IN THIS PLAN IS QUALITY LEVEL D. THIS UTILITY QUALITY LEVEL WAS DETERMINED ACCORDING TO THE GUIDELINES OF CI/ASCE 38-02, ENTITLED STANDARD FOR THE COLLECTION AND DEPICTION OF EXISTING SUBSURFACE UTILITY DATA.
- THE LOCATIONS OF EXISTING UNDERGROUND UTILITIES ARE SHOWN IN AN APPROXIMATE WAY ONLY AND HAVE NOT BEEN INDEPENDENTLY VERIFIED BY THE OWNER OR IT'S REPRESENTATIVE. THE CONTRACTOR SHALL DETERMINE THE EXACT LOCATION OF ALL EXISTING UTILITIES BEFORE COMMENCING WORK, AND AGREES TO BE FULLY RESPONSIBLE FOR ANY AND ALL DAMAGES WHICH MIGHT BE OCCASIONED BY THE CONTRACTOR'S FAILURE TO EXACTLY LOCATE AND PRESERVE ANY AND ALL UNDERGROUND UTILITIES.

**WARNING**

LOCATION OF UNDERGROUND UTILITIES TO BE VERIFIED BY CONTRACTOR GOPHER STATE ONE CALL CALL BEFORE DIGGING, 1-800-252-1166 REQUIRED BY LAW



**VICINITY MAP**  
NOT TO SCALE



**SHEET INDEX**

SHEET NO.	TITLE
C-01	TITLE SHEET, INDEX, AND SITE LOCATION MAP
C-02	SITE PLAN AND EROSION CONTROL PLAN
C-03	PROPOSED CONDITIONS
C-04	WATER BAFFLE PROFILE
C-05	WATER BAFFLE DETAILS
C-06	DEBRIS REMOVAL AREA DETAILS
D-01	DETAILS

**50% PRELIMINARY DRAFT**  
12/3/2014

CADD USER: Mike R. Hoefs FILE: O:\DESIGN\23271399\00\2327139900\_C-01.DWG PLOT SCALE: 1:2 PLOT DATE: 12/4/2014 4:08 PM

NO.	BY	CHK.	APP.	DATE	REVISION DESCRIPTION
B	MRH3	KLC	MRH3	12/5/14	ISSUED FOR COMMISSION REVIEW
A	MRH3	KLC	MRH3	12/3/14	ISSUED FOR CLIENT REVIEW

CLIENT	DATE
2/3/14	12/5/14

**BARR**  
Project Office:  
BARR ENGINEERING CO.  
4700 WEST 77TH STREET  
MINNEAPOLIS, MN.  
55435-4803  
Corporate Headquarters:  
Minneapolis, Minnesota  
Ph: 1-800-632-2277

Scale	AS SHOWN
Date	10/15/14
Drawn	MRH3
Checked	KLC
Designed	MRH3
Approved	MRH3



SCHAPER POND IMPROVEMENTS GOLDEN VALLEY, MN		BARR PROJECT No.
TITLE SHEET, INDEX, AND SITE LOCATION MAP		23271399.00
		CLIENT PROJECT No.
		13-28
DWG. No.	REV. No.	
C-01	B	



CADD USER: Mike R. Hoefs FILE: O:\DESIGN\232713990\2327139900\_C-02.DWG PLOT SCALE: 1:2 PLOT DATE: 12/4/2014 4:07 PM  
 Xrefs in Drawing - O:\Design\232713990\2327139900\_BASE\_EXISTING\_C30.dwg  
 WBS: O:\Design\232713990\2327139900\_C-02.dwg Plot: 01 12/04/2014 15:35:35



1 PLAN: SCHAPER POND OVERVIEW  
 SCALE IN FEET  
 0 60 120



2 PLAN: SCHAPER POND WORK AREA  
 SCALE IN FEET  
 0 30 60

NO.	BY	CHK.	APP.	DATE	REVISION DESCRIPTION
A	MRH3	KLC	MRH3	12/5/14	ISSUED FOR COMMISSION REVIEW
A	MRH3	KLC	MRH3	12/3/14	ISSUED FOR CLIENT REVIEW

I HEREBY CERTIFY THAT THIS PLAN, SPECIFICATION, OR REPORT WAS PREPARED BY ME OR UNDER MY DIRECT SUPERVISION AND THAT I AM A DULY LICENSED PROFESSIONAL ENGINEER UNDER THE LAWS OF THE STATE OF MINNESOTA.  
 PRINTED NAME: MICHAEL R. HOEFS  
 SIGNATURE: \_\_\_\_\_  
 DATE: \_\_\_\_\_ LICENSE # 47971

CLIENT	12/3/14	12/5/14					
BID							
CONSTRUCTION							
PERMITTING							
RECORD							
RELEASED TO/FOR	A	B	C	0	1	2	3
DATE RELEASED							

**BARR**  
 Project Office:  
 BARR ENGINEERING CO.  
 4700 WEST 77TH STREET  
 MINNEAPOLIS, MN.  
 55435-4803  
 Corporate Headquarters:  
 Minneapolis, Minnesota  
 Ph: 1-800-632-2277

Scale	AS SHOWN
Date	10/21/14
Drawn	MRH3
Checked	KLC
Designed	MRH3
Approved	MRH3



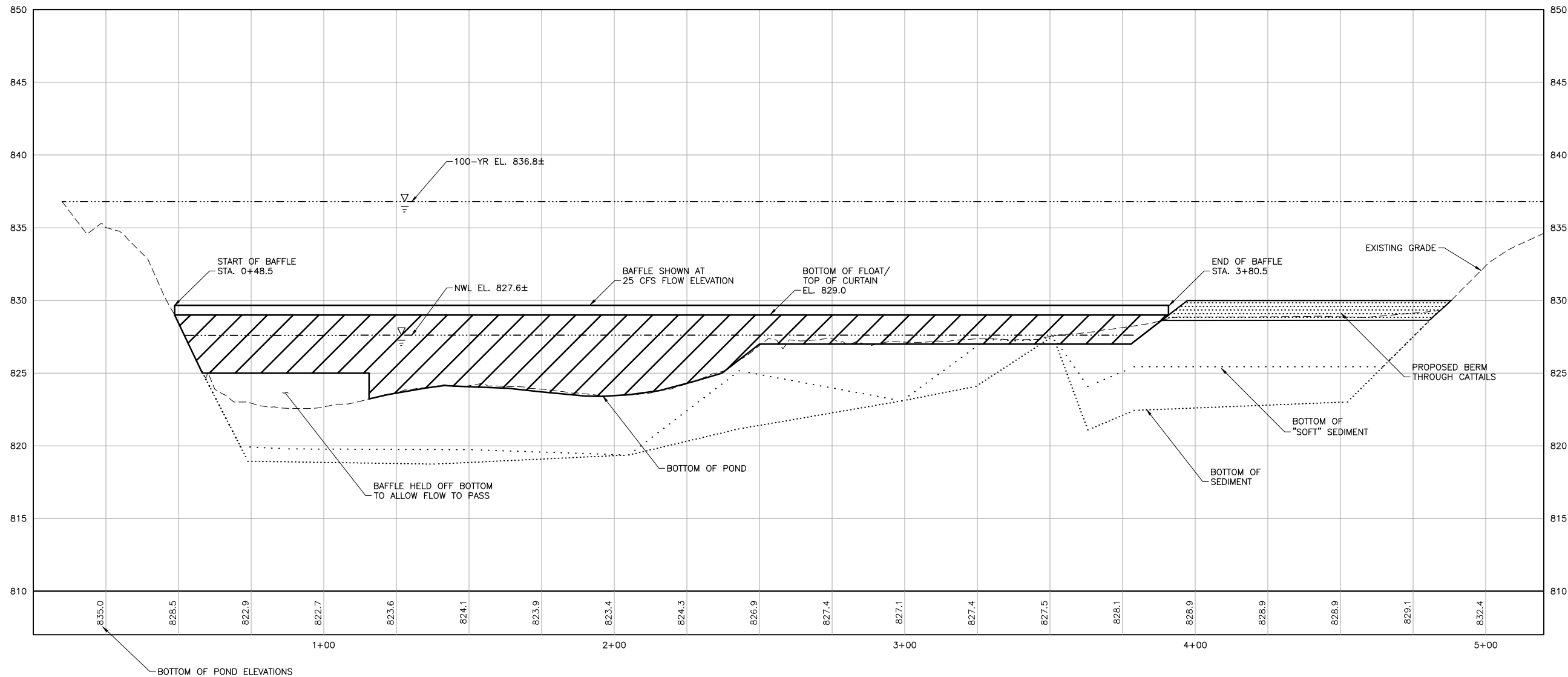
SCHAPER POND IMPROVEMENTS  
 GOLDEN VALLEY, MN  
 EXISTING CONDITIONS, EROSION CONTROL,  
 AND SITE USE PLAN

BARR PROJECT No.	23271399.00
CLIENT PROJECT No.	13-28
DWG. No.	C-02
REV. No.	B

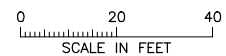
50%  
 PRELIMINARY DRAFT  
 12/5/2014







1 PROFILE: FLOATING WATER BAFFLE ALIGNMENT



5X VERTICAL EXAGGERATION

CADD USER: Mike R. Hoefs FILE: O:\DESIGN\2327139900\2327139900\_C-04.DWG PLOT SCALE: 1:2 PLOT DATE: 12/4/2014 3:49 PM  
 Xrefs\_in\_Drawing - O:\Design\2327139900\2327139900\_BASE\_EXISTING\_C30.dwg  
 MRH3 - O:\Design\2327139900\2327139900\_C-04.dwg Plot: 01.30 11/26/2014 18:45:35

50%  
PRELIMINARY DRAFT  
12/5/2014

NO.	BY	CHK.	APP.	DATE	REVISION DESCRIPTION
B	MRH3	KLC	MRH3	12/5/14	ISSUED FOR COMMISSION REVIEW
A	MRH3	KLC	MRH3	12/3/14	ISSUED FOR CLIENT REVIEW

I HEREBY CERTIFY THAT THIS PLAN, SPECIFICATION, OR REPORT WAS PREPARED BY ME OR UNDER MY DIRECT SUPERVISION AND THAT I AM A DULY LICENSED PROFESSIONAL ENGINEER UNDER THE LAWS OF THE STATE OF MINNESOTA.

SIGNATURE \_\_\_\_\_  
 PRINTED NAME MICHAEL R. HOEFS  
 DATE \_\_\_\_\_ REG. NO. 47971

CLIENT	12/3/12	12/5/14					
BID							
CONSTRUCTION							
PERMITTING							
RECORD							
RELEASED TO/FOR	A	B	C	0	1	2	3
DATE RELEASED							

**BARR** ENGINEERING CO.  
 4700 WEST 77TH STREET  
 MINNEAPOLIS, MN 55435

Project Office:  
 BARR ENGINEERING CO.  
 4700 WEST 77TH STREET  
 MINNEAPOLIS, MN 55435

Corporate Headquarters:  
 Minneapolis, Minnesota  
 Ph: 1-800-632-2277  
 Fax: (952) 832-2601  
 www.barr.com

Scale	AS SHOWN
Date	11/25/14
Drawn	MRH3
Checked	KLC
Designed	MRH3
Approved	MRH3

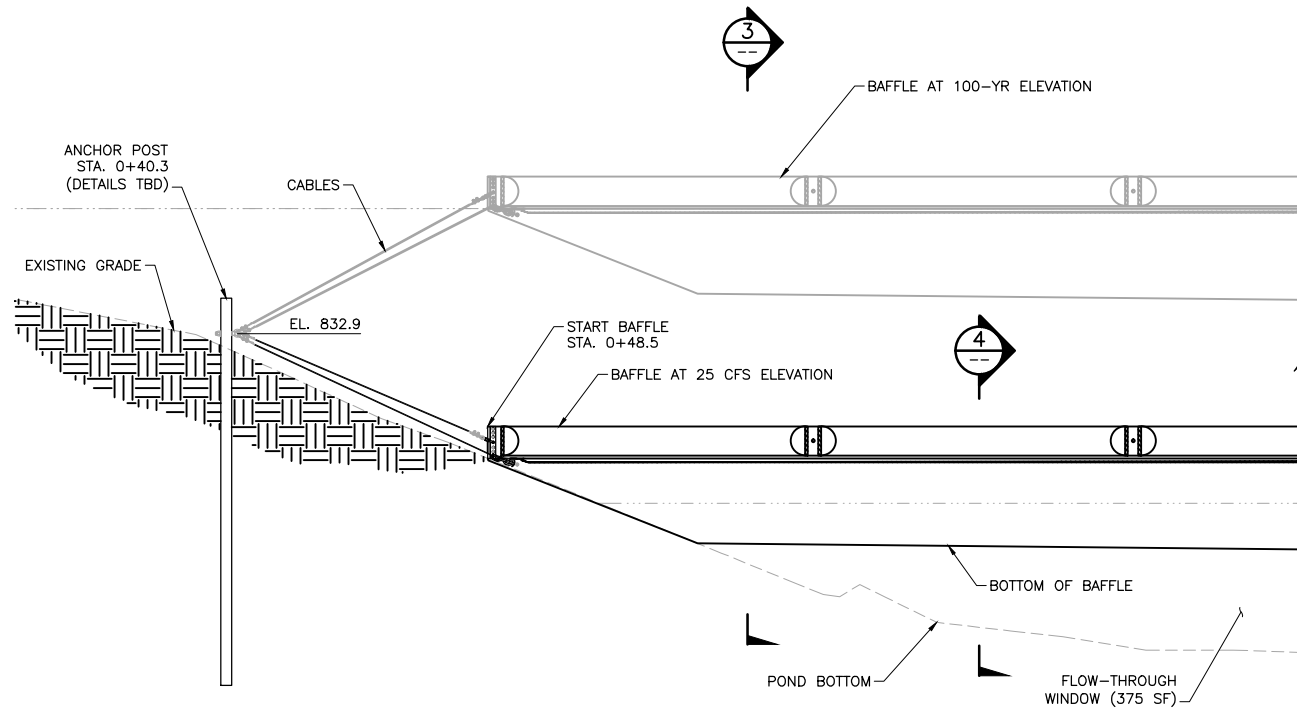


SCHAPER POND IMPROVEMENTS  
 GOLDEN VALLEY, MN

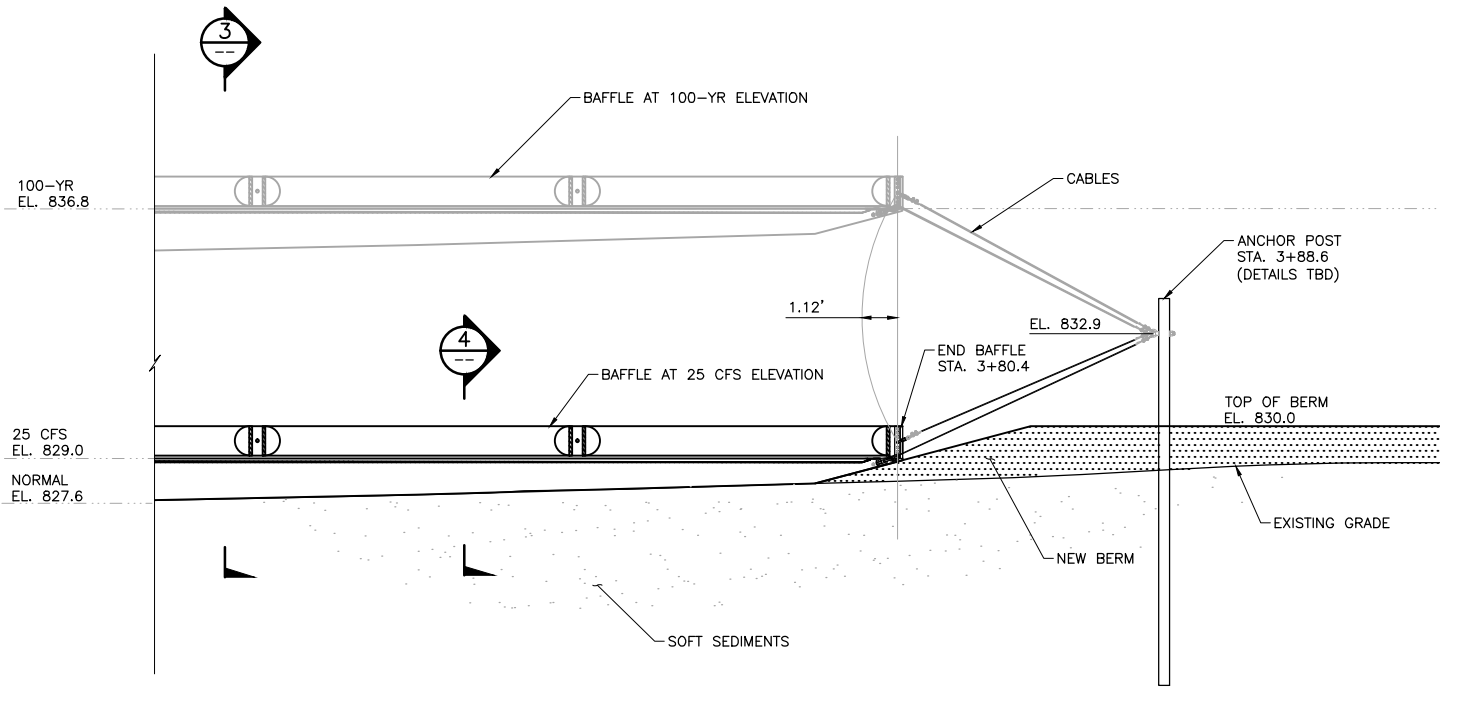
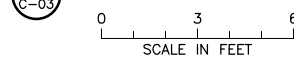
WATER BAFFLE PROFILE

BARR PROJECT No.	23271399.00
CLIENT PROJECT No.	13-28
DWG. No.	C-04
REV. No.	B

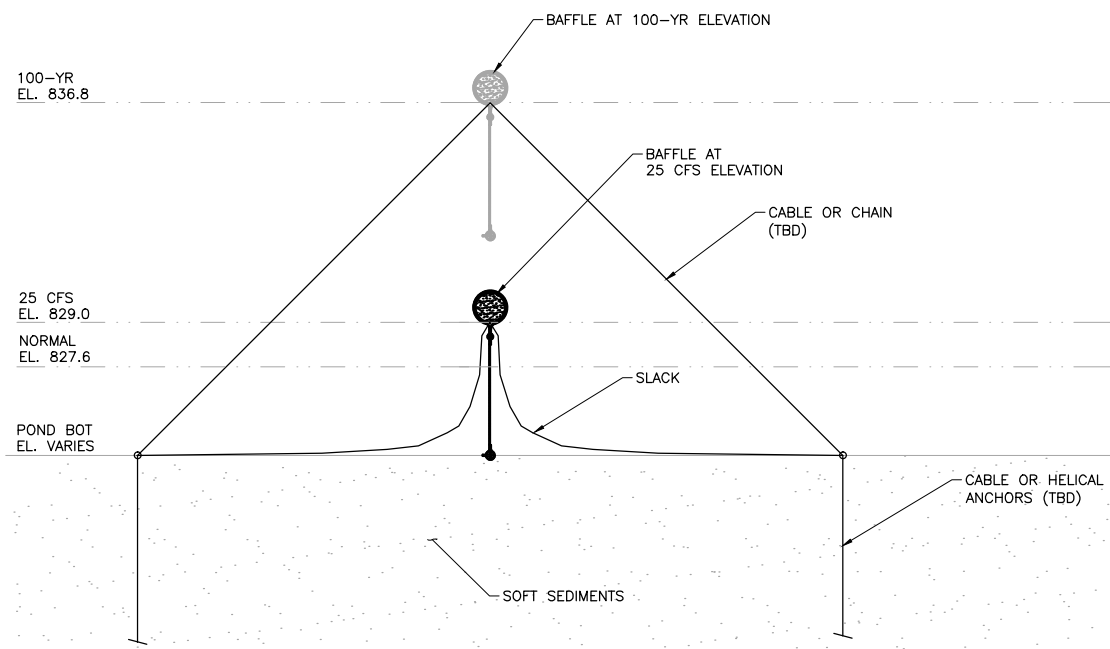
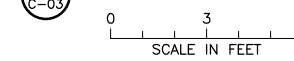




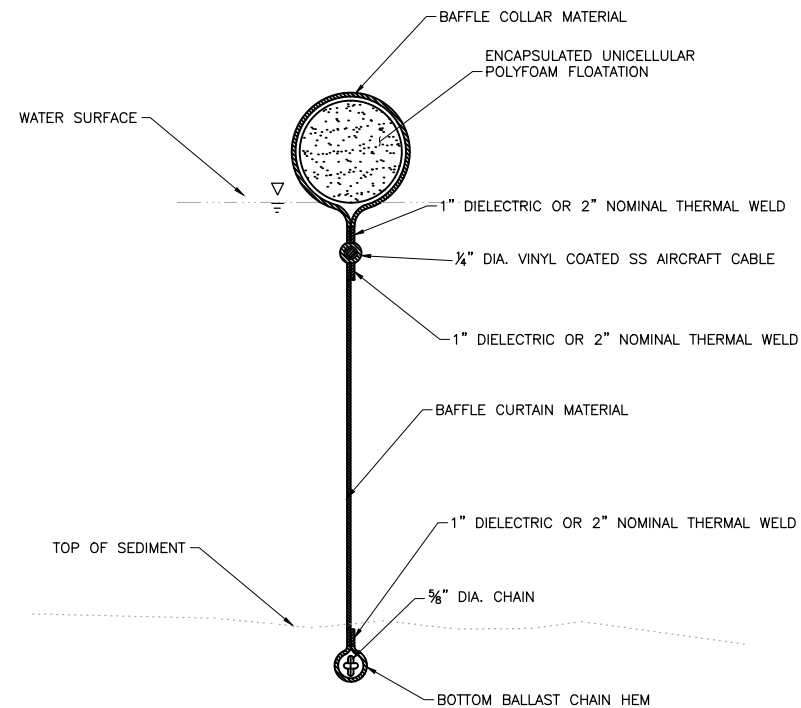
1 PROFILE: WATER BAFFLE TERMINATION AT NORTH END



2 PROFILE: WATER BAFFLE TERMINATION AT SOUTH END



3 SECTION: WATER BAFFLE VERTICAL MOVEMENT AND ANCHORING



4 SECTION: WATER BAFFLE

NO SCALE

CADD USER: Mike R. Hoefs FILE: O:\DESIGN\23271399\00\23271399\00\_C-05.DWG PLOT SCALE: 1:2 PLOT DATE: 12/4/2014 4:06 PM  
 MRH3: C:\Users\mhoefs\Documents\23271399\00\23271399\00\_C-05.dwg Plot of C 12/02/2014 16:03:57

NO.	BY	CHK	APP.	DATE	REVISION DESCRIPTION
B	MRH3	KLC	MRH3	12/5/14	ISSUED FOR COMMISSION REVIEW
A	MRH3	KLC	MRH3	12/3/14	ISSUED FOR CLIENT REVIEW

I HEREBY CERTIFY THAT THIS PLAN, SPECIFICATION, OR REPORT WAS PREPARED BY ME OR UNDER MY DIRECT SUPERVISION AND THAT I AM A DULY LICENSED PROFESSIONAL ENGINEER UNDER THE LAWS OF THE STATE OF MINNESOTA.  
 PRINTED NAME: MICHAEL R. HOEFS  
 SIGNATURE: \_\_\_\_\_  
 DATE: \_\_\_\_\_ LICENSE # 47971

CLIENT	12/3/14	12/5/14					
BID							
CONSTRUCTION							
PERMITTING							
RECORD							
RELEASED TO/FOR	A	B	C	0	1	2	3
DATE RELEASED							

**BARR**  
 Project Office:  
 BARR ENGINEERING CO.  
 4700 WEST 77TH STREET  
 MINNEAPOLIS, MN.  
 55435-4803  
 Corporate Headquarters:  
 Minneapolis, Minnesota  
 Ph: 1-800-632-2277

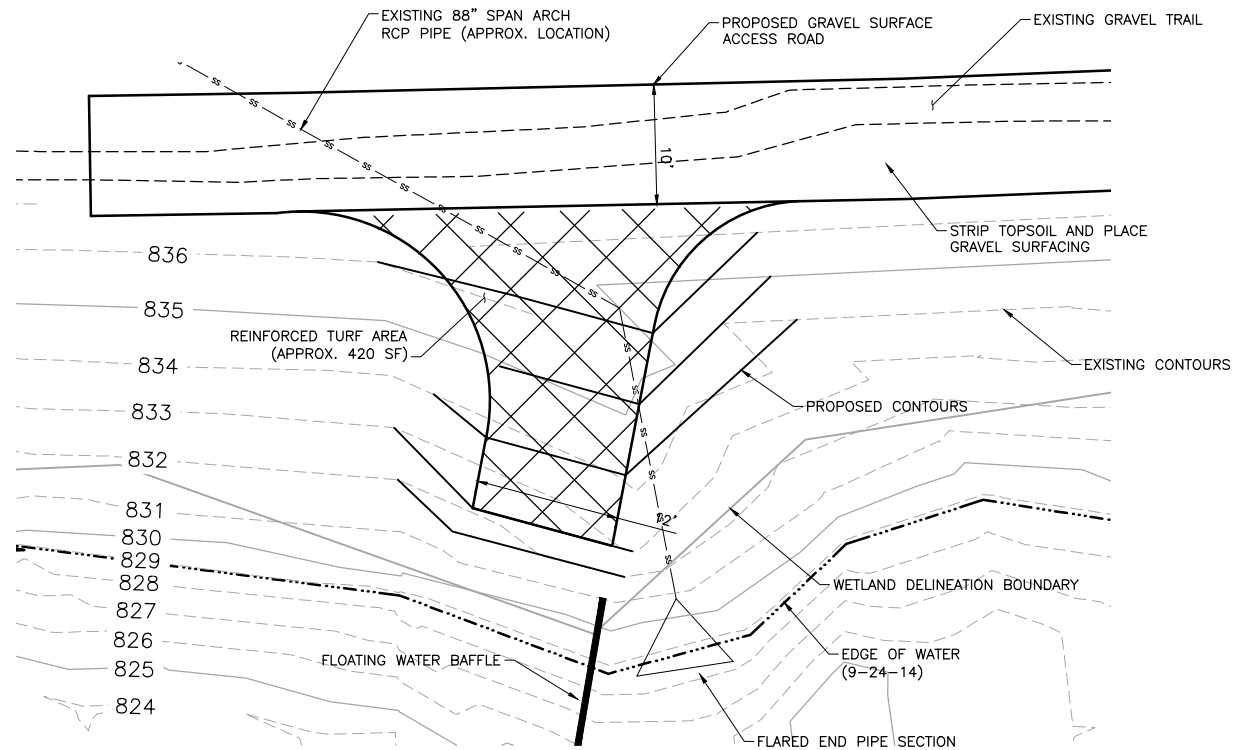
Scale	AS SHOWN
Date	11/25/14
Drawn	MRH3
Checked	KLC
Designed	MRH3
Approved	MRH3



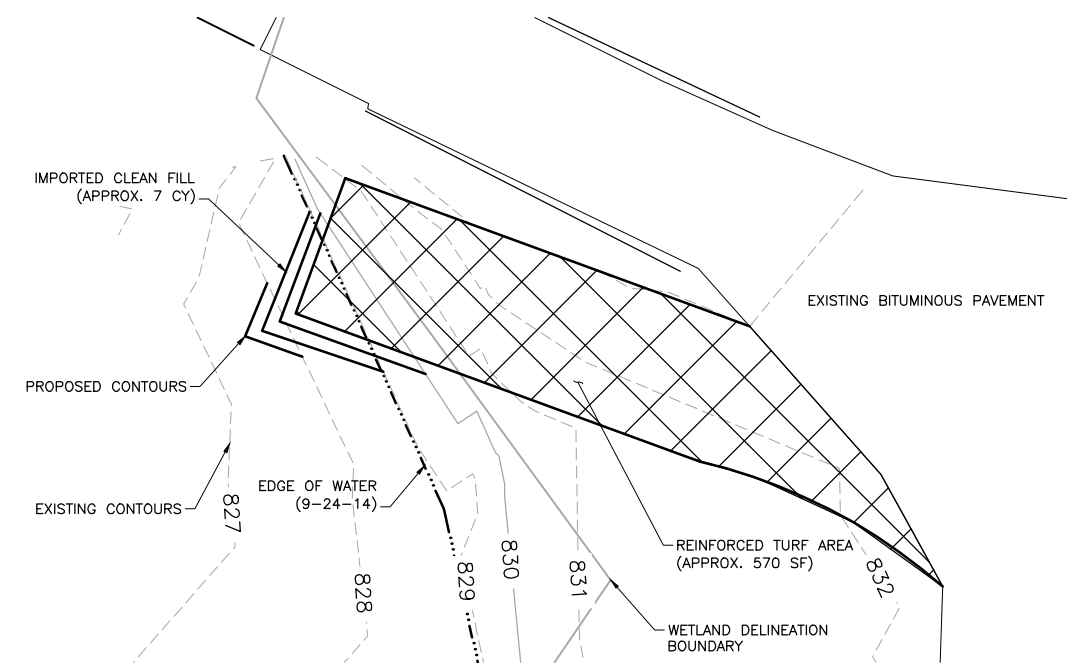
SCHAPER POND IMPROVEMENTS  
 GOLDEN VALLEY, MN  
 WATER BAFFLE DETAILS

BARR PROJECT No. 23271399.00	
CLIENT PROJECT No. 13-28	
DWG. No. C-05	REV. No. B

50%  
 PRELIMINARY DRAFT  
 12/5/14



**1**  
C-03  
**DETAIL: BAFFLE DEBRIS REMOVAL AREA**  
0 4 8 12 16  
SCALE IN FEET



**2**  
C-03  
**DETAIL: DEBRIS REMOVAL AREA AT BRIDGE**  
0 4 8 12 16  
SCALE IN FEET

- NOTES:**
1. STRIP AND SALVAGE EXISTING TOPSOIL MATERIALS.
  2. REMOVE EXISTING CATTAILS AND SOFT SEDIMENT IN FILL AREA.
  3. PLACE GEOTEXTILE FABRIC ON SUBGRADE.
  4. PLACE AND COMPACT CLEAN FILL.
  5. INSTALL REINFORCED TURF MATERIALS.

50%  
PRELIMINARY DRAFT  
12/5/2014

CADD USER: Mike R. Hoefs FILE: O:\DESIGN\2327139900\2327139900\_C-06.DWG PLOT SCALE: 1:2 PLOT DATE: 12/4/2014 4:05 PM  
 Xrefs\_in\_Drawing - O:\Design\2327139900\2327139900\_BASE\_EXISTING\_C30.dwg  
 MRH3 - O:\Design\2327139900\2327139900\_C-06.dwg Plot: 01 11/26/2014 11:59:41

NO.	BY	CHK	APP.	DATE	REVISION DESCRIPTION
B	MRH3	KLC	MRH3	12/5/14	ISSUED FOR COMMISSION REVIEW
A	MRH3	KLC	MRH3	12/3/14	ISSUED FOR CLIENT REVIEW

I HEREBY CERTIFY THAT THIS PLAN, SPECIFICATION, OR REPORT WAS PREPARED BY ME OR UNDER MY DIRECT SUPERVISION AND THAT I AM A DULY LICENSED PROFESSIONAL ENGINEER UNDER THE LAWS OF THE STATE OF MINNESOTA.

PRINTED NAME: MICHAEL R. HOEFS  
SIGNATURE: \_\_\_\_\_  
DATE: \_\_\_\_\_ LICENSE # 47971

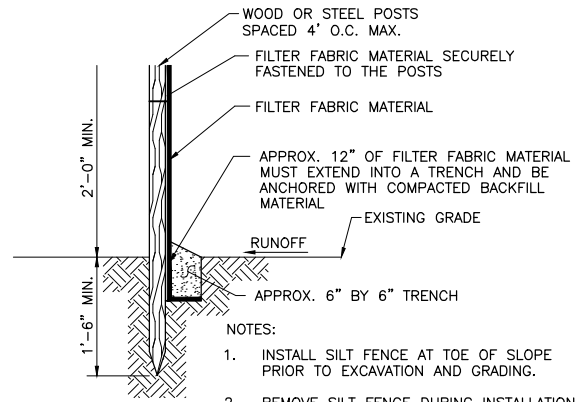
CLIENT	12/3/14	12/5/14							
BID									
CONSTRUCTION									
PERMIT									
RECORD									
RELEASED TO/FOR	A	B	C	0	1	2	3		
DATE RELEASED									

**BARR**  
Project Office:  
BARR ENGINEERING CO.  
4700 WEST 77TH STREET  
MINNEAPOLIS, MN.  
55435-4803  
Corporate Headquarters:  
Minneapolis, Minnesota  
Ph: 1-800-632-2277

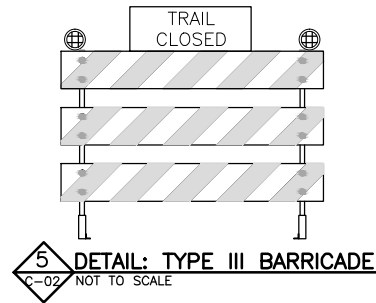
Scale	AS SHOWN
Date	10/31/14
Drawn	MRH3
Checked	KLC
Designed	MRH3
Approved	MRH3



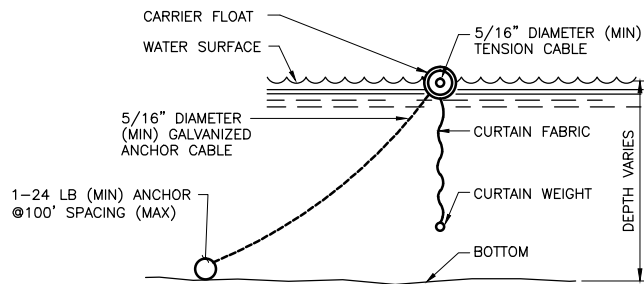
SCHAPER POND IMPROVEMENTS GOLDEN VALLEY, MN		BARR PROJECT No. <b>23271399.00</b>
DEBRIS REMOVAL AREA DETAILS		CLIENT PROJECT No. <b>13-28</b>
DWG. No. <b>C-06</b>	REV. No. <b>B</b>	



**2** **DETAIL: SILT FENCE**  
C-02 NOT TO SCALE  
SCALE IN FEET

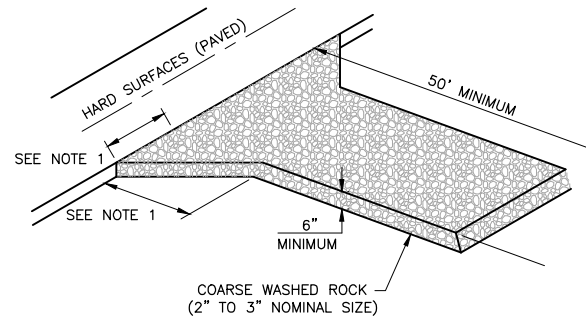


**5** **DETAIL: TYPE III BARRICADE**  
C-02 NOT TO SCALE



- NOTES:
- ELIMINATE ANCHOR AND TENSION CABLE FOR WATER DEPTHS LESS THAN 3'-0".
  - ANCHOR TENSION CABLE AT BOTH SIDES WITH STEEL POSTS OF DIAMETER AND LENGTH TO PREVENT BENDING AND PULL-OUT
  - MATERIALS:
    - CURTAIN - 22 OZ VINYL COATED NYLON FABRIC
    - FLOAT - 8" MINIMUM DIAMETER PLASTIC SEGMENTS
    - CURTAIN WEIGHT - CONTINUOUS GALVANIZED STEEL CHAIN 5/16" MINIMUM DIAMETER, OR SEGMENTS OF 5/16" DIAMETER STEEL CABLE, 24" LONG @ 12" BETWEEN PIECES

**3** **DETAIL: FLOTATION SILTATION CURTAIN**  
C-02 NOT TO SCALE



- NOTES:
- 8'-0" MAXIMUM UNLESS DIRECTED OTHERWISE ON BOTH SIDES OF ENTRANCE
  - REMOVE DURING SITE RESTORATION ACTIVITIES

**6** **DETAIL: EROSION CONTROL CONSTRUCTION ENTRANCE**  
C-02 NOT TO SCALE

CADD USER: Mike R. Hoefs FILE: O:\DESIGN\23271399\00\2327139900\_D-01.DWG PLOT SCALE: 1:2 PLOT DATE: 12/4/2014 4:04 PM  
 MRH3 O:\Design\23271399\00\2327139900\_D-01.dwg Plot at 0 11/26/2014 12:06:11

50%  
 PRELIMINARY DRAFT  
 12/5/2014

				I HEREBY CERTIFY THAT THIS PLAN, SPECIFICATION, OR REPORT WAS PREPARED BY ME OR UNDER MY DIRECT SUPERVISION AND THAT I AM A DULY LICENSED PROFESSIONAL ENGINEER UNDER THE LAWS OF THE STATE OF MINNESOTA. PRINTED NAME: MICHAEL R. HOEFS SIGNATURE: _____ DATE: _____ LICENSE # 47971				CLIENT: 12/3/14 12/5/14 BID CONSTRUCTION PERMIT RECORD RELEASED TO/FOR: A B C 0 1 2 3 DATE RELEASED				Project Office: <b>BARR ENGINEERING CO.</b> 4700 WEST 77TH STREET MINNEAPOLIS, MN. 55435-4803 Corporate Headquarters: Minneapolis, Minnesota Ph: 1-800-632-2277 www.barr.com				Scale: AS SHOWN Date: 10/31/14 Drawn: MRH3 Checked: KLC Designed: MRH3 Approved: MRH3				<b>SCHAPER POND IMPROVEMENTS</b> <b>GOLDEN VALLEY, MN</b> <b>DETAILS</b>				BARR PROJECT No. <b>23271399.00</b> CLIENT PROJECT No. <b>13-28</b> DWG. No. <b>D-01</b> REV. No. <b>B</b>			
NO.	BY	CHK.	APP.	DATE	REVISION	DESCRIPTION																					
B	MRH3	KLC	MRH3	12/5/14	ISSUED FOR COMMISSION REVIEW																						
A	MRH3	KLC	MRH3	12/3/14	ISSUED FOR CLIENT REVIEW																						

