

Bassett Creek

Stream and Habitat Restoration Implementation Plan



Open House March 6, 2007

Bassett Creek Stream and Habitat Restoration Implementation Plan

Public Land Survey: streams and wetlands

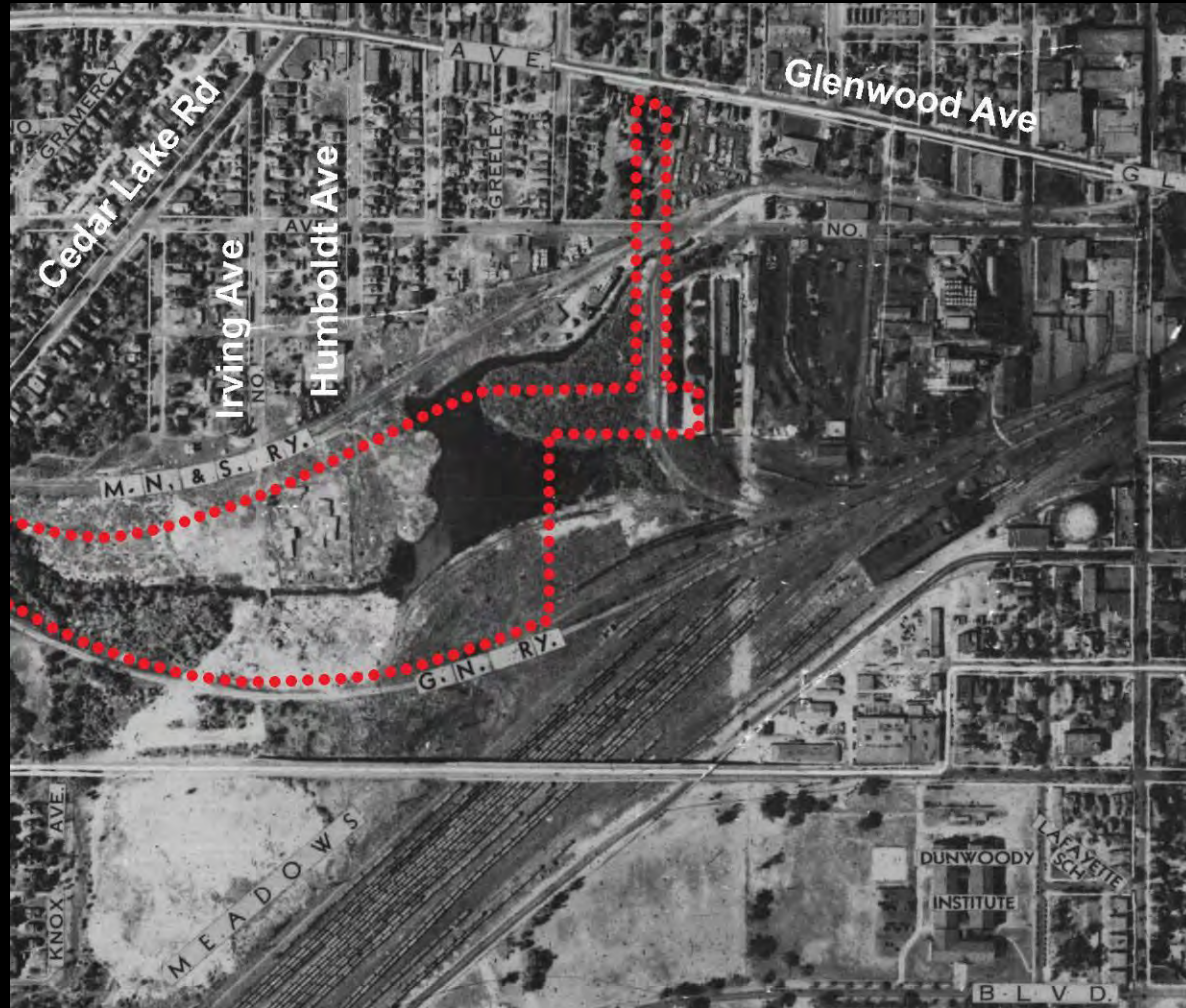
1854



Irving Avenue Dump

site history

1934



1936



Riprapping Bassett's Creek and clearing channel.

July 1936

Irving Avenue Dump: active 1933-1970's

site history

1937



Fill material:

- Demolition debris
- Ash
- Cinders
- Wood
- Glass
- Metal
- Concrete
- Brick
- Household garbage
- Industrial materials

Existing conditions: 2004

site history



Open House March 6, 2007

Bassett Creek Stream and Habitat Restoration Implementation Plan



Bassett Creek Stream and Habitat Restoration Implementation Plan

October, 2007



figure 5.0

The preferred design concept for Bassett Creek Commons includes a rehabilitated Bassett Creek with functioning riparian habitat, an expanded floodway, and large meanders. Upland areas are converted to naturalized prairie, and a savanna extends from the existing tree canopy to the south. Open space components include a system of iconic bridges and internal trails with links to the

neighborhood. The Luce Line Regional Trail enters the Commons via a railroad underpass (currently active) and links to Van White Memorial Boulevard. The primary use area is a great lawn which serves as an informal gathering place and leads to views of the revitalized creek and to a learning terrace with interpretive opportunities. Major entry points connect to Cedar Lake Road both north and south of the creek and to Van White Memorial Boulevard at a new parkway road.