



## Bassett Creek Watershed Management Commission

### MEMO

To: BCWMC Commissioners  
From: Laura Jester, Administrator  
Date: May 11, 2016

**RE: Consider Allowing Major Maintenance of Ponds Along Trunk System to be Included in CIP Projects**

At a Commission meeting last summer and again last month, you heard from a Crystal resident concerned about sedimentation in Winnetka Pond (just east of Winnetka and 36<sup>th</sup> Ave). In discussions with Crystal staff (Mark Ray), the Commission Engineer (Jim Herbert), and Commissioner Mueller, the question was raised about the BCWMC's possible role in dredging this pond because it is part of the North Branch of Bassett Creek and part of the BCWMC trunk system (map attached).

The approved 2018 BCWMC CIP project is "Bassett Creek Park Pond Dredging" (as seen in meeting materials for 5C). Bassett Creek Park Pond is also part of the North Branch of Bassett Creek and the trunk system, as well as being a component of the Flood Control Project. Staff requests that the Commission consider the appropriateness of including the Winnetka Pond dredging work in the 2018 CIP project because of the similarities of the work and proximity of the ponds.

However, this question has implications on future CIP projects as there are many ponds in the watershed along the trunk system (see map attached). Pond dredging and maintenance does improve water quality and reduce flooding potential in these creeks because it provides more storage for stormwater and allows more pollutants to settle out before water continues downstream.

Policy #110 in the BCWMC Watershed Management Plan includes criteria for CIP projects (see below). Using these criteria, it seems that dredging of ponds within the trunk system would be an eligible CIP project.

**BCWMC Watershed Management Plan Policy #110.** The BCWMC will consider including projects in the CIP that meet one or more of the following "gatekeeper" criteria.

- Project is part of the BCWMC trunk system (see Section 2.8.1, Figure 2-14 and Figure 2-15)
- Project improves or protects water quality in a priority waterbody
- Project addresses an approved TMDL or watershed restoration and protection strategy (WRAPS)
- Project addresses flooding concern

The BCWMC will use the following criteria, in addition to those listed above, to aid in the prioritization of projects:

- Project protects or restores previous Commission investments in infrastructure
- Project addresses intercommunity drainage issues
- Project addresses erosion and sedimentation issues
- Project will address multiple Commission goals (e.g., water quality, runoff volume, aesthetics, wildlife habitat, recreation, etc.)
- Subwatershed draining to project includes more than one community
- Addresses significant infrastructure or property damage concerns

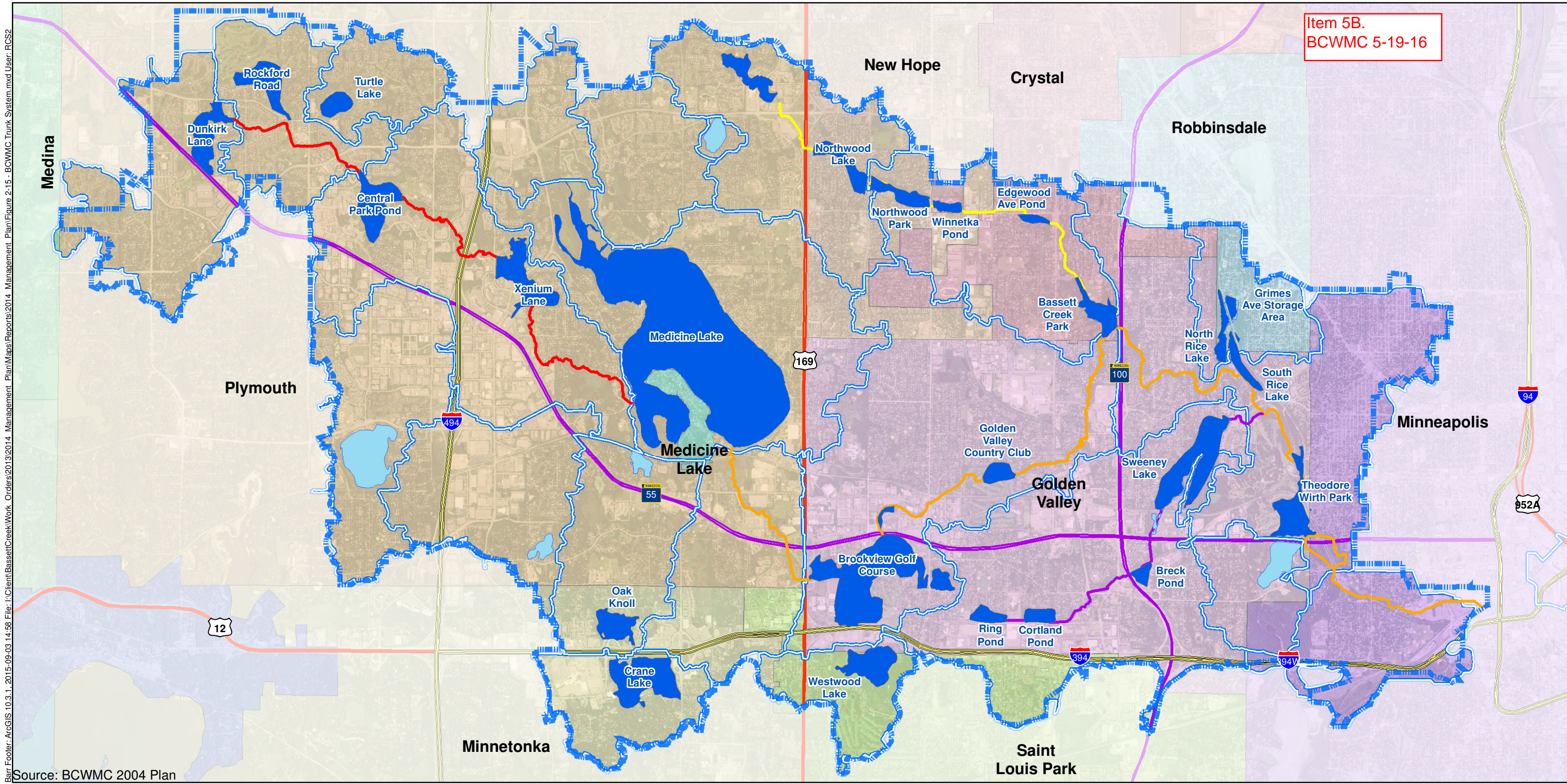
The BCWMC will place a higher priority on projects that incorporate multiple benefits, and will seek opportunities to incorporate multiple benefits into BCWMC projects, as opportunities allow.

---

Staff is seeking direction from the Commission on this issue and more specifically, whether or not the feasibility study for the 2018 CIP project should be expanded to include Winnetka Pond dredging in addition to Bassett Creek Park Pond dredging.



Item 5B.  
BCWMC 5-19-16



Source: BCWMC 2004 Plan

- BCWMC Jurisdictional Boundary
- Major Subwatersheds
- Trunk System Components**
- Main Stem Bassett Creek
- North Branch Bassett
- Plymouth Creek
- Sweeney Branch Bassett Creek
- Designated Water Quantity and Water Quality Storage Facilities (From Fig. 15 of 2004 Plan)

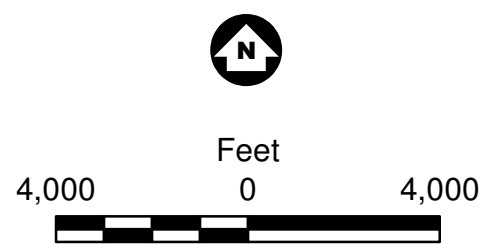


Figure 2-15

BCWMC TRUNK SYSTEM  
Bassett Creek Watershed  
Management Commission  
2015 Management Plan

Barr Footer: ArcGIS 10.3.1, 2015-09-03 14:58 File: I:\Client\BassettCreek\Work\_Orders\2013\2014\_Management\_Plan\Map\BassettCreek\Work\_Orders\2013\2014\_Management\_Plan\Figure 2-15 - BCWMC Trunk System.mxd User: RGS2