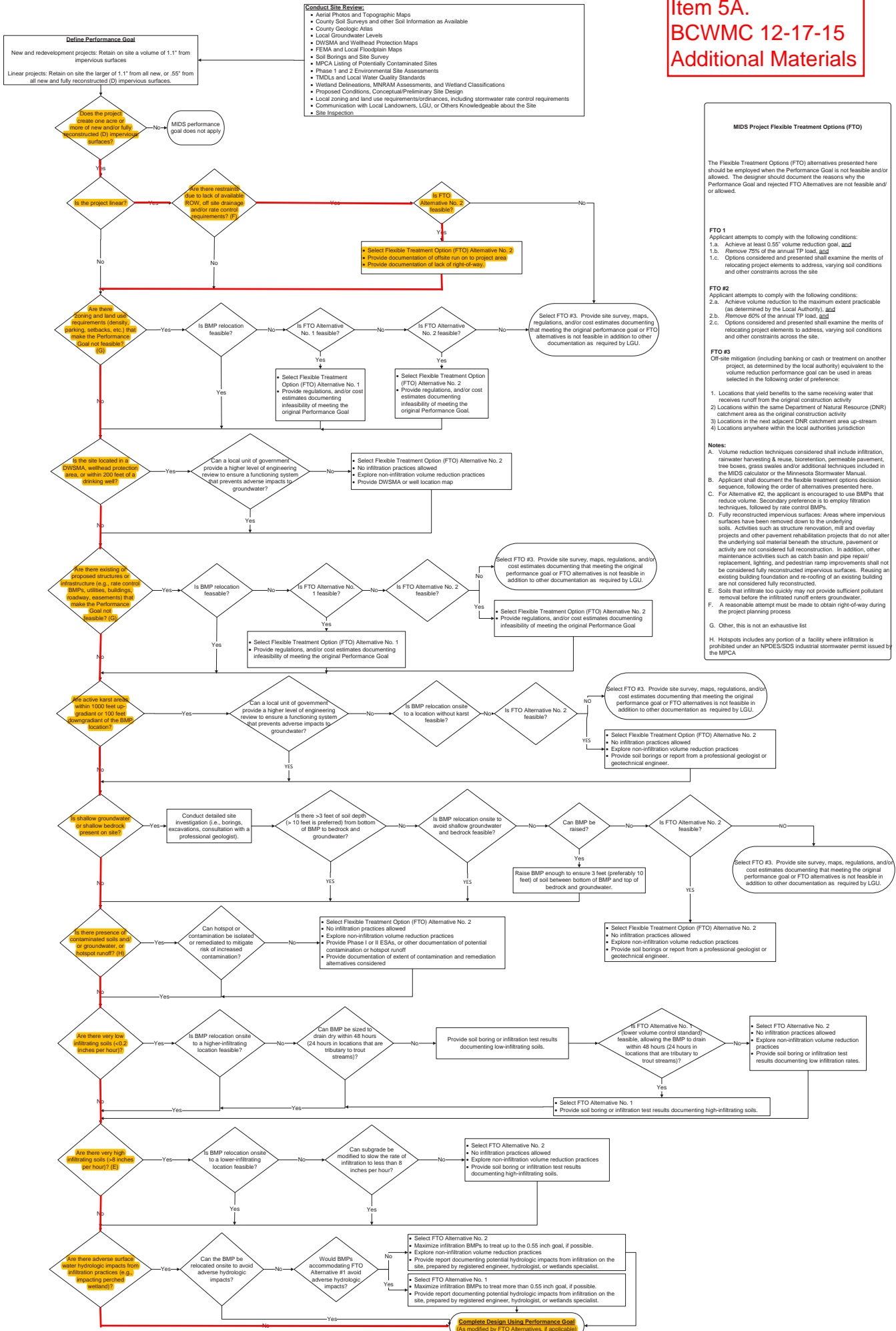
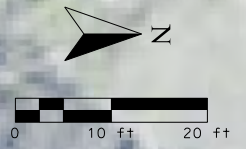


Item 5A. BCWMC 12-17-15 Additional Materials





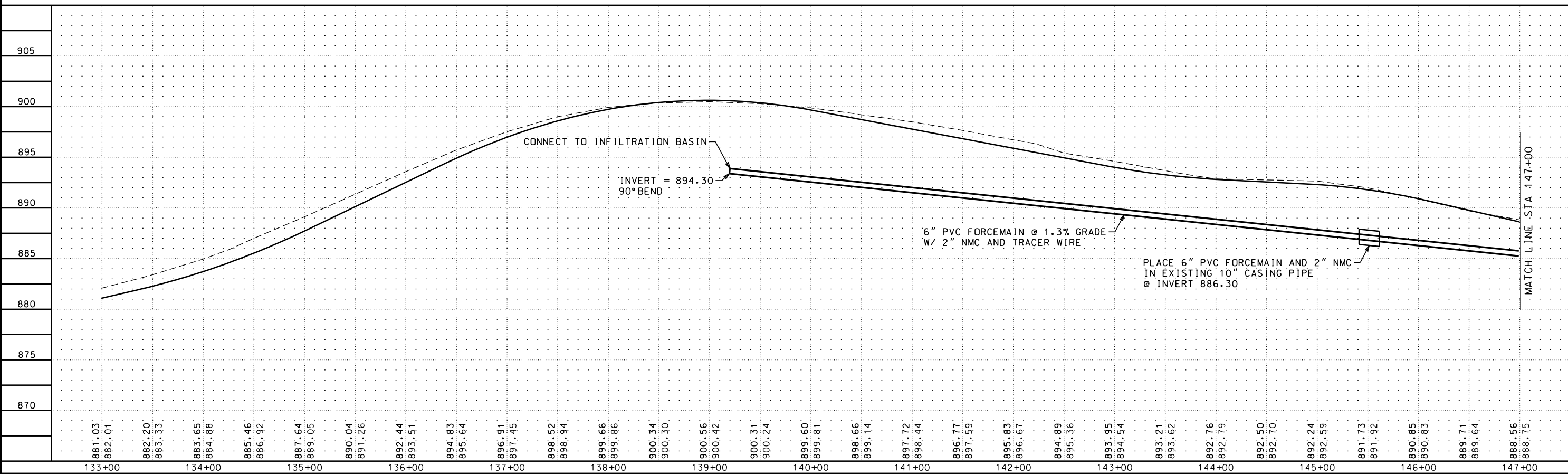
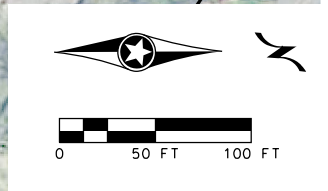
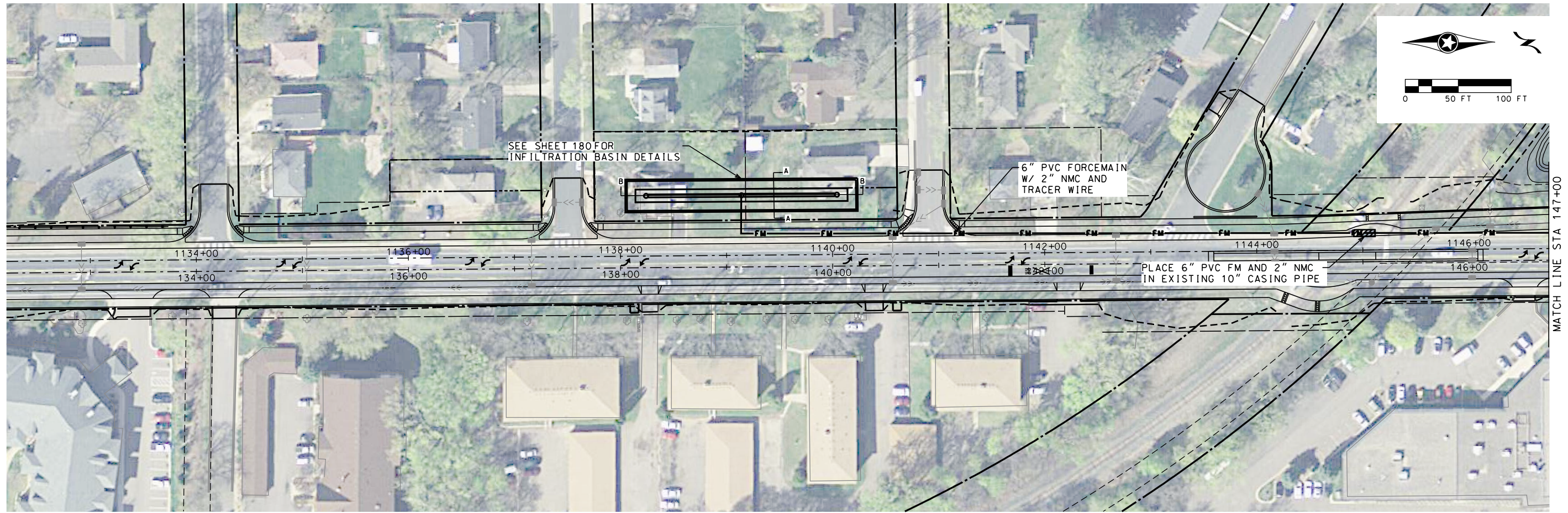
**West Side**  
100 Year Level = 871.00  
Fill in Floodplain = 41 Cu Yd  
Cut in Floodplain = 46 Cu Yd  
Net Increase in Floodplain = 5 Cu Yd

**East Side**  
100 Year Level = 871.00  
Fill in Floodplain = 23 Cu Yd  
Cut in Floodplain = 60 Cu Yd  
Net Increase in Floodplain = 37 Cu Yd

**Legend**

- Cut in Floodplain
- Fill in Floodplain
- Existing Contours
- Proposed Contours





NO.	DATE	BY	CHK	REVISIONS

Design By: **ADP**  
 Plan By: **BOV**  
 Checked By: **BRS**  
 Approved By: **ADP**

I HEREBY CERTIFY THAT THIS PLAN, SPECIFICATION, OR REPORT WAS PREPARED BY OR UNDER MY DIRECT SUPERVISION AND THAT I AM A DULY LICENSED PROFESSIONAL ENGINEER UNDER THE LAWS OF THE STATE OF MINNESOTA.  
 CERTIFIED BY: **L. ANDREW OSBORN**  
 LICENSE NO. **48200**  
 DATE: **10/22/15**

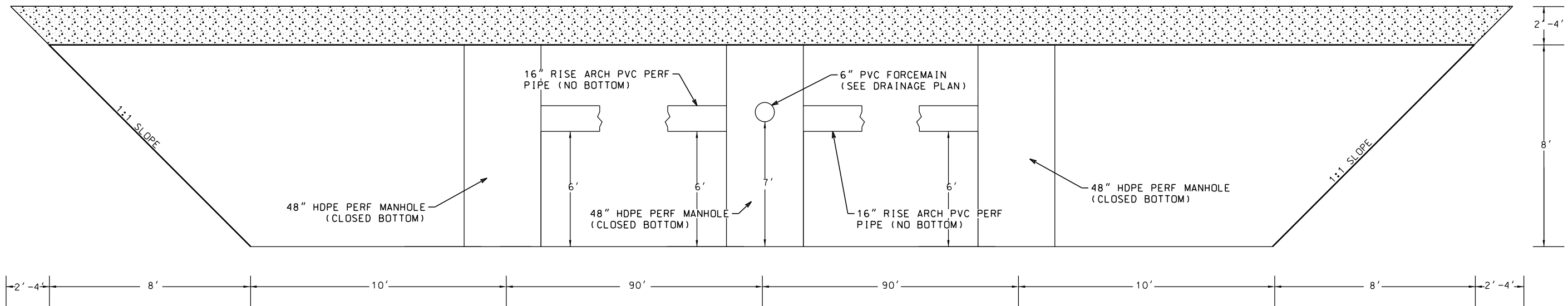
**WSB**  
 & Associates, Inc.  
 701 Xenia Avenue South, Suite 300  
 Minneapolis, MN 55416  
 www.wsbeng.com  
 INFRASTRUCTURE | ENGINEERING | PLANNING | CONSTRUCTION

city of **golden valley**  
**Douglas Drive Improvements**  
 Golden Valley, Minnesota

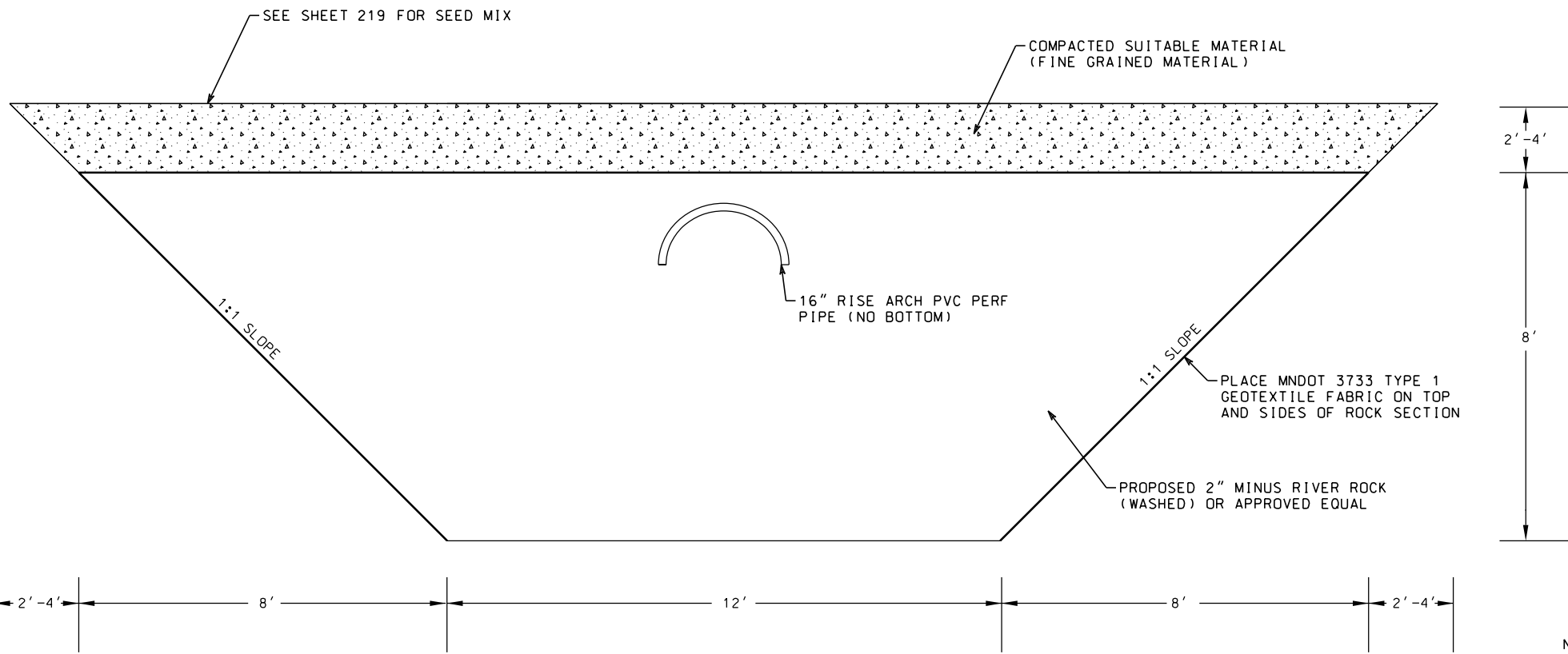
**GOLDEN VALLEY, MINNESOTA**  
**HONEYWELL POND PLAN**  
 S.P. 2723-117/C.P. 10-04/S.A.P. 027-702-021/S.A.P. 128-020-016/S.A.P. 128-020-017/  
 S.A.P. 128-410-001/S.A.P. 128-411-006/S.A.P. 128-420-001/S.A.P. 027-666-018

SHEET  
**174**  
 OF  
**340**  
 SHEETS

Date Printed: 12/1/2015  
 File Name: K:\Data\10\_Coord\Plan\1701hw03.dgn



SECTION A-A  
NOT TO SCALE



NOTE: ALL COSTS OF EXCAVATION BELOW GRADE AND PLACEMENT OF GRANULAR BEDDING FOR PIPE ITEMS.

SECTION B-B  
NOT TO SCALE

NOTE: BOTTOM OF INFILTRATION BASIN APPROXIMATELY 890.0' - 890.2'. EXACT ELEVATION TO BE DETERMINED BY ENGINEER IN THE FIELD.

Date Printed: 12/1/2015  
File Name: R:\CADD\10\_Cadd\Plan\701hw09.dgn

NO.	DATE	BY	CHK	REVISIONS

Design By: **ADP**  
 Plan By: **BOV**  
 Checked By: **BRS**  
 Approved By: **ADP**

I HEREBY CERTIFY THAT THIS PLAN, SPECIFICATION, OR REPORT WAS PREPARED BY OR UNDER MY DIRECT SUPERVISION AND THAT I AM A DULY LICENSED PROFESSIONAL ENGINEER UNDER THE LAWS OF THE STATE OF MINNESOTA.  
 CERTIFIED BY: **ANDREW ROSENBAUM PEPE**  
 LICENSE NO. **10/22/15** LIC. NO. **48200**

**WSB** & Associates, Inc.  
 701 Xenia Avenue South, Suite 300  
 Minneapolis, MN 55416  
 www.wsbeng.com  
 INFRASTRUCTURE | ENGINEERING | PLANNING | CONSTRUCTION

city of golden valley  
**Douglas Drive Improvements**  
 Golden Valley, Minnesota

GOLDEN VALLEY, MINNESOTA  
**DRAINAGE DETAILS**  
 S.P. 2723-117/C.P. 10-04/S.A.P. 027-702-021/S.A.P. 128-020-016/S.A.P. 128-020-017/  
 S.A.P. 128-410-001/S.A.P. 128-411-006/S.A.P. 128-420-001/S.A.P. 027-666-018

SHEET  
**180**  
 OF  
**340**  
 SHEETS