



Memorandum

To: Bassett Creek Watershed Management Commission (BCWMC)
From: Barr Engineering Co. (Barr)
Subject: Item 4F – Ridgedale Drive Improvements – Minnetonka, MN
BCWMC May 16, 2019 Meeting Agenda
Date: May 3, 2019
Project: 23270051 2019 2187

4F Ridgedale Drive Improvements – Minnetonka, MN BCWMC 2019-10

Summary:

Proposed Work: Street reconstruction

Basis for Review at Commission Meeting: Linear project with more than 5 acres of disturbance

Impervious Surface Area: Decrease 0.10 acres

Recommendation: Approval

General Background & Comments

The proposed linear project is located along Ridgedale Drive from Plymouth Road to Wayzata Boulevard in Minnetonka. The proposed linear project is primarily located in the Crane Lake subwatershed, but a portion of the project, near the intersection of Ridgedale Drive and Plymouth Road, extends into the Minnehaha Creek Watershed District. The proposed linear project includes the reconstruction of Ridgedale Drive, water main replacement, storm sewer upgrades, and water quality improvement features resulting in 14.24 acres of grading (disturbance). The proposed project creates 8.84 acres of reconstructed impervious surfaces and results in a net decrease of impervious surfaces of 0.10 acres, from 8.94 acres (existing) to 8.84 acres (proposed).

Capital Improvement Program (CIP) Project CL-3

Water quality improvements as part of the proposed linear project are included as Project CL-3 in Table 5-3: *BCWMC 2015-2025 capital improvement program (CIP)* in the BCWMC Watershed Management Plan. The City of Minnetonka completed a feasibility study for the CIP project in March 2019 and the Commission approved the feasibility study at their March 21, 2019 meeting. The BCWMC Engineer's review of 90% plans will be performed and summarized in a separate memorandum.

Floodplain

The proposed project does not involve work in the BCWMC 100-year floodplain; therefore, BCWMC floodplain review is not required.

Wetlands

The City of Minnetonka is the local government unit (LGU) responsible for administering the Wetland Conservation Act; therefore, BCWMC wetland review is not required.

Stormwater Management

The proposed linear project does not create one or more acres of net new impervious surfaces and therefore does not trigger the BCWMC requirements for rate control. The drainage patterns under existing and proposed conditions will remain similar; this project will not result in major changes to land use or topography.

Water Quality Management

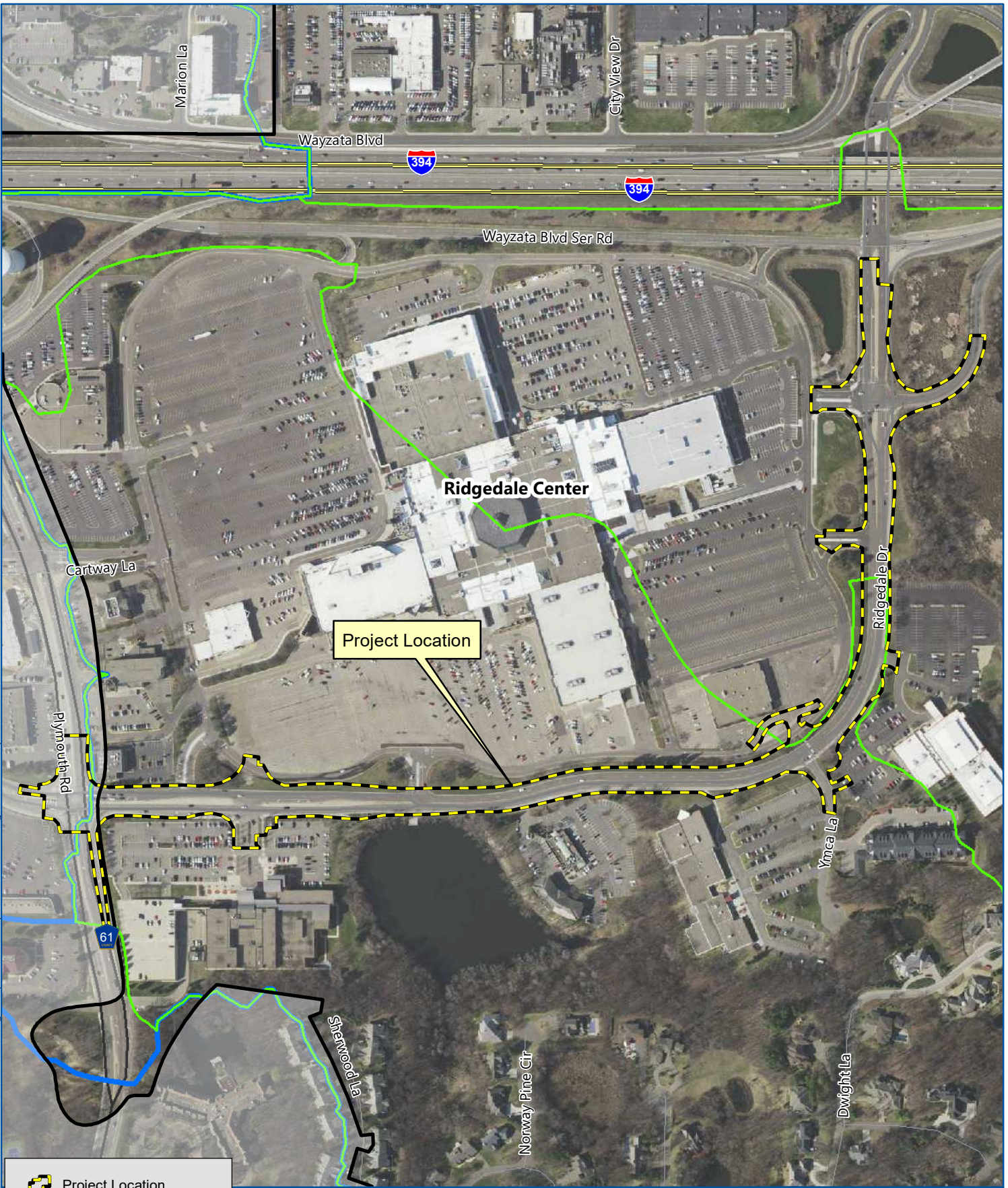
The proposed linear project does not create one or more acres of net new impervious surfaces and therefore does not trigger the BCWMC requirements for water quality treatment. As noted, the proposed water quality improvements will be reviewed as part of the CIP project.

Erosion and Sediment Control

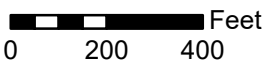
The proposed linear project creates more than one acre of land disturbance, therefore the project was submitted for erosion and sediment control review. Proposed temporary erosion and sediment control features include silt fence, stabilized construction exits, rapid stabilization, and inlet protection. Permanent erosion and sediment control features include riprap, seed, mulch, and erosion control blanket.

Recommendation

Approval.



- Project Location
- Municipality
- BCWMC Legal Boundary
- Major Subwatershed
- BCWMC Hydrologic Boundary
- Bassett Creek



BCWMC #2019-10
 RIDGEDALE DRIVE
 IMPROVEMENTS

LOCATION MAP