

# Climate action planning

Item 7D.  
BCWMC 10-15-20

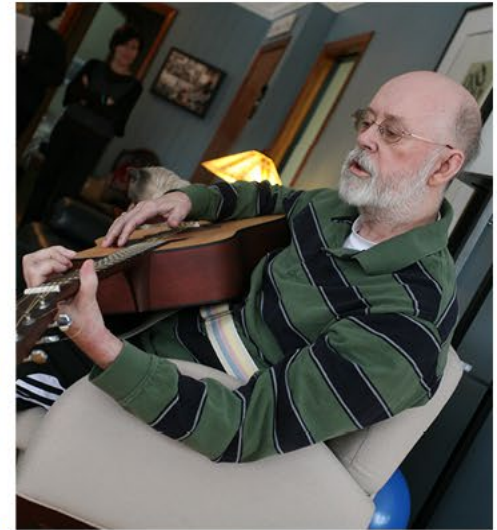


# Purpose of the briefing

- Review foundational climate strategies
- Discuss policy commitment: How do we advance a climate response in difficult times with intentional policies that match our priorities and meet long-term goals?



# Climate action plan that results in a more equitable and resilient Hennepin County



# Priorities for an impactful plan



Protect and engage people, especially vulnerable communities



Protect our buildings, roads, infrastructure and natural resources



Deliver services in times of disruption

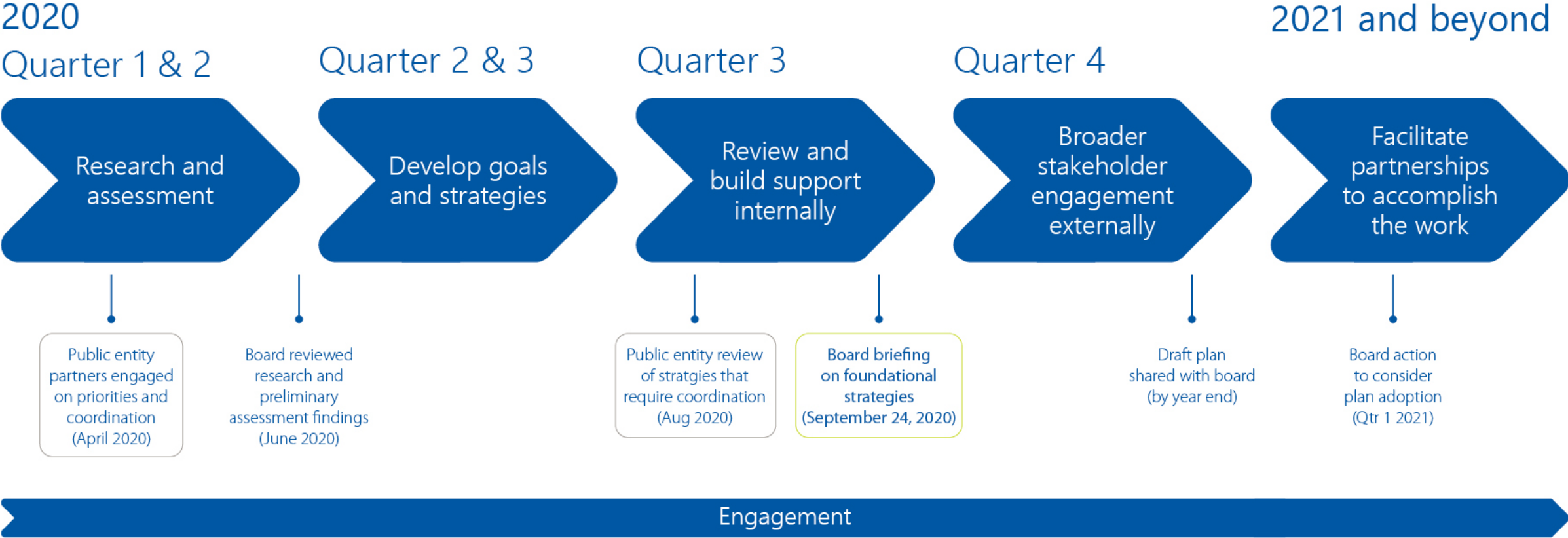


Reduce emissions in ways that align with core county functions and priorities



Partner in ways that can be most impactful

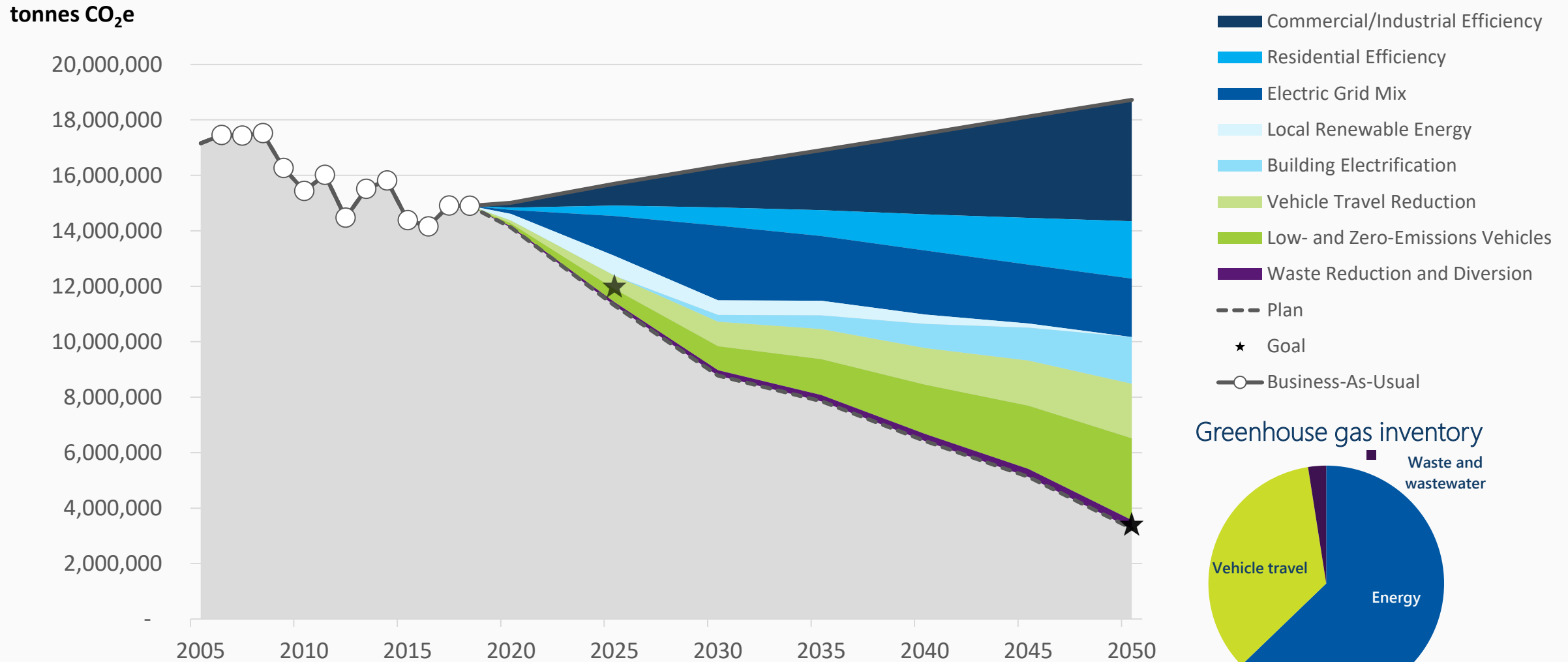
# Plan development timeline



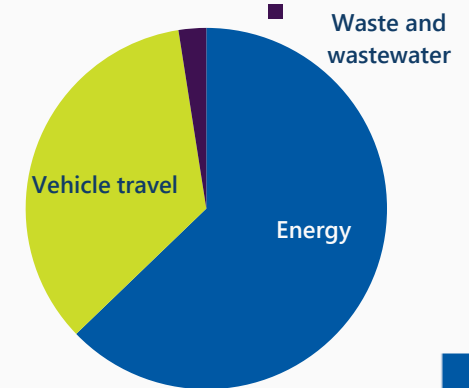
# Engagement: what we've heard so far

- The risks to residents, infrastructure and natural resources warrant a significant response.
- Acknowledge the transformational forces – shifted planning focus, impacts available resources, but also offer opportunities.
- Focus first on areas of agreement and ways forward.
  - Momentum with adaptation efforts - understand managing risk and not missing opportunities.
  - Lead by example in county operations to reduce greenhouse gas emissions.
- Need specific cost and return on investment information and a relevant action/framework for decision-making.
- Innovation, collaboration and resource prioritization is key to a successful climate response.

# Components to meet greenhouse gas reduction goals



Greenhouse gas inventory

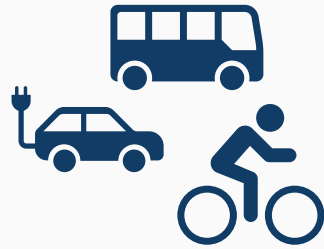


# Developing climate action strategies



People: health,  
behavior and  
disparity reduction

9 departments  
11 members



Transportation  
and infrastructure

7 departments  
16 members



Buildings and  
energy

4 departments  
10 members



Waste and  
materials

9 departments  
13 members



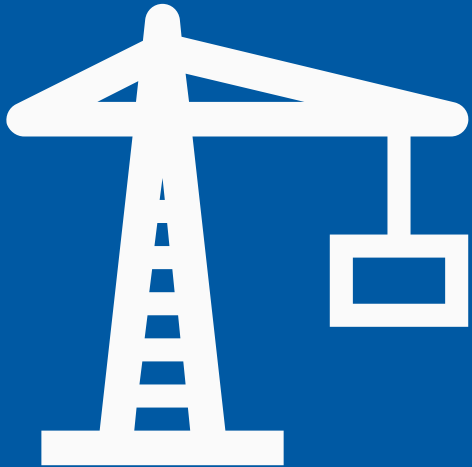
Water, natural  
resources and  
land use

7 departments  
8 members



# Developing foundational climate strategies

- Climate action teams developed 200+ strategies.
- Categorized strategies into the following themes:
  - Protect people and reduce racial disparities
  - Reduce emissions
  - Adapt and build resiliency
  - Lead by example in county operations
  - Partner to be most impactful
- Developed seven climate strategies to serve as the foundation for an impactful response to climate change.

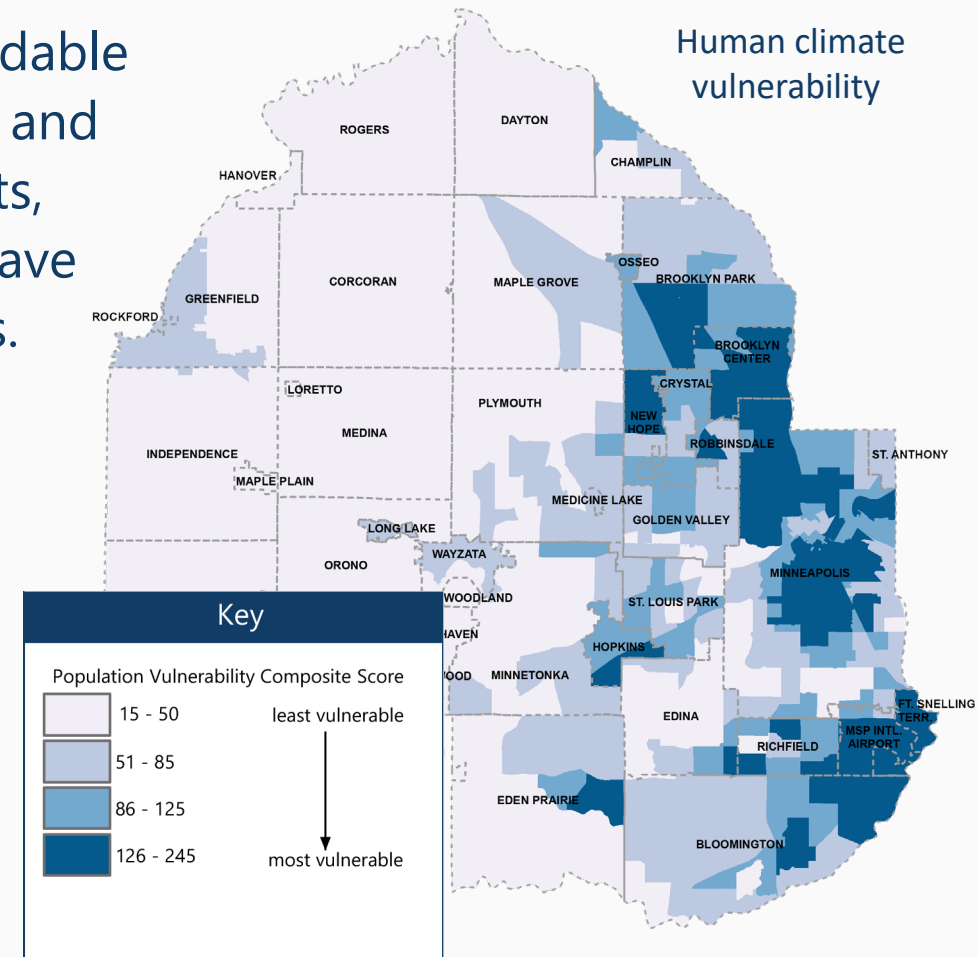


# Strategy:

## Build individual and community resilience



- Communicate climate risks, develop education efforts, and support collective action.
- Foster relationships with communities to engage, listen and respond with people-centered solutions.
- Strengthen access to affordable housing, healthcare, food, and transportation for residents, particularly in areas that have the greatest vulnerabilities.
- Improve preparation for and response to extreme weather.



## Strategy:

Transition to  
renewable  
energy sources  
and reduce  
energy use  
overall



- Invest in renewable energy through utility sources, community solar gardens and onsite solar.
- Prioritize conservation, efficiency and renewable energy in policies and program.
- Support affordable adoption of renewable energy and conservation for energy consumers, include small businesses and low-income households.

# Strategy:

## Cut greenhouse gases from transportation



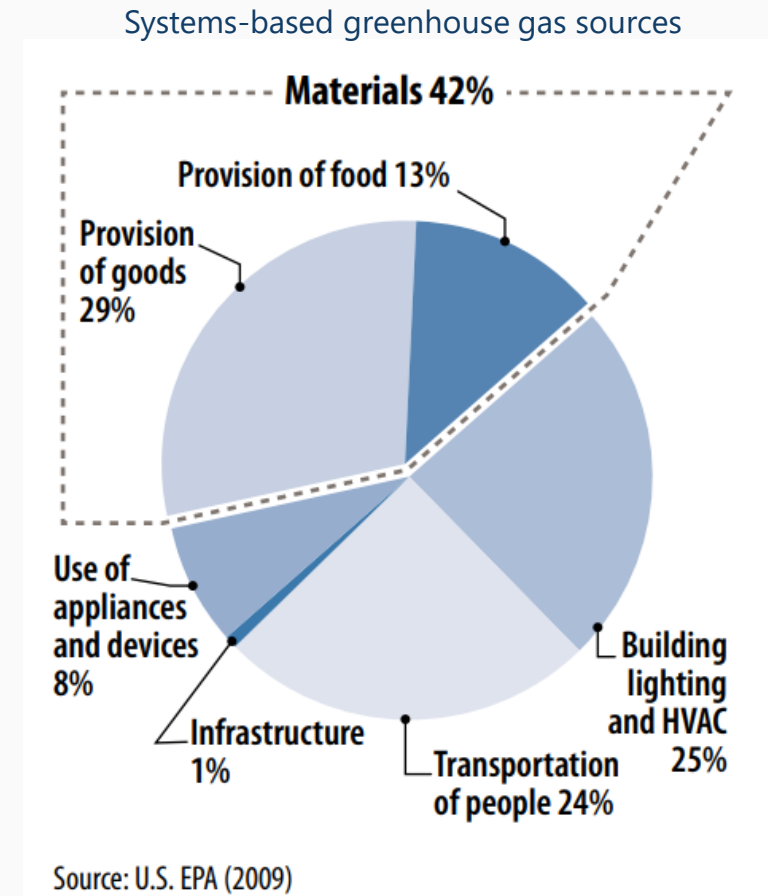
- Evaluate ways to reduce vehicle miles traveled in Hennepin County and throughout the region.
  - Advocate for the buildout of the planned transit routes.
  - Expand transit-oriented development, and bicycle and pedestrian facilities.
  - Reassess flexible work schedules and facilitate telecommuting for employees
- Reduce travel delays through Advanced Traffic Management Systems (ATMS).
- Promote electric vehicle infrastructure regionally by working with electrical utilities to install charging stations.



# Strategy: Prevent food waste and divert organic material from the trash



- Support food rescue efforts to divert more food to people in need.
- Help businesses and organizations that produce a lot of food waste implement best practices for preventing food waste.
- Develop organics recycling infrastructure by advancing anaerobic digestion and making improvements to the Brooklyn Park Transfer Station.
- Increase the use of compost in county projects.



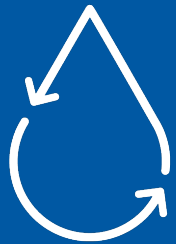
# Strategy: Design infrastructure, buildings and property to future climate conditions



- Work with local and regional partners to reassess stormwater design standards.
- Build and renovate county buildings following state's sustainable building guidelines (B3) as possible with a goal of net-zero emissions.
- Finalize and implement construction and demolition waste procedures.
- Use life cycle analysis for selecting climate-friendly building materials and furnishings.
- Implement a sustainable purchasing policy.

## Strategy:

Build and maintain green infrastructure and sequester carbon on all county-owned property

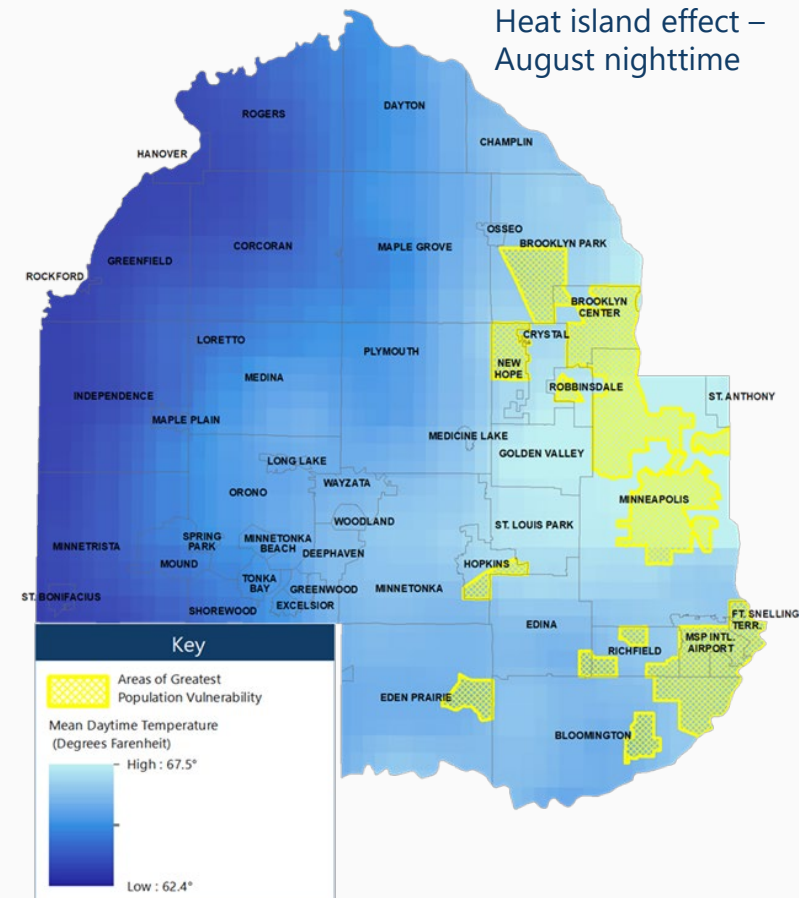


- Install green infrastructure to manage stormwater on county-owned property, including on tax-forfeited properties in flood prone areas to protect surrounding properties and create green spaces.
- Explore a green jobs/pathways program concept for installation, establishment, and maintenance of green infrastructure.
- Convert turf grass to plants that sequester carbon where appropriate.

**Strategy:**  
Decrease the heat island effect, especially in areas with highest vulnerability



- Coordinate operations of readily accessible and culturally appropriate cooling centers.
- Preserve mature trees, plant more trees and plants, and address maintenance issues.
- Convert hardscape where possible into pervious pavement or green infrastructure.
- Pursue site development performance standards that include green infrastructure.
- Gather better, real-time data to allow for targeted notification of weather-related warnings.





# How will we do this?

- Develop and include a climate analysis framework with a health and racial equity lens in budgets and planning work.
- Adopt “reach” goals by focus area, implement strategies, track indicators and evaluate results.
- Engage a broad range of stakeholders in understanding the impacts, developing solutions and taking action.
- Coordinate and collaborate with partners to analyze climate vulnerabilities, cut greenhouse gas emissions and build community resiliency.
- Develop a partnership model driven by mutual and regionally beneficial climate goals.

# Discussion:

## How to advance climate work in difficult times?



### **Build capacity with foundational strategies**

Are we moving in the right direction? Do the strategies presented meet your expectations for the county's response to climate change?



### **Prioritizing and aligning resources**

How do we pursue proactive, climate-driven investments when up-front cost increases limit their inclusion?



### **Foster partnerships**

How do we best advance a climate-driven partnership to achieve mutually beneficial goals?

# Next steps

- Conduct broader stakeholder engagement externally.
- Continue to develop and refine strategies based on feedback received.
- Draft plan document and prepare to share with commissioners by year end.