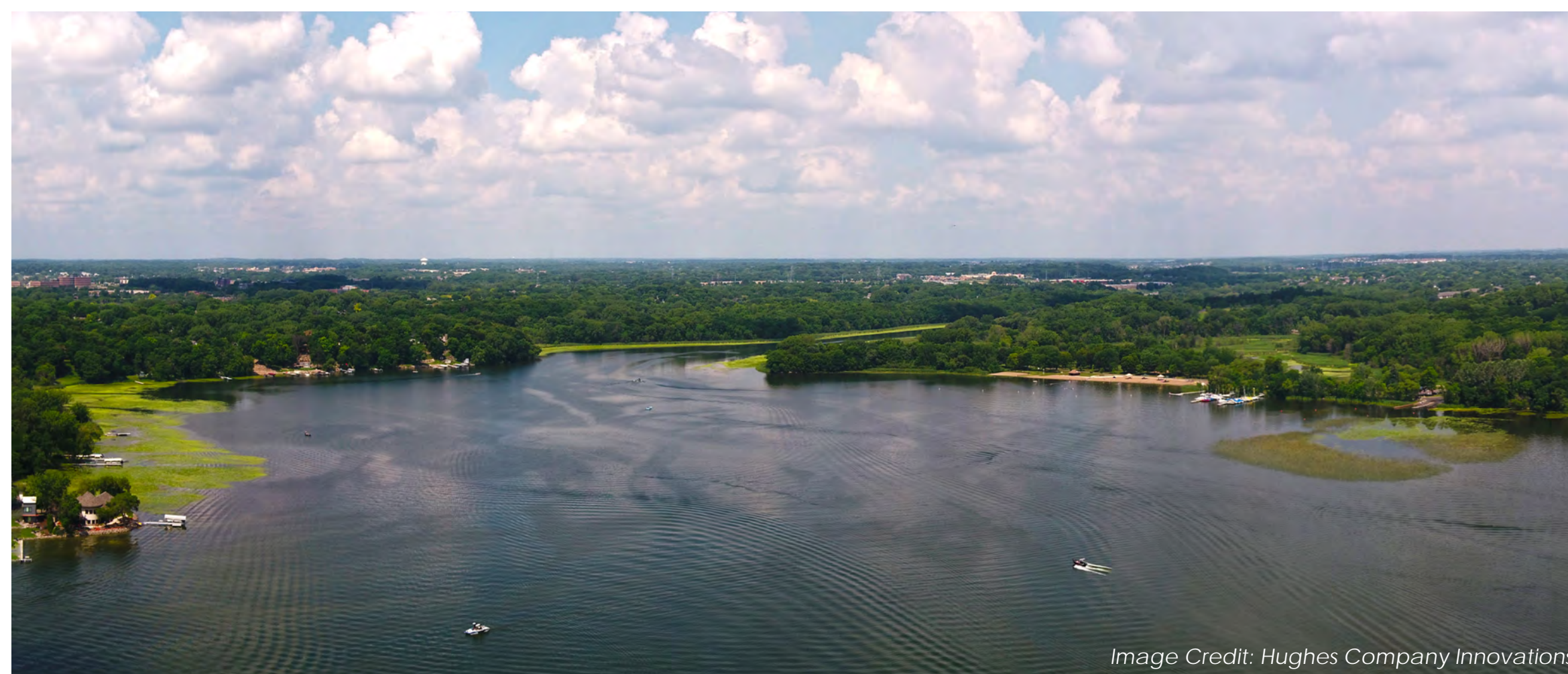
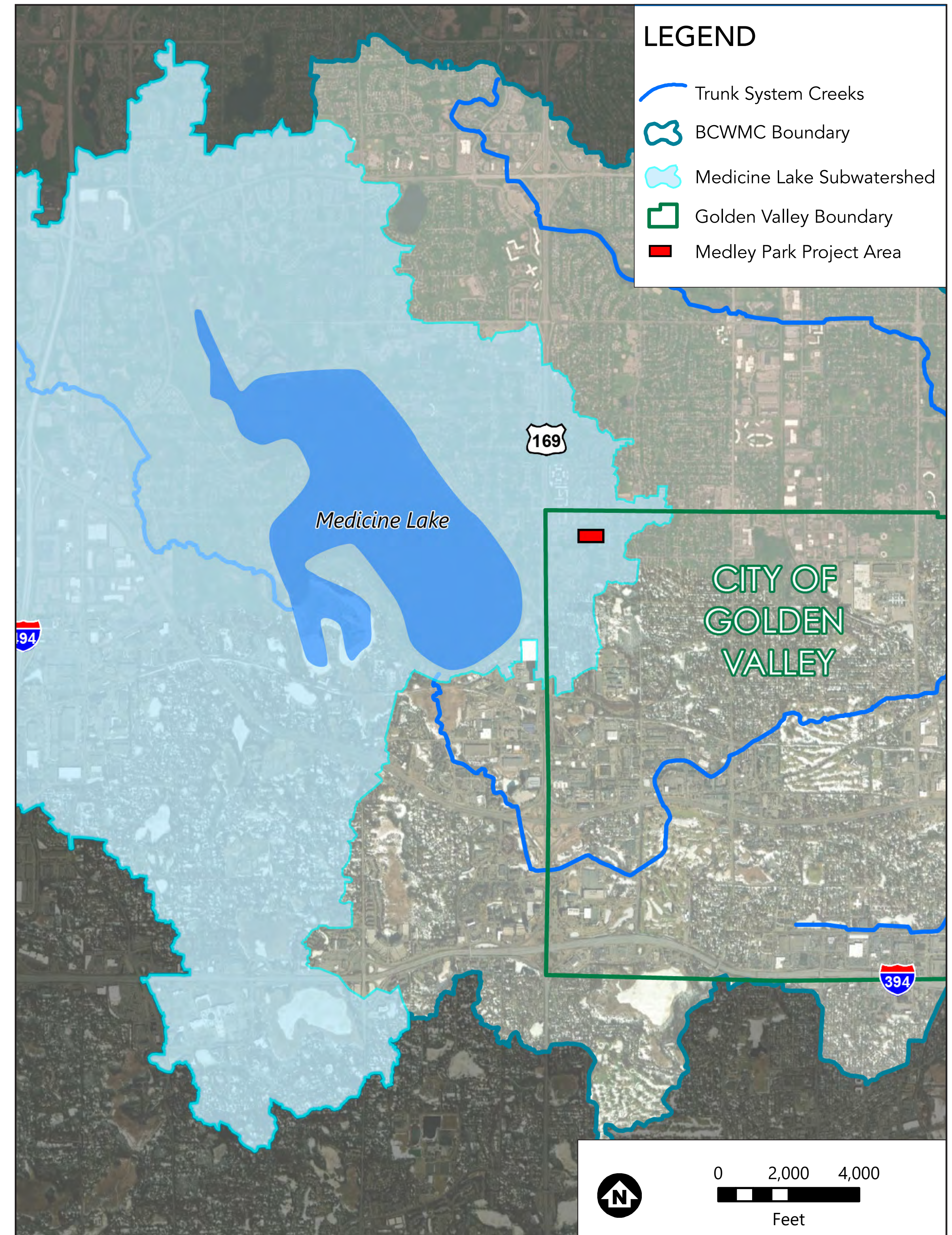
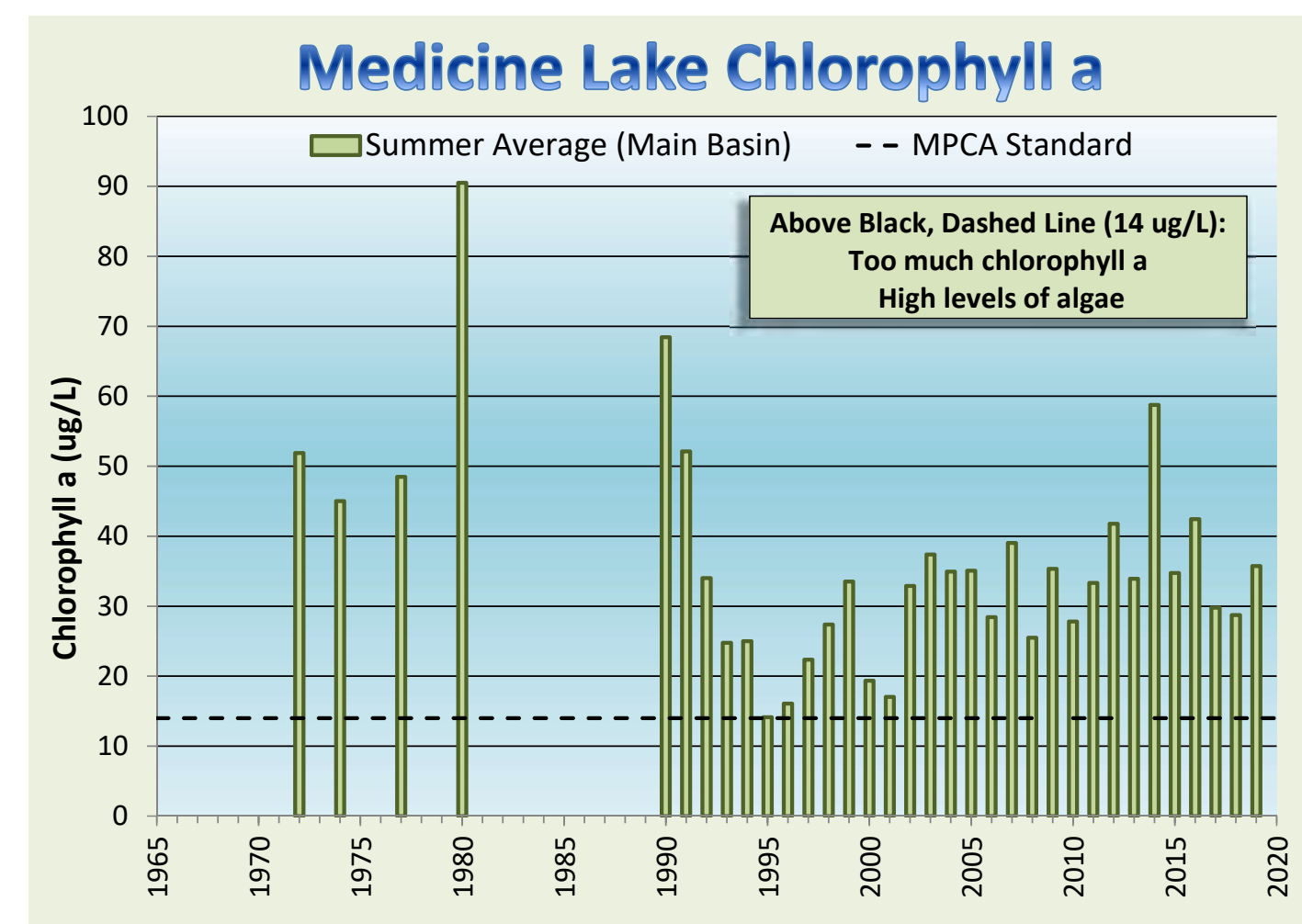
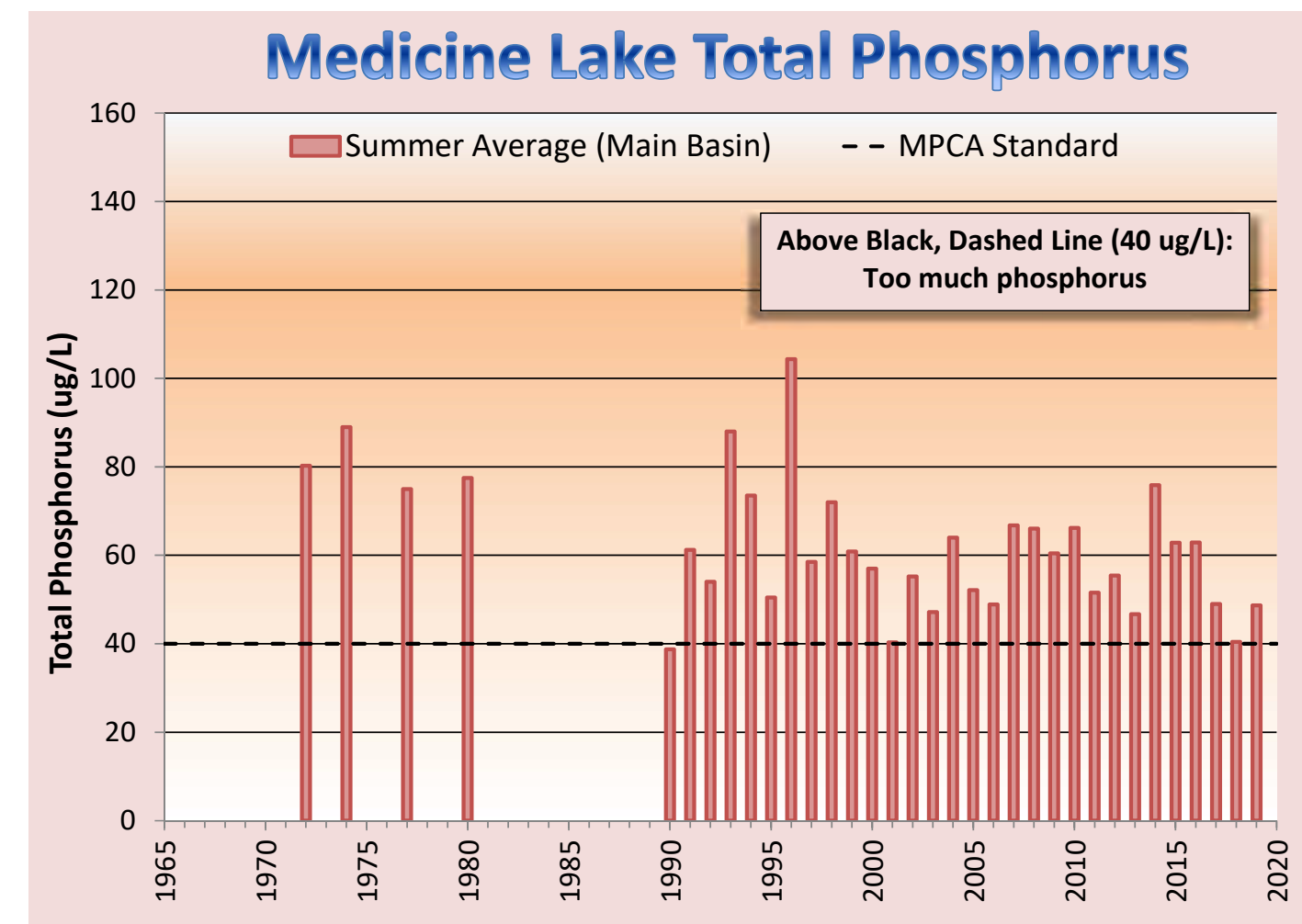
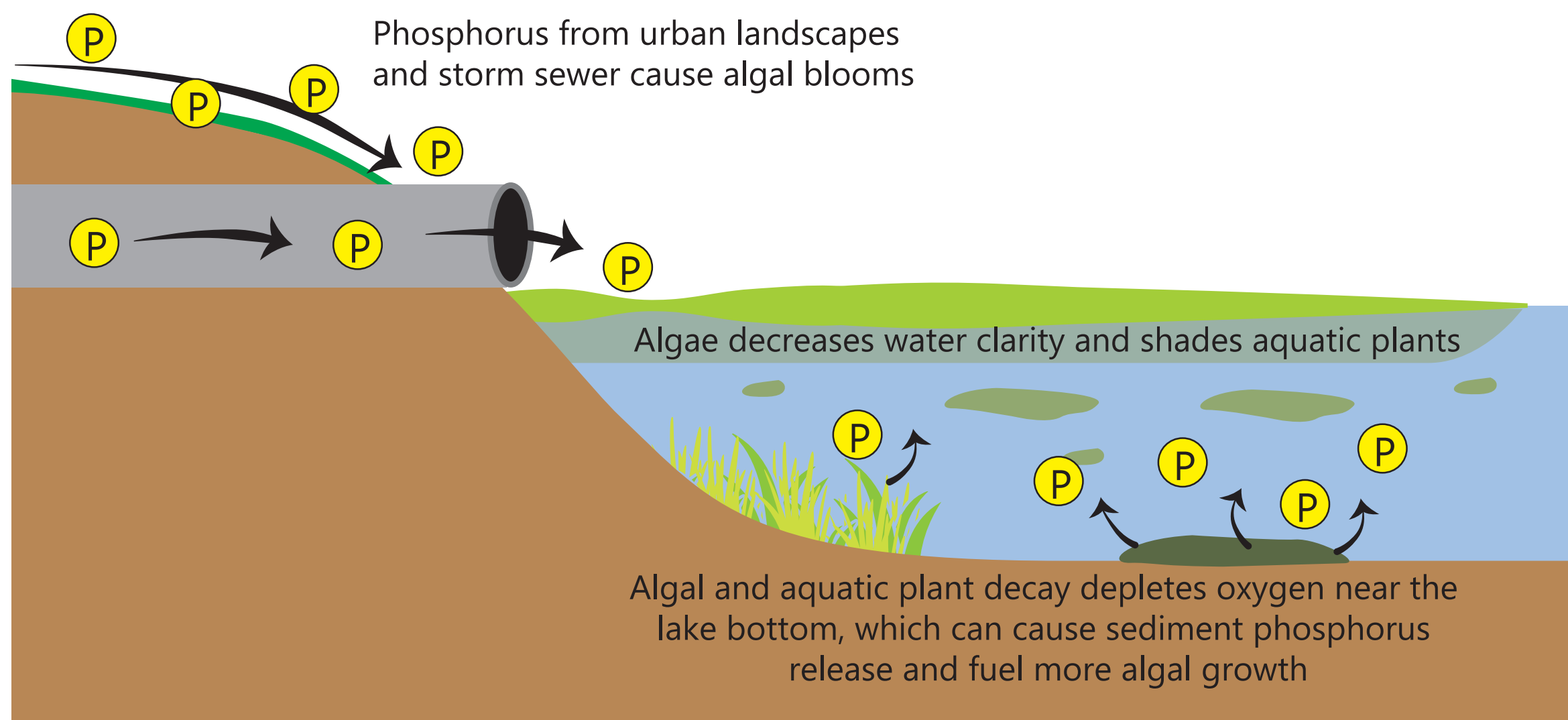


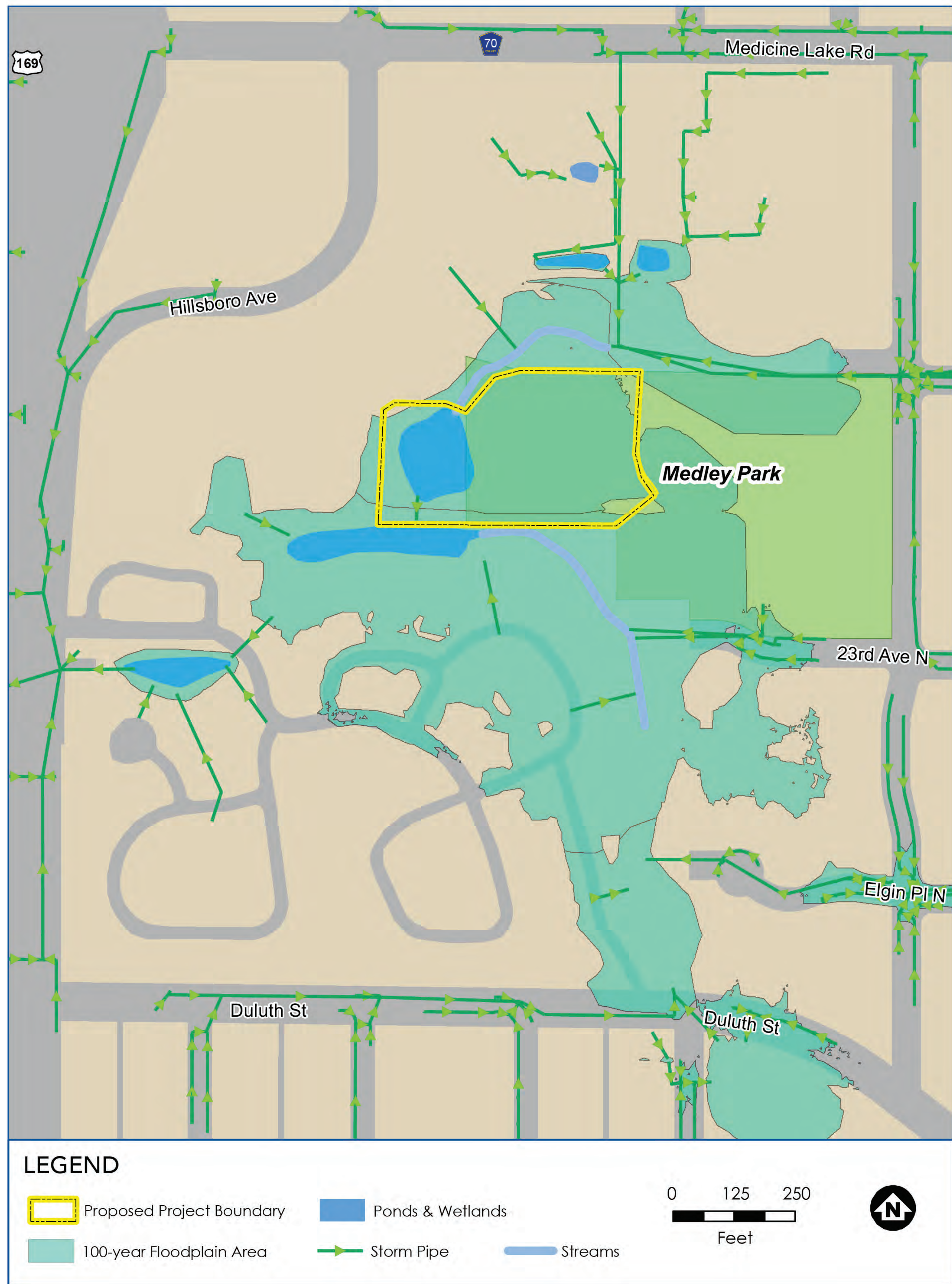
# Medley Park and its connection to Medicine Lake

Medley Park lies within the subwatershed of Medicine Lake, meaning the water that flows out of Medley Pond and water that runs off parkland and surrounding neighborhoods eventually finds its way into Medicine Lake.

- Water quality in Medicine Lake is considered “poor” due to excess nutrients (phosphorus) and does not meet state standards.
- Over the past 20 years, phosphorus concentrations and algae levels have risen in the lake, impacting recreation and aquatic life.
- High phosphorus levels spur algae growth in the lake. It enters the lake from outside sources (storm sewers and shorelines) and from within the lake (plant decay and sediment release).
- BCMWC and Cities with areas draining to Medicine Lake (such as Medley Park) are installing stormwater treatment facilities to reduce pollutants reaching Medicine Lake.



# Flooding and water quality concerns in and around Medley Park

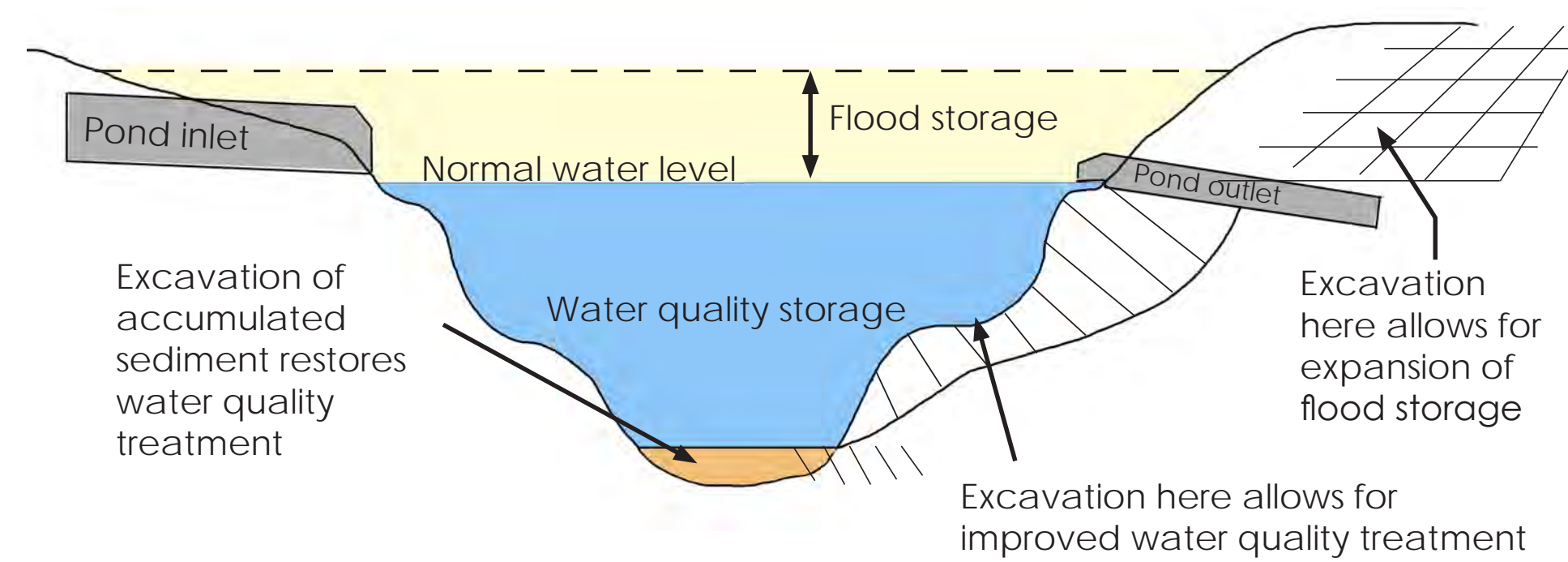


The existing stormwater ponds within the park currently provide some water storage for flood protection. However, when the capacity of these existing ponds fill with stormwater runoff, any additional water will start to expand outside of the park boundaries into residential and commercial areas. This project will study options to expand the flood storage of Medley Pond to reduce the flood inundation area during large storm events. Expanding flood storage and adding mechanisms to treat stormwater will also improve water quality, not only in Medicine Lake, but for Medley Pond and downstream stormwater ponds as well.

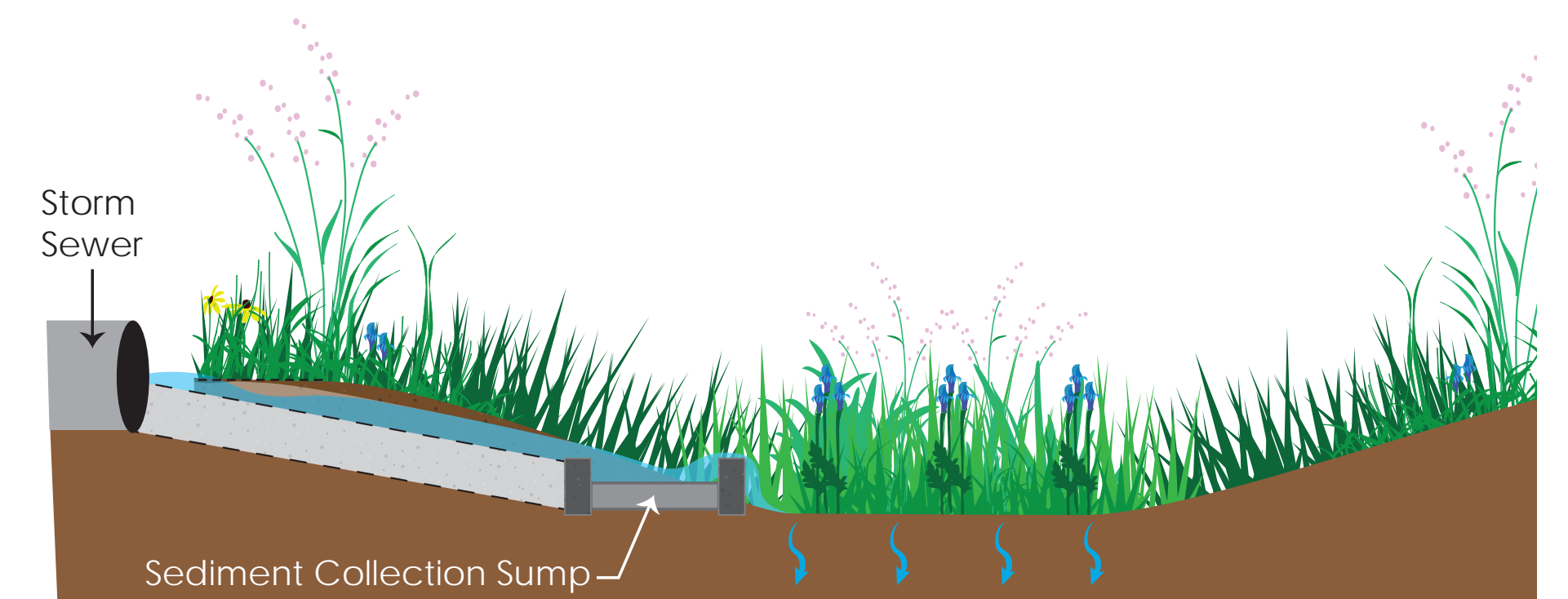


Images of Medley Pond and Medley Park

**How do you create flood storage and water quality treatment? Here are a few examples.**



Both water quality and capacity improvements can be accomplished in existing ponds through excavation.



If conditions are right, rain gardens or biofiltration basins can be constructed to infiltrate/ filtrate pollutants from stormwater runoff. This improves the water quality of the stormwater that is discharged downstream to waterbodies, such as Medicine Lake.

# About the Bassett Creek Watershed Management Commission (BCWMC)

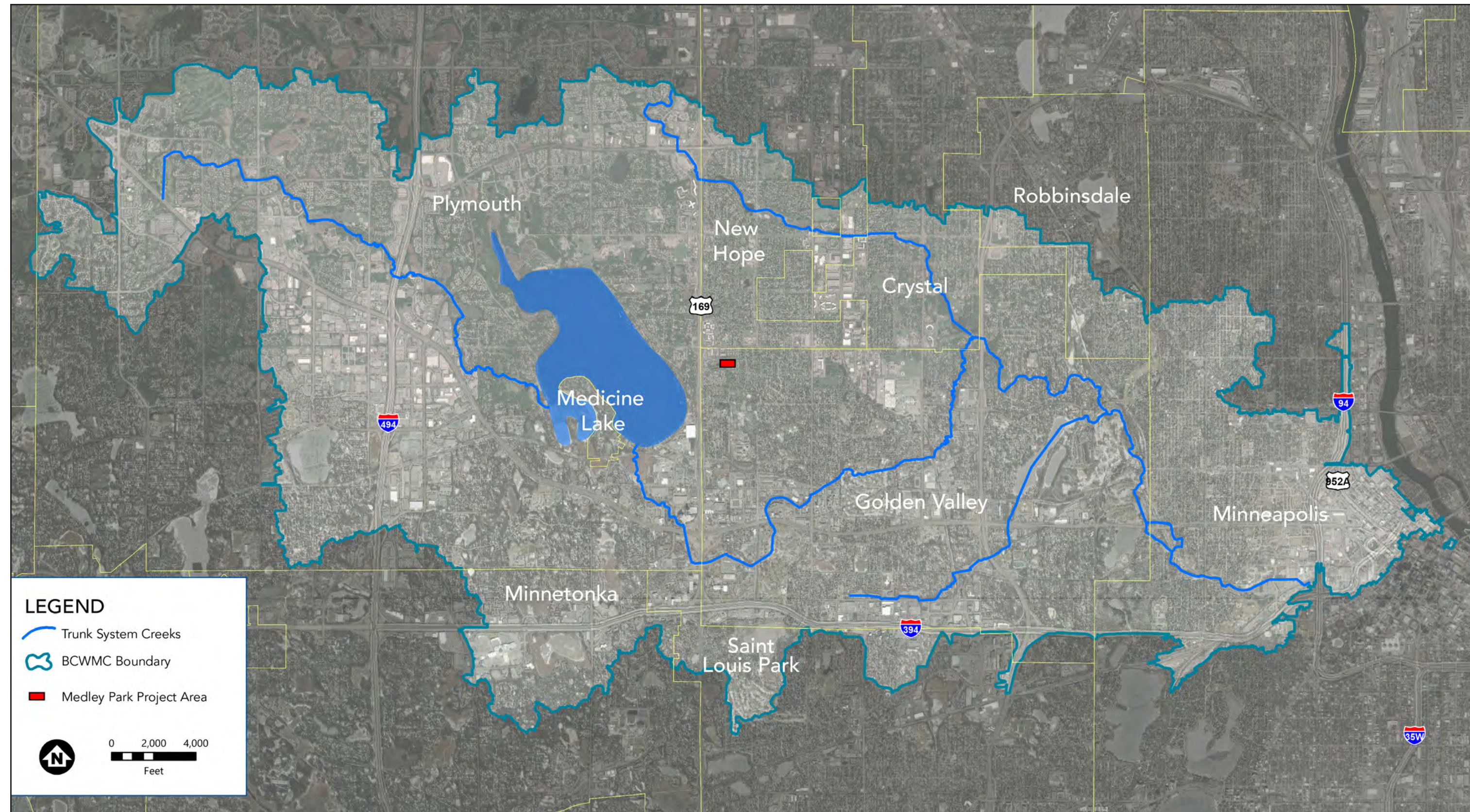
**The vision:** stewardship of water resources to protect and enhance our communities

BCWMC was formed in 1969 to focus on flood control along Bassett Creek. Now operating under the 1982 Metropolitan Surface Water Management Act, BCWMC continues to provide flood management and works to improve and protect water quality in lakes and creeks throughout the 40 square mile watershed.

## BCWMC and City Partnerships

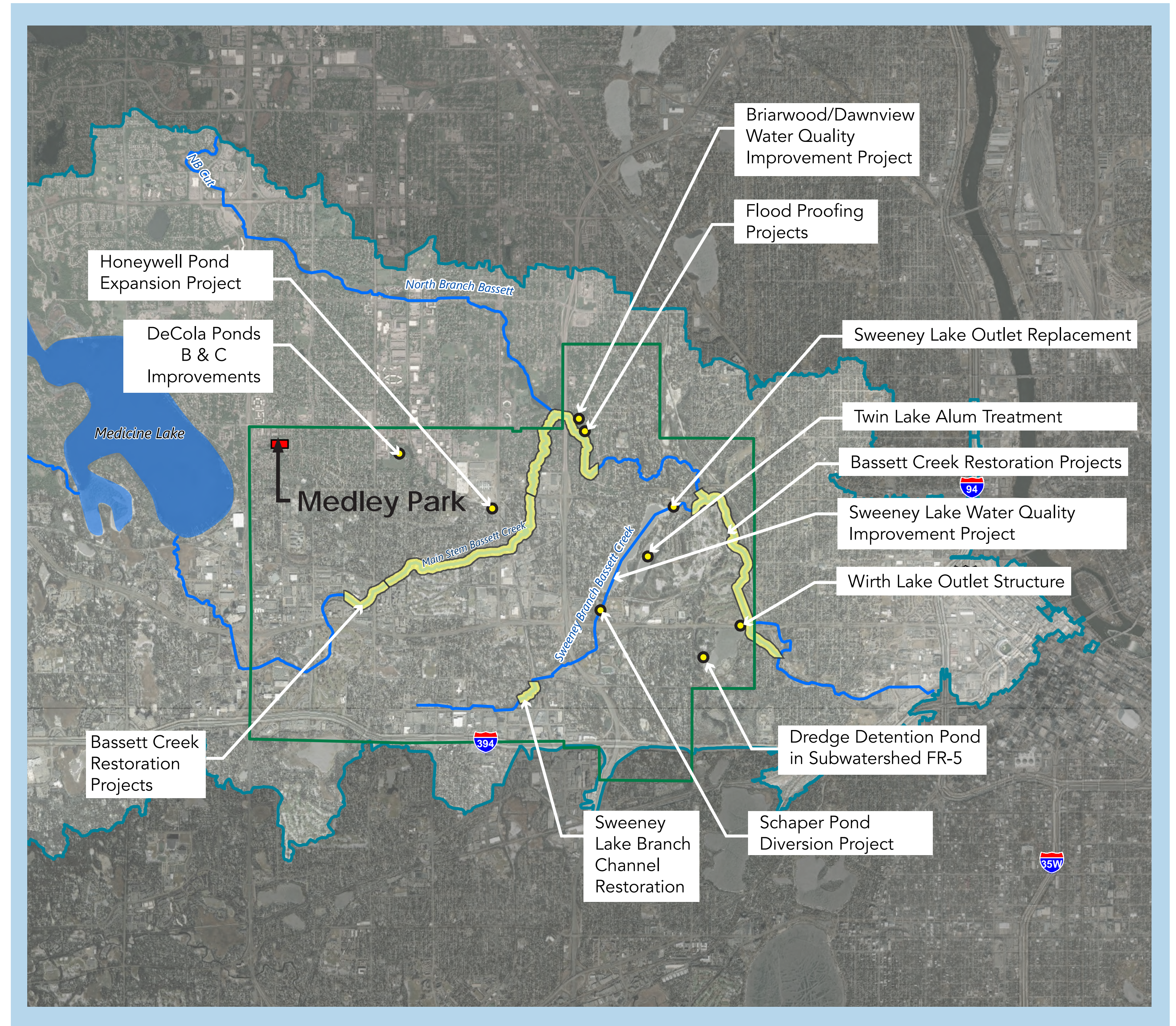
Utilizing contributions from member cities, Hennepin County tax levies, and grant funds, BCWMC works with Golden Valley and other member cities to:

- Implement capital improvement projects that reduce flooding and improve lakes, streams, and wetlands throughout the watershed
- Monitor water quality, perform studies, map resources
- Provide water resource education
- Provide watershed-wide coordination of activities and watershed "point of contact" for all stakeholders

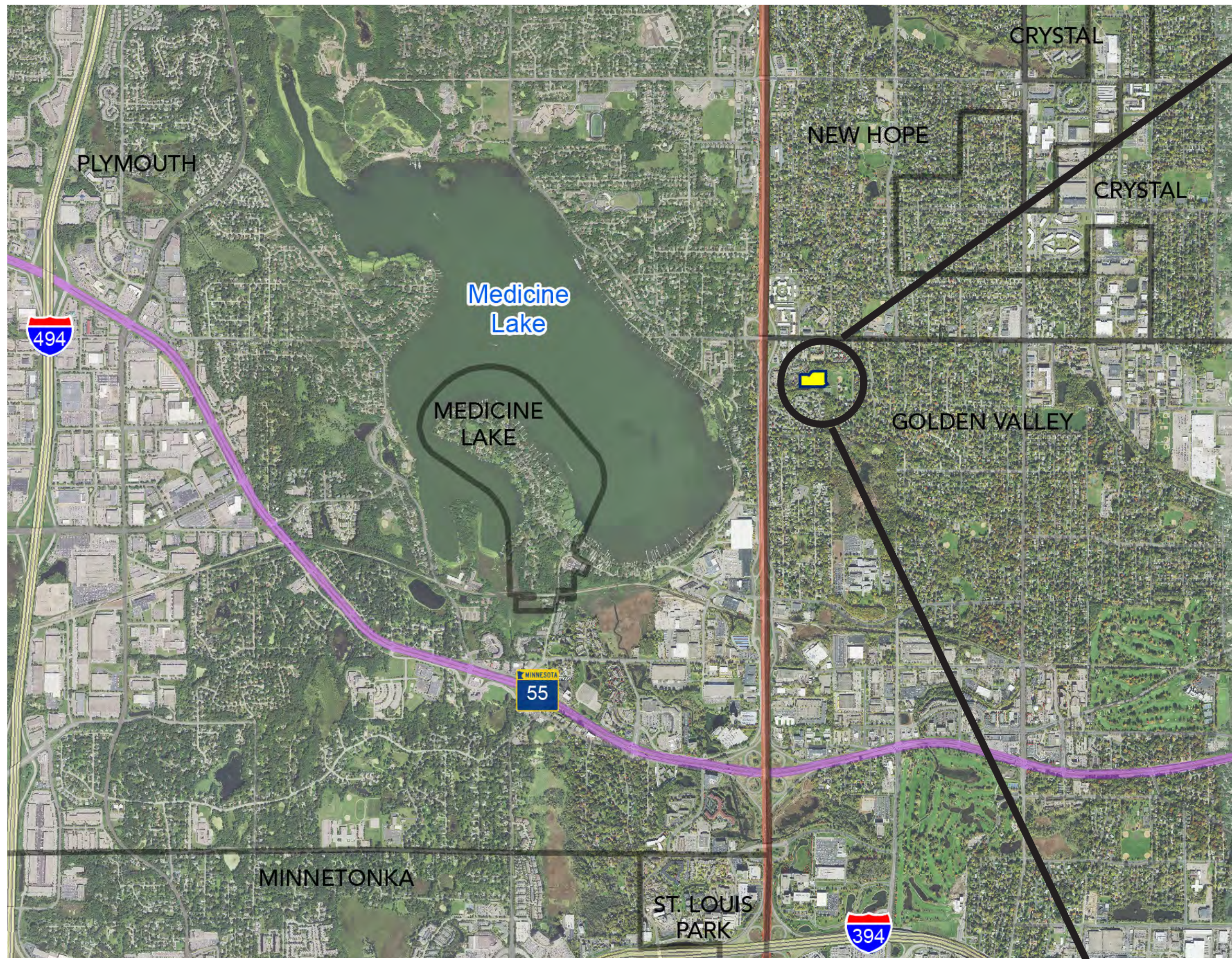


Golden Valley along with Minneapolis, Plymouth, Crystal, New Hope, Robbinsdale, St. Louis Park, Minnetonka, Medicine Lake make up the nine member cities included in the BCWMC.

## BCWMC Projects in Golden Valley

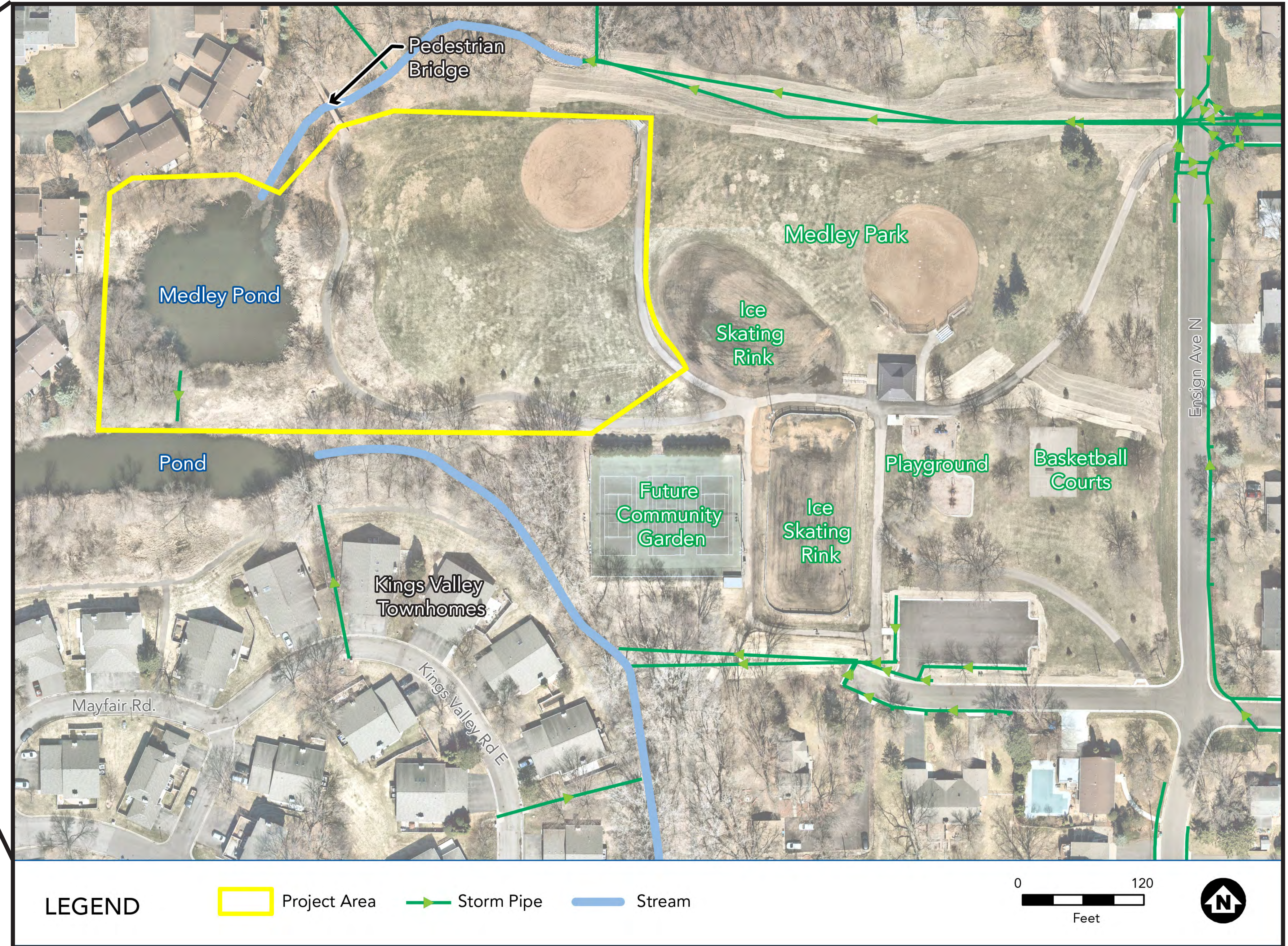


# Medley Park provides opportunities to enhance stormwater management



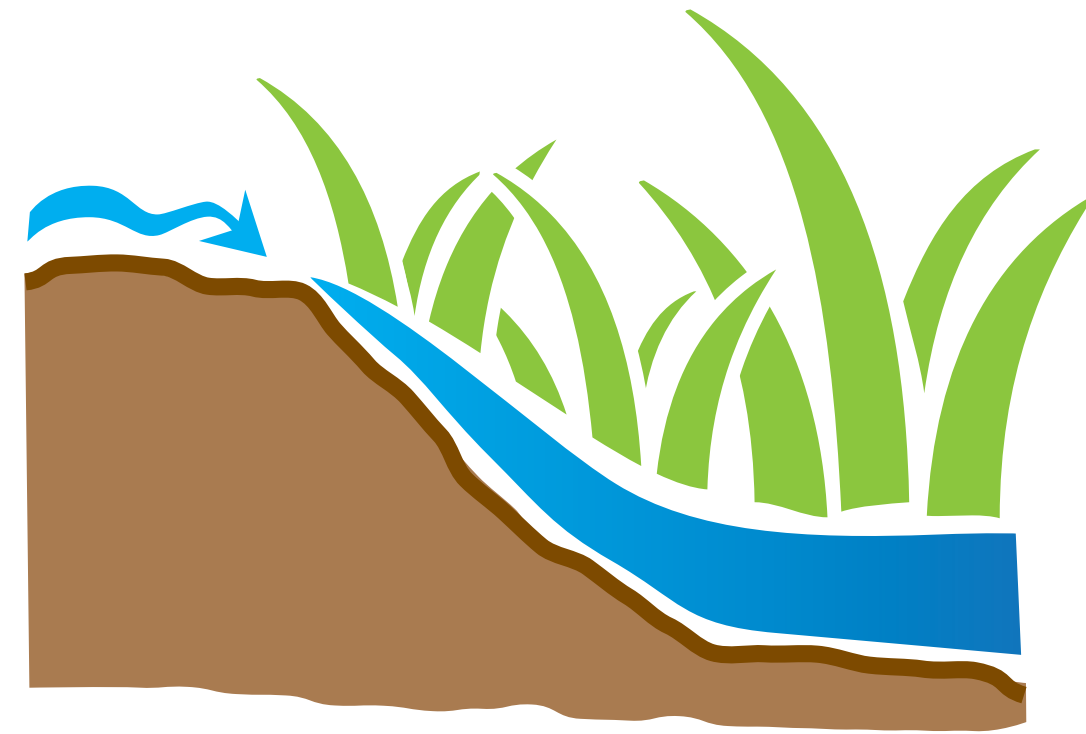
## How can changes to Medley Park benefit the community?

- By repurposing unprogrammed and underutilized park space, it is possible to reduce flooding in the surrounding neighborhoods.
- Stormwater ponds and water quality treatment facilities such as biofiltration basins, improve downstream conditions by capturing stormwater pollutants. Stormwater treatment facilities in Medley Park can help to improve the water quality conditions of the stormwater ponds downstream all the way to Medicine Lake.
- New park amenities can be incorporated into the stormwater treatment design to enhance park user experiences.

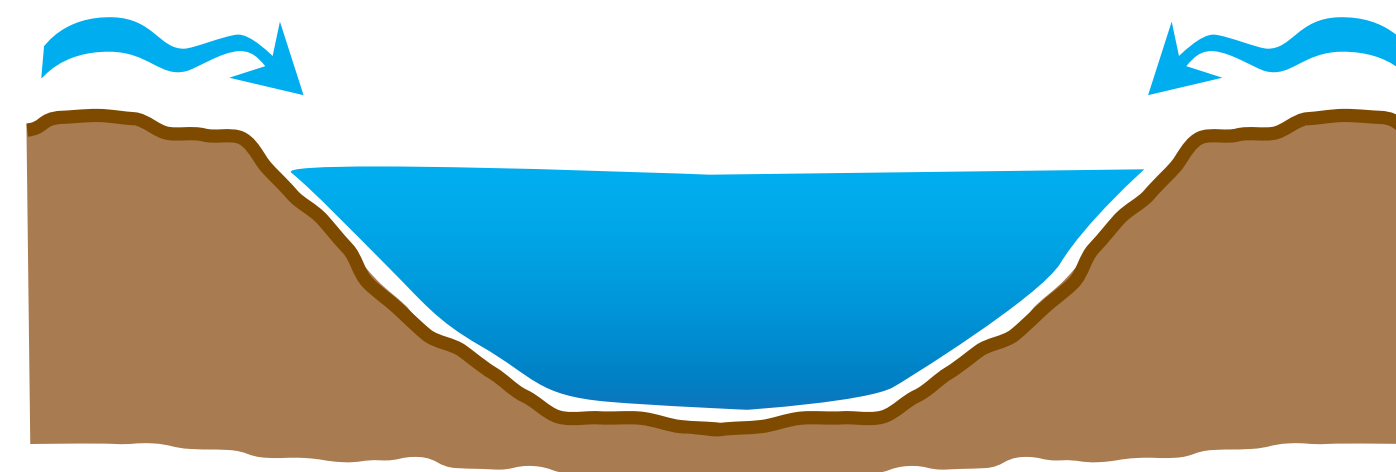


# Medley Park stormwater treatment facility features and timeline

Stormwater treatment concepts being considered will not only provide much needed flood mitigation and water quality treatment in the area, but will provide an opportunity to enhance Medley Park with new ecological and educational amenities. Features at the park could include:



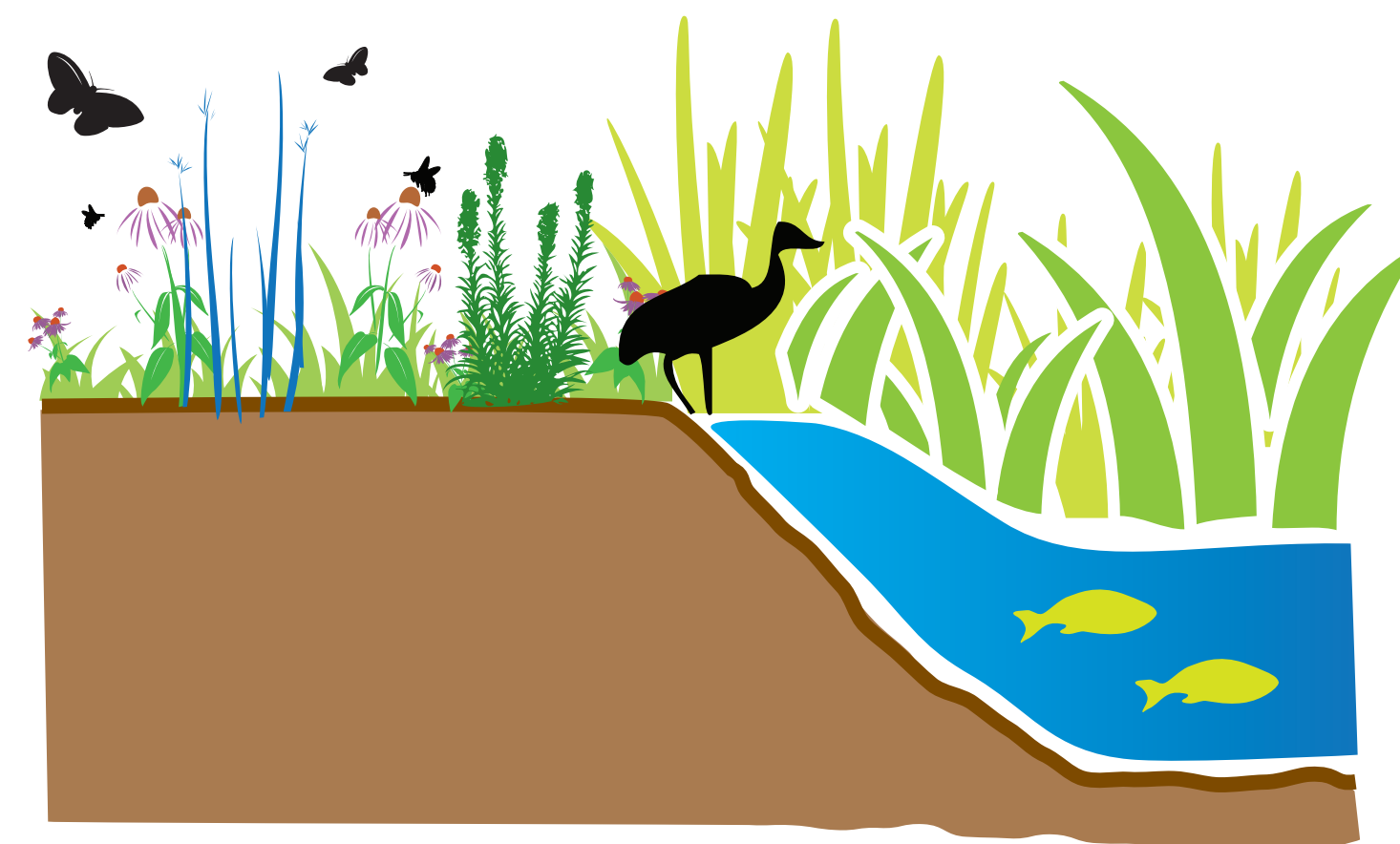
Water Treatment



Stormwater Collection



Interactive Features



Habitat Restoration



## We want to hear from you!

Please take the time to take our survey at: [www.goldenvalleymn.gov](http://www.goldenvalleymn.gov). For additional feedback, please contact Eric Eckman at the City of Golden Valley, 763-593-8084 or by email at [eckman@goldenvalleymn.gov](mailto:eckman@goldenvalleymn.gov), or Laura Jester at The BCWMC, 952-270-1990 or by email at [laura.jester@keystonewaters.com](mailto:laura.jester@keystonewaters.com).

## Study Timeline

