

# Bridging the Gap

Serving People and Improving Water  
Quality in Bassett Creek Valley



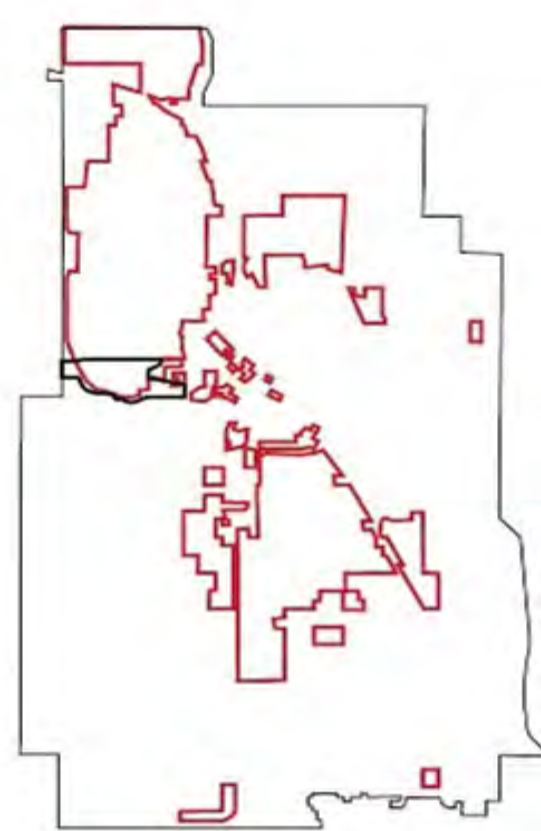
BRING THE  
CHANGE  
BEE THE  
CHANGE

#LAWNS2LEGUMES

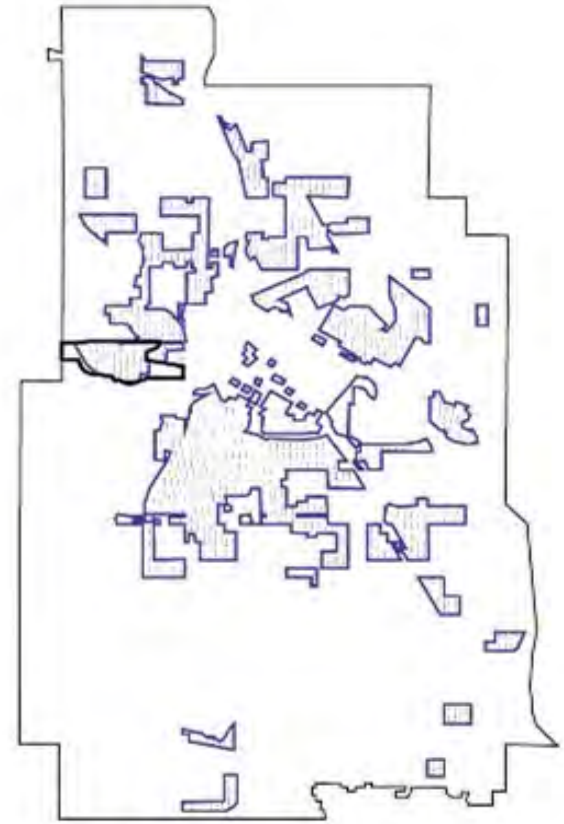


# Environmental Injustice

- **Chronic Stressors:** brownfields, floodplains, high unemployment, homelessness, climate change, competing interests, access to Bassett Creek
- **Acute Shocks:** COVID, loss of tree canopy, development
- **Minneapolis Promise Zone:** encompasses much of Bassett Creek Valley. High unemployment, gun violence, housing blight, and poor educational outcomes

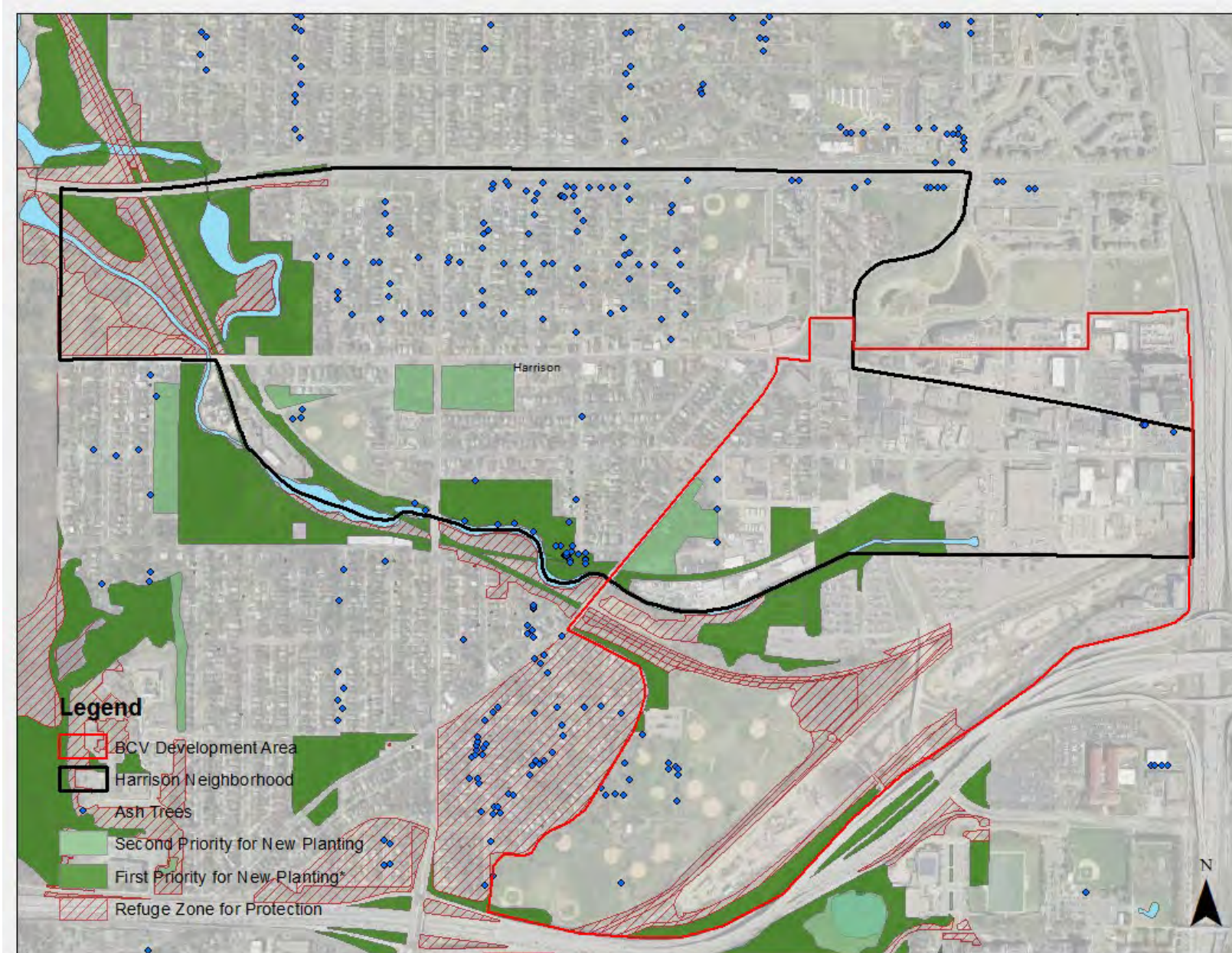


People of Color > 45%



Households in Poverty

# High Quality Habitat Corridors

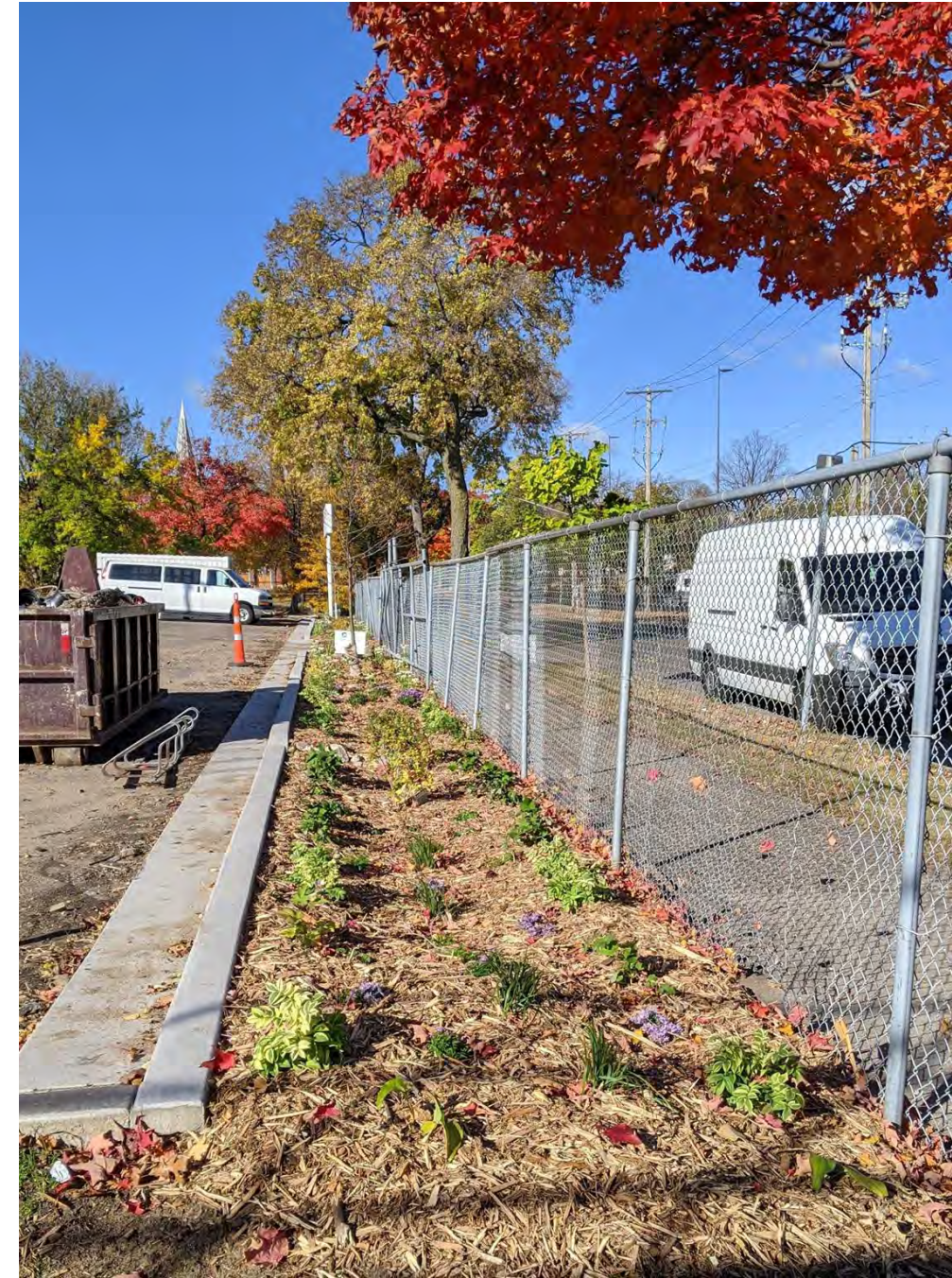


# An Eco Mosque: Masjid An Nur

## Environmental Outcomes:

- 13 raingardens: 2,127 sq ft
- 3 infiltration columns
- 1,485 sq ft perennial plantings
- 2,861 sq ft bee lawn
- 988 sq ft permeable pavement
- 1 pretreatment structure
- 9 pollinator friendly trees

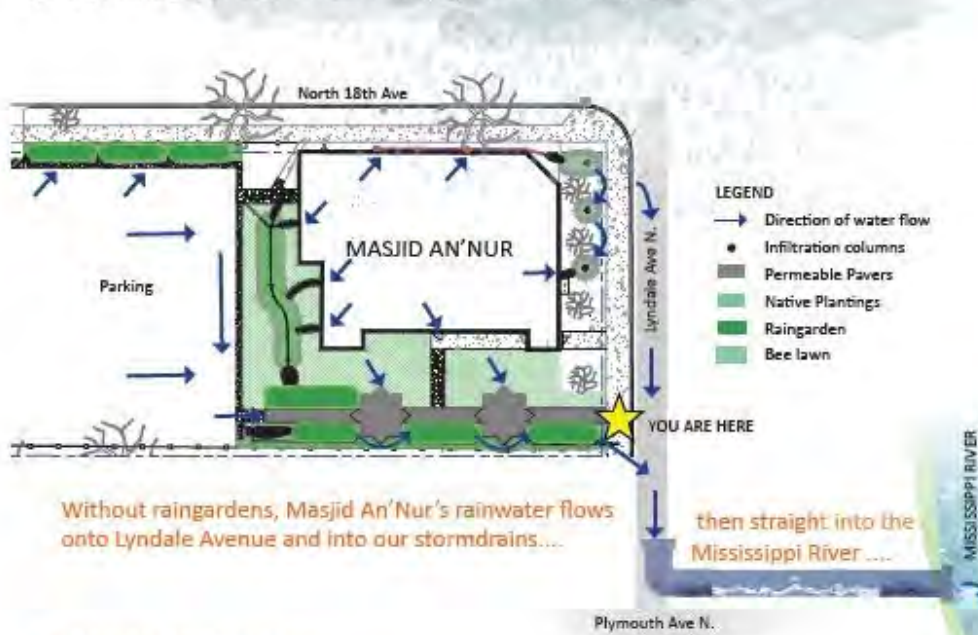
**Treating stormwater  
from 23,771 sq ft of  
impervious surface**



# WELCOME TO OUR Eco-Mosque!

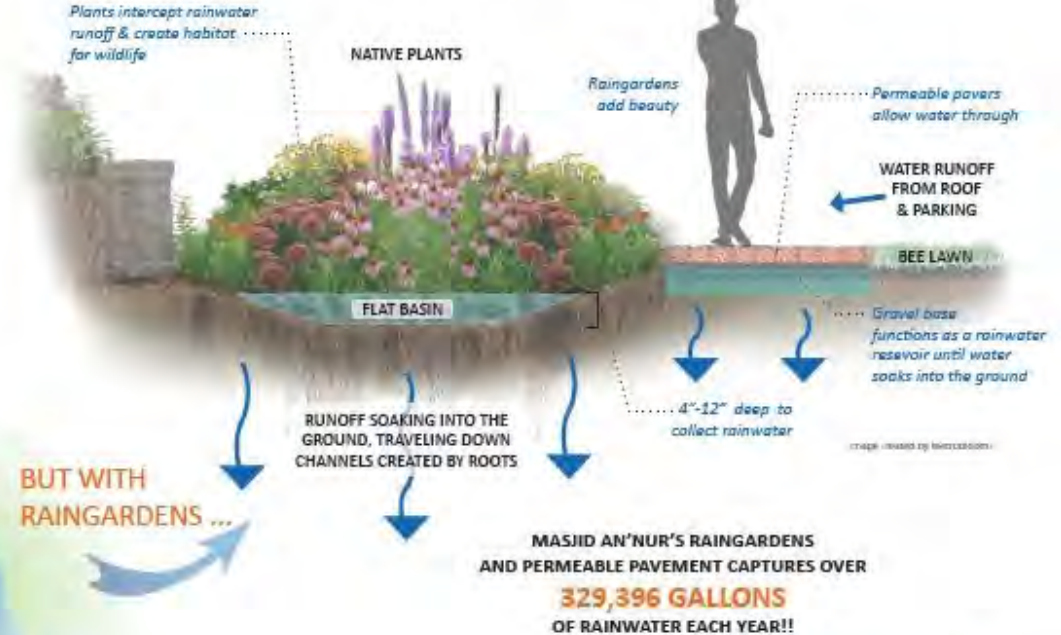
## WE CREATE HEALTHY SPACES FOR ALL LIFE

Most rainwater flows from roofs and parking lots into the road, gathering any pollutants and debris in its path. It then pours into our storm sewers, picking up speed, finally dumping the collection of materials into our lakes and rivers! But here at Masjid An'Nur raingardens and permeable pavers clean our rainwater after it flows off our roof and parking lot. Our bee lawn and native plantings provide pollinator habitat. Trees, seating and open gathering spaces give our community a cool, vibrant place to meet.



## WHAT DOES A RAINGARDEN OR PERMEABLE PAVEMENT DO?

Raingardens are bowl-shaped, shallow gardens built to capture rainwater runoff from roofs, lawns and parking lots before it reaches our waterways. It treats water by settling, filtering pollutants, providing us with clean water! Similarly, permeable pavement allows rainwater to soak into the spaces between the pavers and store it in a reservoir below made of gravel until the water can soak into the ground.



## CAN YOU FIND THESE NATIVE PLANTS?



THAT'S OVER **45 SCHOOL BUSES** OF RAINWATER!!



# Community Engagement: All Nations Church



31.44" Annual Rainfall			
	Runoff	Solids	Po
	Cu Ft	lbs	lbs
Before	7341	79.37	0.280
After	2715	29.33	0.103
<b>Captured</b>	<b>4626</b>	<b>50.04</b>	<b>0.176</b>
<b>%reduct</b>	<b>63.02%</b>	<b>63.05%</b>	<b>63.05%</b>
	<b>34604.89 gallons</b>		

# Training Local Workforce: Regional Apprenticeship and Training Center



# Challenges + Successes

- Participant turnover
  - 14 properties engaged
  - Soil contamination
  - Property sale
- Direct engagement most effective
  - working with Northside residents to recruit
  - meeting projects where they were at
- Flexibility: grant extension and scope increase
- Grant closeout by year end







**Free Gardens**  
FOR RESIDENTS OF HARRISON, JORDAN  
AND WILLARD HAY

---

Call Yordi at 612-558-0865 or  
email at  
[yordanose@metroblooms.org](mailto:yordanose@metroblooms.org)

These plantings provide food for  
pollinators and improve local water  
quality

An illustration of a woman with dark curly hair, wearing a green shirt and blue pants, sitting on a brick porch. She is surrounded by various potted plants and flowers. Butterflies are flying around her. The scene is set against a brick wall and a house in the background.A large, detailed illustration of a bumblebee with yellow and black stripes, sitting on a cluster of purple and yellow flowers.

**m**   
BWSR WATERSHED MANAGEMENT TRUST FUND

your yard  
**CAN BEE**  
the **CHANGE**

#Lawns2Legumes



# Northside Pollinator Project Year in Review: 2020





# Project partners



*Minnesota*  
**INTERFAITH  
POWER & LIGHT**



**Harrison  
Neighborhood  
Association**



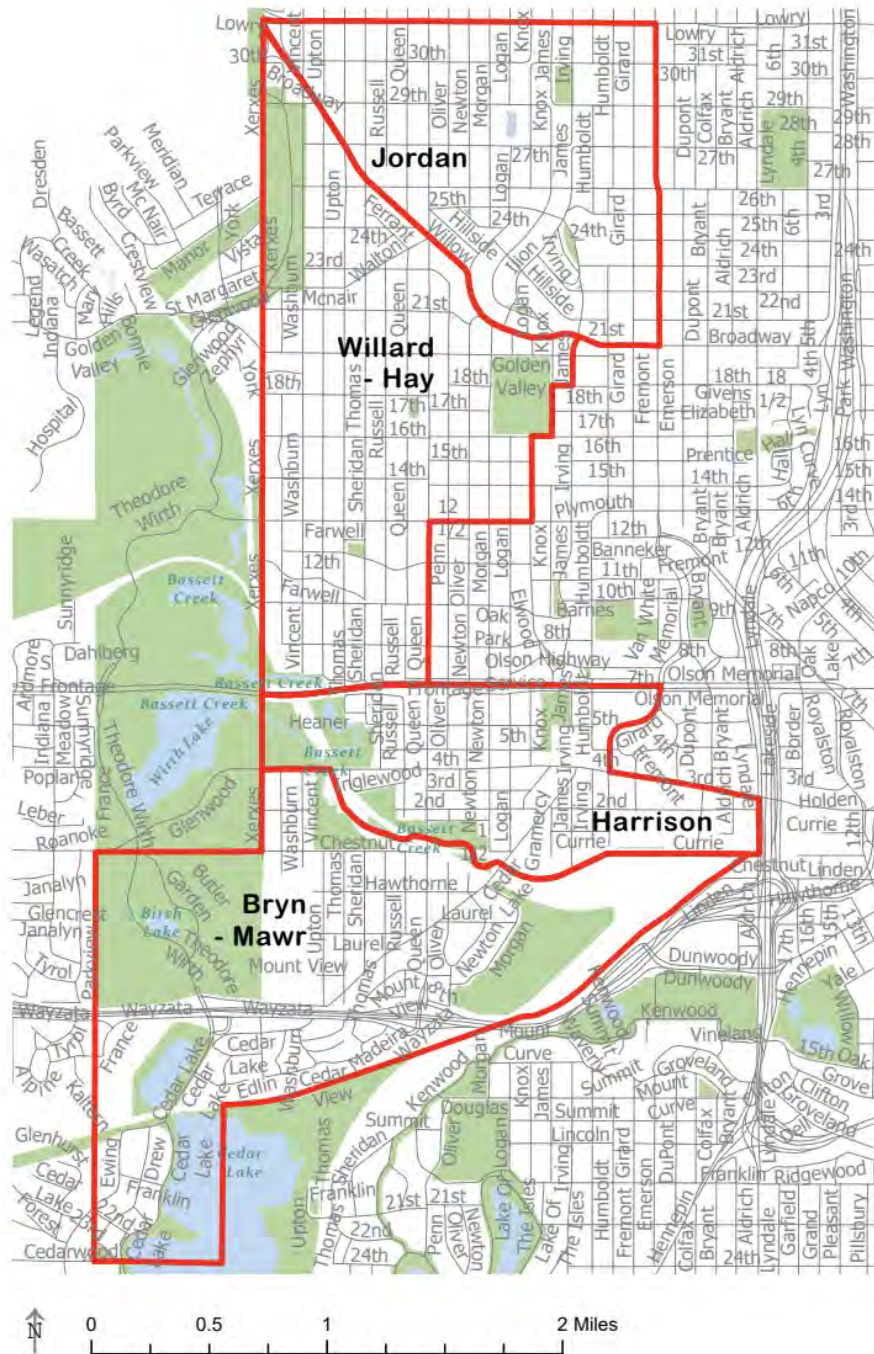
**MISSISSIPPI  
WATERSHED  
MANAGEMENT  
ORGANIZATION**



Planting the Seeds of Change

# Project Background

- Lawns to Legumes program (L2L) launched May 2019
- Pollinator protection (RPBB) + stormwater conservation
- BCWD selected as a demonstration neighborhood in Spring of 2020
- Implement project with a focus on Environmental Justice (EJ)



your yard  
**CAN BEE**  
the **CHANGE**



#Lawns2Legumes

# Overhaul recruitment efforts from 2019

- KISS analysis from 2019 revealed that, despite locating our projects within EJ neighborhoods, project participants were not representative of the community.



# Participant Recruitment

- Emphasis on recruiting residents that are representative of the neighborhood *including renters!*
- Collaborative approach - partner with neighborhood organizations, community leaders, and local interpreters
- Majority of 25 project participants are BIPOC community members

**You can have a FREE  
garden right outside  
your apartment**

BUTTERFLIES| BIRDS| CLEAN WATER

---

Call Yordi at 612.558.0865 or email at [yordanose@metroblooms.org](mailto:yordanose@metroblooms.org)



Joey and Jaiden Ellington, Northside Pollinator Project Block Captains

The **Northside Pollinator Project** aims to replace conventional grass lawns with gardens that will add beauty to the community, clean our water, and protect our bees and butterflies. All residents of the Harrison, Jordan, and Willard-Hay neighborhoods are eligible to participate in this project – INCLUDING RENTERS! Project participants will receive a FREE 75 square foot garden by participating in this project.

Harrison, Jordan, and Willard-Hay are classified as environmental justice (EJ) neighborhoods, or areas that experience harmful environmental conditions but don't have projects in place to address these issues. A focal point of this project will be on equitable engagement, where we are investing resources to recruit project participants that are representative of the area. If you would like to get involved in this project, please select the category that is most applicable to you for additional information.

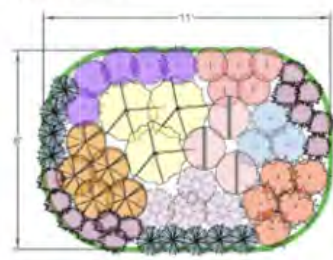
Funding for this project is provided by the Lawns to Legumes program through the Bassett Creek Watershed Management Commission.



**NATIVE GARDEN TEMPLATE**  
SUNNY + 75 SF

Metro Blooms  
651.699.2426  
P.O. Box 17099  
Minneapolis, MN 55417  
www.metroblooms.org

PLANTING PLAN



PLANT LIST

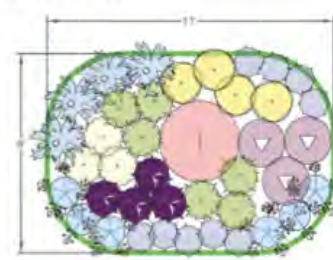
ICON	QTY	COMMON NAME	SCIENTIFIC NAME	HT	SPACING	BLOOM
	13	Prairie Smoke	Geum triflorum	6"-1'	1'	May-July
	9	Wild Lupine	Lupinus perennis	1'-2'	1'	May-July
	5	Butterfly Weed	Asclepias tuberosa	1'-2.5'	18"	June-Aug
	5	Purple Prairie Clover	Dalea purpurea	1'-3'	18"	July-Sept
	5	Black-eyed Susan	Rudbeckia hirta	1'-3'	18"	June-Oct
	5	Columbine	Aquilegia canadensis	2'-3'	1'	May-July
	4	Rough Blazing Star	Liatris aspera	2'-3'	18"	July-Oct
	3	Little Bluestem	Schizachyrium scoparium	2'-4'	18"	Aug-Sept
	3	Wild Bergamot	Monarda fistulosa	4'	2'	July-Sept
	3	Showy Goldenrod	Solidago speciosa	3'-5'	2'	Aug-Oct



**NATIVE GARDEN TEMPLATE**  
SHADE + 75 SF

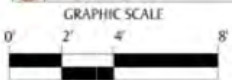
Metro Blooms  
651.699.2426  
P.O. Box 17099  
Minneapolis, MN 55417  
www.metroblooms.org

PLANTING PLAN



PLANT LIST

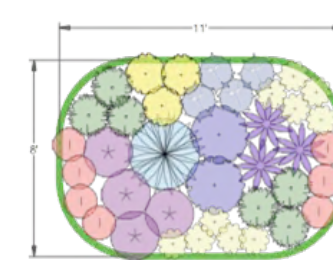
ICON	QTY	COMMON NAME	SCIENTIFIC NAME	HT	SPACING	BLOOM
	9	Wild Blue Phlox	Phlox divaricata	1'	1'	Apr-June
	6	Jacob's Ladder	Polemonium reptans	1'	1'	Apr-June
	6	Palm Sedge	Carex muskingumensis	18"	18"	July-Sept
	4	Big-Leaved Aster	Aster macrophyllus	1'-2'	18"	Aug-Sept
	3	Tall Thimbleweed	Anemone virginiana	1'-2'	18"	June-Aug
	4	Zig Zag Goldenrod	Solidago flexicaulis	1'-3'	18"	Aug-Oct
	3	Foxglove Beardtongue	Penstemon digitalis	2'-4'	18"	May-June
	4	American Bellflower	Campanulastrum americanum	2'-4'	18"	July-Sept
	1	Spikenard	Atalia racemosa	3'-7'	2'	July



**NATIVE GARDEN TEMPLATE**  
SUNNY & WET + 75 SF

Metro Blooms  
651.699.2426  
P.O. Box 17099  
Minneapolis, MN 55417  
www.metroblooms.org

PLANTING PLAN



PLANT LIST

ICON	QTY	COMMON NAME	SCIENTIFIC NAME	HT	SPACING	BLOOM
	7	Prairie Smoke	Geum triflorum	8"	1'	April-May
	10	Prairie Coreopsis	Coreopsis palmata	1'-2'	1'	June-Aug
	6	Sweetgrass	Hierochloa odorata	2'	18"	May-July
	3	Golden Alexanders	Zizia aurea	3'	18"	April-June
	4	Sky Blue Aster	Symphotrichum oolentangiense	3'	18"	Aug-Oct
	4	Swamp Milkweed	Asclepias incarnata	4'	2'	July-Aug
	3	Purple Coneflower	Echinacea purpurea	2'-5'	2.5'	June-Aug
	1	Blue Wild Indigo	Baptisia australis	3'-4'	3'	May-June
	2	Purple Giant Hyssop	Agastache scrophulariifolia	4'-6'	1'	July - Oct



# Connecting residents with Green Infrastructure experts

- Metro Blooms Landscape Designers develop plant palettes for residents
  - Pollinator-friendly species
  - Staggered bloom times
- Fully adapted to site conditions



# Pollinator-friendly trees and shrubs

- Easy to maintain
- Early season burst of blooms for pollinators

Serviceberry 'Autumn Brilliance'



Eastern redbud



Eastern red cedar



Smooth sumac





# Accessibility for renters

Native garden plantings may impose inherent hurdles for renters

- No green space for installation
- Communication difficulties with landlord
- Desire to keep plantings upon moving



Developed a raised garden planter template specifically for renters

- 6 native flowers
- staggered bloom times
- diverse colors
- easy to transport



# Connecting residents with Green Infrastructure experts

- Site consultations to collaboratively select planting type & location
- Sustainable landcare webinar to ensure longevity of projects
- Build community capacity by providing



# By the numbers

- 52 properties engaged
- 3 Neighborhood Associations engaged, 2 took lead on engagement
- 5 renters participated
- 7 paid community project stewards (3 youth community stewards who served as liaisons)



# By the numbers

- 21 native gardens
- 4 raised garden planters
- 1500+ square feet of pollinator habitat
- 36 wildflower species planted
- 48 native trees and shrubs



# Lessons Learned

- *Invest* in creating partnerships with local community leaders
- Engagement takes time, so start as early as possible
- Equitable compensation is one way to close disparity, but it's not the only one



James Wolfin

Sustainable Landcare Manager

[james@metroblooms.org](mailto:james@metroblooms.org)

Yordanose Solomone

Director of Equitable Engagement

[yordanose@metroblooms.org](mailto:yordanose@metroblooms.org)

Laura Scholl

Metro Blooms Associate Director &

Director of Development

[laura@metroblooms.org](mailto:laura@metroblooms.org)

[metroblooms.org](http://metroblooms.org)

Artwork: Katie Sartore Duchene

