



October 2020

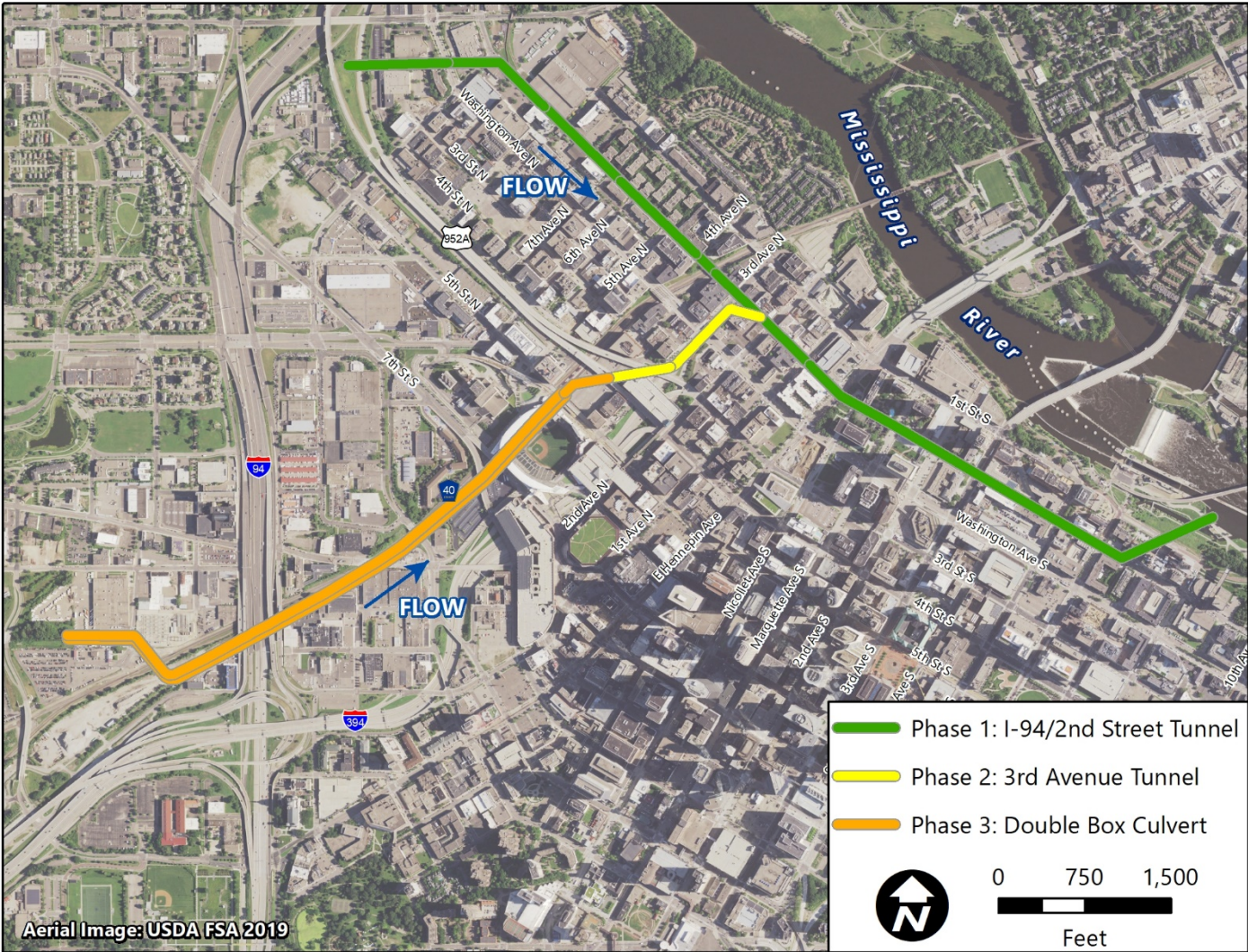
Bassett Creek FCP: Deep Tunnel Inspection



Prepared for Bassett Creek Watershed
Management Commission



Bassett Creek Tunnel System

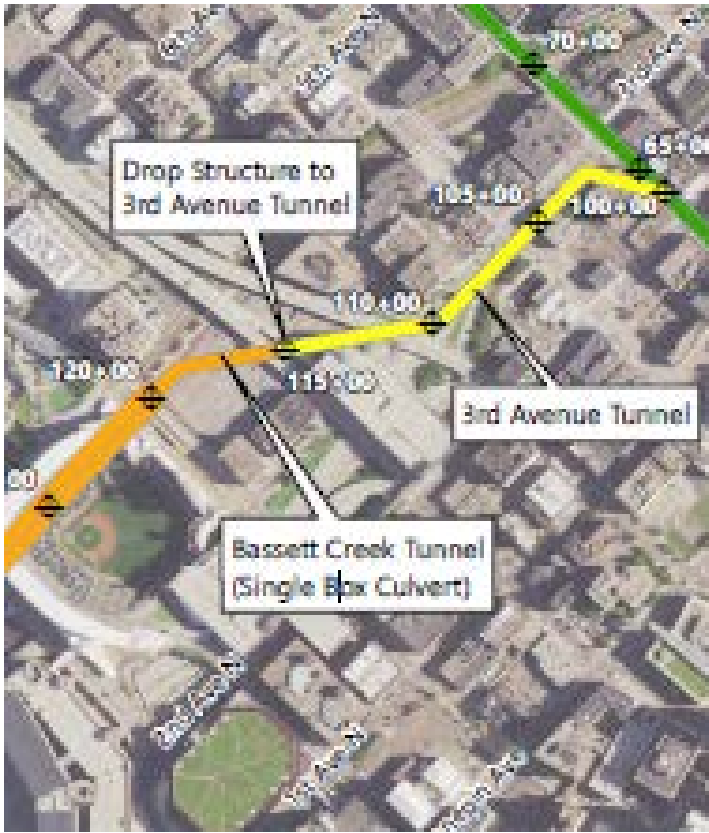


Phase 1 Deep Tunnel: I-94/2nd Street Tunnel Constructed by MnDOT - 1979



- 4,673 ft. long - Bassett
- 8,900 ft. total - MnDOT
- 60-100 ft. below ground
- flared end outlet str.
- 12' diameter section
- 15.5' high x 10' wide cathedral arch

Phase 2 Deep Tunnel: 3rd Avenue Tunnel Constructed by USACE -1990



- 1,456 ft. long
- 60-80 feet below ground
- 15' high x 10' wide cathedral arch
- 30' drop structure

Tuesday inspection access – 2nd street tunnel



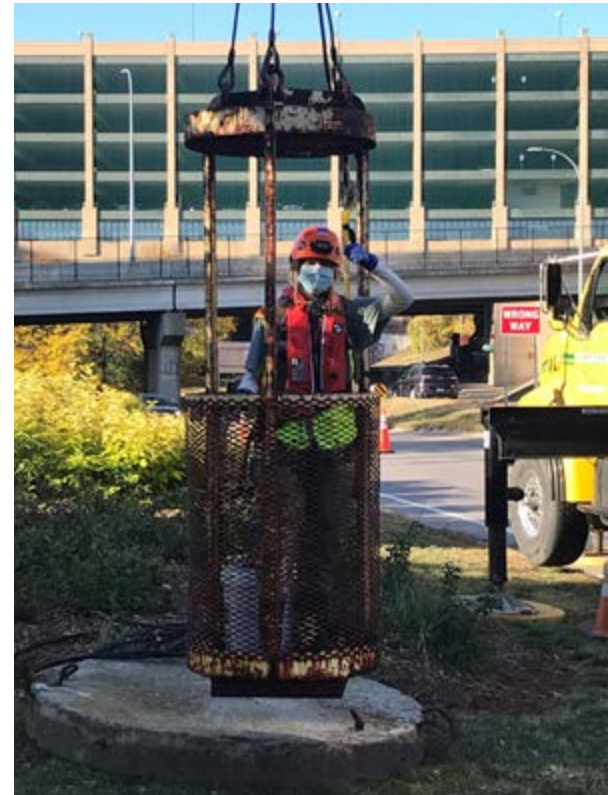
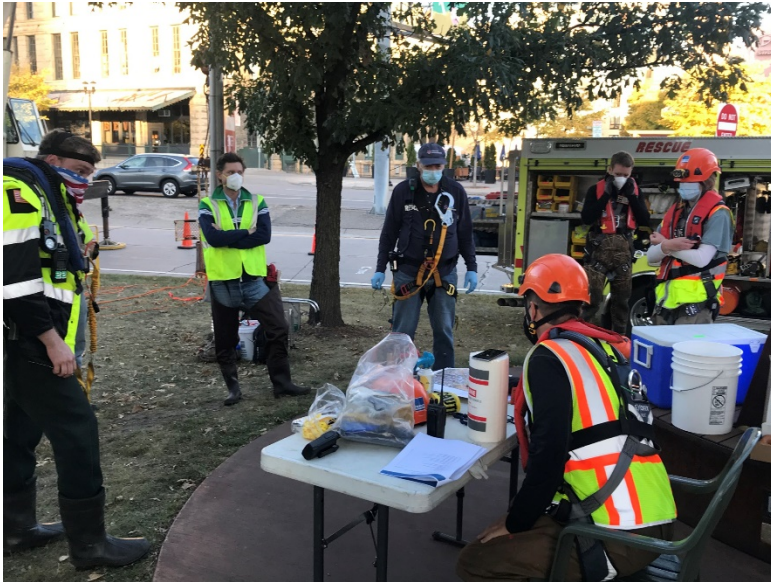
Tuesday inspection access – 2nd street tunnel



Tuesday inspection access – 2nd street tunnel

- Show drone video

Wednesday inspection access – 3rd ave. tunnel



Wednesday inspection access - video



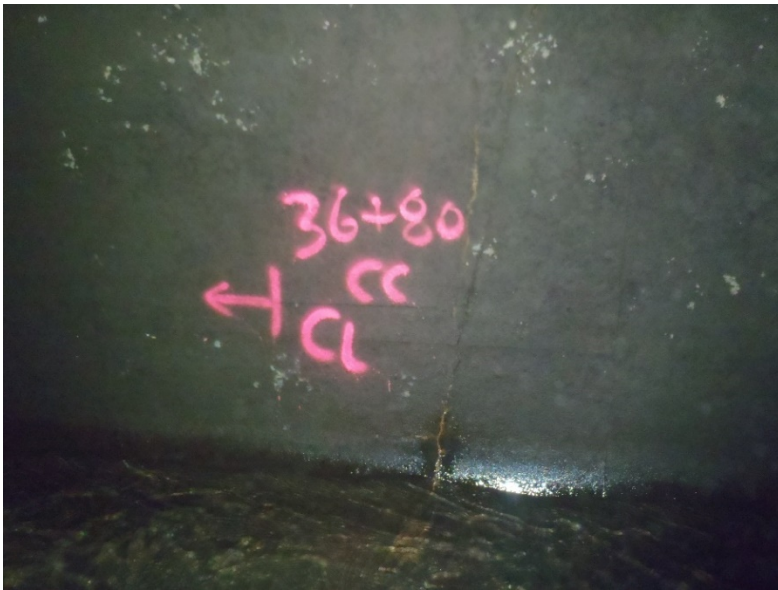
2nd street tunnel



2nd st./3rd Ave./I-94 tunnel "Y" junction



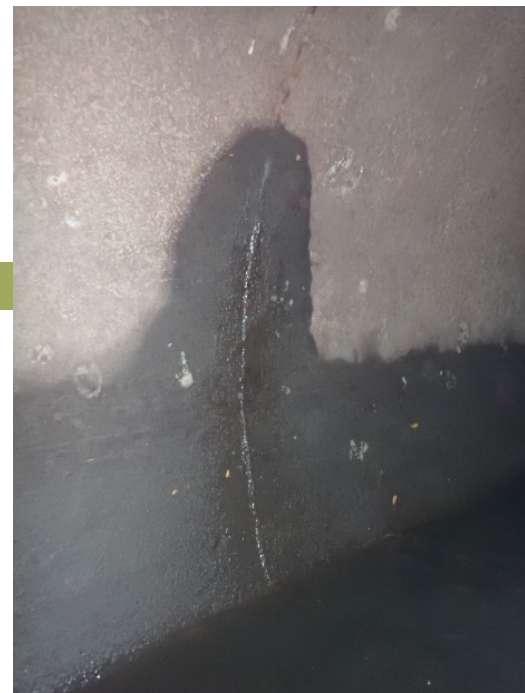
defects – cracks/fractures



defects – infiltration



infiltration stain



infiltration dripper



infiltration weeper



infiltration runner

defects – infiltration gusher



infiltration gusher – video 1

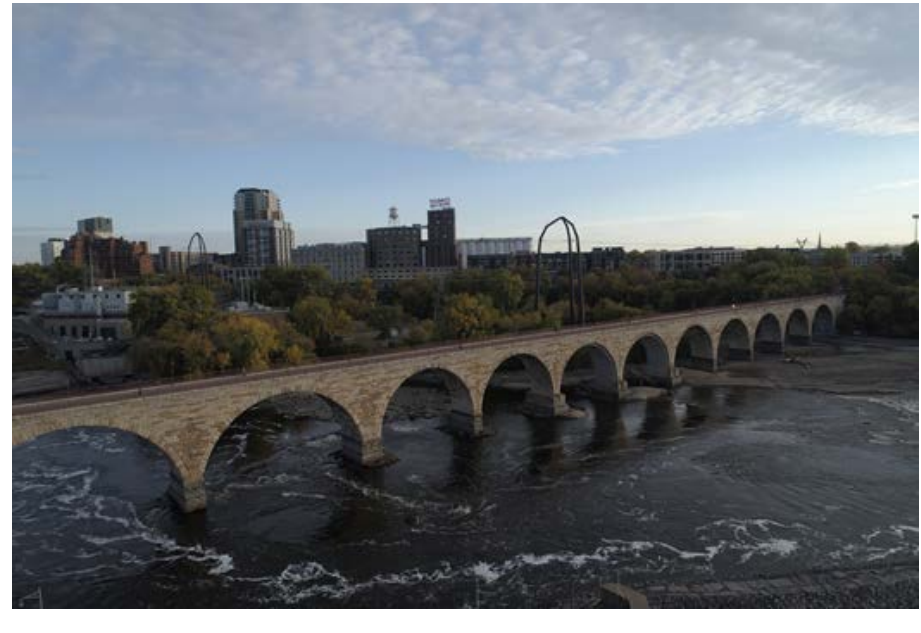


infiltration gusher – video 2



defects - deposits





Mississippi River middle pool





Questions

June 2020

Bassett Creek FCP: Deep Tunnel Inspection



Prepared for Bassett Creek Watershed
Management Commission

