



## Bassett Creek Park Dog Park May 10, 2022

### History – 2017 Park System Master Plan

Parks provide places for people to improve physical and mental health.

#### Planning Goal:

- Provide facilities that people want to use – to get outside.
- Solicit input on value of current facilities.
- Collect input on facilities to add or improve.

*Plan approved by the Crystal City Council on Dec. 19, 2017*



## History – 2017 Park System Master Plan

Relocating the dog park was a common request from the public.

### Discussion:

- Injury of dogs has occurred.
- Provide more space to allow dogs to spread out.
- Provide separate areas for large and small dogs.
- Provide more shade for people and their pets.
- Stay out of higher quality woodlands.



Only six oak woodland-brushland remnants were documented within the City of Crystal – total of all combined is 18.7 acres.



CITY OF CRYSTAL

## History – 2017 Park System Master Plan

Location was selected because it was a significantly disturbed site.

### Discussion:

- Map from 1971 (right) shows structures in this area.
- Some concrete remains from uses during this time.
- Area taken over by buckthorn thickets and 'volunteer' trees.
- Opportunity exists to improve the woodland while working on the dog park.



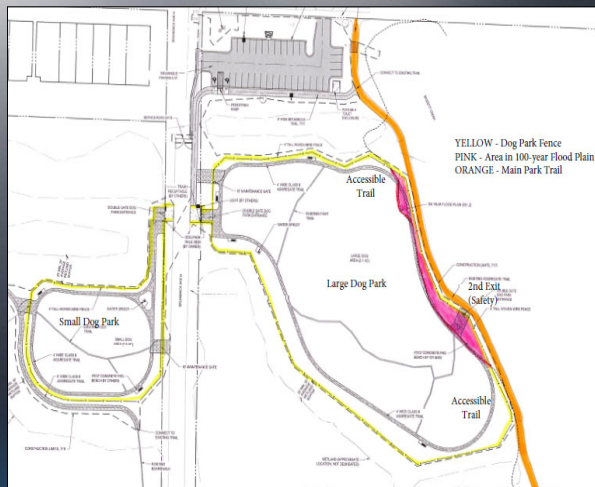
CITY OF CRYSTAL

## Dog Park Planning - 2021

June of 2021, the Park and Recreation Commission reviewed dog parks in other cities prior to designing this one.

### Goals:

- Address design requests from master planning process.
- Provide a second dog park entrance for safety reasons.
- Promote accessibility for people with mobility impairments.
- Remove hazardous trees and improve habitat for public use.

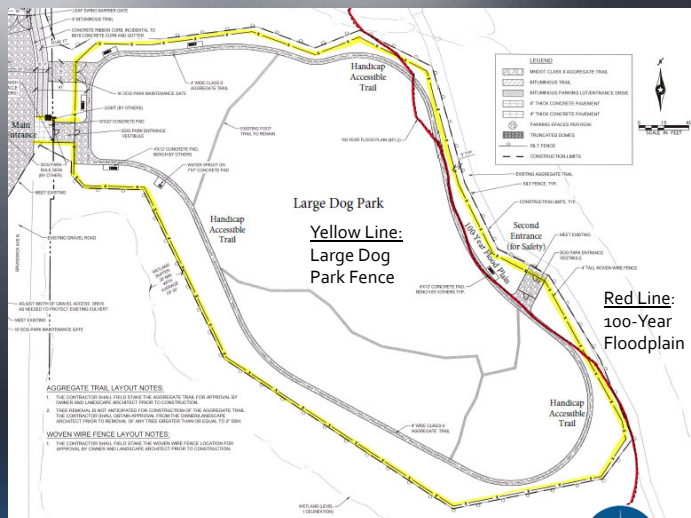


## Dog Park Planning - 2021 & 2022

Public engagement occurred via e-mail and on-line over the winter.

### Design Features:

- Wetland buffers are being met with largest buffer from creek.
- Main dog park entrance is away from the creek.
- Accessible trail is included, but is on the edge of flood plain.
- 2<sup>nd</sup> entrance is included, but is on the edge of flood plain.



## Dog Park Planning - 2022

### Review of project / flood plain issues.

#### Watershed:

- 3/22 – Plans sent to watershed for review prior to bid of project.
- 3/25 – Zoom meeting with watershed prior to bid of project.
- 3/25 – Application submitted due to floodplain impact (fence).
- 4/14 – Information on mitigating bacteria provided to Barr.
- 4/14 – Barr recommended approval of permit.
- 4/21 – BCWMC Meeting – Item on floodplain impact at dog park tabled.
- 5/4 – Site visit with watershed staff to discuss best management practices.

#### 4J Bassett Creek Dog Park Area– Crystal, MN BCWMC 2022-05

##### Summary:

**Project Proposer:** City of Crystal

**Proposed Work:** Installation of a new dog park, parking lot, and other site improvements

**Basis for Review at Commission Meeting:** Fill in the floodplain

**Impervious Surface Area:** Increase approximately 0.19 acres

**Project Schedule:** June 2022 construction

**Recommendation for Commission Action:** Approval



## Dog Park Planning - 2022

### Proposed bacteria limiting actions.

#### Provided during permit review:

- Dogs are not allowed in water.
- Buffer to creek exceeds setback requirements.
- Dog feces ordinance in place.
- Information on ordinance is posted on-line and in dog park.
- City purchases and provides bags for feces pick-up.
- City provides garbage cans for disposal of feces.



Dogs not allowed in the water at Bassett Creek

*Minnehaha Off-Leash Dog Park (at left)*



## Dog Park Planning - 2022

### Proposed bacteria limiting actions.

#### Discussed during May 4 field review:

- The city will work with the watershed on pet waste signage.
- The city will assure pet bags and garbage cans are at each entrance.
- The city will improve the existing swale between the dog park and trail.
- Sparse woodland ground cover in dog park area will be replaced with grass.
- Majority of drainage is away from creek.
- Main entrance/traffic is away from creek.



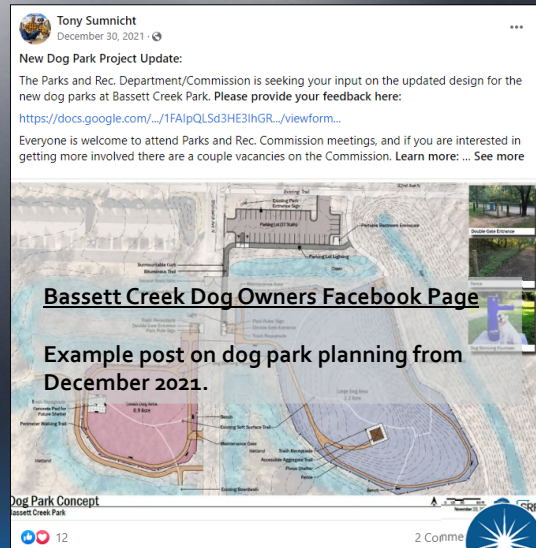
CITY of CRYSTAL

## Dog Park Planning - 2022

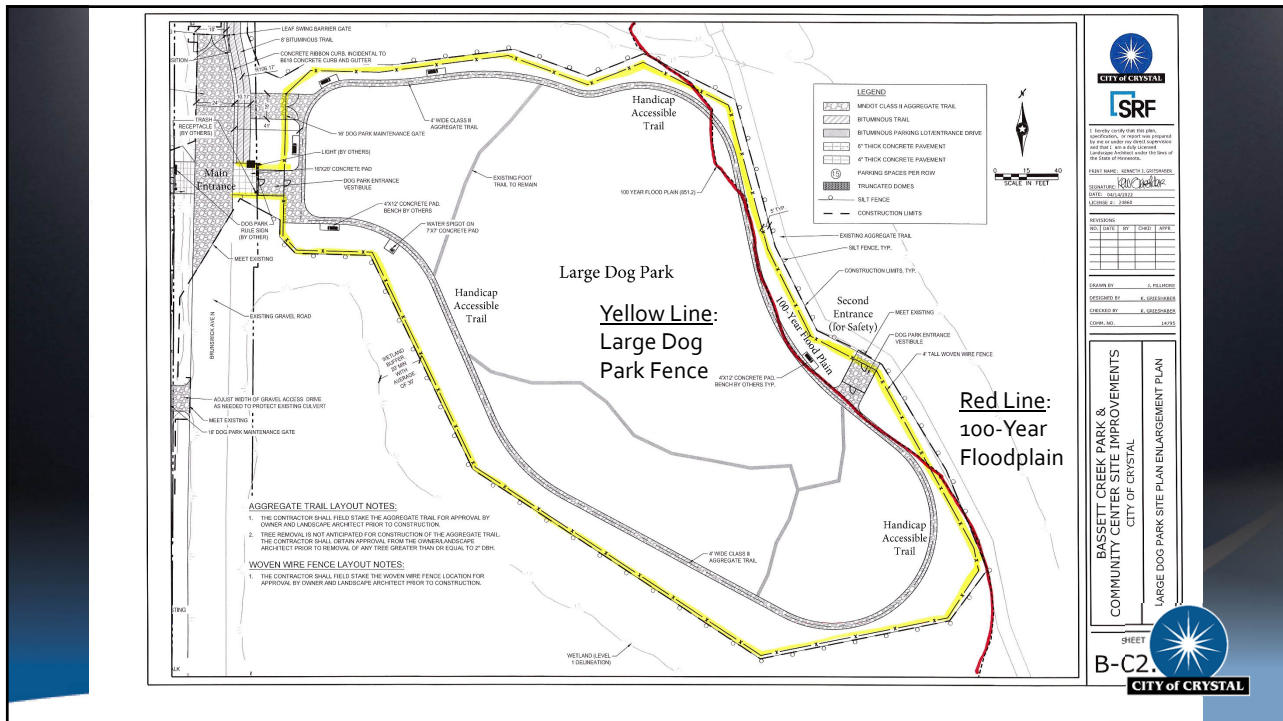
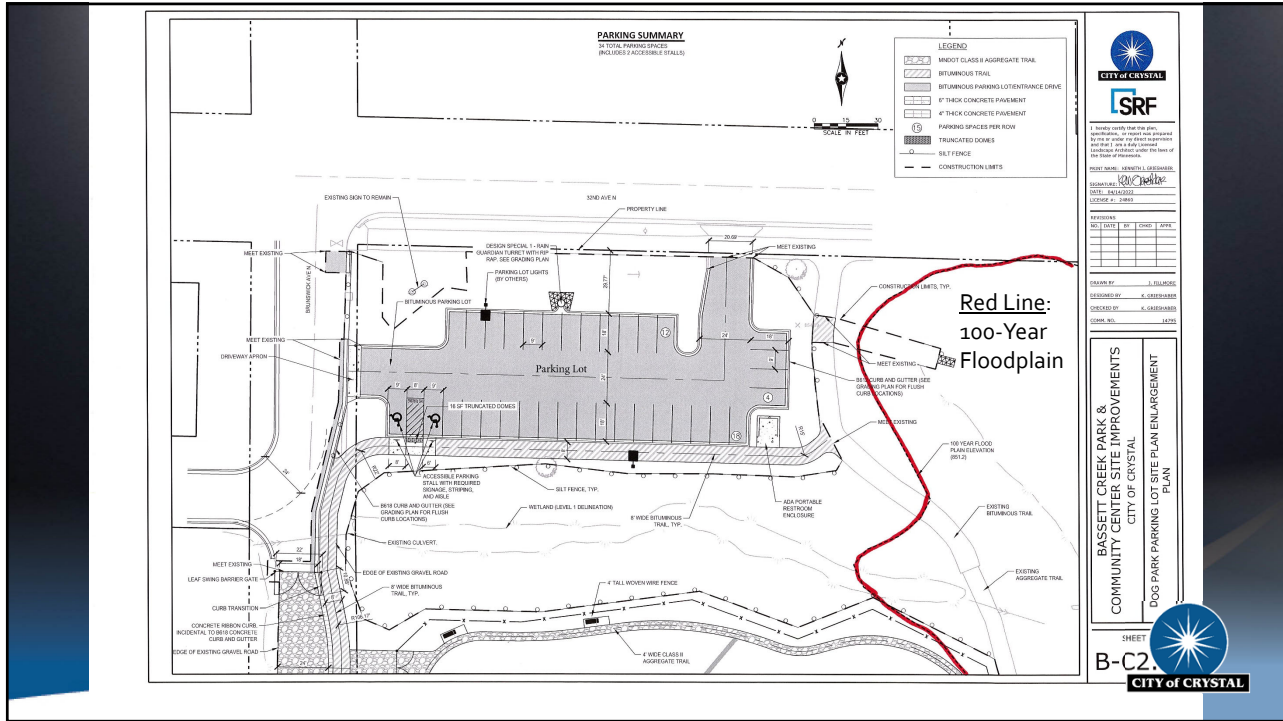
Dog park users are more likely to pick up dog feces than dog walkers.

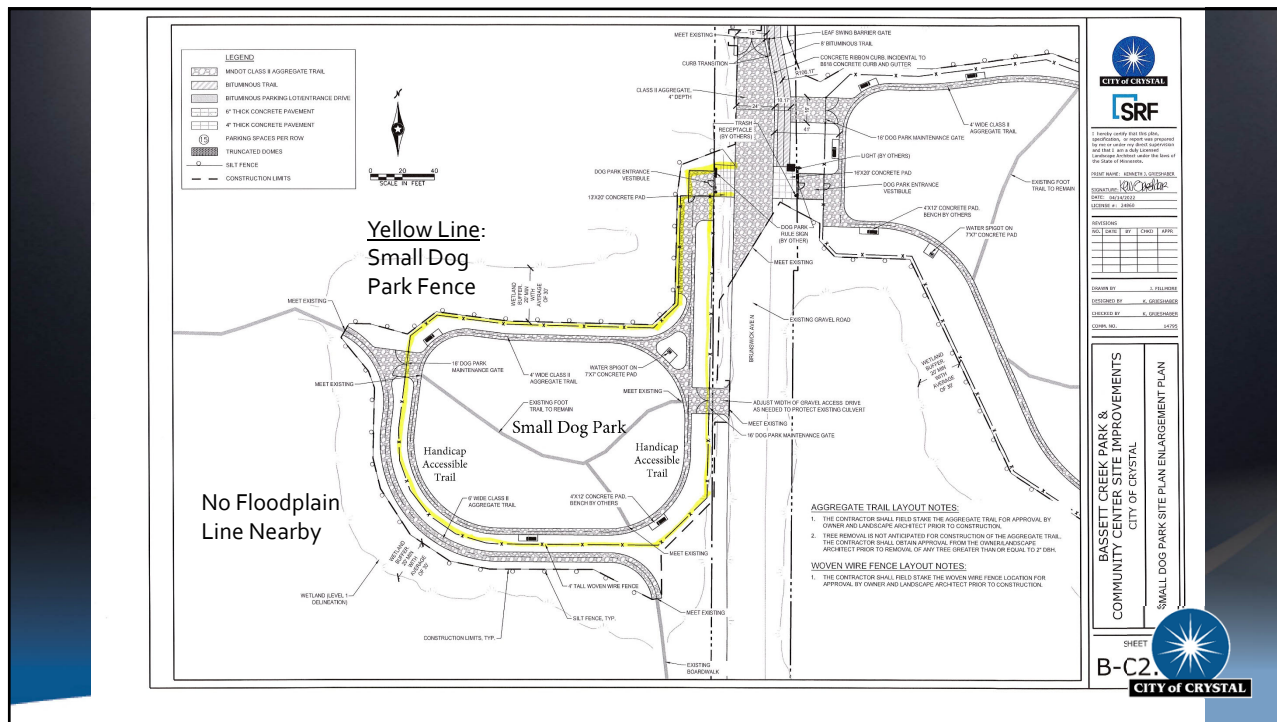
#### Discussion:

- Easier to provide education and outreach when focused in one area.
- Dog parks have bags and garbage cans available to dispose of waste.
- Park users (all types) generally take better care of well managed areas.
- Regular dog park users can help promote positive dog park behavior.
- Bassett Creek Dog Owners Group helps share dog park information.



CITY of CRYSTAL





## Questions?

John Elholm, Recreation Director  
 City of Crystal

[John.Elholm@crystalmn.gov](mailto:John.Elholm@crystalmn.gov)

(763) 531-1150

Park Project Webpage:

[https://parksandrec.crystalmn.gov/recreation/park\\_system\\_projects](https://parksandrec.crystalmn.gov/recreation/park_system_projects)

