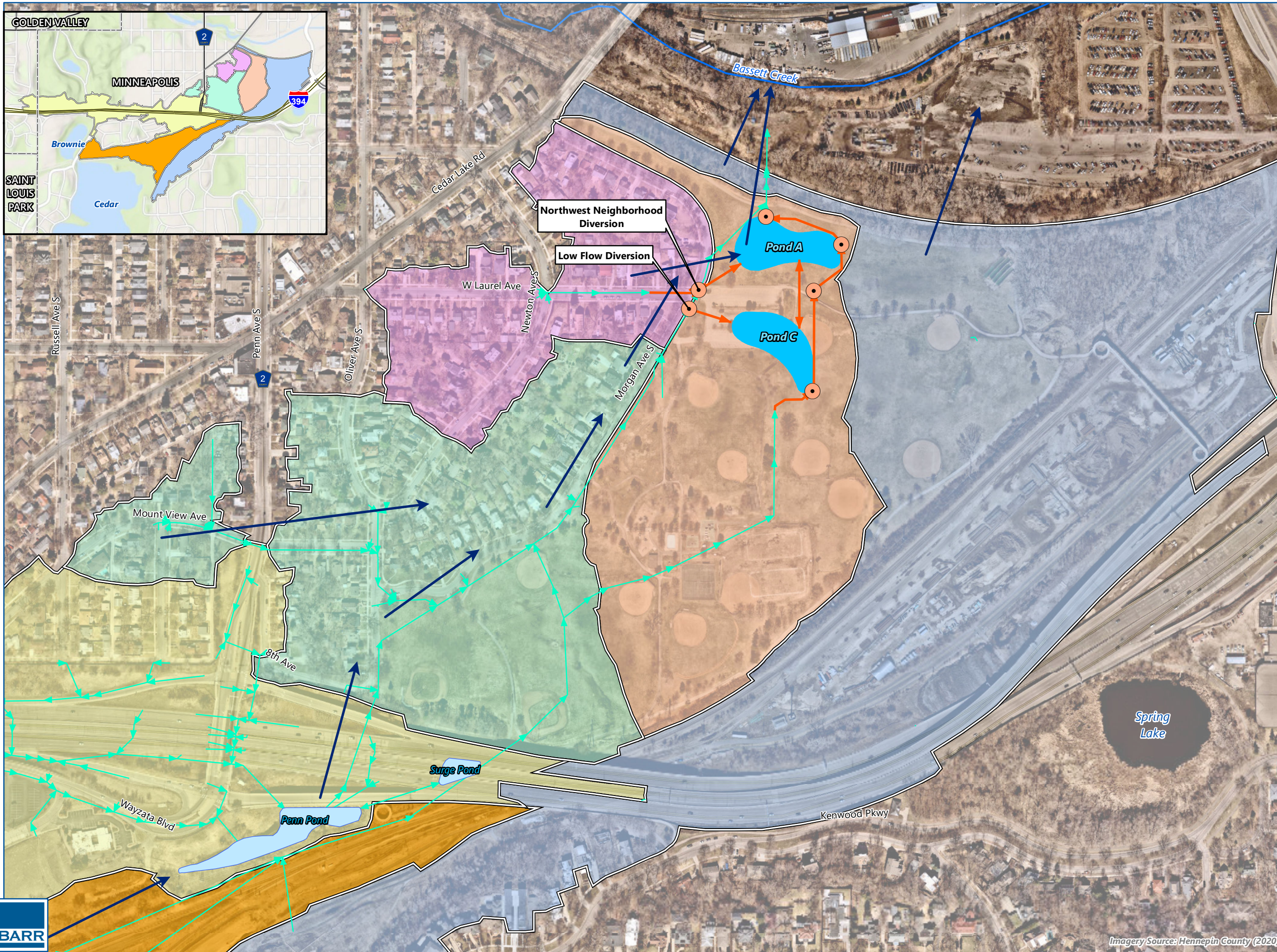


Barr Footer: ArcGIS 10.8.1, 2022-03-04 17:52 File: \\Client\BassettCreek\Work_Orders\2021\Bryn_Mawr_Meadows_WQ_Improvement\Maps\Reports\Stormwater_Mgmt_Report\Figure 1 - 90% Design Water Quality Summary_2022-03-04.mxd User: GDF



- New Structure
 - Creeks
 - General Flow Paths
 - Proposed Storm Sewer
 - Existing Storm Sewer
 - Proposed Stormwater Pond
 - Existing Stormwater Pond
- Proposed Watersheds
- Drains to Low Flow Diversion Weir
 - Drains to Northwest Neighborhood Diversion
 - Park Area Contributing to Ponds A and C
 - Drains to Pipe Through Park
 - Park Area Draining Away from Ponds A and C
 - Drains to Penn Pond
 - Municipal Boundary

90% DESIGN - CONCEPT 3
Northwest Neighborhood
Diversion & Low Flow Diversion
Bryn Mawr Meadows Park
Water Quality Project BC-5

FIGURE 1



Imagery Source: Hennepin County (2020)