



Memorandum

To: Bassett Creek Watershed Management Commission (BCWMC)
From: Barr Engineering Co. (Barr)
Subject: Item 4F: Plymouth 2023 City Center Pavement Rehabilitation – Plymouth MN
BCWMC March 16, 2023 Meeting Agenda
Date: March 9, 2023
Project: 23270051.58 2023 2309

4F Plymouth 2023 City Center Pavement Rehabilitation Project – Plymouth, MN BCWMC 2023-02

Summary:

Proposed Work: Street reconstruction including reclamation and milling existing street, sidewalk replacement and installation, trail installation, pedestrian ramp improvements, and utility improvements (storm and water)

Project Proposer: City of Plymouth

Project Schedule: 2023 construction

Basis for Review at Commission Meeting: Linear project with more than five acres of disturbance

Impervious Surface Area: Increase approximately 0.1 acres

Recommendation for Commission Action: Conditional approval

General Project Information

The proposed linear project is in the City of Plymouth within the Plymouth Creek Subwatershed (see attached map for locations). The proposed linear project includes reconstruction of streets and utility improvements, including storm sewer and water main, resulting in 9.5 acres of grading (disturbance). The proposed linear project creates 0.9 acres of new and fully reconstructed impervious, including 0.8 acres of fully reconstructed surfaces and an increase of 0.1 acres of impervious surfaces from 8.1 acres (existing) to 8.2 acres (proposed).

Floodplain

The proposed project includes work in the BCWMC (Plymouth Creek Park Pond) 1% annual-chance (base flood elevation, 100-year) floodplain. The January 2023 BCWMC Requirements for Improvements and Development Proposals (Requirements) document states that projects within the floodplain must maintain no net loss in floodplain storage and no increase in flood level at any point along the trunk system (managed to at least a precision of 0.00 feet). The 1% annual-chance (base flood elevation, 100-year) floodplain elevation of upstream of the Plymouth Creek Park Pond Outlet structure is 954.8 feet NAVD88.

Wetlands

The City of Plymouth is the local government unit (LGU) responsible for administering the Wetland Conservation Act; therefore, BCWMC wetland review is not required.

Rate Control

The proposed linear project does not create one or more acres of net new impervious surfaces; therefore, BCWMC rate control review is not required.

Water Quality

The proposed linear project does not create one or more acres of net new impervious surfaces; therefore, BCWMC water quality review is not required.

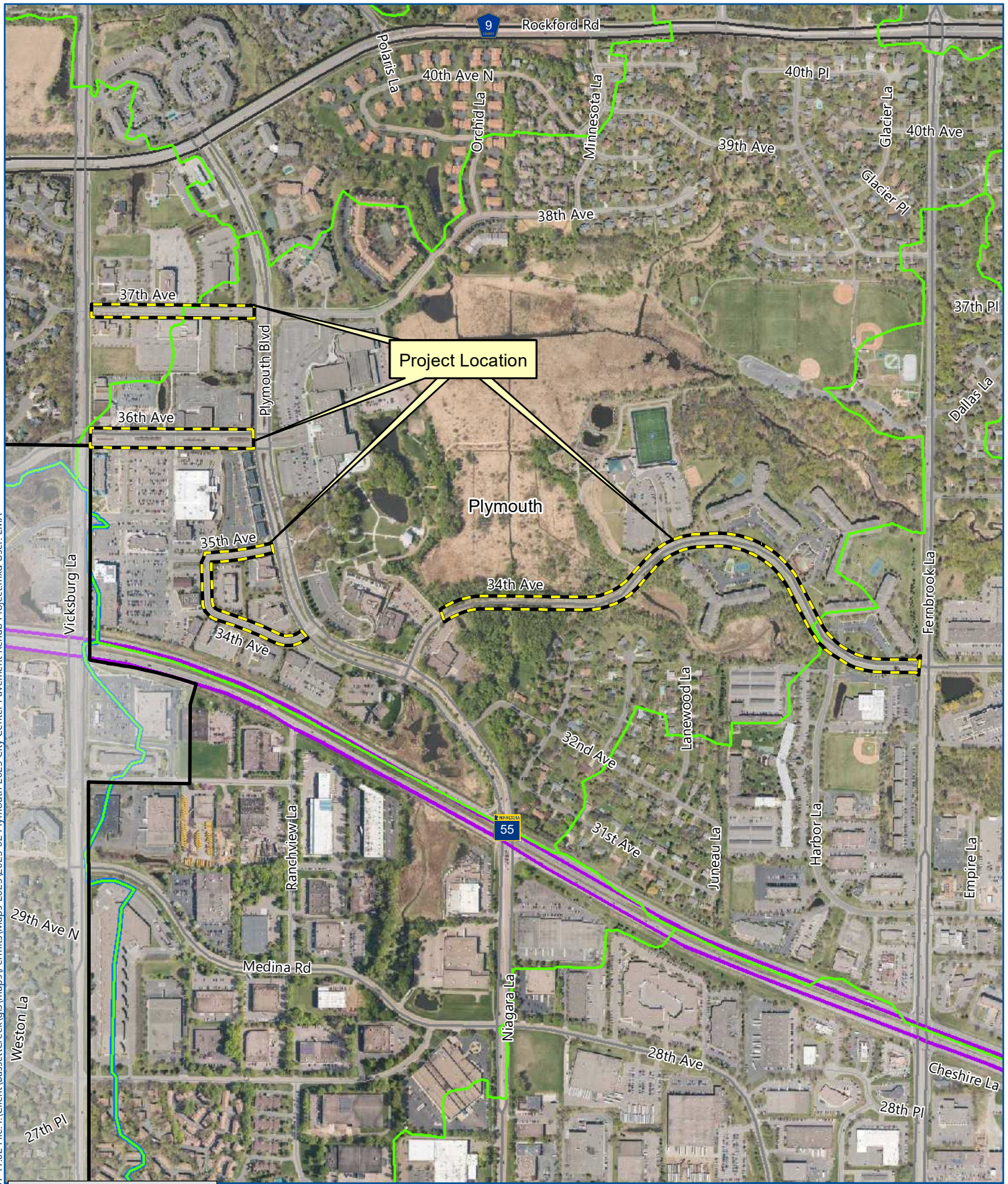
Erosion and Sediment Control





The proposed linear project results in one or more acres of land disturbance; therefore, the proposed project must meet the BCWMC erosion and sediment control requirements. Proposed temporary erosion and sediment control features include rock construction entrances, silt fence, and storm drain inlet protection. Permanent erosion and sediment control features include stabilization with hydromulch and seed.

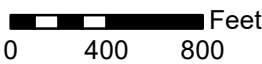
Recommendation for Commission Action

Conditional approval based on the following comments:

1. A portion of the project along 34th Avenue (approximately station 50+00 to 56+00) is located in the BCWMC 100-year floodplain. The BCWMC 100-year floodplain elevation is 954.8 feet NAVD88. Applicant must demonstrate there is no fill in the floodplain as a result of the proposed project.
2. Applicant should consider opportunities to improve water quality as part of the project (i.e., sump manholes, rain gardens).
3. Sheet C1.14: An installation detail for inlet protection must be added.
4. Sheet C2.02: The following note must be added, "Require that soils tracked from the site be removed from all paved surfaces within 24 hours of discovery throughout the duration of construction."
5. Sheet C2.02: Site stabilization completion note must be changed to "7" days.
6. Location of rock entrances must be shown on the plans.
7. Silt fence or other sediment perimeter control must be installed along construction limits where runoff leaves the project site. Plans must be revised to include contours to demonstrate appropriate sediment perimeter control.



-  Project Location
-  Municipality
-  BCWMC Legal Boundary
-  Major Subwatershed
-  BCWMC Hydrologic Boundary



BCWMC 2023-02
 PLYMOUTH 2023
 CITY CENTER PAVEMENT
 REHABILITATION PROJECT
 Plymouth, MN
 LOCATION MAP