

# BCWMC Plan Steering Committee Workshop

## May 24, 2023

Staff: Karen, Laura, Greg



Committee Members:

1. Catherine Cesnik, Plymouth
2. Monika Vadali, Plymouth
3. Michael Welch, Minneapolis
4. Jodi Polzin, Minneapolis
5. Shaun Kennedy, Medicine Lake
6. Linda Loomis, At-large community member
7. TAC Member Ben Scharenbroich
8. TAC Member Mark Ray

# Plan Steering Committee (PSC) Role:

Serve in advisory capacity to the Commission

Develop recommendations on issues, goals, policies, and programs for Commission consideration

- List issues and develop issue statements
- Prioritize issues
- Develop measurable goals to address issues
- Develop policies, programs, projects & to realize goals



**Standards**

**Projects**

**Collaboration**

**Education**

# PSC Ground Rules & Expectations

- Come prepared; review materials before meeting
- Respect all input and be open minded; realize not all voices are represented
- Step up/step back; make sure you're heard and make space for others
- Commit to active participation
- Communications through Administrator
- Work with a spirit of brainstorming; keeping everything on table at beginning

## Decision Making:

- Strive for consensus among all members
- Consider simple majority among all 8 members in attendance

# Staff Commitment & Expectations

- Prepare agenda, materials, meeting notes
- Provide the data and information to help committee make informed decisions
- Start and end meeting on time
- Bring snacks and drinks
- Respect all input and be open minded

## Meeting materials considerations:


- Online for now
- Materials one week in advance, especially weekends; timing may depend on amount or complexity of materials

# Plan Schedule



APRIL 2022 – APRIL 2023

## Analyze More Challenging Issues

- Perform gaps analysis
  - Gather data and options to address challenging issues
- 


APRIL – DECEMBER 2022

## Gather Initial Stakeholder Input

- Hear about issues and concerns from cities
- Get input from agencies, Hennepin County, and technical partners
- Collect input from residents and communities through events and surveys
- Prioritize issues


MAY 2023 – DECEMBER 2024

## Develop Plan Content

- Define issues and priority resources
  - Develop measurable 10-year goals
  - Craft targeted policies, programs, and standards
  - Develop 10-year implementation schedule and budget
- 

JANUARY – SEPTEMBER 2025

## Gather Feedback and Finalize Plan

- Submit draft plan for official 60-day review
  - Gather feedback and respond to all comments
  - Hold public hearing
  - Submit plan for final agency review
  - Adopt final plan – **TARGET: September 2025**
- 



# Good planning:

Is an opportunity to step back: affirm, align, or change direction based on current conditions and input from variety of sources

Is targeted, prioritized and measurable with short/mid/long-term goals based on science and needs of resources and communities

Addresses organization capacity and incorporates self-evaluation, accountability and efficiency of implementation

Considers unintended consequences

# Plan Contents (8410)

- Executive Summary
- Inventory of Land and Water Resources
- Measurable goals that address:  
Water Quality, Water Quantity, Public Drainage System,  
Groundwater, Wetlands
- Prioritized implementation actions including:  
Schedule, Cost, Funding source, Responsible party, Evaluation  
procedure

# Agency & Partner Input

- Minnesota Board of Water and Soil Resources (BWSR)
- Minnesota Department of Natural Resources (MDNR)
- Minnesota Pollution Control Agency (MPCA)
- Metropolitan Council
- Hennepin County
- Three Rivers Park District (TRPD)





# Agency & Partner Input

Issue or Opportunity (briefly)	BWSR	MDNR	MPCA	Met Council	Hennepin Co.	TRPD
Emphasis on addressing chloride pollution	X	X	X			X
Focus on impaired waterbodies and TMDL partnerships			X	X	X	X
Consider impacts and opportunities related to climate change	X		X	X	X	
Emphasis on measurable goals and progress assessment	X		X	X		
Opportunities for AIS management/native protection		X			X	X
Consider equity issues in watershed planning			X	X		
Consider grant funding for small-scale BMPs					X	X

# City Input

6 of 9 cities

Input received mostly from city staff but also from BCWMC commissioners or environmental commissions

In General Cities Noted:

- BCWMC should continue core programs such as water monitoring, modeling, Flood Control Project inspections, and CIP program
- BCWMC could expand education programming including outreach to diverse communities
- BCWMC should consider starting a cost share or grant program for installation of best management practices by residents, businesses, and cities

# City Input

## Notes Continued:

- Provide assistance with routine maintenance of Flood Control Project
- Provide more focus on floodplain management
- Consider refining implementation of Capital Improvement Program (too time consuming and expensive)



Issue	Level of concern and level of BCWMC involvement		
Chloride Pollution	Very Concerned 4 cities	Somewhat Concerned 3 cities	Not Concerned
	Very Involved 5 cities	Somewhat Involved 1 city	Not Involved
Addressing Diversity, Equity, Inclusion	Very Concerned 3 cities	Somewhat Concerned 4 cities	Not Concerned
	Very Involved 1 city	Somewhat Involved 4 cities	Not Involved
Adequacy of current performance standards for linear projects	Very Concerned 1 city	Somewhat Concerned 3 cities	Not Concerned 3 cities
	Very Involved 3 cities	Somewhat Involved 3 cities	Not Involved

Issue	Level of concern and level of BCWMC involvement		
Capital Improvement Program (CIP) implementation	Very Concerned	Somewhat Concerned 3 cities	Not Concerned 4 cities
	Very Involved 2 cities	Somewhat Involved 4 cities	Not Involved
Bassett Creek Valley flooding and water quality issues	Very Concerned 1 city	Somewhat Concerned 4 cities	Not Concerned 1 city
	Very Involved 3 cities	Somewhat Involved 4 cities	Not Involved
Carbon footprint or climate impact of BCWMC projects and programs	Very Concerned 3 cities	Somewhat Concerned 2 cities	Not Concerned 1 city
	Very Involved 3 cities	Somewhat Involved 1 city	Not Involved 1 city



# Public Survey Results

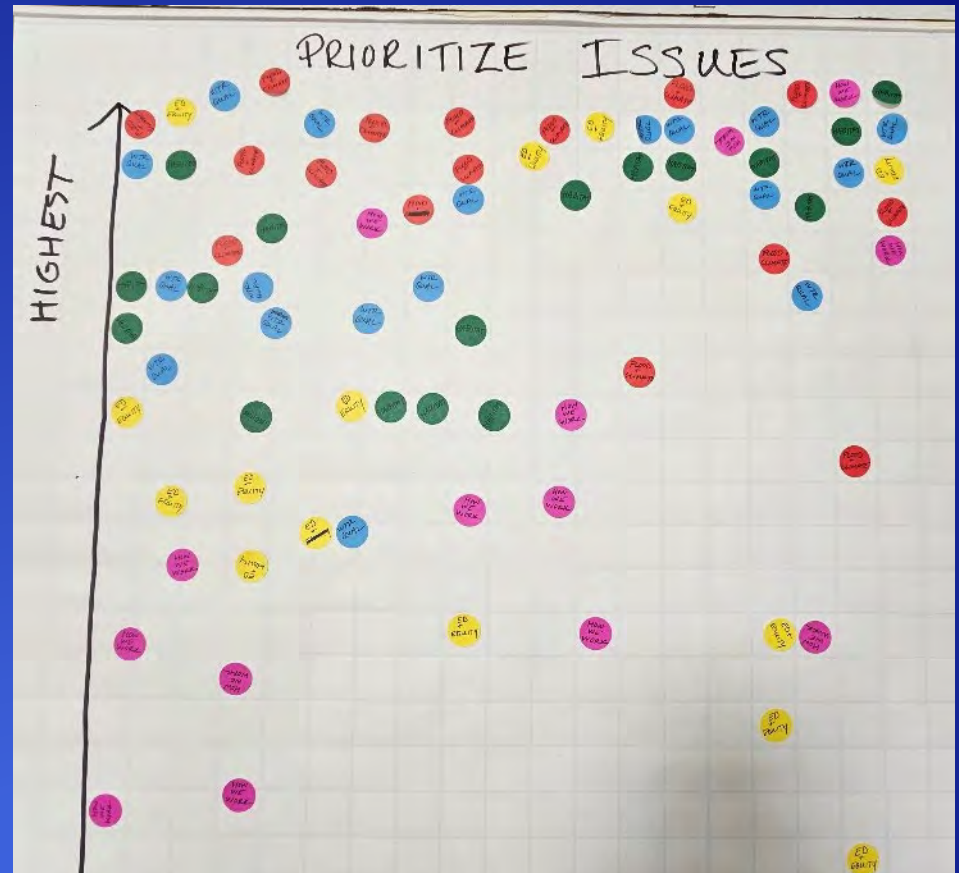
- 165 Respondents
- 80% say natural resources (lakes, streams, wetlands) are very important to their quality of life
- Biggest concerns
  - Pollutants entering waterbodies
  - Health of aquatic habitats; abundance & diversity of wildlife
  - Aquatic Invasive Species (AIS)
  - Impacts of climate change

# Suggestions from Public:

- Less trash in lakes and along streams
- Lower chloride levels (less salt!)
- More logs for turtles
- Less streambank and shoreline erosion
- More education of residents & new homeowners
- Better access to the creek for paddlers and enjoying nature
- Incentives for native plantings and other best practices

# Prioritization from Open House

-  Flooding, Water Levels, Climate Resiliency
-  Water Quality and Pollution
-  Natural Habitats & Shorelines
-  Education, Outreach, Equity
-  BCWMC Work: Who, How, Funding



# July 2022 PSC Workshop

Small group breakouts to categorize issues:

- Commission role generally appropriate
- Important issue that needs more analysis
- Important issue but not for Commission lead

(See table from input summary memo)

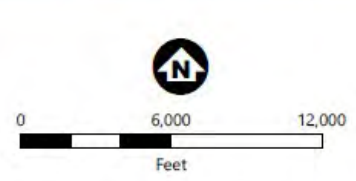
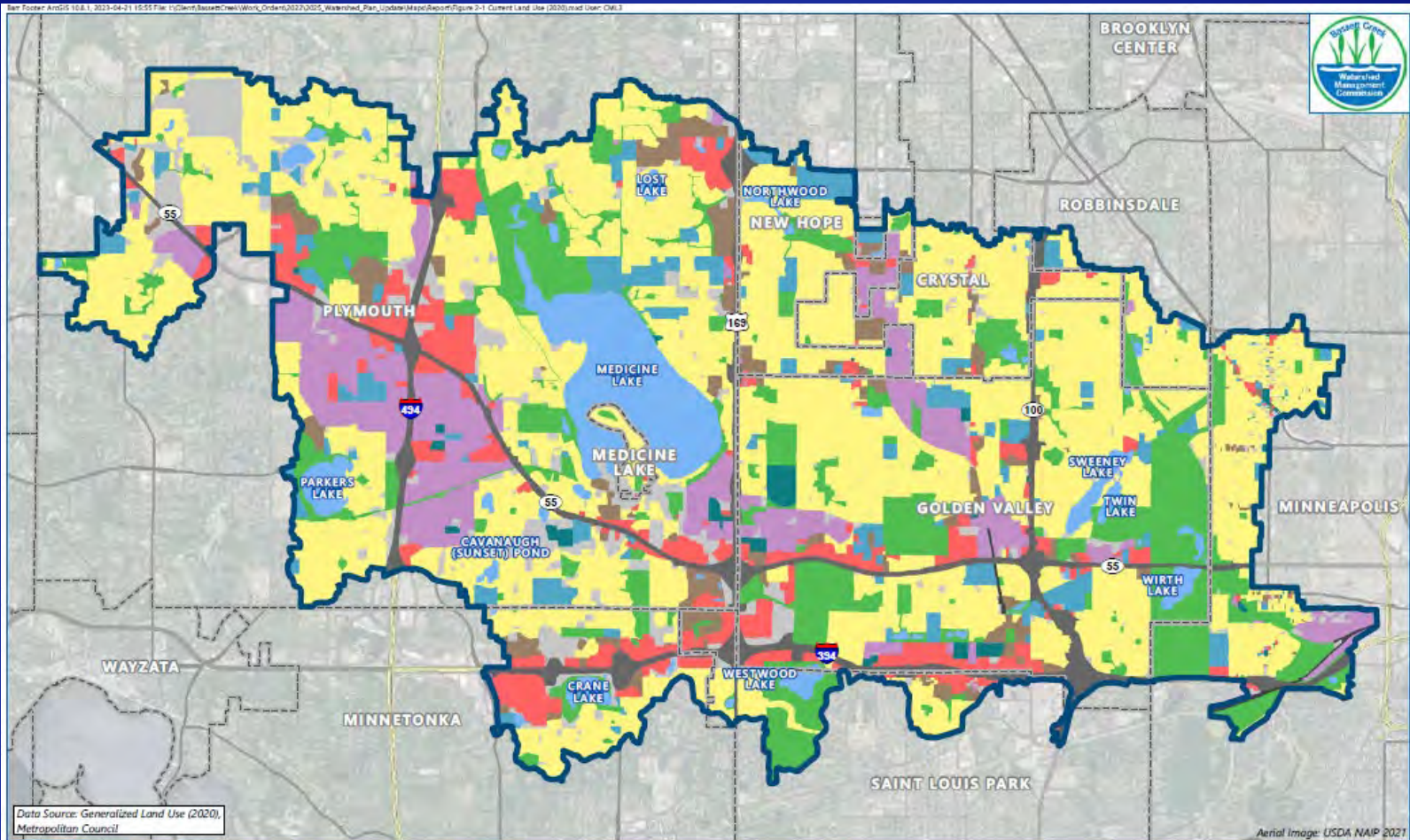
# Watershed Conditions

Plan development considers geospatial data:

- Land Use
- Topography
- Hydrologic Soil Groups
- Wellhead Protection Areas
- Major Subwatersheds
- Priority Waterbodies
- Wetlands and Biological Survey
- Monitoring Locations
- Impaired Waters and Impervious Land Use
- Water Quality Modeling Results
- Potential Pollutant Sources
- Hydrologic/Hydraulic Modeling
- Floodplain (100-year)
- Trunk System and Flood Control Project
- Parks, Recreation, and Public Access



# Land Use (2020)

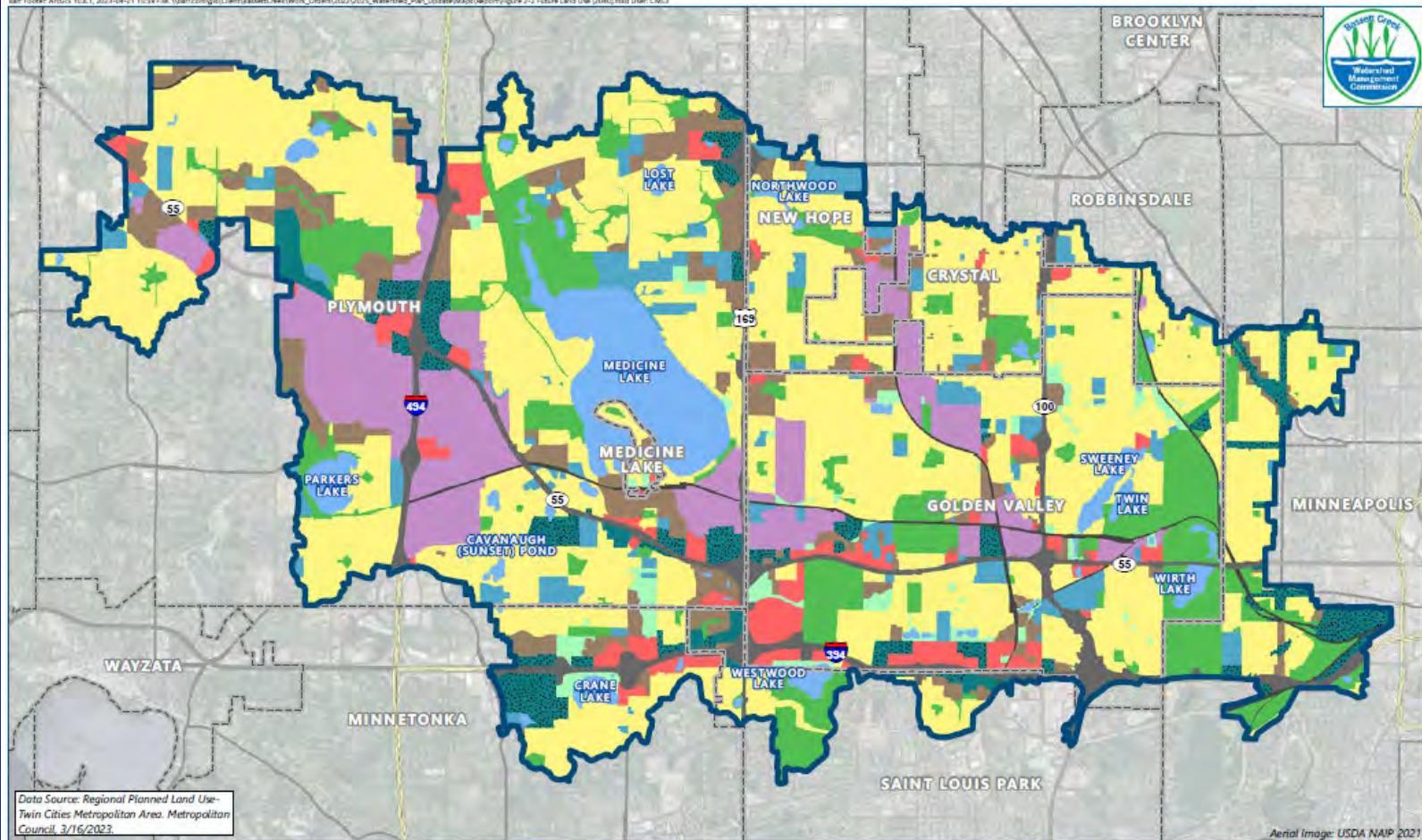


**FIGURE 2-1**  
**CURRENT LAND USE (2020)**  
Bassett Creek Watershed  
Management Commission  
2025 Management Plan



# Land Use (2040)

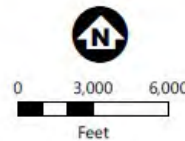
Bar Footer: ArcGIS 10.8.1, 2023-04-21 15:59 File: \\bar\com\gis\client\basett\creek\work\_orders\2023\2023\_WaterUse\_Plan\_Update\Map\Report\Figure 2-2 Future Land Use (2040).mxd User: CML



Data Source: Regional Planned Land Use - Twin Cities Metropolitan Area, Metropolitan Council, 3/16/2023.

Aerial Image: USDA NAIP 2021

- |                               |                                |                               |
|-------------------------------|--------------------------------|-------------------------------|
| BCWMC Jurisdictional Boundary | Rural or Large-Lot Residential | Mixed Use                     |
| Municipal Boundary            | Single Family Residential      | Multi-Optional Development    |
|                               | Multifamily Residential        | Park and Recreation           |
|                               | Commercial                     | Open Space or Restrictive Use |
|                               | Industrial                     | Rights-of-Way (i.e., Roads)   |
|                               | Institutional                  | Railway (inc. LRT)            |
|                               |                                | Open Water                    |



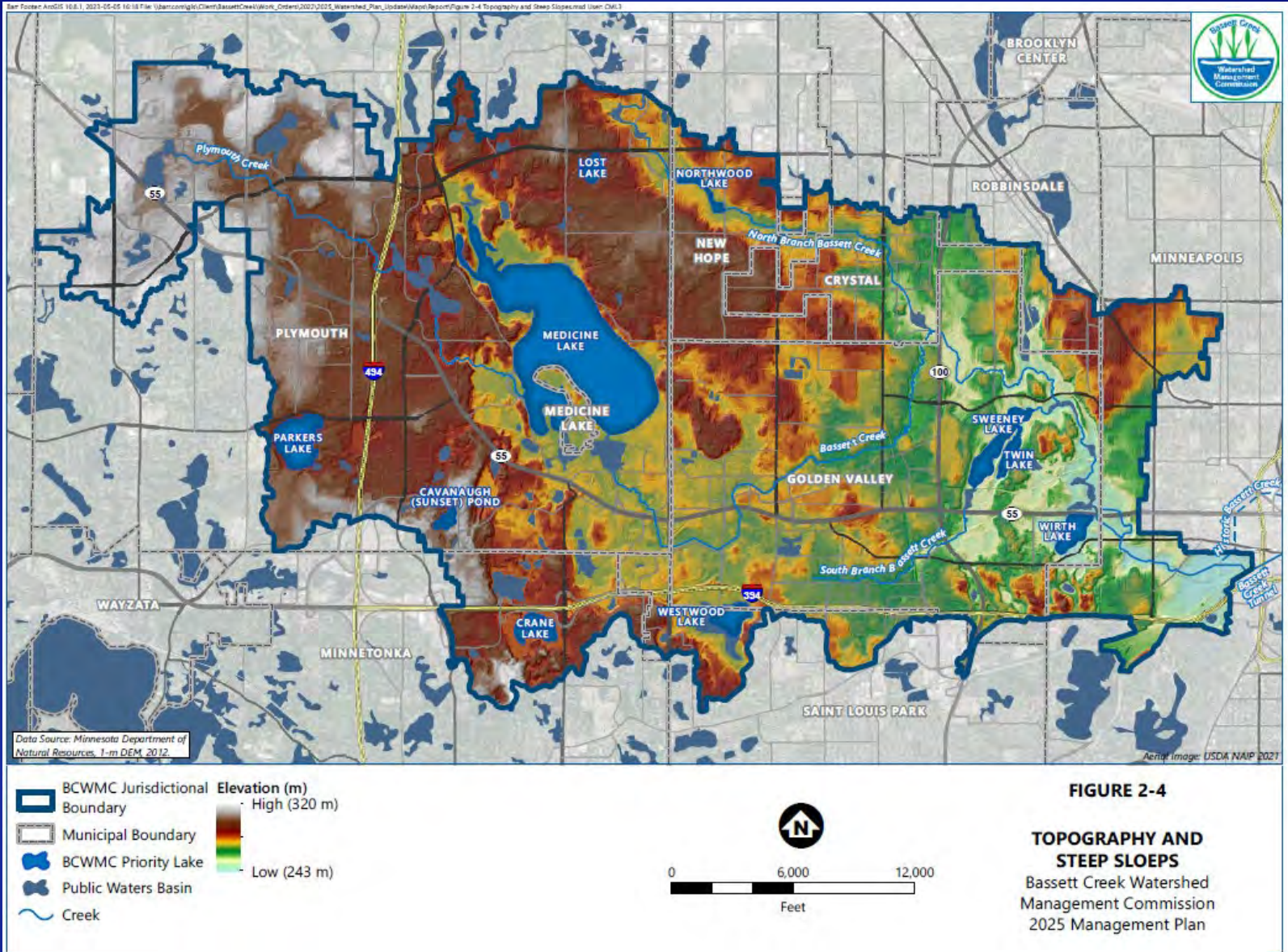
**FIGURE 2-2**

**PLANNED LAND USE (2040)**

Bassett Creek Watershed Management Commission  
2025 Management Plan



# Topography





# Hydrologic Soil Group

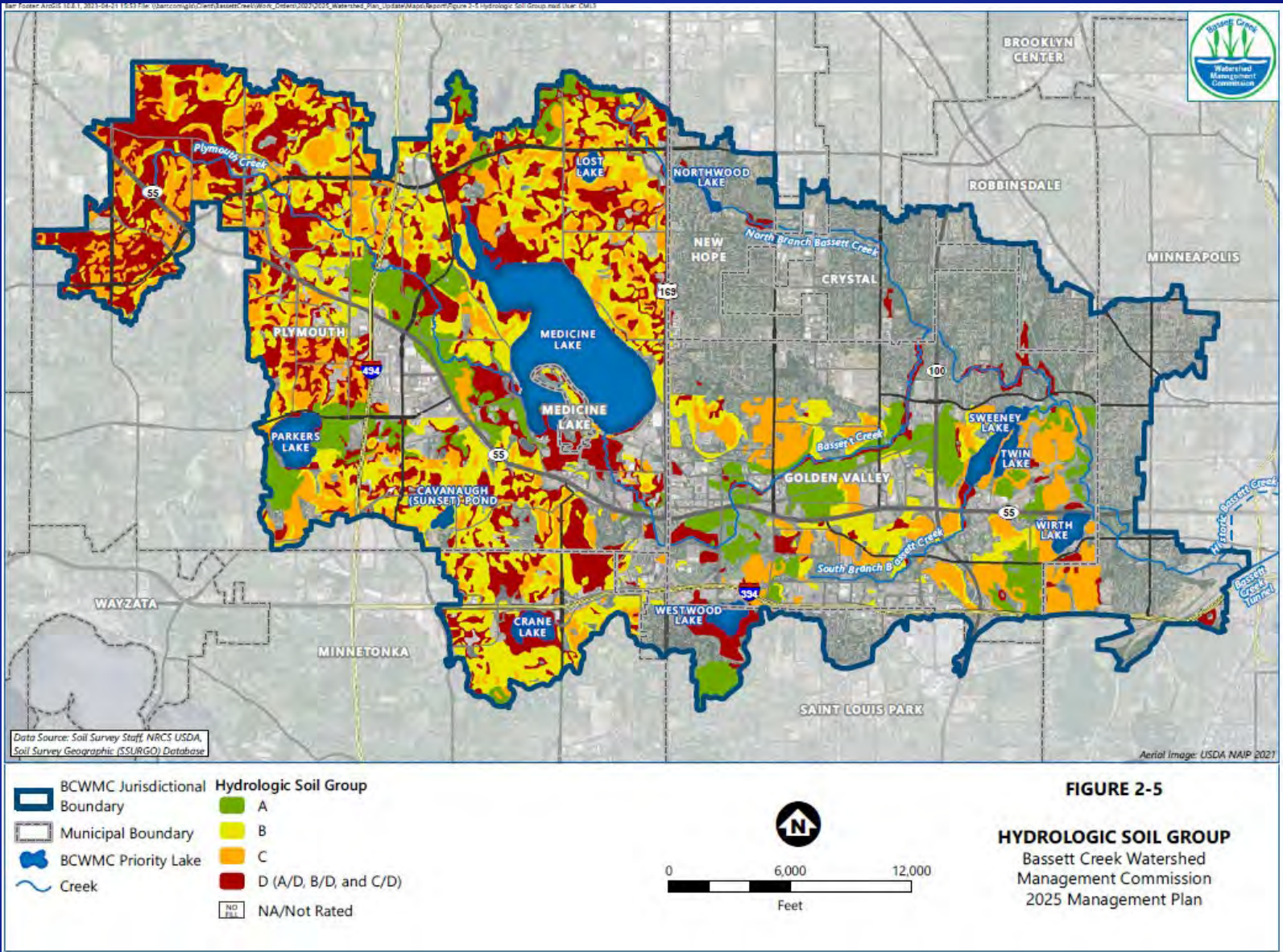
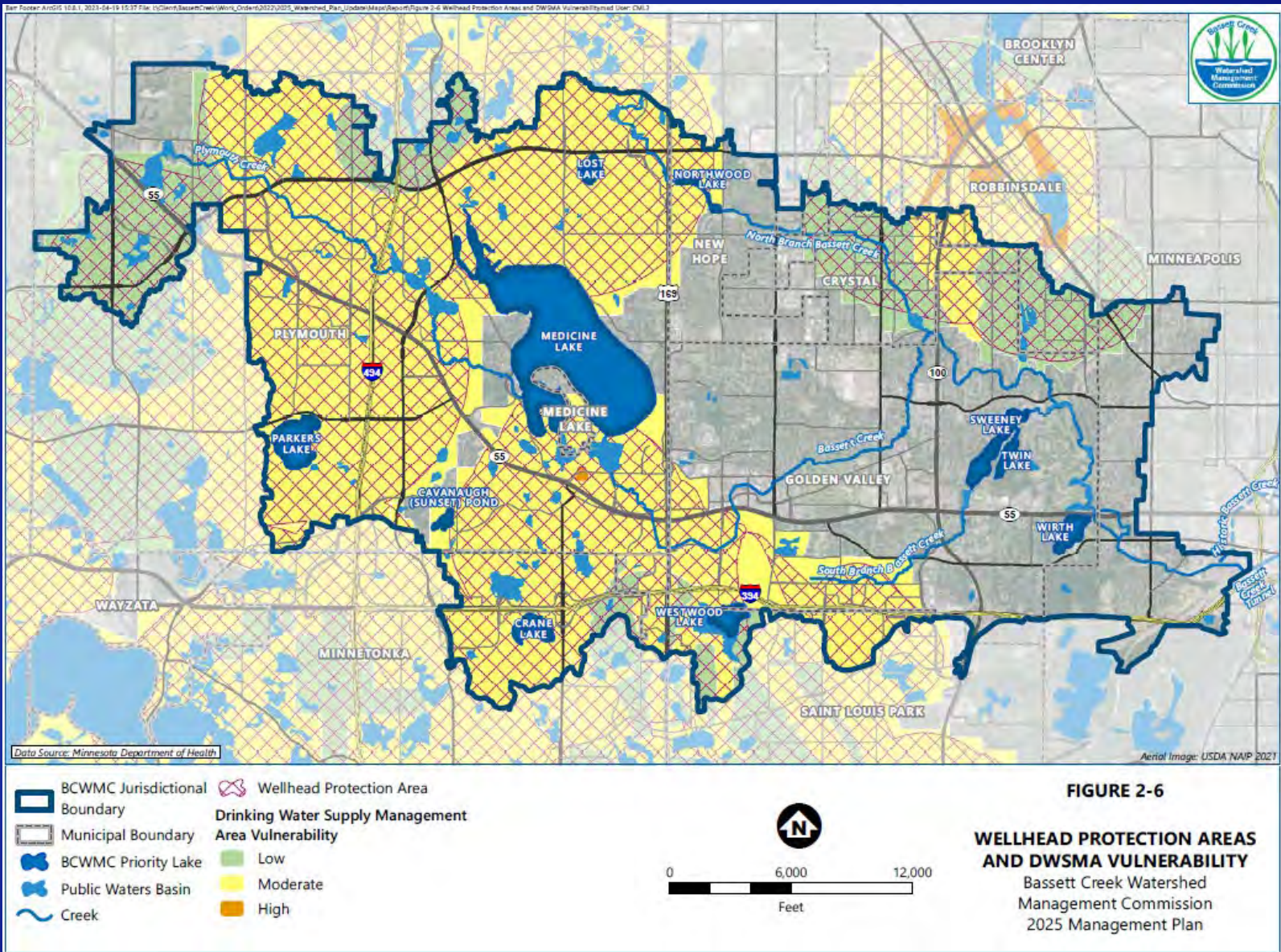


FIGURE 2-5

**HYDROLOGIC SOIL GROUP**  
 Bassett Creek Watershed  
 Management Commission  
 2025 Management Plan



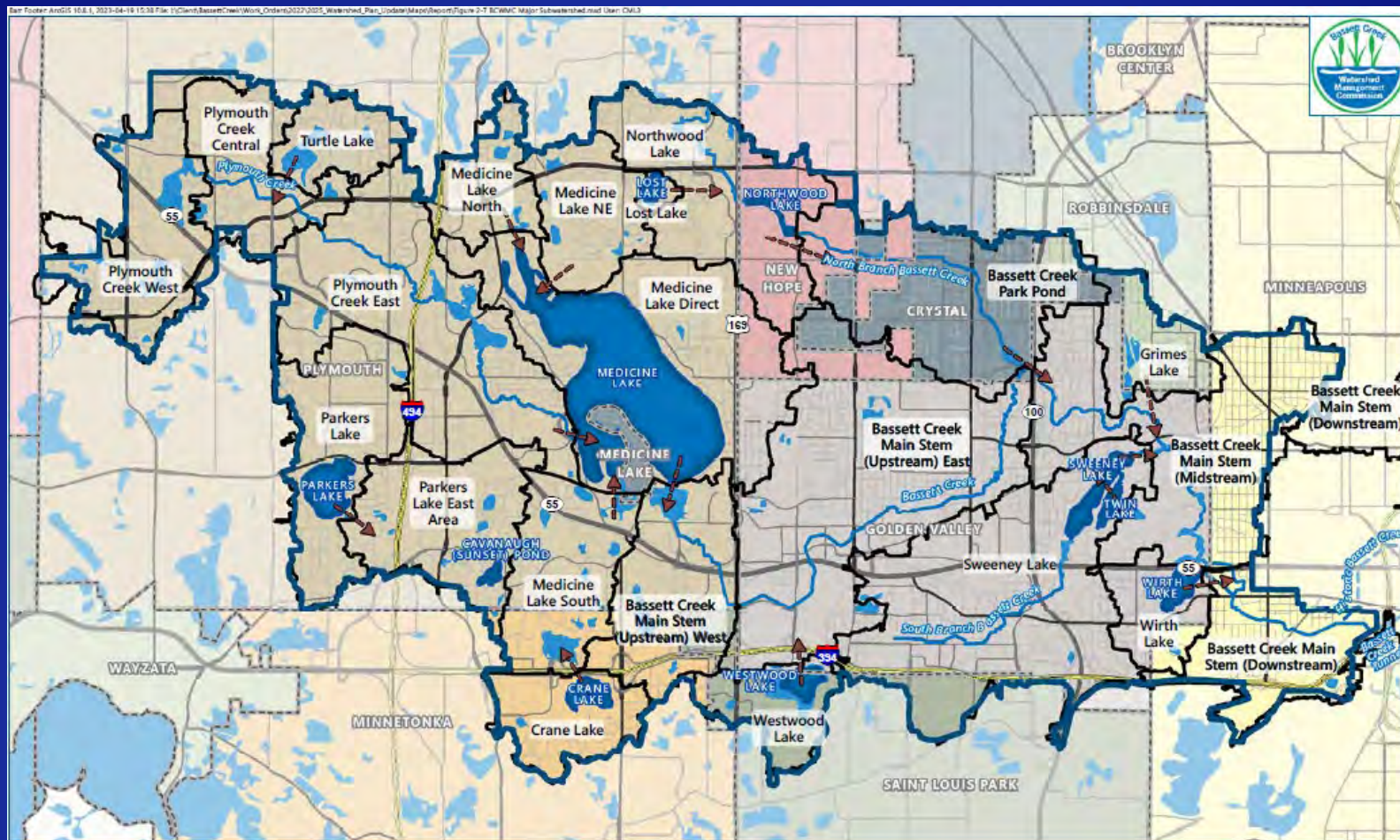
# Wellhead Protection Areas



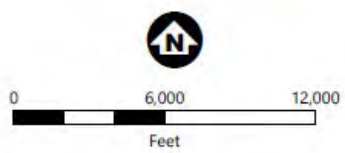


# Major Subwatersheds

Bar Foster ArcGIS 10.8.1, 2023-04-19 15:38 File: I:\Client\BassettCreek\Work\_Orders\2022\2025\_Management\_Plan\Map\Report\Figure 2-7 BCWMC Major Subwatershed.mxd User: DMJ



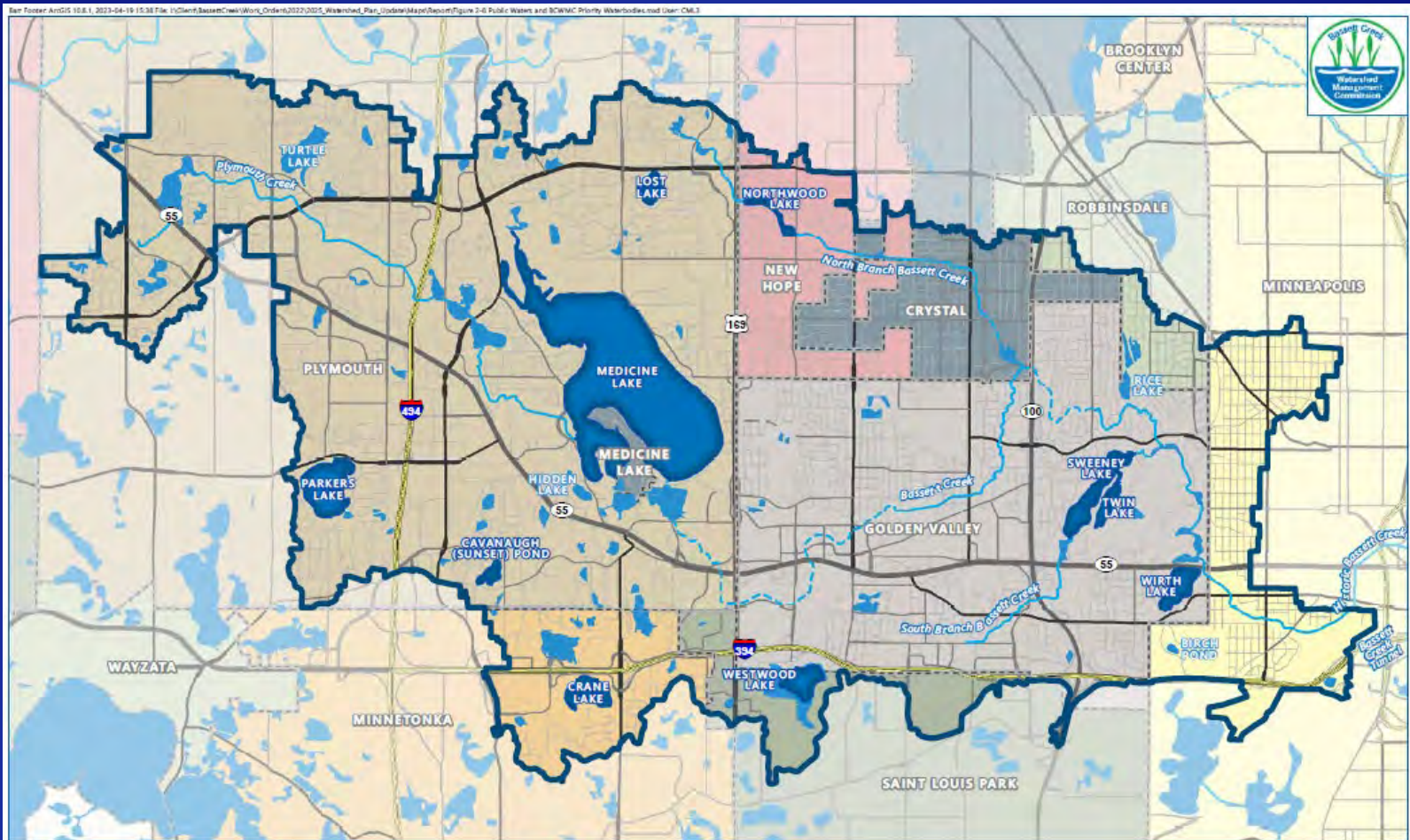
- BCWMC Jurisdictional Boundary
- Municipal Boundary
- BCWMC Priority Lake
- Public Waters Basin
- Creek
- Major Subwatershed
- General Flow Direction



**FIGURE 2-7**  
**BCWMC MAJOR SUBWATERSHEDS**  
Bassett Creek Watershed Management Commission  
2025 Management Plan



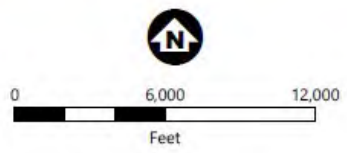
# Priority Waters (2015 Plan)



**FIGURE 2-8**

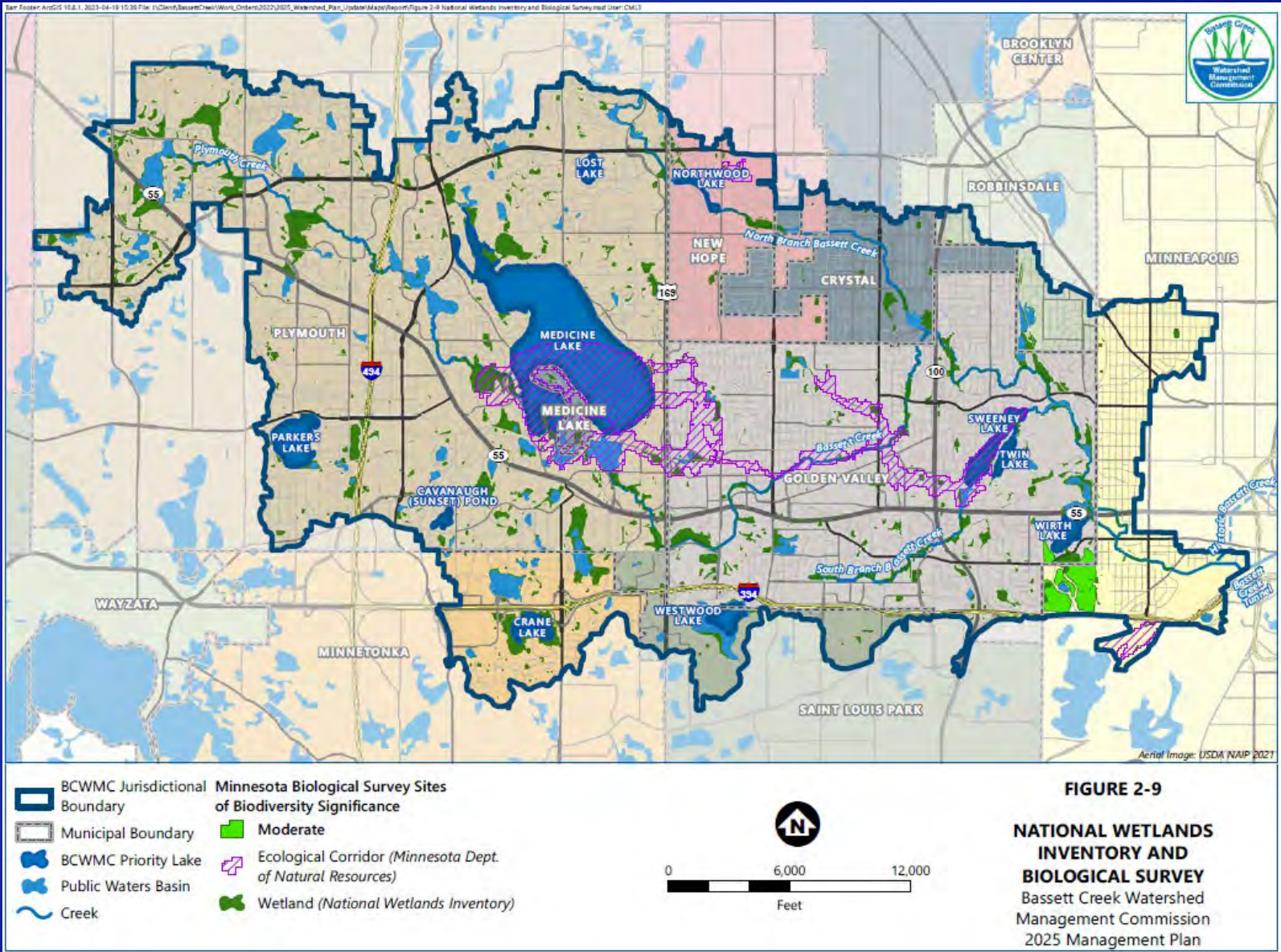
**PUBLIC WATERS AND BCWMC PRIORITY WATERBODIES**  
 Bassett Creek Watershed Management Commission  
 2025 Management Plan

- BCWMC Jurisdictional Boundary
- Municipal Boundary
- BCWMC Priority Lake
- Public Waters Basin
- Public Water Watercourse
- Public Ditch/Altered Natural Watercourse



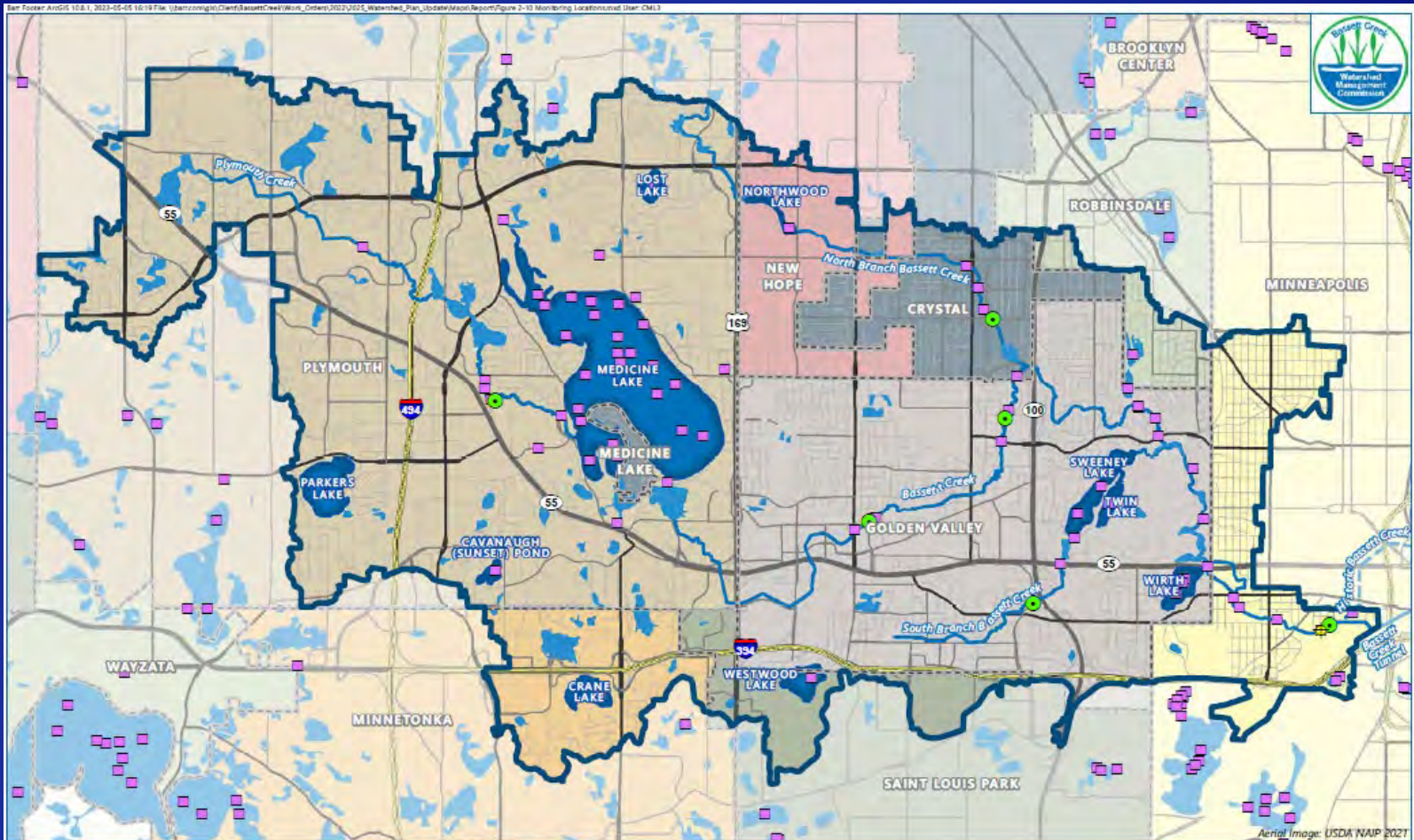


# Wetlands & Biological Survey



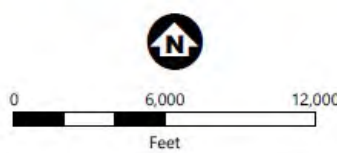


# Monitoring Locations



Aerial Image: USDA NAIP 2021

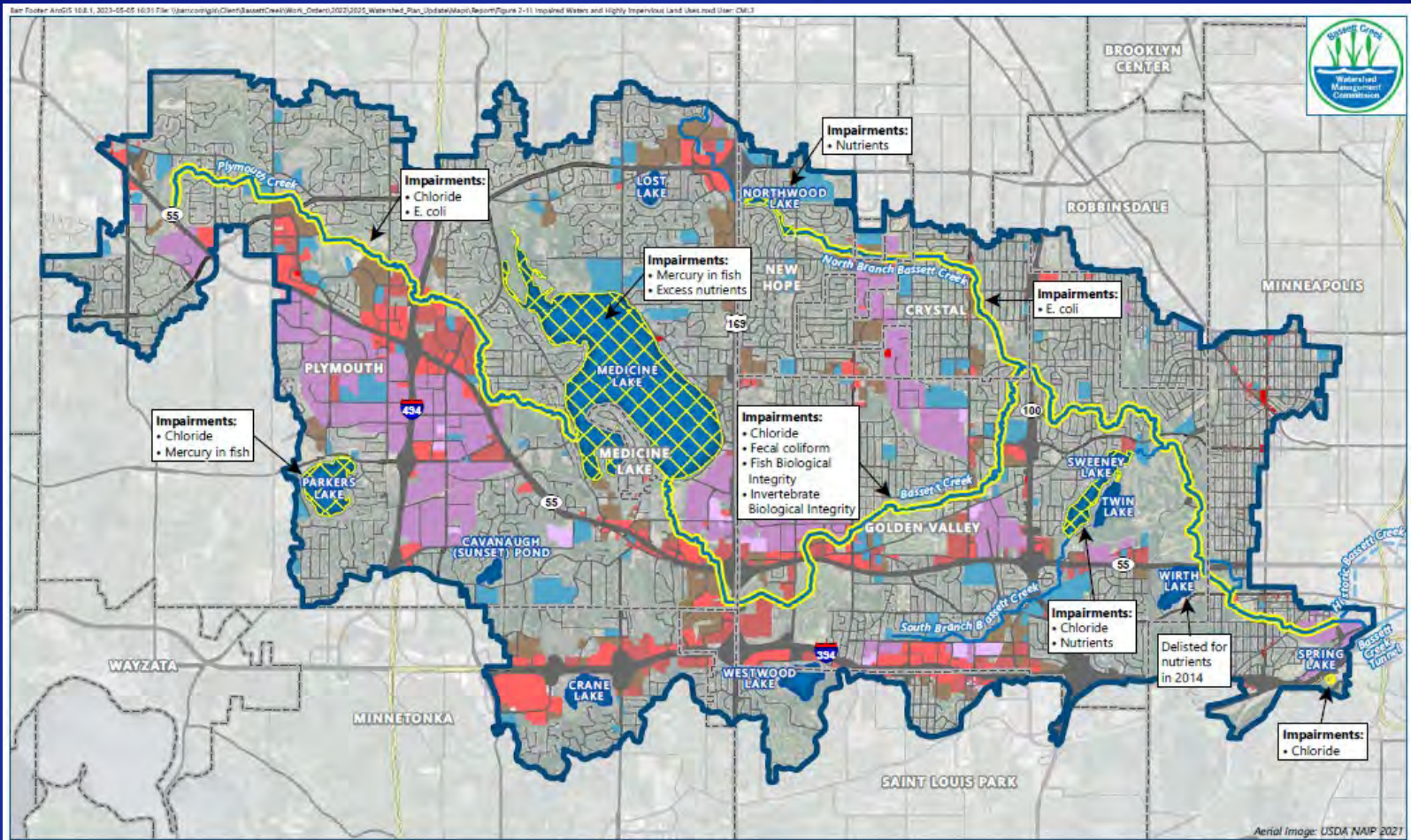
- BCWMC Jurisdictional Boundary
- Municipal Boundary
- BCWMC Priority Lake
- Public Waters Basin
- Creek
- Surface Water Quality Monitoring Site
- Biotic Monitoring Locations (BCWMC)
- Past and Current Water Quality Monitoring Location (MPCA)



**FIGURE 2-10**  
**MONITORING LOCATIONS**  
Bassett Creek Watershed  
Management Commission  
2025 Management Plan



# Impaired Waters & Imperviousness



**BCWMC Jurisdictional Boundary**  
**Municipal Boundary**  
**BCWMC Priority Lake**  
**Creek**  
**Impaired Lake (Draft 2022)**  
**Impaired Stream (Draft 2022)**

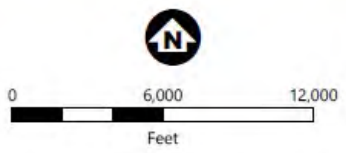
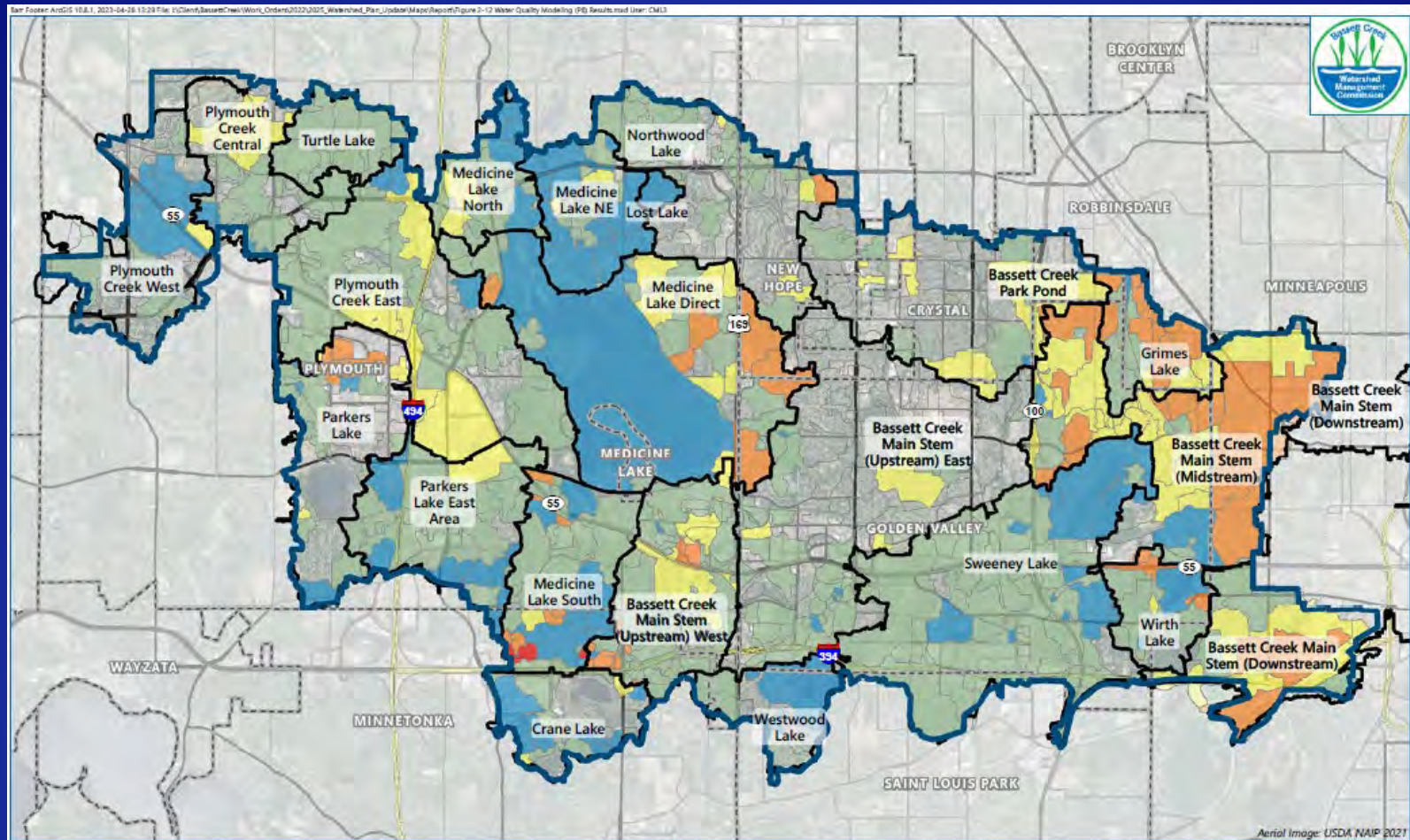
**High Impervious Land Use (Met Council, 2020, Hennepin City Parcels 2022)**  
 Multifamily  
 Mixed Use Commercial and Other  
 Mixed Use Industrial

Office  
 Retail and Other Commercial  
 Industrial or Utility  
 Institutional  
 Transportation Right-of-Way

**FIGURE 2-11**  
**IMPAIRED WATERS AND HIGHLY IMPERVIOUS LAND USES**  
 Bassett Creek Watershed Management Commission  
 2025 Management Plan



# P8 Water Quality Modeling



**FIGURE 2-12**  
**WATER QUALITY MODELING (P8) RESULTS**  
Bassett Creek Watershed Management Commission  
2025 Management Plan

Bar Footer: ArcGIS 10.8.1, 2023-04-26 13:29 File: C:\Users\Bassett\OneDrive\Work\Orders\2022\2025\_Watershed\_Plan\_Update\Map\Report\Figure 2-12 Water Quality Modeling (P8) Results.mxd User: CML3

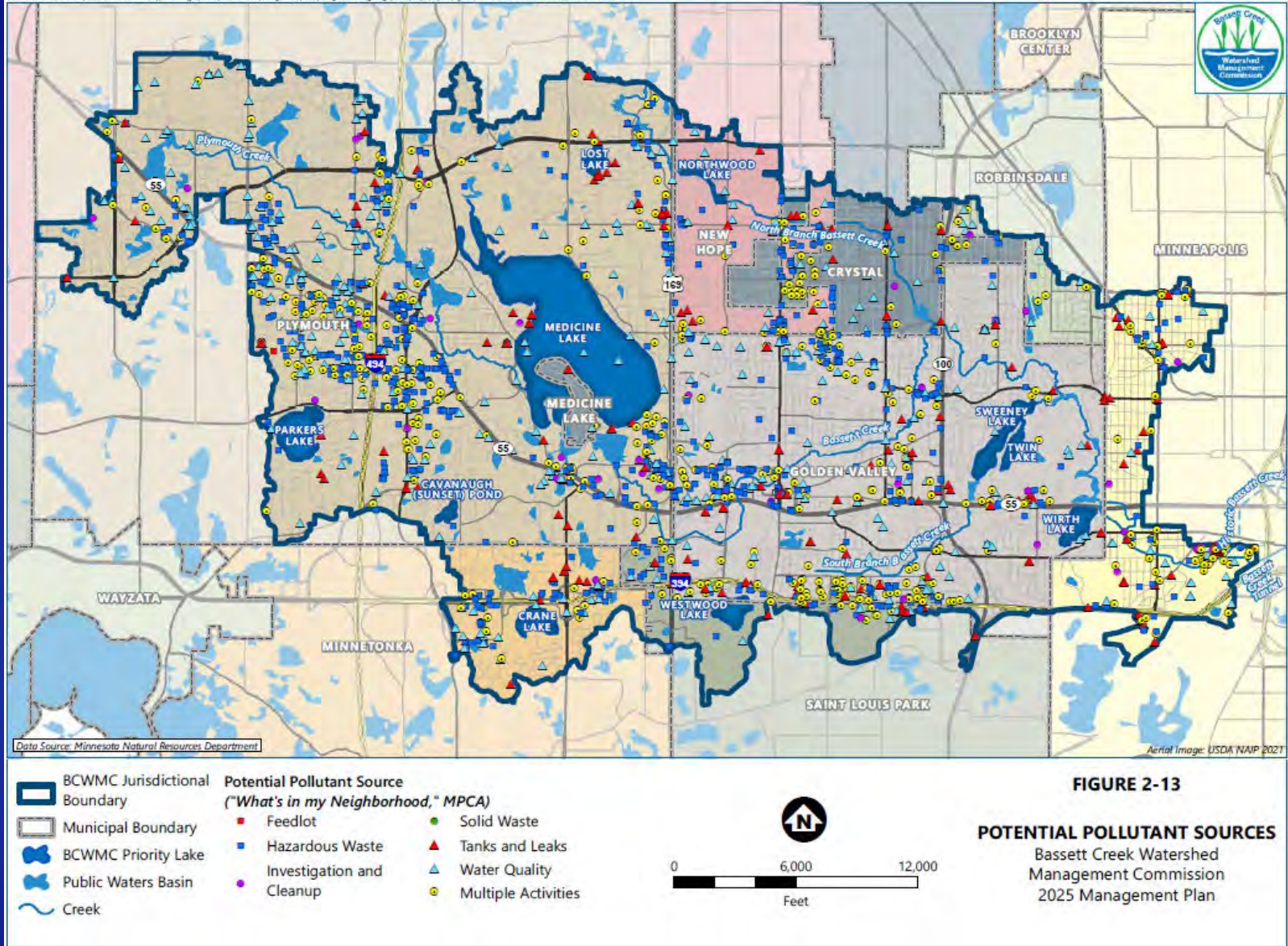


Aerial Image: USDA NAIP 2021



# Potential Pollutant Sources

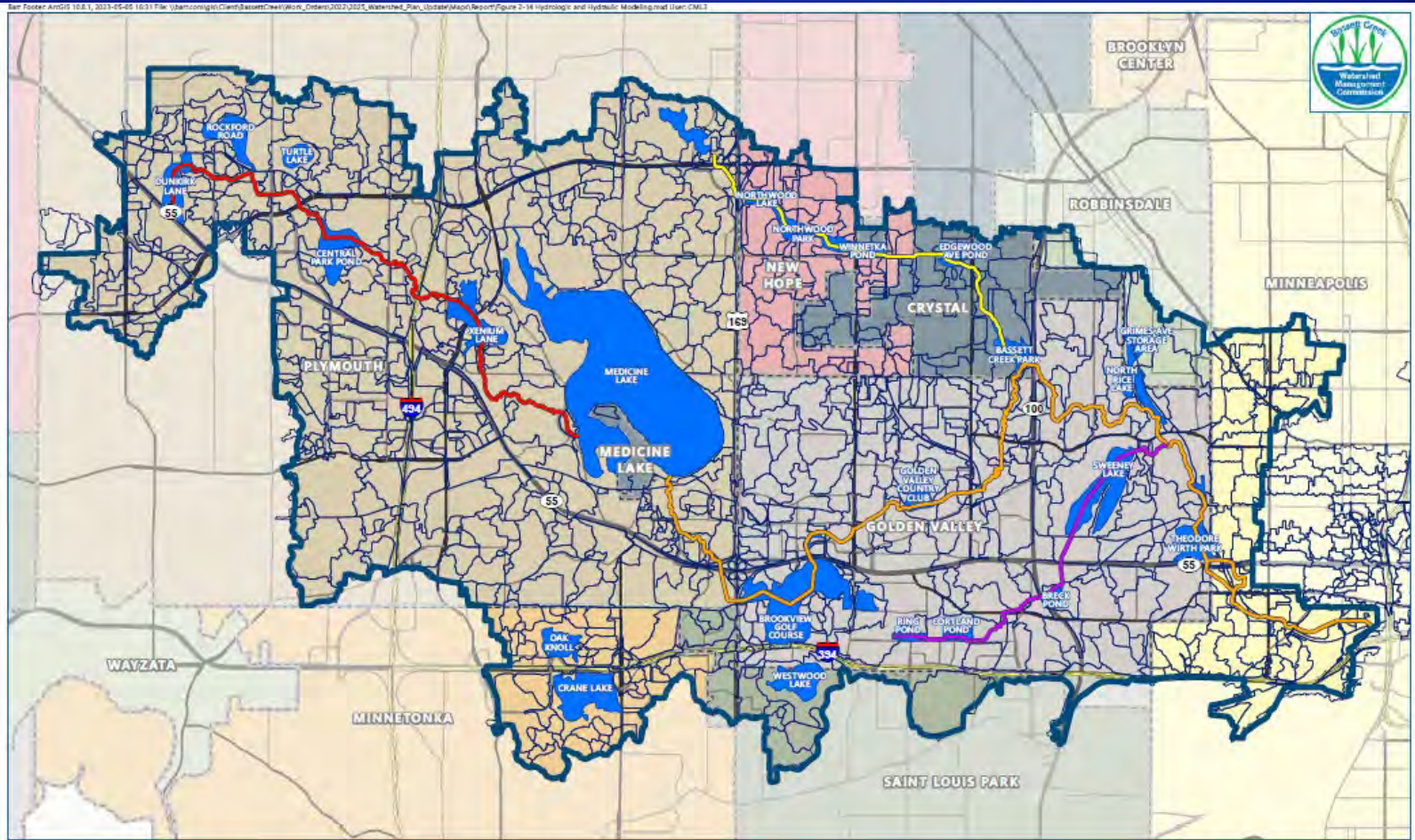
Bar Foster AndGIS 10.8.1, 2023-05-05 16:17 File: \\barfoster\gis\GIS\BassettCreek\Work\_Orders\2023\2025\_Management\_Plan\_Update\Map\BassettCreek\Figure 2-13 Potential Pollutant Sources.mxd User: CM13



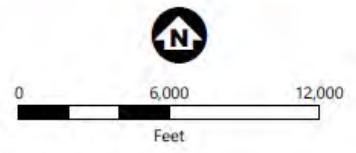


# Hydrologic/Hydraulic Modeling

Bar Footer: AmGIS 10.8.1, 2023-05-05 16:31 File: \\barfoot\gis\client\Bassett\NewWork\_Oct2023\2023\_Waterhed\_Plan\_Update\Map\Bassett\Figure 2-14 Hydrologic and Hydraulic Modeling.mxd User: CMJ



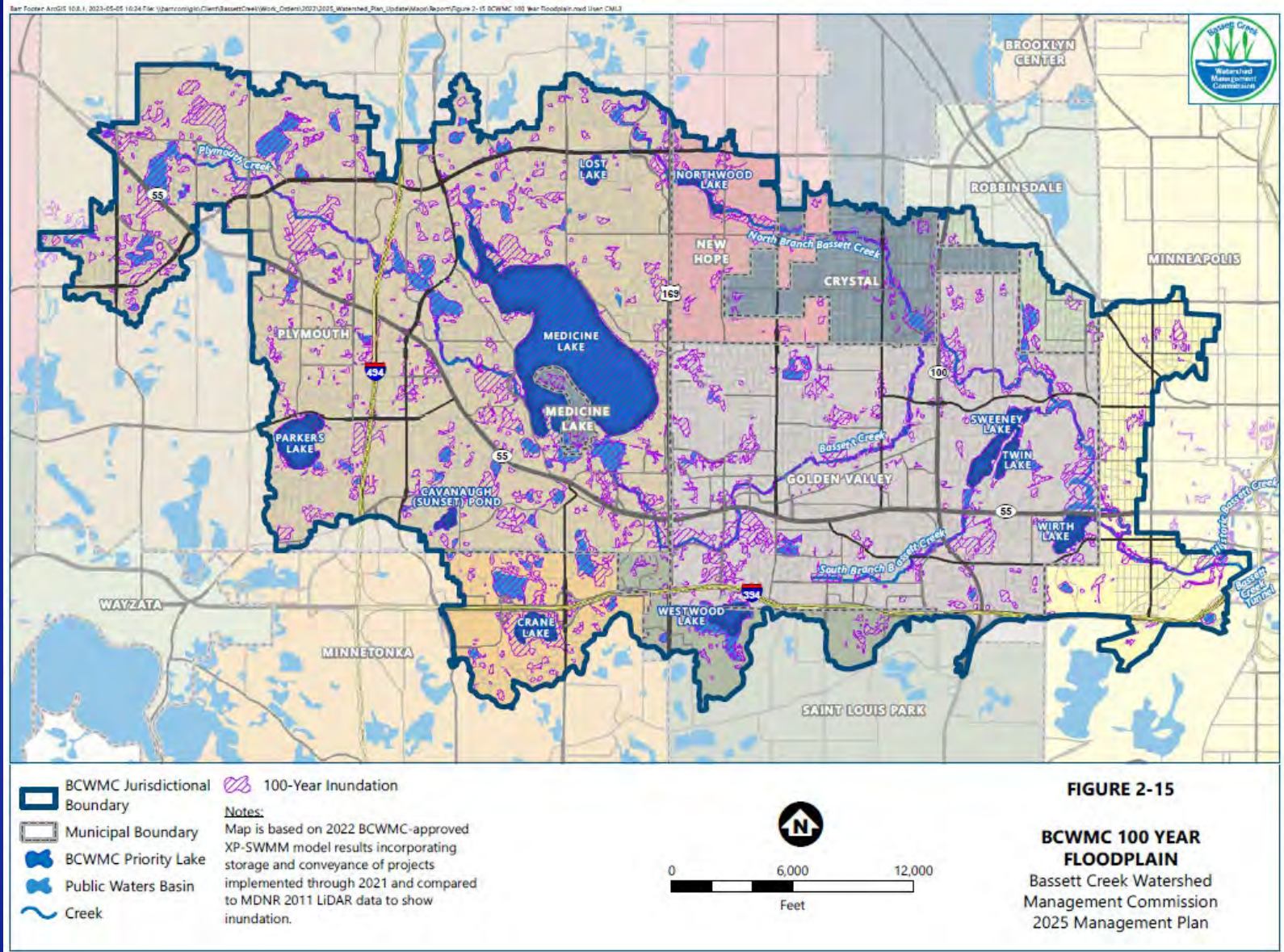
- BCWMC Jurisdictional Boundary
- Hydrologic Modeling Subwatershed
- Municipal Boundary
- BCWMC Trunk System Components
  - Main Stem Bassett Creek
  - North Branch Bassett
  - Plymouth Creek
  - Sweeney Branch Bassett Creek
- Trunk System Storage



**FIGURE 2-14**  
**HYDROLOGIC AND HYDRAULIC MODELING**  
 Bassett Creek Watershed Management Commission 2025 Management Plan



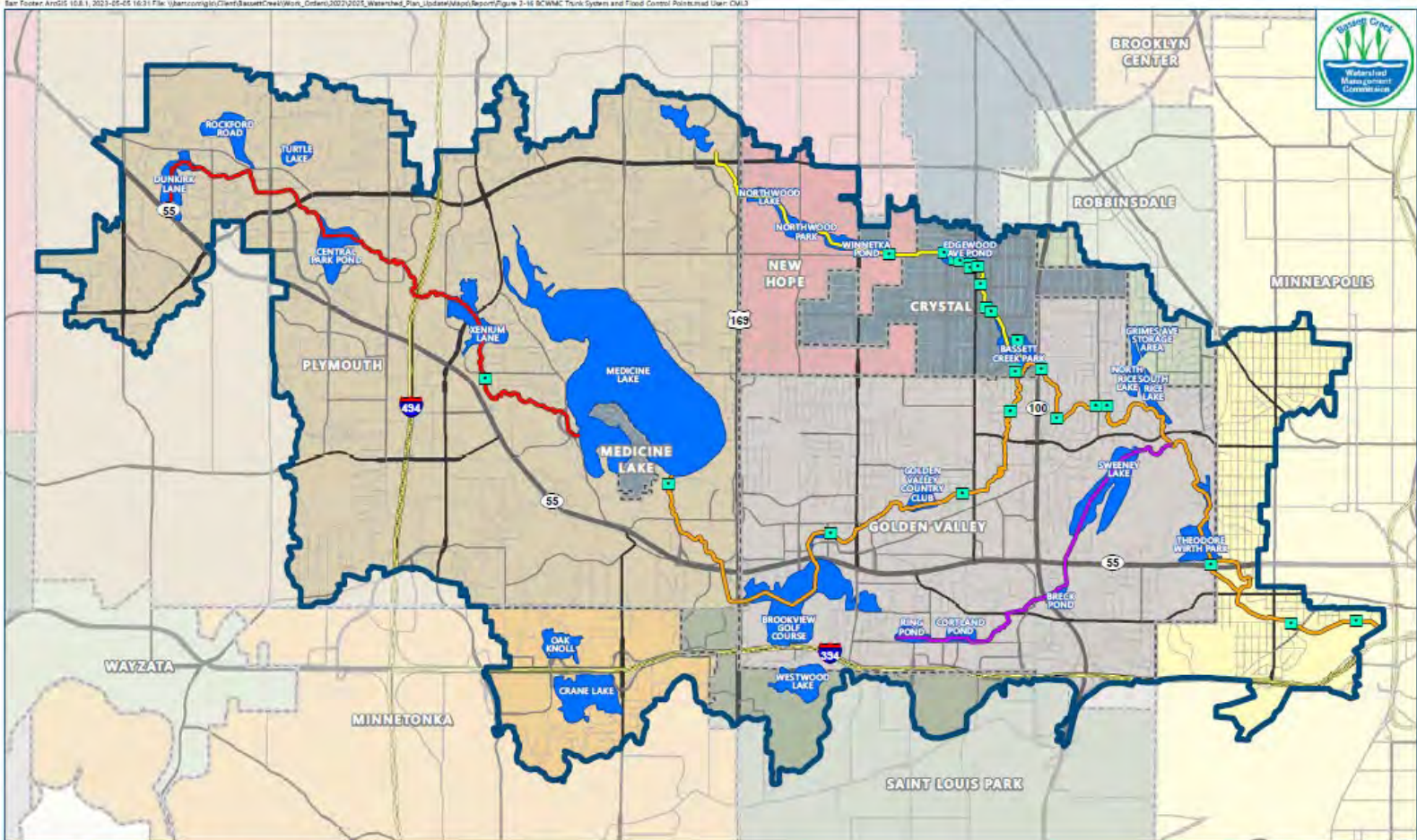
# Floodplain (100-year)





# Trunk System & Flood Control Project

Bar Foster ArcGIS 10.8.1, 2023-05-05 16:31 File: \\barfoster\gis\client\BassettCreek\Work\_Orders\2022\2023\_WaterMngt\_Plan\_Update\Map\Report\Figure 2-16 BCWMC Trunk System and Flood Control Point.mxd User: CMJ3



- BCWMC Jurisdictional Boundary
- Municipal Boundary
- Flood Control Project
- BCWMC Trunk System Components - Main Stem Bassett Creek
- BCWMC Trunk System Components - North Branch Bassett
- BCWMC Trunk System Components - Plymouth Creek
- BCWMC Trunk System Components - Sweeney Branch Bassett Creek
- Trunk System Storage

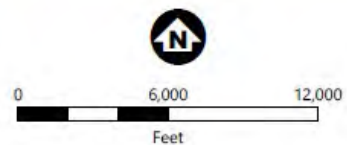


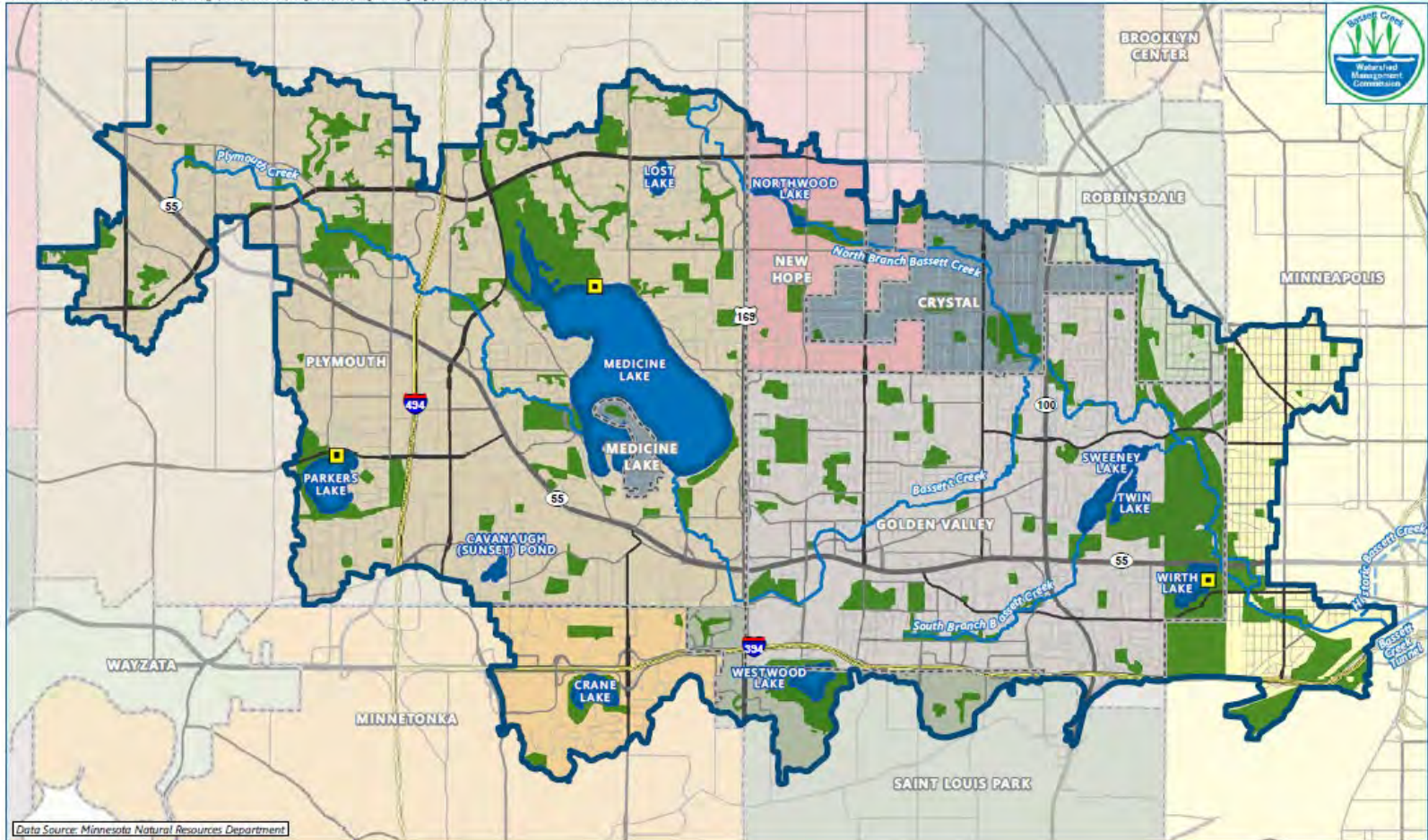
FIGURE 2-16

**BCWMC TRUNK SYSTEM AND FLOOD CONTROL PROJECTS**  
 Bassett Creek Watershed Management Commission  
 2025 Management Plan



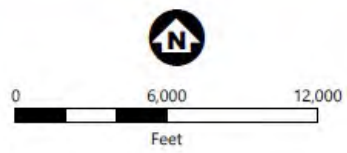
# Parks, Recreation & Public Access

Bar Foster ArcGIS 10.6.1 2023-04-27 12:28 File: \\barfoster\gis\client\Bassett\workspace\Orders\2023\2025\_Watershed\_Plan\_10dashMap\Report\Figure 2-17 Parks Recreation and Public Access.mxd User: CM3



Data Source: Minnesota Natural Resources Department

- BCWMC Jurisdictional Boundary
- Twin Cities Regional Park and Recreation Lands
- Municipal Boundary
- Public Water Access Site
- BCWMC Priority Lake
- Creek



**FIGURE 2-17**

**PARKS, RECREATION, AND PUBLIC ACCESS**  
 Bassett Creek Watershed Management Commission  
 2025 Management Plan



# 2021 Performance Assessment

## **Recommendation 1 – Prioritize developing an education and outreach strategy for BCWMC constituents**

Survey respondents that indicated there were potential roadblocks to implementing education and outreach activities – specifically staff capacity and funding.

## **Recommendation 2 – Conduct a review of the CIP**

Review the CIP program to identify specific barriers limiting implementation of some large projects, and develop a strategy for addressing those issues

## **Recommendation 3 – Develop clear, measurable goals and actions for future plan implementation**

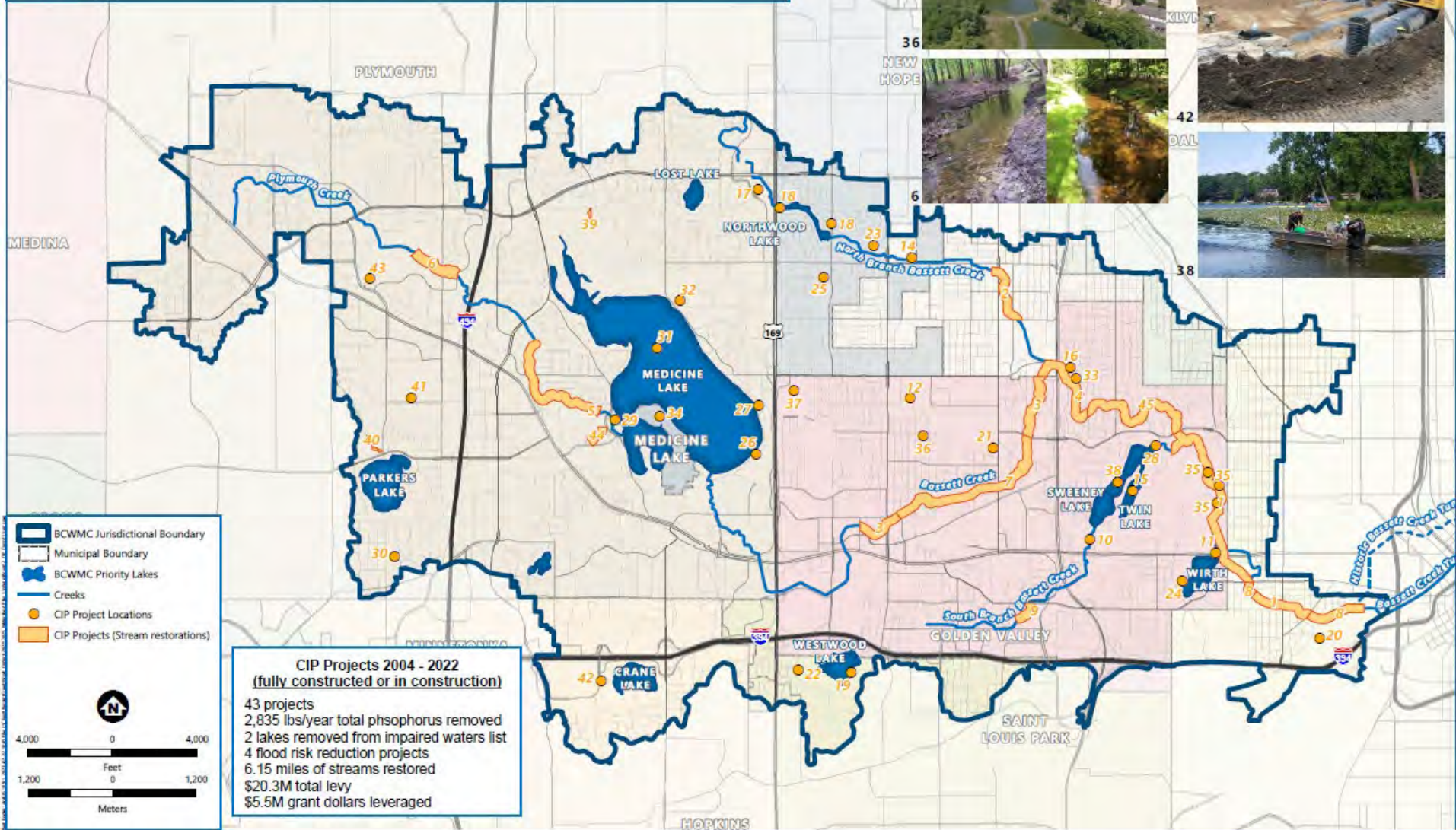
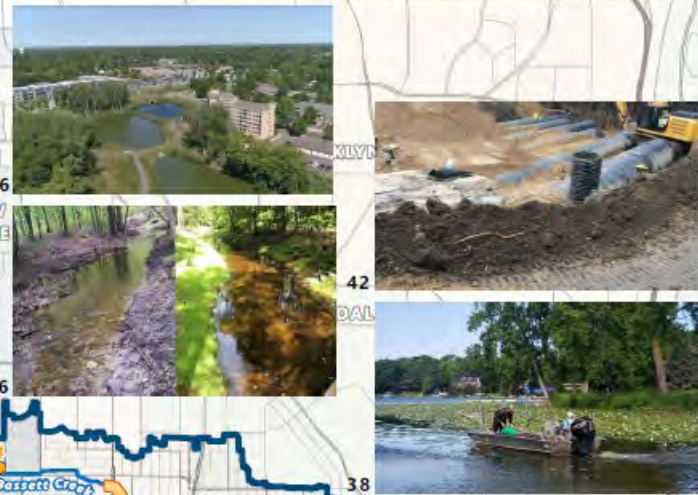
Highly recommended that the next watershed plan define a strategy to identify the top resource priorities, identify clear measurable goals and actions, and develop metrics to measure progress





# CAPITAL IMPROVEMENT PROJECTS

Bassett Creek Watershed Management Commission



- BCWMC Jurisdictional Boundary
- Municipal Boundary
- BCWMC Priority Lakes
- Creeks
- CIP Project Locations
- CIP Projects (Stream restorations)



**CIP Projects 2004 - 2022**  
**(fully constructed or in construction)**

43 projects  
 2,835 lbs/year total phosphorus removed  
 2 lakes removed from impaired waters list  
 4 flood risk reduction projects  
 6.15 miles of streams restored  
 \$20.3M total levy  
 \$5.5M grant dollars leveraged



# CAPITAL IMPROVEMENT PROJECTS

Bassett Creek Watershed Management Commission



- 45 projects completed or underway
- 13 stream restoration projects: 11 completed, 2 in progress
- 27 other water quality improvement projects: 19 completed, 1 on hold, 7 in progress
- 3 water quality & flood control projects: all are in progress
- 2 flood control projects: both completed

BCWMC Jurisdictional Boundary  
Municipal Boundary  
BCWMC Priority Lakes  
Creeks  
CIP Project Locations  
CIP Projects (Stream restorations)

4,000 0 4,000  
1,200 0 1,200  
Feet  
Meters

**CIP Projects 2004 - 2022**  
**(fully constructed or in construction)**

- 43 projects
- 2,835 lbs/year total phosphorus removed
- 2 lakes removed from impaired waters list
- 4 flood risk reduction projects
- 6.15 miles of streams restored
- \$20.3M total levy
- \$5.5M grant dollars leveraged





# Gaps Analysis

		Priority to address		
		Low	Medium	High
Complexity / difficulty to address	High	<ul style="list-style-type: none"> <li>Community BMP grants</li> </ul>		<ul style="list-style-type: none"> <li>DEI</li> <li>CIP process</li> <li>Chloride pollution</li> <li>H&amp;H modeling and mapping</li> <li>Linear project requirements</li> </ul>
	Medium	<ul style="list-style-type: none"> <li>WBIF policies</li> <li>Grant funding for flood risk reduction</li> <li>Sediment deltas</li> </ul>	<ul style="list-style-type: none"> <li>AIS management</li> <li>Buffer standard implementation</li> <li>Impaired waters and TMDLs</li> <li>Update priority waterbodies</li> <li>Assess organizational capacity*</li> <li>Stream health assessment</li> <li>Bassett Creek Valley Plan</li> </ul>	<ul style="list-style-type: none"> <li>Goal measurability*</li> <li>Progress assessment*</li> <li>Water quality modeling</li> <li>Climate change and precipitation trends</li> <li>Education program</li> </ul>
	Low	<ul style="list-style-type: none"> <li>Performance standards documentation</li> <li>Groundwater mgmt. roles</li> <li>Shoreline habitat monitoring</li> <li>NPDES construction stormwater permit</li> </ul>	<ul style="list-style-type: none"> <li>Infiltration guidance</li> </ul>	<ul style="list-style-type: none"> <li>Wetland priority areas*</li> </ul>

\* Plan content requirement per Minnesota Rules 8410